

# Transcriptional Profile of the Developing Subthalamic Nucleus

---

**Bokulić, Ema; Medenica, Tila; Sedmak, Goran**

Source / Izvornik: **eNeuro, 2022, 9**

**Journal article, Published version**

**Rad u časopisu, Objavljena verzija rada (izdavačev PDF)**

<https://doi.org/10.1523/ENEURO.0193-22.2022>

Permanent link / Trajna poveznica: <https://urn.nsk.hr/urn:nbn:hr:105:177571>

Rights / Prava: [Attribution 4.0 International](#)/[Imenovanje 4.0 međunarodna](#)

Download date / Datum preuzimanja: **2024-07-19**



Repository / Repozitorij:

[Dr Med - University of Zagreb School of Medicine  
Digital Repository](#)



Development

# Transcriptional Profile of the Developing Subthalamic Nucleus

 Ema Bokulić,<sup>1,2</sup> Tila Medenica,<sup>1,2</sup> and  Goran Sedmak<sup>1,2</sup>

<https://doi.org/10.1523/ENEURO.0193-22.2022>

<sup>1</sup>Croatian Institute for Brain Research, University of Zagreb School of Medicine, Zagreb, 10000, Croatia and <sup>2</sup>Center of Excellence for Basic, Clinical and Translational Neuroscience, University of Zagreb School of Medicine, Zagreb, 10000, Croatia

## Abstract

The subthalamic nucleus (STN) is a small, excitatory nucleus that regulates the output of basal ganglia motor circuits. The functions of the STN and its role in the pathophysiology of Parkinson's disease are now well established. However, some basic characteristics like the developmental origin and molecular phenotype of neuronal subpopulations are still being debated. The classical model of forebrain development attributed the origin of STN within the diencephalon. Recent studies of gene expression patterns exposed shortcomings of the classical model. To accommodate these findings, the prosomeric model was developed. In this concept, STN develops within the hypothalamic primordium, which is no longer a part of the diencephalic primordium. This concept is further supported by the expression patterns of many transcription factors. It is interesting to note that many transcription factors involved in the development of the STN are also involved in the pathogenesis of neurodevelopmental disorders. Thus, the study of neurodevelopmental disorders could provide us with valuable information on the roles of these transcription factors in the development and maintenance of STN phenotype. In this review, we summarize historical theories about the developmental origin of the STN and interpret the gene expression data within the prosomeric conceptual framework. Finally, we discuss the importance of neurodevelopmental disorders for the development of the STN and its potential role in the pathophysiology of neurodevelopmental disorders.

*Key words:* basal ganglia; hypothalamus; prosomeric model; subthalamic nucleus; transcription factors

## Significance Statement

The subthalamic nucleus is functionally a part of the basal ganglia circuitry, but the accumulated evidence from analyzing gene expression patterns and lineage-tracing experiments point to a hypothalamic developmental origin. The expression of morphogens and transcription factors in the STN corroborates the hypothalamic origin. Interestingly, some of the genes expressed in the STN are relevant for human brain development as they are involved in the pathophysiology of neurodevelopmental disorders (NDDs). This review could serve as a guidepost for future research on the neuronal phenotypes of human STN and their roles in NDDs.

## Introduction

The subthalamic nucleus (STN) is a small, lens-shaped structure with excitatory efferents to the globus pallidus pars interna (GPI) and globus pallidus pars externa (GPe) and substantia nigra pars reticulata (SNr; Emmi et al., 2020). In humans, the STN is located ventral to the zona incerta (ZI) and the H2 field of Forel, dorsolateral to the SN and dorsal to capsula interna. The anterior medial border

consists of lateral hypothalamic area, and the posterior medial border is the red nucleus (Hamani et al., 2004; Mai et al., 2004; Emmi et al., 2020). Currently, the STN has a prominent role in the treatment of movement disorders (Kumar et al., 1998; Hamani et al., 2005; Benabid et al., 2009). Therefore, the role of the STN in the basal ganglia circuitry and in the pathophysiology of Parkinson's disease (PD) is well researched (for review, see Parent and Hazrati,

Received May 12, 2022; accepted September 14, 2022.  
The authors declare no competing financial interests.

Author contributions: E.B., T.M., and G.S. designed research; E.B., T.M., and G.S. analyzed data; E.B., T.M., and G.S. wrote the paper.

1995; Joel and Weiner, 1997; Hamani et al., 2004; Temel et al., 2005; Bevan et al., 2006). Although the cellular composition of the STN and its neuronal morphology have been studied in different species [e.g., rat (Kita et al., 1983; Afsharpour, 1985); guinea pig (Robak et al., 2000); Göttingen minipig (Larsen et al., 2004); cat (Iwahori, 1978; Romansky and Usunoff, 1985, 1987); monkey (Rafols and Fox, 1976; Sato et al., 2000); and human (Yelnik and Percheron, 1979; Hardman et al., 2002; Lévesque and Parent, 2005)], the role of various genes in generation, specification, and maintenance of STN neuronal populations is still largely underexplored.

Transcription factors (TFs) regulate gene expression, control developmental patterning, neuronal specification, migration, and maturation. While the role of TFs has been extensively studied in the developing cerebral cortex (for review, see Molyneaux et al., 2007; Popovitchenko and Rasin, 2017; Molnár et al., 2019), it has been poorly studied in subcortical structures. Structures like the thalamus and hypothalamus have been particularly tough to study because of their heterogeneous neuronal populations and a lack of cell type-specific markers (Blackshaw et al., 2010). However, studies of gene expression have slowly begun to elucidate transcriptional codes that specify distinct cell types in these forebrain areas (Shimogori et al., 2010; Suzuki-Hirano et al., 2011; Moffitt et al., 2018; Guo and Li, 2019; Mickelsen et al., 2019, 2020; Romanov et al., 2020; Wen et al., 2020; Zhang et al., 2021). In line with these advancements, a combinatorial transcriptional code defining the STN is emerging.

The developmental origin of STN is still highly debated, and the lack of consensus on the definitions of hypothalamus and diencephalon has hindered the research on the differentiation and specification of STNs. Historically, STN has been described as a diencephalic structure and a part of the subthalamus, which was considered a separate part of the diencephalon (Kuhlenbeck, 1954; Reinoso-Suarez, 1966; Richter, 1966; Müller and O'Rahilly, 1988). New studies describing gene expression patterns in the developing forebrain have challenged the historical division of the forebrain, and with that, the place of the STN within it. Therefore, the summary of transcriptional code defining the STN could shed light on this debate. However, an extensive search of literature did not provide any study that systematically summarizes the data on TF expression in STN, with the exception of one review that was not focused solely on TFs (Philips et al., 2005). The aim of this review is to clarify the meaning of these new data for the position of the STN, to provide an overview of transcription factors involved in STN development, and to use them to discuss

the validity of some developmental theories. Finally, some of the discussed TFs are implicated in the pathogenesis of several neurodevelopmental disorders (NDDs), so we will try to link the functional roles of the STN with the symptomatology present in these disorders.

## Historical Perspectives—The Place of the Subthalamic Nucleus within Columnar and Prosomeric Models

Historically, the STN has been described as a diencephalic structure. In pioneering studies by Herrick (1910) of the amphibian brain, he proposed the columnar model of diencephalic development (based on anatomic landmarks), dividing the diencephalic primordium into the four horizontal/longitudinal subdivisions: epithalamus, dorsal thalamus, ventral thalamus, and hypothalamus. This model was an updated version of the original model of diencephalic development by His (1893a), who divided the diencephalon into epithalamus, thalamus, and hypothalamus. For years, the columnar model has been widely used as a basis to describe the development of the diencephalon with some modifications. Many authors interpreting the development of STN within the columnar model have placed the STN in the additional fifth diencephalic column, the subthalamus (Kuhlenbeck, 1954; Reinoso-Suarez, 1966; Richter, 1966; Müller and O'Rahilly, 1988). Besides the STN, the subthalamic column gave rise to the thalamic reticular nucleus, GP, and ZI (Reinoso-Suarez, 1966; Richter, 1966; Müller and O'Rahilly, 1988). However, the columnar model was challenged by neuroembryological studies of Bergquist and Källén (1954, 1955), who found that the embryonic brain of all major vertebrates has transverse and longitudinal zones of intense proliferation that make up a grid-like pattern (Nieuwenhuys, 2017). Interestingly, these transverse zones of high mitotic activity have already been described in the late 19th/early 20th century by Von Baer (1828), Orr (1887), and Von Kupffer (1906), who acknowledged the segmental nature of the embryonic brain. Orr (1887) called these zones neuromeres or neural segments. Although the neuromeric models were developed before the columnar model was proposed, authors like Herrick (1910) and Kuhlenbeck (1954) disregarded neuromeres as transient structures that disappear during the course of embryonic development (Puelles, 2021). Another discrepancy between the early neuroembryological observations and the columnar model concerns the question of the forebrain axis. Columnar authors neglected the cephalic flexure and simply assumed that the straight forebrain axis ends in the telencephalon (Herrick, 1910; Kuhlenbeck, 1954; Puelles et al., 2012). Finally, the columnar model prevailed as the neuromeric models had several problems that could not be resolved without modern techniques of experimental embryology. For example, the neuromeric pattern in the embryonic rhombencephalon is easily distinguishable, whereas segmental organization of the prosencephalon is not so conspicuous. The proliferative zones (proneuromeres, neuromeres, and transverse bulges) of Bergquist and Källén (1954, 1955) were thought to appear and disappear sequentially, making it difficult to establish boundaries between them (Nieuwenhuys, 2017; Puelles, 2021). Another

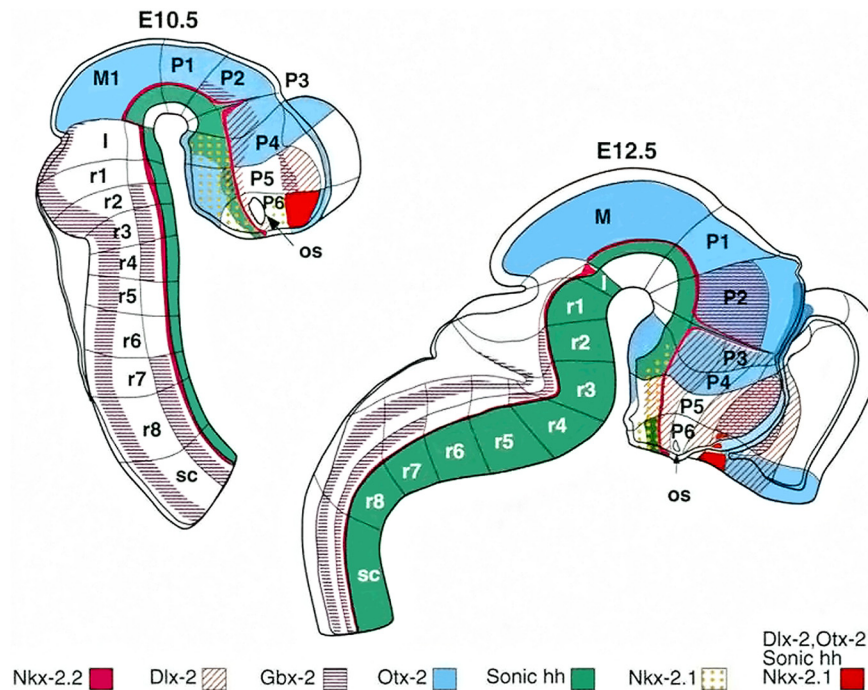
This research was supported by Croatian Science Foundation Grant UIP-2017-05-7578 (to G.S.); and the European Union through the European Regional Development Fund, Operational Program Competitiveness and Cohesion Grant KK.01.1.1.01.007, CoRE-Neuron.

Correspondence should be addressed to Goran Sedmak at [gshedmak@hiim.hr](mailto:gshedmak@hiim.hr).

<https://doi.org/10.1523/ENEURO.0193-22.2022>

Copyright © 2022 Bokulić et al.

This is an open-access article distributed under the terms of the Creative Commons Attribution 4.0 International license, which permits unrestricted use, distribution and reproduction in any medium provided that the original work is properly attributed.



**Figure 1.** The prosomeric model of forebrain subdivision is based on gene expression patterns. The embryonic mouse brain can be divided in rhombencephalon–hindbrain (rhombomeres r1–r8), isthmus, mesencephalon, diencephalon (prosomeres p1–p3, from caudal to rostral), and the secondary prosencephalon (prosomeres p4–p6). The analyzed genes (*Dlx2*, *Gbx2*, *Nkx2-1*, *Nkx2-2*, *Otx-2*, and *Shh*) are expressed in restricted parts of the neuroepithelium. The hypothalamus is a part of two prosomeres, p4 and p5. According to the updated prosomeric model (Puelles and Rubenstein, 2015), these prosomeres are now two hypothalamo-telencephalic prosomeres (hp1 and hp2). The hp1 prosomere (former p4 prosomere) is called the peduncular hypothalamus (PHy), and the hp2 prosomere (former p5 prosomere) is the terminal hypothalamus (THy), which occupies the rostralmost part of the forebrain. H, rhombencephalon–hindbrain; I, isthmus; M, mesencephalon–midbrain; os, optic stalk; p, prosomere; r, rhombomere; sc, spinal cord; SP. Figure from the article by Rubenstein et al. (1994). Reprinted with permission from the American Association for the Advancement of Science.

problem was the number of forebrain neuromeres and the position of sulcus limitans, which directly influences our understanding of the position of motor and sensory nuclei in the prosencephalon (Keyser, 1973; Gribnau and Geijsberts, 1985).

These problems were resolved with the advent of molecular neurobiology and the discovery of genes involved in brain development and patterning. The experimental data and expression patterns of possible regulatory genes proved difficult to interpret within the columnar model as the expression patterns did not follow previously postulated borders of forebrain subdivisions. Thus, in an attempt to unite morphologic and gene expression data, Puelles and Rubenstein developed the prosomeric model (Rubenstein et al. 1994; Puelles and Rubenstein 2003; Puelles et al. 2013). The prosomeric model follows postulates of the previous neuromeric model of Bergquist and Källén (1954, 1955) and proposes that the forebrain can be divided in transverse domains called prosomeres (shortened from “prosencephalic neuromeres”). Each of them may be further subdivided in longitudinal domains (i.e., the roof, alar, basal, and floor plate), creating a grid-like structure in which one “square” represents one basic morphogenetic unit (Rubenstein et al., 1994; Puelles and Rubenstein, 2003; Puelles et al., 2013; Fig. 1). This model is based on embryological evidence about the

phylogenetically conserved segmental organization of the CNS in all vertebrates. Additionally, fate-mapping and transgenic animals resolved issues raised by older neuromeric models, thus experimentally proving concepts of prosomeric model. For instance, boundaries between proneuromeres of Bergquist and Källén (1954, 1955) are retained in the adult brain as molecular boundaries between prosomeres (Puelles, 2021), and the sulcus limitans of His (1893a,b) is basically the molecularly defined alar–basal boundary in the prosomeric model (Puelles et al., 2012). However, there are opposing views regarding the number of prosomeres. Figdor and Stern (1993) analyzed the segmental organization of chick embryo and came to the conclusion that the hypothalamus and the ventral thalamus (now called the “prethalamus”; “prosomere p3” in the prosomeric model) make up one segment (neuromere D1), suggesting they have a common developmental origin. Furthermore, several recent articles reported gene expression patterns in the developing diencephalon and hypothalamus, which were difficult to interpret within the prosomeric model. These studies suggest that there is a set of genes with expression domains crossing proposed prosomeric boundaries, especially the hypothalamo-prethalamic boundary (Shimogori et al., 2010; Bedont et al., 2015; Newman et al., 2018). These inconsistencies should be resolved in

the future as our knowledge about early hypothalamic patterning increases.

One of the biggest changes in the prosomeric model is the interpretation of the diencephalic and hypothalamic development. The hypothalamus had classically been perceived as a ventral longitudinal part of the diencephalon, as the authors assumed that the longitudinal axis of the forebrain continues in the telencephalon (Herrick, 1910; Kuhlenbeck, 1954; Reinoso-Suarez, 1966; Richter, 1966; Swanson, 2012). In the prosomeric model, the hypothalamus is separated from the diencephalon and comprises the most rostral part of the neural tube, lying rostrally to the diencephalon and ventrally to the telencephalon (Fig. 1).

## The Origin of STN Neurons and the Concept of Subthalamus

The new model of hypothalamic development has direct implications for our understanding of the origin of STN neurons, so we will re-examine existing studies in the context of the prosomeric model.

Part of the problem with studying the developmental origin of STN lies in the terminological confusion as terms “hypothalamus” and “subthalamus” have historically been used interchangeably or their anatomic borders were not clearly defined (Puelles et al., 2012). When comparing classical studies with the prosomeric model, the term “subthalamus” refers to the peduncular hypothalamus [hypothalamic prosomere 1 (hp1)], and the term “hypothalamus” refers just to the terminal hypothalamus (hp2; Fig. 2A; Reinoso-Suarez, 1966; Richter, 1966). Upon closer inspection of the literature, another problem we encountered is the lack of clear distinction between the subthalamus and the “subthalamic nucleus.” Furthermore, classic neuroanatomists had their own interpretations of what the subthalamus encompasses. The ZI and the GP have both been included in the subthalamus, whereas modern fate-mapping and molecular studies ascribed different developmental origins for these nuclei, the prethalamus for the former, and the medial ganglionic eminence (MGE) for the latter (Reinoso-Suarez, 1966; Richter, 1966; Nóbrega-Pereira et al., 2010; Puelles et al., 2012). To avoid this confusion, Puelles et al. (2012), Puelles and Rubenstein (2015), and Puelles (2019) advocate that the term “subthalamus” should be abandoned as it has no developmental basis.

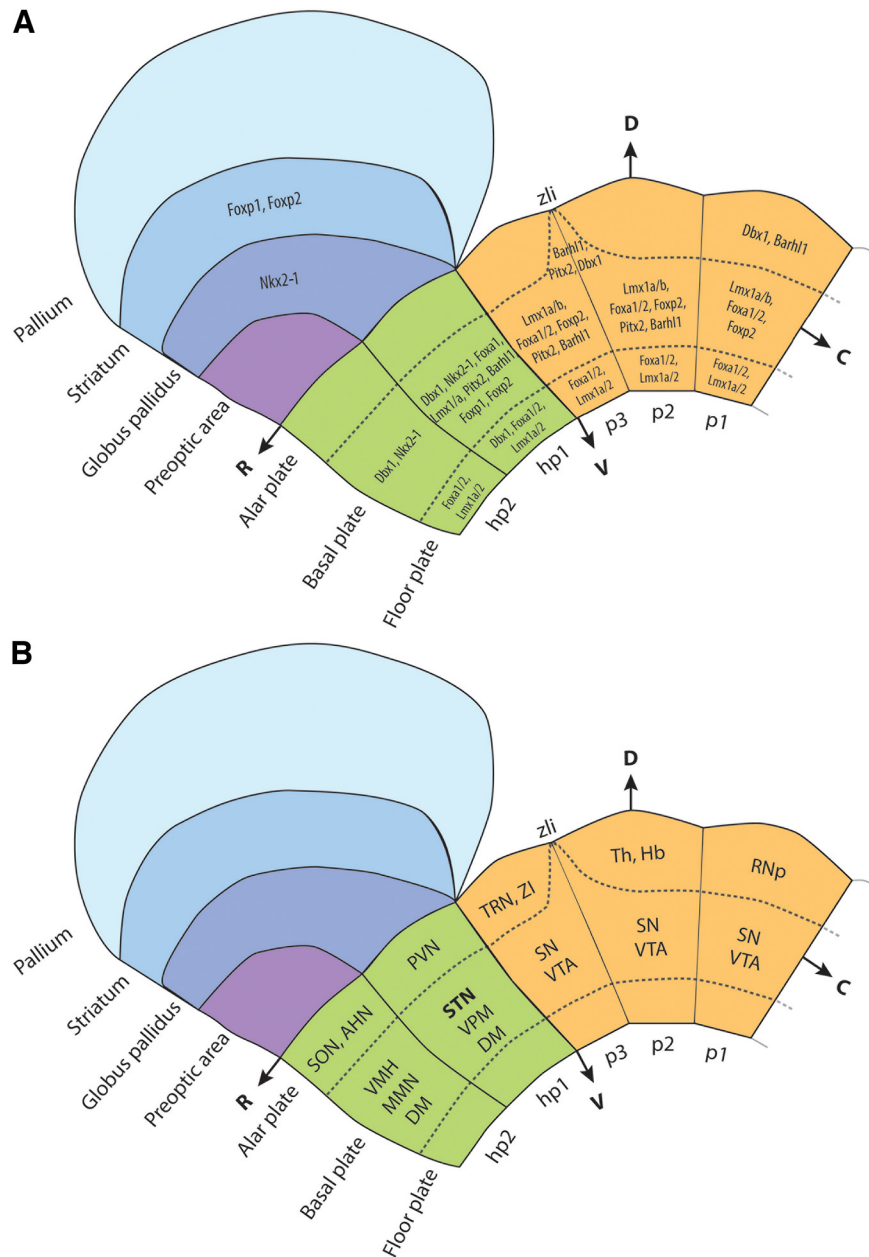
The STN was first described to arise from the mammillary region of the hypothalamus (Gilbert, 1935). In the human brain, the first appearance of the “subthalamic area” within the hypothalamus is described at 33–35 d of gestation, but the “subthalamic nucleus” is not unambiguously defined (Müller and O’Rahilly, 1988). At 44–51 d of gestation, the STN can be seen near the mesencephalon and the mammillary body, with cellular strands connecting the nucleus with the supramammillary recess, its presumed place of origin (Müller and O’Rahilly, 1990).

The question of the origin of STN neurons was explored in the Chinese hamster using [<sup>3</sup>H]-thymidine autoradiography.

The study by Keyser (1973) described for the first time the tangential rostradorsal migration of STN neurons from the supramammillary recess toward the tel-diencephalic border. The Keyser’s term “regio subthalamica” can be discerned from embryonic day 12 (E12) and refers to the area behind the mammillary recess, whereas the STN is recognizable from E15, with the majority of neurons born from E13 to E18. Similar experiments in rats demonstrated that STN originates from the germinative zone near the mammillary recess from which neurons migrate radially, then tangentially and dorsally along the marginal layer of the ventral thalamus (Marchand, 1987). When analyzing the results of these studies, it becomes apparent that the change in forebrain axis proposed by the prosomeric model added to terminological confusion. The “(supra) mammillary recess” that Müller and O’Rahilly (1990), Keyser (1973), and Marchand (1987) describe is actually the retromammillary area in the prosomeric model. The retromammillary area is a part of a broad mammillary region that can be divided in two rostrocaudal parts, with the mammillary area being the rostral part from which the mammillary nuclei arise, and the retromammillary area being the caudal part. In the ventrodorsal (V-D) direction, the retromammillary area comprises the floor and basal plate of the hypothalamic prosomere 1 (hp1; Fig. 2A).

The STN neurons in rats are generated between E12 and E15 with most neurons migrating between E14 and E15 in an “outside-in” fashion, meaning that the early-born neurons settle in the laterodorsal part of the STN, and the late-born neurons settle in the ventromedial part (Altman and Bayer, 1979a,b). Interestingly, these authors placed the STN in the ventral thalamus (which corresponds to the prosomere p3, now called the prethalamus) instead of the hypothalamus, claiming the nucleus originates from the ventrocaudal diencephalic neuroepithelium and later migrates laterodorsally over the fibers of the cerebral peduncle (Altman and Bayer, 1979b).

Based on everything discussed in previous paragraphs, the main question is whether the STN has hypothalamic or diencephalic origin. The confusion about the place of origin of the STN arose from the differences in the interpretation of the hypothalamus as a developmental unit. The columnar model proposes that the hypothalamus is a ventral-most diencephalic domain; whereas the prosomeric model states that the hypothalamus is a separate developmental unit (Puelles and Rubenstein, 2015). The STN was traditionally attributed to the diencephalon because of its anatomic position in the adult brain and functional connectivity with the basal ganglia circuitry. However, the dorsalward tangential migration of STN from the retromammillary area of the hypothalamus was noted in early descriptive works and was corroborated using modern tracing experiments (Gilbert, 1935; Keyser, 1973; Marchand, 1987; Müller and O’Rahilly, 1990; Martin et al., 2004; Skidmore et al., 2008). Contrary to that, authors like Altman and Bayer (1979b) placed the origin of STN in the ventral thalamus (prethalamus), but the hypothalamic and prethalamic lineages can now easily be distinguished by analyzing gene



**Figure 2.** A schematic representation of forebrain subdivisions, expression patterns of TFs, and major hypothalamic and diencephalic nuclei originating from each prosomere. **A**, Forebrain subdivisions and expression patterns of TFs according to the prosomeric model. The developing STN can be found in the basal plate of the hp1 prosomere. Notice how the STN shares a set of TFs with other hypothalamic and diencephalic nuclei, as well as parts of the subpallium (i.e., basal ganglia). The telencephalon and the hypothalamus comprise the secondary prosencephalon. The diencephalic and the hypothalamic prosomeres have alar, basal, and floor plates. Also, in the prosomeric model, the hypothalamus is the rostralmost prosencephalic domain, and the STN is placed in the retromammillary area of the hp1 prosomere, the ventralmost part of the hypothalamus. ZLI is a transverse border between p2 and p3 prosomere. **B**, major hypothalamic and diencephalic nuclei originating from each prosomere. Parts of the substantia nigra and ventral tegmental area have diencephalic origin (Puelles, 2019), so they are parts of diencephalic prosomeres p1–p3. The dorsomedial nucleus originates from both peduncular and terminal hypothalamic domains. AHN, Anterior hypothalamic nucleus; DM, dorsomedial nucleus; Hb, habenula; MMN, mammillary nuclei; POA, preoptic area; PVN, paraventricular nucleus; RNp, parvocellular part of nucleus ruber; SN, substantia nigra; SON, supraoptic nucleus; Th, thalamus; TRN, thalamic reticular nucleus; VMH, ventromedial nucleus; VPM, ventral premammillary nucleus; C, Caudal; D, dorsal; R, rostral; V, ventral.

expression patterns. As we will discuss in the following paragraphs, the STN clearly expresses several basal/hypothalamic markers, which provides strong evidence against a diencephalic–prethalamic origin of the STN

and supports retromammillary/hypothalamic origin (Vue et al., 2007; Kee et al., 2017; Guo and Li, 2019; Kim et al., 2020; Mickelsen et al., 2020; Wallén-Mackenzie et al., 2020).

## Induction and Early Patterning of Hypothalamic Primordium

The induction of the neural plate and the patterning of the forebrain are complex processes, so the in-depth discussion of these topics is beyond the scope of this review. In the following paragraphs, we will summarize key findings regarding the early forebrain development. The hypothalamus, along with the rest of the forebrain, arises from a part of the ectoderm that thickens under the influence of the underlying mesoderm and forms the neural plate (Bronner-Fraser and Fraser, 1997). Ectodermal cells destined to become the forebrain have to go through neural induction, specification of an anterior character, and initial regionalization in antero-posterior (A-P) axis (for review, see Stern, 2001, 2006; Wilson and Houart, 2004). However, the exact sequence of events during the early forebrain development (from gastrulation to late neural plate) is still a controversial subject (Stern, 2002). As Stern (2001) argues, perhaps more complex mechanisms (e.g., pre-patterning of the neural plate or timing of exposure to inductive signals) govern these processes that remain to be experimentally proven.

The first specification of mammalian neural tissue occurs during gastrulation and is initiated through interactions between a primary organizer (for the definition of an organizer, see Anderson and Stern, 2016) called the node and the surrounding ectoderm (Rubenstein et al., 1998; Wilson and Houart, 2004). Accumulated evidence point to neural induction beginning before the formation of the node, so the neural fate is promoted by fibroblast growth factor (FGF) signaling and later sustained by bone morphogenetic protein (BMP) antagonism (Wilson and Houart, 2004; Vieira et al., 2010). It is crucial for proper forebrain development that the anterior neural tissue retains its identity and repels caudalizing influences. In chick and mouse embryo, the node and its derivative, the prechordal mesendoderm, protect the anterior neural plate against caudalizing influences of signaling molecules like Wingless type proteins (WNTs), FGFs, BMPs, and retinoic acid (Stern, 2001; Wilson and Houart, 2004; Cajal et al., 2014). At this early stage of forebrain development, these secreted factors create a basic A-P pattern, which will later be refined by local signals from the neural tissue. This A-P pattern creates transverse segments with differential competence to respond to the same inductive signal (Shimamura and Rubenstein, 1997; Rubenstein et al., 1998). Moreover, the neural plate (and neural tube) is patterned in mediolateral (M-L; or V-D in the neural tube) direction under the influence of non-neural tissue (Ruiz i Altaba, 1994; Rubenstein et al., 1998; Vieira et al., 2010). The grid-like image of neural plate that develops after A-P and M-L (V-D) patterning served as a basis for the prosomeric model of brain development (discussed in previous paragraphs). In the prospective forebrain, the axial mesendoderm (the prechordal plate) specifies medial/ventral cell fate, whereas lateral/dorsal cell fate is imparted by the influence of non-neural ectoderm (Shimamura and Rubenstein, 1997; Rubenstein et al., 1998). The non-neural ectoderm specifies neural

crest cells through planar interactions with the neighboring neural plate (Barenbaum and Bronner-Fraser, 2005; Basch and Bronner-Fraser, 2006). Furthermore, non-neural ectodermal cells precede the development of the anterior neural ridge, a local organizer (“secondary” organizer) that has a role in the regionalization of the telencephalon (Shimamura and Rubenstein, 1997; Cajal et al., 2014).

Secondary organizers form as specialized parts of the neuroepithelium that act as molecular boundaries, thus preventing intermixing of cells of different lineages (Vieira et al., 2010; Kiecker and Lumsden, 2012). By secreting morphogenes, secondary organizers further influence brain patterning, resulting in the development of brain vesicles (Rubenstein et al., 1998; Vieira et al., 2010). Morphogens are locally secreted molecules with the ability of organizing surrounding cells into patterns (Gurdon and Bourillot, 2001; Rogers and Schier, 2011). This is accomplished through their concentration gradient, so cells change their fate in response to the sensed level of morphogen (e.g., cells exposed to high morphogen concentrations activate different transcriptional programs than those exposed to low concentrations; Schmidt et al., 2008; Rogers and Schier, 2011). Concentration gradient formation can be explained by a synthesis, diffusion, and degradation model (Rogers and Schier, 2011). The idea of the concentration gradient for a morphogen is usually associated with positional information (Wolpert, 1989; Cooke, 1995; Lawrence and Struhl, 1996; Gurdon and Bourillot, 2001). However, the concentration gradient might not be solely responsible for the effects of morphogen activity: the time of exposure to a morphogen and cellular context, the so-called “sequential cell context model,” might also play a role (Pagès and Kerridge, 2000). Another interesting theory is that morphogens act on groups of cells that have gained collective properties through homotypic interactions and have acquired a level of competence to respond to secreted signals (Chandebois and Faber, 1983; Gass and Hall, 2007). According to this theory, a group of cells is able to differentiate through periodic autonomous developmental progressions that are intermittently influenced by signals from other parts of the tissue, as long as the cells are not dissociated. Also, this “collective behavior” could function as to ensure that the information (e.g., morphogenetic signal) is delivered to cells that are far from the source signal (Chandebois and Faber, 1983; Gass and Hall, 2007).

In relation to the forebrain patterning, the prevailing theory is that the concentration gradients of secreted morphogens [Sonic hedgehog (SHH), WNTs, BMPs] create a positional map of the neural tube, thus creating subdivisions in the dorsoventral and anteroposterior axes (Rubenstein et al., 1998; Vieira et al., 2010; Burbridge et al., 2016; Xie and Dorsky, 2017). These subdivisions are later compartmentalized into smaller progenitor domains during the process of regionalization. The progenitor domains are specified by cross-repressive interactions of transcription factors in the neuroepithelium. A part of the neuroepithelium with a shared set of TFs later generates neuronal subpopulations with common traits like neurotransmitter phenotype or axonal connections (Alvarez-Bolado, 2019; Diaz and Puelles, 2020). In the following

paragraphs, we will discuss morphogens (SHH, FGFs, WNTs/WNT antagonism) secreted by primary and secondary organizers, and comment on their role in the patterning of the hypothalamic primordium. In addition, the reader can find the detailed description of hypothalamic induction and patterning in reviews by [Bedont et al. \(2015\)](#), [Burbridge et al. \(2016\)](#), [Xie and Dorsky \(2017\)](#), [Alvarez-Bolado \(2019\)](#), [Diaz and Puelles \(2020\)](#). However, these studies should be interpreted with a caveat. The authors used different models of hypothalamic development (i.e., prosomeric or modified columnar model), so the reader should be aware of the difference in the brain axis when interpreting the direction of morphogen activity.

### Sonic hedgehog signaling

*Shh* is a morphogen secreted from the mesendodermal tissue—the notochord and the prechordal plate, which confers medial (ventral) identity to the neural plate and consequently the neural tube ([Shimamura and Rubenstein, 1997](#); [Rubenstein et al., 1998](#); [Wilson and Houart, 2004](#)). Experimental evidence points to a crucial role of *Shh* in medial (ventral) patterning of the entire mouse CNS ([Chiang et al., 1996](#)). *Shh* is expressed throughout the axial mesendoderm (notochord and prechordal plate), yet it can induce different transcriptional programs at different A-P positions along the neural tube. For example, *Shh* from the notochord induces the expression of *Nkx6-1* posteriorly, whereas prechordal *Shh* induces *Nkx2-1* expression in the anterior neural tube ([Shimamura and Rubenstein, 1997](#); [Rubenstein et al., 1998](#); [Vieira et al., 2010](#)).

SHH plays an indispensable role in both the early induction and patterning of the hypothalamic primordium, and its later differentiation and growth ([Blaess et al., 2014](#); [Zhang and Alvarez-Bolado, 2016](#)). However, there is still dispute over the primary source of *Shh* and the induction of the floor plate. Based on experiments in chick embryo, two theories have been proposed. One theory proposes that the floor plate differentiates under *Shh* signaling from the notochord ([Dodd et al., 1998](#); [Placzek et al., 2000](#)), while the other theory proposes that the floor plate and the notochord develop from common precursors originating from the organizer. The floor plate cells are later simply added in the ventral midline as a consequence of the elongation of the embryo in the A-P axis ([Le Douarin and Halpern, 2000](#); [Kiecker and Lumsden, 2012](#)). Another issue is the question of induction of the hypothalamic floor plate. Again, there are two possible explanations, which are discussed at length in the studies by [Puelles and Rubenstein \(2015\)](#), [Fu et al. \(2017\)](#), [Fu et al. \(2019\)](#), and [Diaz and Puelles \(2020\)](#). Briefly, one explanation is that the hypothalamic floor plate differentiates under SHH influence from the underlying prechordal mesoderm ([Burbridge et al., 2016](#); [Fu et al., 2017, 2019](#)), while the other theory proposes that SHH secreted from the notochord induces the hypothalamic floor plate. Hypothalamic floor plate then acts as a secondary organizer and expresses *Shh*, thus influencing the patterning of the basal plate ([Diaz and Puelles, 2020](#)).

In summary, the basal plate is probably specified by cooperative *Shh* signaling from non-neural (prechordal

mesoderm and notochord) and neural (floor plate) sources ([García-Calero et al., 2008](#); [Fu et al., 2019](#); [Diaz and Puelles, 2020](#)). On the other hand, the hypothalamic primordium acts as a neuroepithelial source of *Shh* and the majority of hypothalamic cells belongs to the *Shh* lineage ([Xu et al., 2008](#); [Szabó et al., 2009](#); [Shimogori et al., 2010](#); [Alvarez-Bolado et al., 2012](#); [Blaess et al., 2014](#); [Zhang and Alvarez-Bolado, 2016](#)). In addition to these hypothalamic progenitors, the *Shh*<sup>+</sup> progenitors can also be found in the mesencephalic floor plate. These cells will constitute the dopaminergic neurons of the adult ventral tegmental area (VTA) and SN ([Joksimovic et al., 2009](#); [Blaess et al., 2011](#)).

Another source of *Shh* signaling in the developing forebrain is the zona limitans intrathalamica (ZLI), also called the mid-diencephalic organizer ([Kiecker and Lumsden, 2004](#)). This secondary organizer is located at the transverse border between prosomere 2 (p2; thalamus) and p3 (prethalamus), thus influencing the A-P patterning and nucleogenesis in the diencephalon ([Scholpp and Lumsden, 2010](#); [Martinez-Ferre and Martinez, 2012](#)). The exact mechanism by which ZLI forms is still being debated and different mechanisms have been proposed for amniotes and anamniotes (for review, see [Vieira et al., 2005](#); [Vieira and Martinez, 2006](#); [Scholpp and Lumsden, 2010](#)). Both hypothalamic and diencephalic (i.e., thalamic) primordia are under *Shh* influence. However, there is a significant difference between them, indicating their separate developmental origin. The hypothalamus is under the influence of both non-neural *Shh* signals (from the notochord and the prechordal mesoderm) and neural *Shh* (from the floor and basal plate), whereas the thalamus is only under the influence of non-neural *Shh* morphogenetic signals from the ZLI, thus having no cells of *Shh* lineage ([Zhang and Alvarez-Bolado, 2016](#)).

*Shh* expression can also be found in other parts of the brain. The expression patterns of both mRNA and protein products of *Shh* signaling cascade have been studied in rodent models and human developing brain. In adult rat brain, *Shh* mRNA has been found in the GP, whereas STN and several hypothalamic nuclei express the SHH receptor *Ptch* ([Traiffort et al., 1999](#)). Similar expression patterns have been reported in the developing human brain ([Memi et al., 2018](#)). In addition to influencing hypothalamic neuronal lineages, *Shh* exerts influence on the development of neurons in MGE and lateral ganglionic eminence (LGE) destined for striatum, pallidum, and cortex ([Kohtz et al., 1998](#)).

To summarize, early non-neural expression of SHH is important for the patterning of the entire forebrain. However, hypothalamic and telencephalic neuronal expression of SHH, coupled with its absence from the thalamus, supports the notion that hypothalamic primordium is a distinct developmental site and not a part of diencephalon.

### Wnt signaling

Wnts are important morphogens that posteriorize the neural plate, thus influencing the initial A-P patterning ([Wilson and Houart, 2004](#); [Vieira et al., 2010](#)). Wnts and



Wnt antagonists create a gradient of Wnt activity, which is translated into positional information along the A-P axis of the neural tube (Wilson and Houart, 2004; Xie and Dorsky, 2017). In later stages of forebrain development, Wnts act as important regulators of anteroposterior patterning (Bedont et al., 2015; Burbridge et al., 2016). Moreover, Wnts influence somitogenesis, and induction of neural crest cells, and their delamination and migration (Schmidt et al., 2008). Wnt signaling specifies hypothalamic and diencephalic fates, characterized by *Foxd1* expression, while Wnt antagonism specifies *Foxg1*<sup>+</sup> anterior telencephalic fates (Blackshaw et al., 2010; Burbridge et al., 2016; Newman et al., 2018). In zebrafish embryos, Wnt signaling through *Wnt8b* plays a role in neurogenesis in the posterior hypothalamus (Lee et al., 2006). Similar mechanism was described in mouse embryo where gain-of-function and loss-of-function studies of Wnt/ $\beta$ -catenin signaling pathway revealed its role in posteriorizing the hypothalamic primordium. Specifically, loss-of-function mutants exhibited a reduced size of the posterior hypothalamus (evidenced by loss of supramammillary and mammillary markers; e.g., *Foxa1*, *Irx5*, *Foxb1*, *Sim1*), while gain-of-function mutants had an expanded expression domain of posterior and pre-mammillary markers (*Pitx2*, *Lhx5*), with reduced expression domains of a subset of anterior markers (Newman et al., 2018). Furthermore, *Wnt8b* has an evolutionary conserved expression in caudal, mammillary hypothalamus (or ventralmost hypothalamic region in the prosomeric model; Xie and Dorsky, 2017). This mammillary and retromammillary expression domain was also described in human embryos during early gestation (Lako et al., 1998). Diaz and Puelles (2020) hypothesize that the *Wnt8b* expression could mark the cells of the hypothalamic ventricular organ, a possible (yet still poorly understood) secondary organizer involved in patterning of the basal hypothalamus, namely its tuberal and mammillary part. The experiments in chick embryos provided evidence that *Wnt8b* is also an important marker of ZLI, thus indicating its role in diencephalic patterning and corroborating the prosomeric organization of the forebrain (Garda et al., 2002; Garcia-Lopez et al., 2004).

In summary, *Wnts* are important factors in patterning of both hypothalamus and diencephalon, with *Wnt8b* serving as a marker of a possible secondary organizer involved in the development of the hypothalamus.

### Fibroblast growth factor signaling

FGF family member *Fgf8* initiates neural induction and later acts as an inductive signal capable of eliciting different molecular responses at different levels of the A-P axis of the neural tube (e.g., anterior expression of *Foxg1/BF-1*, posterior expression of *En2*; Rubenstein et al., 1998; Wilson and Houart, 2004; Vieira et al., 2010). For instance, *Fgf8* is implicated in the development of the isthmus organizer located at the mid-hindbrain boundary, a secondary organizer important for the generation of dopaminergic and serotonergic neurons (Hynes and Rosenthal, 1999). Moreover, *Fgf8* can be found in the anterior neural ridge, a secondary organizer that influences telencephalic patterning, which later transforms into the hypothalamo-

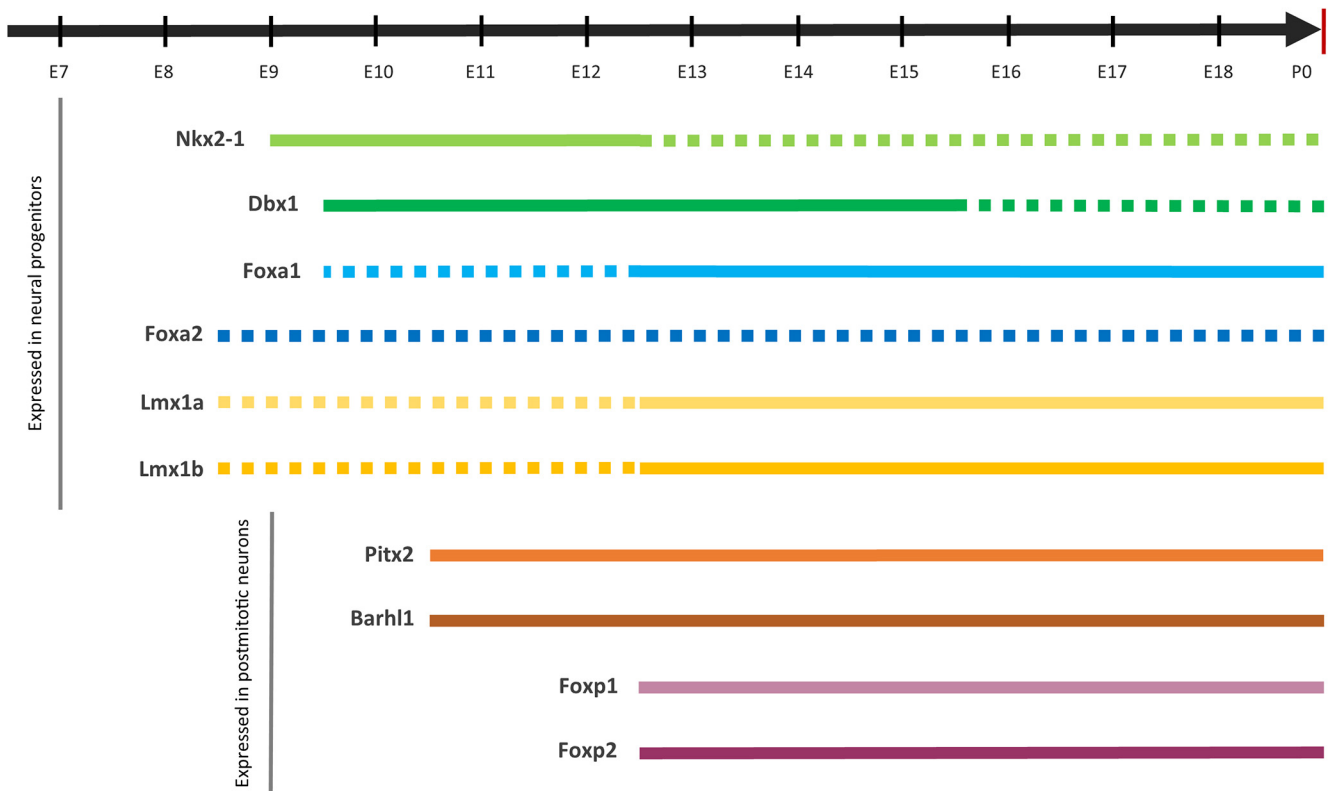
telencephalic roof plate (Rubenstein et al., 1998; Diaz and Puelles, 2020). The anterior neural ridge had classically been perceived as having a rostralizing effect on the prosencephalon, but, within the prosomeric model, this organizer has a dorsalizing effect on both the hypothalamic regions and the telencephalon (Diaz and Puelles, 2020). In the prosomeric model, the rostralmost part of the hypothalamo-telencephalic complex is acknowledged as another organizer domain with *Fgf8* secretion, called the acroterminal domain. The *Fgf8* signal from this organizer spans from the end of the mammillary floor plate to the place of the future anterior commissure (Ferran et al., 2015; Diaz and Puelles, 2020; López-González et al., 2021). Together with *Shh*, *Fgf8* plays a role in the morphogenesis of midline structures, and the splitting of the eye primordium and the telencephalic vesicle (McCabe et al., 2011; Dubourg et al., 2016).

Experiments with *Fgf8* mutant mice elucidated the role of *Fgf8* in prosencephalic/telencephalic patterning. It seems that *Fgf8* promotes rostroventral telencephalic fates, since *Fgf8* hypomorphic mice have a caudalized anterior telencephalon (as evidenced by the expanded expression zones of *Emx2*, *Otx2*, *COUP-TF1*). Moreover, the ventral telencephalon (i.e., the septum and the ganglionic eminences) is lost (Garel et al., 2003; Storm et al., 2006), and hypothalamo-pituitary malformations are also present (Brooks et al., 2010; McCabe et al., 2011; Diaz and Puelles, 2020). *Fgf8* secreted from the acroterminal domain might influence the development of the retromammillary area and its derivatives, mainly the STN and the ventral pre-mammillary nucleus, primarily by exerting trophic influence on migrating neuronal populations of these nuclei (López-González et al., 2021). This is substantiated by observations that mouse *Fgf8* hypomorphs exhibit no migration deficit, whereas cellular populations of ventral pre-mammillary nucleus and STN are severely decreased (López-González et al., 2021).

In conclusion, *Fgf8* secreted from the anterior neural ridge and the acroterminal domain has dorsalizing and rostralizing effects (respectively) on the hypothalamic primordium.

### Transcription Factors in the Developing and Adult Subthalamic Nucleus

Unique combinations of morphogens induce the expression of transcription factors, which regulate the further development and specification of the STN area. The concept of genomic regulatory networks (Beccari et al., 2013) helps us to understand how the molecular complexity of the forebrain emerges. The TFs higher up in the hierarchy control the specification of the progenitors, and hierarchically lower TFs are expressed in postmitotic cells of restricted lineage (Beccari et al., 2013; Alvarez-Bolado, 2019). These postmitotic TFs also regulate the migration, axon guidance, and acquisition of other phenotypic characteristics (Alvarez-Bolado, 2019). The TFs presented here have been selected based on the data available from the literature, observed expressions in the *Allen Brain Atlas* of mouse and human brain development, as well as data on differentially expressed genes from human prenatal



**Figure 3.** Gene expression timelines during mouse embryonic development. Full lines represent mRNA expression detected by ISH in the hypothalamic retromammillary area/developing STN. Dashed lines represent the expression detected in other parts of the developing forebrain. For *Foxa2*, dashed lines indicate there are no conclusive results about its expression pattern in the developing STN (see text).

microarray studies. We organized TFs according to the position within the genomic regulatory network (i.e., neural progenitors, postmitotic neurons). All data presented here pertain to the developing mouse brain, if not specified otherwise.

### Transcription factors expressed in neural progenitors

#### Developing brain homeobox protein 1

Developing brain homeobox protein 1 (*Dbx1*) belongs to the homeobox family of transcription factors and can be detected in the cephalic primordium around E8.5 (Causeret et al., 2011). In the hypothalamic and diencephalic primordium, *Dbx1* expression was detected at approximately E9.5 (Lu et al., 1992; Shoji et al., 1996). From E10.5 to E15.5, its signal can be detected in the ventricular zone of the basal hypothalamus, mammillary and retromammillary area, ZLI, and the pretectum (p1; Figs. 2A, 3, Table 1; Shoji et al., 1996). As progenitors differentiate and migrate away from the ventricular zone, *Dbx1* is downregulated (Sokolowski et al., 2016). During the embryonic period, *Dbx1* knockouts exhibited a loss of *Npy* expression in the arcuate nucleus, along with the loss of *Pmch* and *Hcrt* expression in the lateral hypothalamus. Therefore, *Dbx1* is an important determinant of orexigenic neurons in the arcuate nucleus and lateral hypothalamus, constitutive parts of feeding and stress response circuits (Sokolowski et al., 2015; Alvarez-Bolado, 2019).

*Dbx1* is also identified as one of the TFs regulating floor plate progenitors. Initial studies analyzing mesencephalic dopaminergic progenitors in the floor plate could not establish a clear-cut rostral border of the domain, thus prompting some authors to term the entire area mesodiencephalic continuum (Puelles and Rubenstein, 2015; Nouri and Awatramani, 2017; Puelles, 2019). This raised a question of whether glutamatergic STN and dopaminergic neurons share a common origin, as the rostral border could extend into hypothalamic territory. Recent experiments in mouse embryos proposed that the floor plate could be divided into at least two subdomains in A-P axis. One of these domains is anterior, expresses *Dbx1*, and gives rise to a glutamatergic population (STN included), while the posterior domain, characterized by *En1*, gives rise to dopaminergic neurons of SN pars compacta (SNc) and VTA (Nouri and Awatramani, 2017). This finding was further supported by the results of single-cell profiling that have identified *Dbx1* in *Lmx1a*<sup>+</sup> glutamatergic cells of the mesodiencephalic continuum (Kee et al., 2017). Based on these results, we can conclude that glutamatergic and dopaminergic neurons, although generated in bordering domains, could be distinguished by their different transcriptional profiles.

#### Nk2 homeobox 1

Nk2 homeobox 1 [*Nkx2-1* (also known as *TTF-1*)] is another TF belonging to the homeobox gene family. In the developing mouse brain, *Nkx2-1* expression was first detected at approximately E8.75 (Shimamura

**Table 1: A Summary of the discussed transcription factors, their mRNA expression zones in the rodent and human brain, and the list of papers in which this information can be found**

Transcription factor	Species	Expression zone in the brain	Reference
Dbx1	Embryonic mouse	Mesodiencephalic floor plate	Nouri and Awatramani, 2017; Kee et al., 2017
	Adult mouse	Mammillary and retromammillary area, ZLI, pretectum, ARC, LH	Lu et al., 1992; Shoji et al., 1996; Sokolowski et al., 2015, 2016
Nkx2-1	Embryonic mouse and rat	MGE, preoptic area, basal hypothalamic neuroepithelium	Kimura et al., 1996; Sussel et al., 1999; Nakamura et al., 2001; Flames et al., 2007; Xu et al., 2008; Puelles and Rubenstein, 2015; Murcia-Ramón et al., 2020
	Fetal human	MGE, preoptic area	Pauly et al., 2013
	Adult mouse and rat	Cortical and striatal interneurons, prototypic neurons in the GPe, ARC, VMH, and MMN	Nakamura et al., 2001; Magno et al., 2009; Flandin et al., 2010; Abdi et al., 2015; Dodson et al., 2015
Foxa1	Embryonic mouse	Mesodiencephalic floor plate, retromammillary area	Lin et al., 2009; Mavromatakis et al., 2011; Díaz et al., 2014; López-González et al., 2021
Lmx1a	Adult mouse	STN, SMN, VPM, VTA, and PH	Gasser et al., 2016
	Embryonic mouse	Mesodiencephalic floor plate, roof plate and derivatives	Manzanares et al., 2000; Lin et al., 2009; Doucet-Beaupré et al., 2015
Lmx1b	Embryonic and adult mouse	SMN, VPM, STN, VTA, SNc	Failli et al., 2002; Zou et al., 2009; Hoekstra et al., 2013
	Embryonic mouse	Mesodiencephalic floor plate	Lin et al., 2009; Doucet-Beaupré et al., 2015
Pitx2	Embryonic and adult mouse	STN, PSTN, VPM, PH, LH, SNc, raphe nuclei	Asbreuk et al., 2002; Dai et al., 2008; Skidmore et al., 2008
	Embryonic mouse	Ventral mesencephalon, basal plate p1–p3, basal plate of hp1, ZLI, ZI; alar plate of the mesencephalon	Muccielli et al., 1996; Martin et al., 2002, 2004; Kim et al., 2020
Barhl1	Adult mouse	STN, ZI, SMN, MMN, pituitary gland, superior colliculus	Martin et al., 2002, 2004; Skidmore et al., 2008; Waite and Martin, 2015
	Embryonic mouse	Basal plate p1–p3, retromammillary and mammillary area, ZLI, pretectum, inferior and superior colliculi, and rhombic lips	Bulfone et al., 2000; Rachidi and Lopes, 2006
Foxp1	Fetal human	Basal plate p1–p3, retromammillary and mammillary area, ZLI, pretectum, inferior and superior colliculi, rhombic lips	Lopes et al., 2006
	Embryonic mouse and rat	Cortical plate, LGE, striatal projection neurons, hypothalamic basal plate, CA1 field of the hippocampus, subiculum, cerebellum	Ferland et al., 2003; Takahashi et al., 2003; Tamura et al., 2004; Co et al., 2020; Kim et al., 2020
Foxp2	Adult mouse and rat	Cortical layers 3–5, striatum, CA1 field of the hippocampus, subiculum, SMN, MMN, STN, cerebellum	Lai et al., 2003; Takahashi et al., 2003; Tamura et al., 2004; Co et al., 2020
	Fetal human	Striatum, thalamus, STN, SN	Teramitsu et al., 2004; Co et al., 2020
	Embryonic mouse and rat	Cortical plate, LGE, striatal projection neurons, hypothalamic basal plate, thalamus, amygdala, and cerebellum	Ferland et al., 2003; Lai et al., 2003; Takahashi et al., 2003; Co et al., 2020
	Adult mouse and rat	Cortical layer 6, striatum, thalamus, amygdala, SMN, MMN, SN, STN, cerebellum, and GP	Ferland et al., 2003; Takahashi et al., 2003; Fong et al., 2018; Co et al., 2020
	Fetal human	Striatum, thalamus, STN, SN, and GPe	Lai et al., 2003; Teramitsu et al., 2004; Co et al., 2020

ARC, Arcuate nucleus; LH, lateral hypothalamus; PH, posterior hypothalamus; PSTN, parasubthalamic nucleus; SMN, supramammillary nucleus; MMN, mammillary nuclei; VPM, ventral premammillary nucleus. Other abbreviations are the same as the ones used in Figure 2.

et al., 1995, 1997). After E9, the expression can be detected in two domains, one occupying the subpallium—the MGE and preoptic area—and the other occupying the hypothalamic basal plate (Figs. 2A, 3, Table 1; Sussel et al., 1999; Marín et al., 2000; Flames et al., 2007; Xu et al., 2008).

The hypothalamic basal plate has been defined as a *Shh*<sup>+</sup>/*Nkx2-1*<sup>+</sup> territory (Shimamura et al., 1997; Puelles et al., 2012). *Nkx2-1*<sup>+</sup> progenitors can be found in the terminal and peduncular hypothalamus, while *Nkx2-1*<sup>+</sup> neurons contribute to adult arcuate nucleus, ventromedial and dorsomedial nuclei, and the mammillary nucleus, as

demonstrated in both mice and rats (Nakamura et al., 2001; Puelles et al., 2012; Puelles and Rubenstein, 2015; Alvarez-Bolado, 2019; Murcia-Ramón et al., 2020; Barbier and Risold, 2021). The *Nkx2-1*-null mice have an abnormal hypothalamic anatomy, with many hypothalamic nuclei missing or underdeveloped (Kimura et al., 1996). Single-cell profiling of these mutants corroborated previous findings and established *Nkx2-1* as a repressor of prethalamic identity (Kim et al., 2020). Curiously, it appears that *Nkx2-1* is absent from the retromammillary area (Puelles et al., 2012; Puelles and Rubenstein, 2015). Recent experiments with E18.5 *Nkx2-1<sup>cre/+</sup>;tdTomato<sup>flox/+</sup>* mouse embryos actually established that the STN remains positive for red fluorescent protein, while NKX2-1 protein was absent, suggesting that the cells migrating away from the retromammillary area silence the *Nkx2-1* expression, similarly as tangentially migrating cortical interneurons (Sussel et al., 1999; Marín et al., 2000; Murcia-Ramón et al., 2020). The downregulation most likely occurs at approximately E12.5 as at that time point no *Nkx2-1* can be observed in the ventrocaudal hypothalamus (Murcia-Ramón et al., 2020).

The subpallial expression zone was detected in both mouse and human embryos. In human embryos, the *Nkx2-1* subpallial expression zone was detected in the late embryonic period by *Dlx2/Nkx2-1* colabeled cells in the MGE and preoptic area (Pauly et al., 2013). The MGE is the origin of striatal and cortical GABAergic and cholinergic interneurons. Striatal interneurons retain *Nkx2-1* expression, while cortical interneurons downregulate *Nkx2-1* expression as they start their tangential migration toward the cerebral cortex (Nóbrega-Pereira et al., 2008). These interneurons can be identified and traced by the expression of *Lhx6* (downstream target of *Nkx2-1*) and various markers (e.g., parvalbumin, somatostatin, calbindin; Sussel et al., 1999; Marín et al., 2000; Flames et al., 2007; Xu et al., 2008; Magno et al., 2009; Flandin et al., 2010; Malt et al., 2016). *Nkx2-1* expression was retained in adult globus pallidus, a GABAergic nucleus with neuronal populations originating from the ganglionic eminences and preoptic area (Fig. 2B; Xu et al., 2008; Magno et al., 2009; Flandin et al., 2010; Nóbrega-Pereira et al., 2010). In mice, *Nkx2-1* has now been acknowledged as a marker of pallidal neurons originating from the MGE, expressing parvalbumin, projecting to the STN, and having a high-frequency firing rate (Abdi et al., 2015; Dodson et al., 2015). Interestingly, a recent study of the adult human STN described the expression of NKX2-1 in the STN, along with parvalbumin and calretinin (Bokulić et al., 2021). As mentioned before, postmitotic neurons destined to populate the mouse STN downregulate *Nkx2-1*, so the observed difference between human and mouse STN could indicate the existence of an additional neuronal subclass or a species-specific mechanism regulating its expression.

In summary, *Nkx2-1* is important for the specification of many neuronal classes. However, not all postmitotic neurons retain *Nkx2-1* expression (e.g., cortical interneurons). Evidence points to the conclusion that *Nkx2-1* is necessary for early specification of retromammillary progenitors

destined to become STN. However, there are differences between mice and humans that remain to be explored, as *Nkx2-1* is downregulated after E12.5 in mouse postmitotic STN neurons, while in humans some STN neurons remain *Nkx2-1<sup>+</sup>*.

#### *Foxa1/Foxa2*

*Foxa1* [forkhead box A1 (hepatocyte nuclear factor 3 $\alpha$ )] and *Foxa2* [forkhead box A2 (hepatocyte nuclear factor 3 $\beta$ )] belong to the vertebrate forkhead box family of TFs and have partially overlapping functions during embryonic development (Friedman and Kaestner, 2006; Kaestner, 2010). In the developing neural tube, *Foxa1* and *Foxa2* have been described in the notochord and in the floor plate at approximately E8.0 to E8.5, with *Foxa1* having weaker expression than *Foxa2* (Fig. 3; Ang et al., 1993; Mavromatakis et al., 2011; Puelles et al., 2012; Díaz et al., 2014). In the floor plate, they are a part of a transcriptional network that guides the development of dopaminergic mesodiencephalic progenitors. Both of these TFs have complex interactions with *Shh* (Mavromatakis et al., 2011). The best-studied role of *Foxa1* is its role in proliferation, specification, and maintenance of dopaminergic neurons, which is exhibited through complex interactions with other TFs like *Lmx1a* and *Lmx1b* (Ferri et al., 2007; Lin et al., 2009; Pristerà et al., 2015).

*Foxa1* expression was examined in the mouse hypothalamus where it was observed in the STN, supramammillary nucleus, ventral premammillary nucleus, VTA, and posterior hypothalamic area (Fig. 2, Table 1; Gasser et al., 2016). In a series of elegant experiments, Gasser et al. (2016) have proven the essential role of *Foxa1* in the development of STN. In wild-type mice, *Foxa1* expression in the developing STN was detected at E12.5 (Fig. 3). In the absence of *Foxa1*, STN neurons were born, but they did not differentiate and migrate dorsolaterally, a phenotype also observed in *Pitx2*-deficient mice. Moreover, *Foxa1*-deficient mice at birth had no PITX2, FOXP2, calretinin, and neurotensin expression at the level of presumptive STN. Postmitotic loss of *Foxa1* function did not affect the formation of STN, as evidenced by maintained FOXP2 and 5-HT<sub>2c</sub> receptor expression, but these mice displayed locomotion deficits, neurodegeneration, and cell loss in the STN (Gasser et al., 2016). Recent findings have described a specific subtype of neurons, *Foxa1<sup>+</sup>/Nr4a2<sup>-</sup>*, which originates in the caudal part of retromammillary area and migrates tangentially to become STN (López-González et al., 2021). On the other hand, FOXA2 was not expressed at any analyzed age [E14.5 and postnatal day 0 (P0)] in mouse STN, so the authors assumed that their functions in the developing STN are not overlapping (Gasser et al., 2016). However, Nouri and Awatramani (2017) found a specific subpopulation of *Dbx1<sup>+</sup>* cells in the anterior part of the mesodiencephalic floor plate, which coexpresses PITX2, LMX1A, and FOXA2 in the developing and adult (P28) STN, supramammillary nucleus, and premammillary nuclei.

To conclude, *Foxa1* expression in progenitors is needed to establish STN phenotype, while the conflicting reports about the *Foxa2* expression in the STN indicate that this is

a topic that needs further clarification. Based on these findings, *Foxa1/2* probably do not have overlapping functions in the STN.

#### *LIM homeobox transcription factor 1 $\alpha$* and *LIM homeobox transcription factor 1 $\beta$* (*Lmx1a/Lmx1b*)

*Lmx1a/b* are members of the LIM homeobox family of transcription factors that are expressed during early embryogenesis. *Lmx1b* expression starts at approximately E7.5, whereas *Lmx1a* is expressed at approximately E8.5 to E9 (Doucet-Beaupré et al., 2015). In the CNS, its expression is necessary for the activity of the isthmus organizer, the differentiation of hindbrain serotonergic and spinal dorsal horn neurons (Asbreuk et al., 2002; Dai et al., 2008; Zou et al., 2009). The *Lmx1a* has been described as a dorsalizing agent and controls the development of the roof plate and its derivatives (Manzanares et al., 2000; Millonig et al., 2000). Nevertheless, both TFs are expressed in the ventral mesodiencephalic floor plate where they specify dopaminergic progenitors (Fig. 2A, Table 1; Lin et al., 2009; Deng et al., 2011; Doucet-Beaupré et al., 2015).

High levels of *Lmx1a* mRNA have been found in the mouse posterior hypothalamus, supramammillary and ventral premammillary nucleus, STN, VTA, and SNc from the embryonic period (E12.5) to the early postnatal period (P0–P7; Figs. 2B, 3; Failli et al., 2002; Zou et al., 2009; Hoekstra et al., 2013). When analyzing the expression pattern of these TFs in adult brain, there are conflicting reports. While some authors state there is no *Lmx1a* mRNA after P14 in the aforementioned regions (Hoekstra et al., 2013), other authors described sustained, yet weaker expression in adult animals at 6 months of age (Zou et al., 2009). Interestingly, double-labeling experiments revealed the almost overlapping expression pattern of *Lmx1a* mRNA and LMX1B protein in the STN (Zou et al., 2009).

*Lmx1b* expression was similarly analyzed in the postnatal mouse brain. These experiments showed sustained *Lmx1b* expression at all analyzed ages (from E12.5 to P14) in the posterior and lateral hypothalamus, STN and parasubthalamic nucleus (a small nucleus located at the medial border of rodent STN), and ventral premammillary nucleus (Fig. 2B, Table 1; Asbreuk et al., 2002; Dai et al., 2008). Nevertheless, the *in situ* hybridization (ISH) signal weakened after P14 (Dai et al., 2008). In these regions, *Lmx1b* was expressed in excitatory neurons, while in the SNc and raphe nuclei *Lmx1b*<sup>+</sup> cells colocalized with dopaminergic and serotonergic cells, respectively (Dai et al., 2008). Another TF, PITX2, is necessary for the onset of LMX1B expression in the STN, with both of these TFs colocalizing in the embryonic and adult STN (Asbreuk et al., 2002; Skidmore et al., 2008).

In addition, it is possible that joint cooperative interactions between *Foxa1* and *Lmx1a/b* are required for the specification of STN neurons (Gasser et al., 2016). Moreover, *Lmx1a* may have two expression domains—one caudal, which gives rise to dopaminergic lineage, and the other rostral, in which *Lmx1a* expression overlaps with *Pitx2* and BarH-like homeobox 1 (*Barhl1*),

giving rise to glutamatergic hypothalamic neurons and the prospective STN (Kee et al., 2017; Kim et al., 2020). Surprisingly, single-nucleus RNA-seq of *Pitx2-Cre*<sup>+</sup> cells derived from adult (P28) mouse STN detected hardly any *Lmx1b*, yet *Lmx1a*, *Foxa1*, *Foxp1*, *Foxp2*, and *Barhl1* were abundantly expressed in all analyzed clusters (Wallén-Mackenzie et al., 2020).

In summary, *Lmx1a/b* are important factors in the specification of glutamatergic, dopaminergic, and serotonergic neurons in the hypothalamus, STN, and mesencephalon. Reports indicate that both genes are also present in adult neurons of the aforementioned structures. In the STN, *Lmx1a/b* need additional genes (e.g., *Pitx2* or *Barhl1*) to specify neuronal progenitors to correct phenotype.

#### Transcription factors expressed in postmitotic neurons

##### *Paired-like homeodomain 2*

*Pitx2* belongs to the paired-like homeodomain family of TFs that is important for brain development (Muccielli et al., 1996; Smidt et al., 2000; Lamba et al., 2008; Waite et al., 2013). During development, *Pitx2* mRNA becomes detectable at E9.5 in postmitotic cells of the basal plate at the level of mesencephalic flexure (Muccielli et al., 1996). At later stages of development, from E10.5 to E13.5, *Pitx2* mRNA respects prosomeric boundaries and can be detected in two zones (Figs. 2A, 3). The first expression zone spans across the mesencephalon to the mammillary region, including the ZLI, ZI, retromammillary and mammillary areas, and basal plates of prosomeres p1–p3, with the second zone of expression being the alar plate of the mesencephalon (the primordium of the superior colliculi; Fig. 2, Table 1; Muccielli et al., 1996; Martin et al., 2002, 2004). From E16.5 throughout adulthood, *Pitx2* expression is prominent in the STN, ZI, the nuclei of mammillary complex, deep gray layer of the superior colliculus, and the anterior and intermediate lobes of the pituitary gland, indicating it has a role in the maintenance of neuronal identity (Martin et al., 2002, 2004; Waite and Martin, 2015; Xie and Dorsky, 2017; Guo and Li, 2019; Kim et al., 2020; Mickelsen et al., 2020).

The role of *Pitx2* in the development of the rodent STN has been thoroughly studied. Double-labeling immunohistochemical experiments demonstrated that PITX2<sup>+</sup> cells in the STN are neurons as they colocalize with NeuN and calretinin (Martin et al., 2002, 2004). However, *Pitx2* is not a determinant of a neurotransmitter phenotype, as it is expressed in both GABAergic cells of ventral mesencephalon (which will later become a part of the superior colliculus), and glutamatergic cells in the STN, posterior hypothalamus, and the mammillary region (Westmoreland et al., 2001; Martin et al., 2002; Schweizer et al., 2014; Waite and Martin, 2015). In wild-type mice, the migration of *Pitx2*<sup>+</sup> cells is observed from E10.5 to E14.5, with the majority of migration taking place from E12.5 to E14.5, rostrally and laterodorsally from the retromammillary area to their position in the adult STN (Martin et al., 2004; Skidmore et al., 2008). In the *Pitx2* knock-out mice, no *Pitx2* mRNA can be observed at the level of the presumptive STN at E14.5, but the signal can be observed

more medially, suggesting an arrested migration of future STN neurons (Martin et al., 2004; Skidmore et al., 2008; 2012). The studies characterizing subtypes of STN neurons showed that the expression of *Pitx2* is necessary for the expression of several key TFs in the STN. For example, the expression of *Pitx2* is necessary for the expression of *Lmx1b* in the STN, whereas the loss of *Lmx1b* does not preclude *Pitx2* expression (Asbreuk et al., 2002; Skidmore et al., 2008). The colocalization of *Pitx2* with *Lmx1b* in the STN persists postnatally (Asbreuk et al., 2002). On the other hand, the expression of FOXP1 and FOXP2 was preserved, but reduced in the murine embryonic STN lacking *Pitx2* function (Skidmore et al., 2008), suggesting that other neuronal lineages beside *Pitx2*<sup>+</sup> exist in the STN. It has been suggested that *Pitx2*, along with *Barhl1*, could be used as markers of a specific subset of *Lmx1a*<sup>+</sup> progenitors adapting a rostral, glutamatergic fate in the ventral mesodiencephalic area, thus distinguishing developing STN neurons from dopaminergic neurons (Kee et al., 2017).

*Pitx2* is now an established marker of postmitotic STN neurons; therefore, *Pitx2* promoter is now widely used in various experimental settings when precise labeling of STN neurons is required, for example, single-cell/nuclei sequencing or creating conditional transgenic mice (Schweizer et al., 2014, 2016; Wallén-Mackenzie et al., 2020). However, one must be careful when interpreting data from these studies as not all STN neurons are *Pitx2*<sup>+</sup> (Skidmore et al., 2008).

#### *BarH-like homeobox 1*

*Barhl1* is a member of the BarH gene family, which has a restricted expression in the CNS during development (Bulfone et al., 2000; Reig et al., 2007). *Barhl1* expression was first detected in the caudal diencephalon at E9.5. At E10.5, the rostral expression domain encompasses the basal plate of p1–p3 and hp1, the ZLI, and the pretectum (p1), whereas the caudal expression domain is confined to the midbrain–hindbrain boundary (Figs. 2A, 3; Bulfone et al., 2000; Rachidi and Lopes, 2006). Interestingly, from E12.5 to birth, *Barhl1* is expressed in the mammillary region and in the alar plate forming the inferior and superior colliculi, similar to the expression pattern reported for *Pitx2* (Fig. 2B, Table 1). In the hindbrain, *Barhl1* may be found in the rhombic lips, a transient structure giving rise to cerebellar granular cells (Bulfone et al., 2000; Lopes et al., 2006; Rachidi and Lopes, 2006). Importantly, these expression patterns have also been observed in human embryonic and fetal brain (Lopes et al., 2006). There are indications that *Barhl1* expression, at least in the basal plate, is dependent on *Shh* signaling, while its alar expression is regulated by BMPs (Bulfone et al., 2000; Lopes et al., 2006; Rachidi and Lopes, 2006; Martinez-Lopez et al., 2015).

*Barhl1* expression in STN was specifically described in adult (P28) *Pitx2-Cre* and embryonic *Lmx1a*<sup>EGFP</sup> mice, leading to a conclusion that there is a significant proportion of *Pitx2-Barhl1* or *Lmx1a-Barhl1* colocalization in STN cells, with high levels of expression and significant overlap of all three TFs in the adult STN (Kee et al., 2017; Wallén-Mackenzie et al., 2020).

#### *Forkhead box 1 and Forkhead box 2*

Forkhead box 1 (*Foxp1*) and *Foxp2*, members of the forkhead box family of TFs, are best known for their role in brain development and acquiring speech and language functions (Enard et al., 2002). In the developing murine brain, *Foxp1* and *Foxp2* are expressed after E12.5 and their expression is sustained during adulthood, although at lower levels (Ferland et al., 2003; Takahashi et al., 2003; Co et al., 2020). *Foxp1/2* hypothalamic expression was limited to the basal plate of hp1 prosomere, specifically the supramammillary, ventral premammillary, and mammillary nuclei (Fig. 2A, Table 1; Ferland et al., 2003; Teramitsu et al., 2004; Kim et al., 2020; Mickelsen et al., 2020).

In the developing mouse STN, *Foxp1* mRNA was first observed at E13.5 and persisted until P14 (Fig. 3). Interestingly, adult mouse STN apparently has no *Foxp1* mRNA signal (Tamura et al., 2004; Philips et al., 2005). In the developing human brain, both FOXP1 and FOXP2 were expressed in the STN during midgestation (22 post-conceptual weeks); however, FOXP2 expression was stronger (Teramitsu et al., 2004), and the FOXP2 protein can be detected in adult STN (Bokulić et al., 2021). These postmitotic markers were found in human fetal striatum at 11 gestational weeks, so perhaps they are also expressed in the STN earlier than previously reported (Pauly et al., 2013). As was already discussed, there have been attempts at profiling subtypes of subthalamic neurons. Despite *Pitx2* being widely used as a marker of STN neurons, some results suggest there is a subtype of *Pitx2*<sup>-</sup>/*Foxp1*<sup>+</sup> or *Foxp2*<sup>+</sup> neurons (Skidmore et al., 2008). Single-cell RNA sequencing of mouse ventral mesodiencephalic area assigned *Foxp1* and *Foxp2* to both developing glutamatergic and dopaminergic populations (Kee et al., 2017).

*Foxp1/2* are also important for the specification of various neuronal populations in the basal ganglia. *Foxp1* and *Foxp2* mRNA appears in the subventricular zone of the LGE. Both TFs are expressed in postmigratory striatal projection neurons, with *Foxp2* mRNA in striosomes and *Foxp1* mRNA equally expressed in matrix and striosomes (Takahashi et al., 2003; Tamura et al., 2004; Teramitsu et al., 2004; Takahashi et al., 2010; Fong et al., 2018; Co et al., 2020). Interestingly, *Foxp1/2* expression patterns diverge in other basal ganglia structures. *Foxp1* mRNA is absent from both mouse and human GP, whereas *Foxp2* is expressed at low levels (Ferland et al., 2003; Tamura et al., 2004; Co et al., 2020). The SN has both *Foxp1* and *Foxp2* expression, although *Foxp2* is more prominent (Fig. 2B, Table 1; Ferland et al., 2003). *Foxp2* is now an established marker of a specific, arky pallidal neuronal population in the GPe, which originates from the LGE/CGE (caudal ganglionic eminence) and projects to the striatum (Abdi et al., 2015; Dodson et al., 2015).

In conclusion, *Foxp1/2* are important determinants of basal ganglia neuronal populations and hypothalamic nuclei derived from the basal plate of the prosomere hp1. Both of these genes can be found in the STN where they possibly determine a *Pitx2*-independent neuronal subpopulation, but this remains to be further explored with double-labeling experiments.

## The transcriptional profile of subthalamic nucleus

Studies using the classical model of diencephalic development generated many important pieces of data about the place of origin of STNs. However, the advent of molecular biology exposed all the shortcomings of classical anatomic/morphologic concept. A conceptual framework of the prosomeric model gave us a full appreciation of the vast data on gene expression in the developing hypothalamic and diencephalic primordium. Within this framework, it became easier to trace the lineage of individual neurons and nuclei. Analysis of transcription factors involved in the development of the STN and surrounding structures taught us many important lessons.

First, it appears that there is no single specific marker of STN neurons. The diversity of TFs found in the STN suggests that this nucleus harbors a more transcriptionally heterogeneous neuronal population than was previously thought. This finding is not surprising given that single-cell sequencing experiments revealed a complex composition of other basal hypothalamic nuclei (i.e., mammillary bodies, supramammillary, and ventral premammillary nuclei; Mickelsen et al., 2020; López-González et al., 2021). Indeed, if we summarize our findings, we find that there is a set of shared TFs among the STN, surrounding hypothalamic glutamatergic neurons, and mesodiencephalic dopaminergic neurons. The neuronal population of the STN is probably specified by a combination of the discussed TFs and depends on their timing and level of expression. For instance, *Foxa1* and *Lmx1a/b* can be found in the mesodiencephalic dopaminergic neurons and in the basal hypothalamus (Kee et al., 2017; Kim et al., 2020; Mickelsen et al., 2020; Zhang et al., 2021). The expression of these TFs points to a shared progenitor zone in the floor/basal plate, which is probably influenced by *Shh* signaling. However, as discussed by Nouri and Awatramani (2017), *Dbx1* could indicate an anterior floor plate region that will eventually give rise to glutamatergic populations like the STN. Taking into account everything discussed thus far, one can hypothesize that the progenitors of the glutamatergic STN could be defined by the expression of *Dbx1*, *Foxa1*, and *Lmx1a/b* (Fig. 3). As these progenitors exit cell cycle, they start to express postmitotic markers *Barhl1*, *Foxp1/2*, and *Pitx2* (Fig. 3; Kee et al., 2017; Kim et al., 2020; Mickelsen et al., 2020; Zhang et al., 2021). The exact spatiotemporal expression of these TFs in STN remains to be fully elucidated. Also, *Nkx2-1* is clearly indispensable for the formation of the basal hypothalamus in rodent models, yet it is absent from the STN from E12.5 onward (Kimura et al., 1996; Nakamura et al., 2001; Kim et al., 2020; Murcia-Ramón et al., 2020). Nevertheless, there have been reports of NKX2-1 expression in the adult human STN (Bokulić et al., 2021), so these discrepancies between model animals and humans remain to be further investigated.

Contrary to molecular phenotype, connectivity and functional properties of STN have been extensively studied in animal models, human and primate neuroimaging, and electrophysiological experiments (Mallet et al., 2007; Lambert et al., 2012; Haynes and Haber, 2013; Alkemade et al., 2015). According to the prevailing tripartite anatomofunctional

division of the STN, the dorsal part processes sensorimotor information, while the ventral part processes cognitive and affective information (Alexander et al., 1990; Parent and Hazrati, 1995; Joel and Weiner, 1997; Temel et al., 2005). The data about the molecular phenotype of neuronal subpopulations in these functional regions is still lacking. Progress has been made in this field with the work of Parolari et al. (2021), who showed that a subpopulation of STN neurons expressing GABA<sub>A</sub> receptor subunit *Gabrr3* projects to the GP and SNr and modulates repetitive grooming in mice. Further studies are needed to link molecularly distinct subpopulations with the observed patterns of connectivity and functional properties.

## Clinical Importance of STN

The involvement of STN in motor control has been demonstrated first in patients with hemiballism, a neurologic disorder that manifests with unilateral, involuntary spasmodic movements of limbs (Postuma and Lang, 2003; Marani et al., 2008). Nowadays, STN is clinically important as a deep-brain stimulation (DBS) target for the treatment of PD (Kumar et al., 1998; Hamani et al., 2005; Benabid et al., 2009). However, the STN is not purely a motor nucleus. Several studies in experimental animals demonstrated that the STN modulates different aspects of behavior such as repetitive and compulsive behavior (Winter et al., 2008; Lewis et al., 2018; Parolari et al., 2021), motivational processes (Rouaud et al., 2010; Pelloux and Baunez, 2013), and impulsivity and inhibition control (Baunez and Lardeux, 2011; Rossi et al., 2015). The quest to elucidate the functional roles of STN in the human brain is limited to observing the side effects of DBS in parkinsonian patients (Jahanshahi et al., 2000; Temel et al., 2005; Voon et al., 2006; Saleh and Okun, 2008; Voon et al., 2017). Another possible avenue of human STN research is the use of NDDs as “naturally occurring experiments.” Because of the disruption of normal brain development in NDDs, one can link the observed behavioral changes to the changes in gene expression, number, and morphology of neurons or neuronal connectivity patterns. Currently, there is no evidence for the involvement of STN in any NDD, primarily because of the lack of studies investigating this question. However, there are indirect evidence that STN might be involved in some NDDs.

In a current model of NDDs, a genetic mutation or a disruption of a developmental process leads to structural changes in specific brain regions, which lead to functional and behavioral changes (Mitchell, 2015). The genes involved in the pathophysiology of NDDs code for a vast array of proteins (Mitchell, 2011), but here we will describe morphogens (e.g., *SHH* and *FGF8*; Dubourg et al., 2007; Roessler and Muenke, 2010; Dubourg et al., 2016; Roessler et al., 2018) and transcription factors (e.g., *FOXP1* and *FOXP2*; Enard, 2011; Bacon and Rappold, 2012; Meerschaut et al., 2017; Braden et al., 2021). Mutations in morphogens can cause vast developmental defects, whereas mutations in TFs lead to more subtle phenotypes. Holoprosencephaly (HPE) is a multitietiological NDD that serves as an example of an NDD where a disruption of a basic neurodevelopmental plan leads to observable brain and craniofacial malformations

**Table 2: A summary of morphogens and transcription factors implicated in the development of STN that have previously been linked to various neurodevelopmental disorders**

Morphogen/ Transcription factor	Neurodevelopmental disorder	Reference
<i>SHH</i>	Holoprosencephaly	Dubourg et al., 2007; Roessler and Muenke, 2010
	Schizophrenia	Betcheva et al., 2013; Boyd et al., 2015; Yao et al., 2016
	Autism spectrum disorder	Yao et al., 2016; Patel et al., 2017; Kumar et al., 2019; Upadhyay et al., 2021
	Attention deficit-hyperactivity disorder	Heussler et al., 2002
<i>FGF8</i>	Language impairment	Santiago et al., 2006
	Holoprosencephaly	Dubourg et al., 2016; Roessler et al., 2018
	Autism spectrum disorder	Clarke et al., 2012; Rubenstein, 2010
<i>NKX2-1</i>	Schizophrenia	Malt et al., 2016
	Autism spectrum disorder (in BHC)	Milone et al., 2019
	Attention deficit-hyperactivity disorder (in BHC)	Gras et al., 2012
<i>LMX1A/LMX1B</i>	Schizophrenia	Bergman et al., 2010
	Autism spectrum disorder ( <i>LMX1B</i> )	Thanseem et al., 2011
<i>FOXP1/FOXP2</i>	Autism spectrum disorder	Bacon and Rappold, 2012; Cristino et al., 2014; Co et al., 2020
	Schizophrenia ( <i>FOXP2</i> )	Tolosa et al., 2010
	Speech and language disorder	Enard et al., 2002; Lai et al., 2003
	<i>FOXP1</i> -related intellectual disability syndrome	Meerschaut et al., 2017; Lozano et al., 2021

BHC, Benign hereditary chorea.

(ten Donkelaar et al., 2014b). Mutations of the *SHH* signaling pathway and *FGF8* gene are commonly found in patients with HPE (Dubourg et al., 2016; Roessler et al., 2018). In a chapter about induction and patterning of the forebrain, we discussed the complex spatiotemporal expression patterns of these morphogens, which could account for the great variability of the clinical phenotypes of HPE (ten Donkelaar et al., 2014b; Diaz and Puelles, 2020). On the other hand, cognitive impairments caused by mutations in *FOXP1* and *FOXP2* genes are perceived as neurobehavioral disorders, or NDDs in a “broader sense” (ten Donkelaar et al., 2014a). Neurobehavioral disorders like autism spectrum disorder (ASD), schizophrenia, intellectual disability, and attention deficit-hyperactivity disorder (ADHD) are characterized by the presence of various neuropsychiatric symptoms (ten Donkelaar et al., 2014a; Mitchell, 2015). The etiology of such disorders is complex, however much effort is put into elucidating genetic causes (Mitchell, 2011). Although *FOXP1* and *FOXP2* have a high degree of sequence similarity, their mutations cause different NDDs. Mutations in *FOXP1* gene result in a complex, global NDD with behavioral disorders, brain malformations, specific facial features, and malformations of other organ systems (Co et al., 2020). This prompted clinicians to define a separate NDD, *FOXP1*-related intellectual disability syndrome (Meerschaut et al., 2017; Lozano et al., 2021). Conversely, *FOXP2* mutations lead to severe speech and language impairments, but these can be attributed to impaired brain connectivity, not to overt structural brain abnormalities (Lai et al., 2003; Co et al., 2020).

It is interesting to note that some of the genes linked to NDDs are also essential for the development of the STN (Table 2). When interpreting these findings, one has to be careful to acknowledge that neurobehavioral disorders have complex etiologies that cannot be limited to one gene. Similarly, mutations in these genes probably affect a wide repertoire of downstream targets, and their effect

depends on how they affect the final protein product (Parenti et al., 2020). If we examine clinical manifestations of several NDDs, some symptoms point to a dysfunction of cortical-basal ganglia circuits (Riva et al., 2018; Kuo and Liu, 2019; Vicente et al., 2020). In addition to locomotor control, the basal ganglia have important roles in non-motor functions like executive functions, procedural learning, habit formation, and goal-directed behavior (Graybiel, 2008; Leisman and Melillo, 2013; Haber, 2016). These functions were mostly attributed to frontostriatal connections, so striatal dysfunction is investigated in the pathophysiology of NDDs like ASD, ADHD, and schizophrenia (Leisman and Melillo, 2013; Kuo and Liu, 2019; Vicente et al., 2020). The STN can be perceived as another input nucleus of the cortical-basal ganglia circuits because it receives excitatory cortical input via the hyperdirect pathway (Nambu et al., 2002; Baunez and Lardeux, 2011; Tewari et al., 2016). The hyperdirect pathway has an important role in nonmotor functions of STN, like decision-making, attention, action control, and motivated behavior (Baunez and Lardeux, 2011; Weintraub and Zaghoul, 2013; Aron et al., 2016; Bonnevie and Zaghoul, 2019). Furthermore, the recently proposed hypothalamic origin of STN corroborates the complementary roles of hypothalamic and basal ganglia circuitry in motivated behavior. In this model, the STN serves as a “stop signal,” pausing initiated behavior (Barbier and Risold, 2021). Based on the discussed motor and nonmotor functions of the STN, especially its role in action inhibition, we argue that it probably plays an important, yet underexplored role in NDDs. For example, ASD, ADHD, Tourette’s syndrome, and schizophrenia are all characterized by restricted and repetitive patterns of behavior (RRBs) like stereotypies, perseveration, and tics, which are basically disorders of behavioral control (Lewis et al., 2018; Vicente et al., 2020; Tian et al., 2022). Additionally, RRBs could be just behavioral manifestations of a broader cognitive inflexibility



and an inability to stop unwanted actions or thoughts (Tian et al., 2022). However, clinical and preclinical neuroimaging studies have not studied intra-basal ganglia connectivity or possible abnormalities of small nuclei like STN in RRBs (for review, see Wilkes and Lewis, 2018), although animal models demonstrated clear involvement of STN in stereotyped behavior (Chang et al., 2016; Lewis et al., 2018; Wilkes and Lewis, 2018). Genes implicated in speech impairment (*FOXP1* and *FOXP2*) have widespread expression in the basal ganglia, STN included (Enard, 2011; Bacon and Rappold, 2012; Co et al., 2020; Bokulić et al., 2021). These expression patterns, coupled with the role of basal ganglia in language acquisition (Eigsti et al., 2011; Enard, 2011) and speech impairment being recognized as a side effect of DBS (Pützer et al., 2008; Silveri et al., 2012; Ehlen et al., 2014), point to a possible involvement of STN in speech production. Neuroimaging studies could give us valuable insight into the role of STN in speech production by exploring possible differences in STN connectivity and volumes in healthy control subjects and people with language impairments, whereas human postmortem studies could analyze the transcriptional profile of STN in healthy and language-impaired individuals.

In summary, a shared set of symptoms among NDDs might suggest a common cortical-basal ganglia-thalamo-cortical dysfunction. The exact role that the STN has in the pathophysiology of RRBs and impaired verbal fluency is still poorly understood, but we can hypothesize that the imbalance between the direct and indirect pathways and the loss of inhibitory control of STN are key components. Before exploring the functional roles of STN in NDDs, we should have an understanding of its cellular and molecular properties. The analysis of STN in NDDs could provide us with valuable information about the cellular composition of STN.

## Conclusion

In a quest to elucidate the developmental origin and molecular profile of STN neurons, a powerful tool at our disposal is genetically modified experimental animals. These models provided us abundant data about rodent STN. The analysis of gene expression patterns and lineage tracing experiments have proven the hypothalamic origin of STN. However, the origin and the transcriptional profile of the human STN remain to be further investigated, as there appear to be some interspecies differences. When analyzing the development of the human STN such tools are not available, and the majority of studies are descriptive studies using postmortem materials.

The literature search for studies of human STN revealed there are hardly any studies that analyzed the molecular phenotype or developmental origin of STN neurons. The majority of studies dealing with human STN analyzed expression patterns of calcium-binding proteins and neurotransmitter receptors in STN (Lévesque and Parent, 2005; Zwirner et al., 2017; Wu et al., 2018; Alkemade et al., 2019), with only one study also analyzing TF expression (Bokulić et al., 2021). However, all these studies analyzed the adult STN, so the data about TFs in the developing human STN is lacking. Future human postmortem studies

should focus on comparing the expression patterns of TFs in rodent and human developing STNs, thus giving us insight into possible species-specific differences in cellular composition or developmental origin. Moreover, thorough profiling of the neuronal populations of STN with TFs, calcium-binding proteins, and membrane receptors would allow modifications of existing models of cytoarchitectonic organization.

This comprehensive summary of TFs expressed in the STN sets the ground for future human postmortem studies. These studies should comparatively analyze the development and expression patterns of NDD-related genes in the STN between neurotypical and neurodivergent individuals. The results of these studies would enhance our understanding of the pathophysiology and symptomatology of NDDs.

## References

- Abdi A, Mallet N, Mohamed FY, Sharott A, Dodson PD, Nakamura KC, Suri S, Avery SV, Larvin JT, Garas FN, Garas SN, Vinciati F, Morin S, Bezard E, Baufreton J, Magill PJ (2015) Prototypic and arkypallidal neurons in the dopamine-intact external globus pallidus. *J Neurosci* 35:6667–6688.
- Afsharpour S (1985) Light microscopic analysis of Golgi-impregnated rat subthalamic neurons. *J Comp Neurol* 236:1–13.
- Alexander GE, Crutcher MD, DeLong MR (1990) Basal ganglia-thalamocortical circuits: parallel substrates for motor, oculomotor, “prefrontal” and “limbic” functions. *Prog Brain Res* 85:119–146.
- Alkemade A, Schnitzler A, Forstmann BU (2015) Topographic organization of the human and non-human primate subthalamic nucleus. *Brain Struct Funct* 220:3075–3086.
- Alkemade A, de Hollander G, Miletic S, Keuken MC, Balesar R, de Boer O, Swaab DF, Forstmann BU (2019) The functional microscopic neuroanatomy of the human subthalamic nucleus. *Brain Struct Funct* 224:3213–3227.
- Altman J, Bayer SA (1979a) Development of the diencephalon in the rat. IV. Quantitative study of the time of origin of neurons and the internuclear chronological gradients in the thalamus. *J Comp Neurol* 188:455–471.
- Altman J, Bayer SA (1979b) Development of the diencephalon in the rat. V. Thymidine-radiographic observations on internuclear and intranuclear gradients in the thalamus. *J Comp Neurol* 188:473–499.
- Alvarez-Bolado G (2019) Development of neuroendocrine neurons in the mammalian hypothalamus. *Cell Tissue Res* 375:23–39.
- Alvarez-Bolado G, Paul FA, Blaess S (2012) Sonic hedgehog lineage in the mouse hypothalamus: from progenitor domains to hypothalamic regions. *Neural Dev* 7:4.
- Anderson C, Stern CD (2016) Organizers in Development. *Curr Top Dev Biol* 117:435–454.
- Ang SL, Wierda A, Wong D, Stevens KA, Cascio S, Rossant J, Zaret KS (1993) The formation and maintenance of the definitive endoderm lineage in the mouse: involvement of HNF3/forkhead proteins. *Development* 119:1301–1315.
- Aron AR, Herz DM, Brown P, Forstmann BU, Zaghoul K (2016) Frontosubthalamic circuits for control of action and cognition. *J Neurosci* 36:11489–11495.
- Asbreuk CHJ, Vogelaar CF, Hellemons A, Smidt MP, Burbach JPH (2002) CNS expression pattern of Lmx1b and coexpression with ptx genes suggest functional cooperativity in the development of forebrain motor control systems. *Mol Cell Neurosci* 21:410–420.
- Bacon C, Rappold GA (2012) The distinct and overlapping phenotypic spectra of FOXP1 and FOXP2 in cognitive disorders. *Hum Genet* 131:1687–1698.

- Barbier M, Risold P-Y (2021) Understanding the significance of the hypothalamic nature of the subthalamic nucleus. *eNeuro* 8: ENEURO.0116-21.2021.
- Barembaum M, Bronner-Fraser M (2005) Early steps in neural crest specification. *Semin Cell Dev Biol* 16:642–646.
- Basch ML, Bronner-Fraser M (2006) Neural crest inducing signals. *Adv Exp Med Biol* 589:24–31.
- Baunez C, Lardeux S (2011) Frontal cortex-like functions of the subthalamic nucleus. *Front Syst Neurosci* 5:83.
- Beccari L, Marco-Ferreres R, Bovolenta P (2013) The logic of gene regulatory networks in early vertebrate forebrain patterning. *Mech Dev* 130:95–111.
- Bedont JL, Newman EA, Blackshaw S (2015) Patterning, specification, and differentiation in the developing hypothalamus. *Wiley Interdiscip Rev Dev Biol* 4:445–468.
- Benabid AL, Chabardes S, Mitrofanis J, Pollak P (2009) Deep brain stimulation of the subthalamic nucleus for the treatment of Parkinson's disease. *Lancet Neurol* 8:67–81.
- Bergman O, Westberg L, Nilsson L-G, Adolfsson R, Eriksson E (2010) Preliminary evidence that polymorphisms in dopamine-related transcription factors LMX1A, LMX1B and PITX3 are associated with schizophrenia. *Prog Neuropsychopharmacol Biol Psychiatry* 34:1094–1097.
- Bergquist H, Källén B (1954) Notes on the early histogenesis and morphogenesis of the central nervous system in vertebrates. *J Comp Neurol* 100:627–659.
- Bergquist H, Källén B (1955) The archencephalic neuromery in *Ambystoma punctatum*; an experimental study. *Acta Anat (Basel)* 24:208–214.
- Betcheva ET, Yosifova AG, Mushiroda T, Kubo M, Takahashi A, Karachanak SK, Zaharieva IT, Hadjidekova SP, Dimova II, Vazharova RV, Stoyanov DS, Milanova VK, Tolev T, Kirov G, Kamatani N, Toncheva DI, Nakamura Y (2013) Whole-genome-wide association study in the Bulgarian population reveals HHAT as schizophrenia susceptibility gene. *Psychiatr Genet* 23:11–19.
- Bevan MD, Atherton JF, Baufreton J (2006) Cellular principles underlying normal and pathological activity in the subthalamic nucleus. *Curr Opin Neurobiol* 16:621–628.
- Blackshaw S, Scholpp S, Placzek M, Ingraham H, Simerly R, Shimogori T (2010) Molecular pathways controlling development of thalamus and hypothalamus: from neural specification to circuit formation. *J Neurosci* 30:14925–14930.
- Blaess S, Bodea GO, Kabanova A, Chanet S, Mugniery E, Derouiche A, Stephen D, Joyner AL (2011) Temporal-spatial changes in Sonic Hedgehog expression and signaling reveal different potentials of ventral mesencephalic progenitors to populate distinct ventral midbrain nuclei. *Neural Dev* 6:29.
- Blaess S, Szabó N, Haddad-Tóvölli R, Zhou X, Álvarez-Bolado G (2014) Sonic hedgehog signaling in the development of the mouse hypothalamus. *Front Neuroanat* 8:156.
- Bokulić E, Medenica T, Knezović V, Štajduhar A, Almahariq F, Baković M, Judaš M, Sedmak G (2021) The stereological analysis and spatial distribution of neurons in the human subthalamic nucleus. *Front Neuroanat* 15:749390.
- Bonnevie T, Zaghloul KA (2019) The subthalamic nucleus: unravelling new roles and mechanisms in the control of action. *Neuroscientist* 25:48–64.
- Boyd PJ, Cunliffe VT, Roy S, Wood JD (2015) Sonic hedgehog functions upstream of disrupted-in-schizophrenia 1 (disc1): implications for mental illness. *Biol Open* 4:1336–1343.
- Braden RO, Amor DJ, Fisher SE, Mei C, Myers CT, Mefford H, Gill D, Srivastava S, Swanson LC, Goel H, Scheffer IE, Morgan AT (2021) Severe speech impairment is a distinguishing feature of FOXP1-related disorder. *Dev Med Child Neurol* 63:1417–1426.
- Bronner-Fraser M, Fraser SE (1997) Differentiation of the vertebrate neural tube. *Curr Opin Cell Biol* 9:885–891.
- Brooks LR, Chung WCJ, Tsai P-S (2010) Abnormal hypothalamic oxytocin system in fibroblast growth factor 8-deficient mice. *Endocrine* 38:174–180.
- Bulfone A, Menguzzato E, Broccoli V, Marchitelli A, Gattuso C, Mariani M, Consalez GG, Martinez S, Ballabio A, Banfi S (2000) *Barhl1*, a gene belonging to a new subfamily of mammalian homeobox genes, is expressed in migrating neurons of the CNS. *Hum Mol Genet* 9:1443–1452.
- Burbridge S, Stewart I, Placzek M (2016) Development of the neuroendocrine hypothalamus. *Compr Physiol* 6:623–643.
- Cajal M, Creuzet SE, Papanayotou C, Sabéran-Djoneidi D, Chuva de Sousa Lopes SM, Zwijsen AN, Collignon J, Camus A (2014) A conserved role for non-neural ectoderm cells in early neural development. *Development* 141:4127–4138.
- Causeret F, Ensini M, Teissier A, Kessaris N, Richardson WD, Lucas de Couville T, Pierani A (2011) *Dbx1*-expressing cells are necessary for the survival of the mammalian anterior neural and craniofacial structures. *PLoS One* 6:e19367.
- Chandebois R, Faber J (1983) Automation in animal development. A new theory derived from the concept of cell sociology. *Monogr Dev Biol* 16:1–202.
- Chang AD, Berges VA, Chung SJ, Fridman GY, Baraban JM, Reti IM (2016) High-frequency stimulation at the subthalamic nucleus suppresses excessive self-grooming in autism-like mouse models. *Neuropsychopharmacology* 41:1813–1821.
- Chiang C, Litingtung Y, Lee E, Young KE, Corden JL, Westphal H, Beachy PA (1996) Cyclopia and defective axial patterning in mice lacking Sonic hedgehog gene function. *Nature* 383:407–413.
- Clarke RA, Lee S, Eapen V (2012) Pathogenetic model for Tourette syndrome delineates overlap with related neurodevelopmental disorders including Autism. *Transl Psychiatry* 2:e158.
- Co M, Anderson AG, Konopka G (2020) FOXP transcription factors in vertebrate brain development, function, and disorders. *Wiley Interdiscip Rev Dev Biol* 9:e375.
- Cooke J (1995) Morphogens in vertebrate development: how do they work? *Bioessays* 17:93–96.
- Cristino AS, Williams SM, Hawi Z, An J-Y, Bellgrove MA, Schwartz CE, Da Costa LF, Claudianos C (2014) Neurodevelopmental and neuropsychiatric disorders represent an interconnected molecular system. *Mol Psychiatry* 19:294–301.
- Dai J-X, Hu Z-L, Shi M, Guo C, Ding Y-Q (2008) Postnatal ontogeny of the transcription factor *Lmx1b* in the mouse central nervous system. *J Comp Neurol* 509:341–355.
- Deng Q, Andersson E, Hedlund E, Alekseenko Z, Coppola E, Panman L, Millonig JH, Brunet J-F, Ericson J, Perlmann T (2011) Specific and integrated roles of *Lmx1a*, *Lmx1b* and *Phox2a* in ventral midbrain development. *Development* 138:3399–3408.
- Diaz C, Puelles L (2020) Developmental genes and malformations in the hypothalamus. *Front Neuroanat* 14:607111.
- Diaz C, Morales-Delgado N, Puelles L (2014) Ontogenesis of peptidergic neurons within the genoarchitectonic map of the mouse hypothalamus. *Front Neuroanat* 8:162.
- Dodd J, Jessell TM, Placzek M (1998) The when and where of floor plate induction. *Science* 282:1654–1657.
- Dodson PD, Larvin JT, Duffell JM, Garas FN, Doig NM, Kessaris N, Duguid IC, Bogacz R, Butt SJB, Magill PJ (2015) Distinct developmental origins manifest in the specialized encoding of movement by adult neurons of the external globus pallidus. *Neuron* 86:501–513.
- Doucet-Beaupré H, Ang S-L, Lévesque M (2015) Cell fate determination, neuronal maintenance and disease state: the emerging role of transcription factors *Lmx1a* and *Lmx1b*. *FEBS Lett* 589:3727–3738.
- Dubourg C, Bendavid C, Pasquier L, Henry C, Odent S, David V (2007) Holoprosencephaly. *Orphanet J Rare Dis* 2:8.
- Dubourg C, Carré W, Hamdi-Rozé H, Mouden C, Roume J, Abdelmajid B, Amram D, Baumann C, Chassaing N, Coubes C, Faivre-Olivier L, Ginglinger E, Gonzales M, Levy-Mozziconacci A, Lynch S-A, Naudion S, Pasquier L, Poidvin A, Prieur F, Sarda P, et al (2016) Mutational spectrum in holoprosencephaly shows that FGF is a new major signaling pathway. *Hum Mutat* 37:1329–1339.

- Ehlen F, Schoenecker T, Kühn AA, Klostermann F (2014) Differential effects of deep brain stimulation on verbal fluency. *Brain Lang* 134:23–33.
- Eigsti I-M, de Marchena AB, Schuh JM, Kelley E (2011) Language acquisition in autism spectrum disorders: a developmental review. *Res Autism Spectr Disord* 5:681–691.
- Emmi A, Antonini A, Macchi V, Porzionato A, de Caro R (2020) Anatomy and connectivity of the subthalamic nucleus in humans and non-human primates. *Front Neuroanat* 14:13.
- Enard W (2011) FOXP2 and the role of cortico-basal ganglia circuits in speech and language evolution. *Curr Opin Neurobiol* 21:415–424.
- Enard W, Przeworski M, Fisher SE, Lai CSL, Wiebe V, Kitano T, Monaco AP, Pääbo S (2002) Molecular evolution of FOXP2, a gene involved in speech and language. *Nature* 418:869–872.
- Failli V, Bachy I, Rétaux S (2002) Expression of the LIM-homeodomain gene *Lmx1a* (*dreher*) during development of the mouse nervous system. *Mech Dev* 118:225–228.
- Ferland RJ, Cherry TJ, Preware PO, Morrissey EE, Walsh CA (2003) Characterization of *Foxp2* and *Foxp1* mRNA and protein in the developing and mature brain. *J Comp Neurol* 460:266–279.
- Ferran JL, Puelles L, Rubenstein JLR (2015) Molecular codes defining rostrocaudal domains in the embryonic mouse hypothalamus. *Front Neuroanat* 9:46.
- Ferri ALM, Lin W, Mavromatakis YE, Wang JC, Sasaki H, Whitsett JA, Ang S-L (2007) *Foxa1* and *Foxa2* regulate multiple phases of midbrain dopaminergic neuron development in a dosage-dependent manner. *Development* 134:2761–2769.
- Figdor MC, Stern CD (1993) Segmental organization of embryonic diencephalon. *Nature* 363:630–634.
- Flames N, Pla R, Gelman DM, Rubenstein JLR, Puelles L, Marín O (2007) Delineation of multiple subpallial progenitor domains by the combinatorial expression of transcriptional codes. *J Neurosci* 27:9682–9695.
- Flandin P, Kimura S, Rubenstein JLR (2010) The progenitor zone of the ventral medial ganglionic eminence requires *Nkx2-1* to generate most of the globus pallidus but few neocortical interneurons. *J Neurosci* 30:2812–2823.
- Fong WL, Kuo H-Y, Wu H-L, Chen S-Y, Liu F-C (2018) Differential and overlapping pattern of *Foxp1* and *Foxp2* expression in the striatum of adult mouse brain. *Neuroscience* 388:214–223.
- Friedman JR, Kaestner KH (2006) The *Foxa* family of transcription factors in development and metabolism. *Cell Mol Life Sci* 63:2317–2328.
- Fu T, Towers M, Placzek MA (2017) *Fgf10*<sup>+</sup> progenitors give rise to the chick hypothalamus by rostral and caudal growth and differentiation. *Development* 144:3278–3288.
- Fu T, Pearson C, Towers M, Placzek M (2019) Development of the basal hypothalamus through anisotropic growth. *J Neuroendocrinol* 31:e12727.
- García-Calero E, Fernández-Garre P, Martínez S, Puelles L (2008) Early mammillary pouch specification in the course of prechordal ventralization of the forebrain tegmentum. *Dev Biol* 320:366–377.
- García-Lopez R, Vieira C, Echevarria D, Martínez S (2004) Fate map of the diencephalon and the zona limitans at the 10-somites stage in chick embryos. *Dev Biol* 268:514–530.
- Garda A, Puelles L, Rubenstein J, Medina L (2002) Expression patterns of *Wnt8b* and *Wnt7b* in the chicken embryonic brain suggest a correlation with forebrain patterning centers and morphogenesis. *Neuroscience* 113:689–698.
- Garel S, Huffman KJ, Rubenstein JLR (2003) Molecular regionalization of the neocortex is disrupted in *Fgf8* hypomorphic mutants. *Development* 130:1903–1914.
- Gass G, Hall BK (2007) Collectivity in context: modularity, cell sociology, and the neural crest. *Biol Theory* 2:349–359.
- Gasser E, Johannsen HC, Rülcke T, Zeilhofer HU, Stoffel M (2016) *Foxa1* is essential for development and functional integrity of the subthalamic nucleus. *Sci Rep* 6:38611.
- Gilbert MS (1935) The early development of the human diencephalon. *J Comp Neurol* 62:81–115.
- Gras D, et al. (2012) Benign hereditary chorea: phenotype, prognosis, therapeutic outcome and long term follow-up in a large series with new mutations in the *TITF1/NKX2-1* gene. *J Neurol Neurosurg Psychiatry* 83:956–962.
- Graybiel AM (2008) Habits, rituals, and the evaluative brain. *Annu Rev Neurosci* 31:359–387.
- Gribnau AAM, Geijsberts LGM (1985) Morphogenesis of the brain in staged Rhesus monkey embryos. *Adv Anat Embryol Cell Biol* 91:1–69.
- Gurdon JB, Bourillot PY (2001) Morphogen gradient interpretation. *Nature* 413:797–803.
- Guo Q, Li JYH (2019) Defining developmental diversification of diencephalon neurons through single cell gene expression profiling. *Development* 146:dev174284.
- Haber SN (2016) Corticostriatal circuitry. *Dialogues Clin Neurosci* 18:7–21.
- Hamani C, Saint-Cyr JA, Fraser J, Kaplitt M, Lozano AM (2004) The subthalamic nucleus in the context of movement disorders. *Brain* 127:4–20.
- Hamani C, Richter E, Schwab JM, Lozano AM (2005) Bilateral subthalamic nucleus stimulation for Parkinson's disease: a systematic review of the clinical literature. *Neurosurgery* 56:1313–1321.
- Hardman CD, Henderson JM, Finkelstein DI, Horne MK, Paxinos G, Halliday GM (2002) Comparison of the basal ganglia in rats, marmosets, macaques, baboons, and humans: volume and neuronal number for the output, internal relay, and striatal modulating nuclei. *J Comp Neurol* 445:238–255.
- Haynes WIA, Haber SN (2013) The organization of prefrontal-subthalamic inputs in primates provides an anatomical substrate for both functional specificity and integration: implications for basal ganglia models and deep brain stimulation. *J Neurosci* 33:4804–4814.
- Herrick CJ (1910) The morphology of the forebrain in amphibia and reptilia. *J Comp Neurol Psychol* 20:413–547.
- Heussler HS, Suri M, Young ID, Muenke M (2002) Extreme variability of expression of a *Sonic Hedgehog* mutation: attention difficulties and holoprosencephaly. *Arch Dis Child* 86:293–296.
- His W (1893a) Vorschläge zur Eintheilung des Gehirns. *Arch Anat Entwicklunsges* 3:172–179.
- His W (1893b) Über das frontale Ende des Gehirnrohrs. *Arch Anat Entwicklunsges* 3:157–171.
- Hoekstra EJ, von Oerthel L, van der Heide LP, Kouwenhoven WM, Veenvliet JV, Wever I, Jin Y-R, Yoon JK, van der Linden AJA, Holstege FCP, Groot Koerkamp MJ, Smidt MP (2013) *Lmx1a* encodes a rostral set of mesodiencephalic dopaminergic neurons marked by the *Wnt/B-catenin* signaling activator *R-spondin 2*. *PLoS One* 8:e74049.
- Hynes M, Rosenthal A (1999) Specification of dopaminergic and serotonergic neurons in the vertebrate CNS. *Curr Opin Neurobiol* 9:26–36.
- Iwahori N (1978) A Golgi study on the subthalamic nucleus of the cat. *J Comp Neurol* 182:383–397.
- Jahanshahi M, Ardouin CM, Brown RG, Rothwell JC, Obeso J, Albanese A, Rodriguez-Oroz MC, Moro E, Benabid AL, Pollak P, Limousin-Dowsey P (2000) The impact of deep brain stimulation on executive function in Parkinson's disease. *Brain* 123:1142–1154.
- Joel D, Weiner I (1997) The connections of the primate subthalamic nucleus: indirect pathways and the open-interconnected scheme of basal ganglia-thalamocortical circuitry. *Brain Res Brain Res Rev* 23:62–78.
- Joksimovic M, Andereg A, Roy A, Campochiaro L, Yun B, Kittappa R, McKay R, Awatramani R (2009) Spatiotemporally separable *Shh* domains in the midbrain define distinct dopaminergic progenitor pools. *Proc Natl Acad Sci U S A* 106:19185–19190.
- Kaestner KH (2010) The *FoxA* factors in organogenesis and differentiation. *Curr Opin Genet Dev* 20:527–532.
- Kee N, Volakakis N, Kirkeby A, Dahl L, Storvall H, Nolbrant S, Lahti L, Björklund ÅK, Gillberg L, Joodmardi E, Sandberg R, Parmar M, Perlmann T (2017) Single-cell analysis reveals a close relationship

- between differentiating dopamine and subthalamic nucleus neuronal lineages. *Cell Stem Cell* 20:29–40.
- Keyser A (1973) The development of the diencephalon in the Chinese hamster: an investigation into the validity of the criteria of subdivision of the brain. *Acta Anat (Basel)* 86:42–43.
- Kiecker C, Lumsden A (2004) Hedgehog signaling from the ZLI regulates diencephalic regional identity. *Nat Neurosci* 7:1242–1249.
- Kiecker C, Lumsden A (2012) The role of organizers in patterning the nervous system. *Annu Rev Neurosci* 35:347–367.
- Kita H, Chang HT, Kitai ST (1983) The morphology of intracellularly labeled rat subthalamic neurons: a light microscopic analysis. *J Comp Neurol* 215:245–257.
- Kim DW, Washington PW, Wang ZQ, Lin SH, Sun C, Ismail BT, Wang H, Jiang L, Blackshaw S (2020) The cellular and molecular landscape of hypothalamic patterning and differentiation from embryonic to late postnatal development. *Nat Commun* 11:4360.
- Kimura S, Hara Y, Pineau T, Fernandez-Salguero P, Fox CH, Ward JM, Gonzalez FJ (1996) The T/ebp null mouse: thyroid-specific enhancer-binding protein is essential for the organogenesis of the thyroid, lung, ventral forebrain, and pituitary. *Genes Dev* 10:60–69.
- Kohtz JD, Baker DP, Corte G, Fishell G (1998) Regionalization within the mammalian telencephalon is mediated by changes in responsiveness to Sonic Hedgehog. *Development* 125:5079–5089.
- Kuhlenbeck H (1954) The human diencephalon; a summary of development, structure, function, and pathology. *Confin Neurol* 14:1–230.
- Kumar R, Lozano AM, Kim YJ, Hutchison WD, Sime E, Hallett E, Lang AE (1998) Double-blind evaluation of subthalamic nucleus deep brain stimulation in advanced Parkinson's disease. *Neurology* 51:850–855.
- Kumar S, Reynolds K, Ji Y, Gu R, Rai S, Zhou CJ (2019) Impaired neurodevelopmental pathways in autism spectrum disorder: a review of signaling mechanisms and crosstalk. *J Neurodev Disord* 11:10.
- Kuo H-Y, Liu F-C (2019) Synaptic wiring of corticostriatal circuits in basal ganglia: insights into the pathogenesis of neuropsychiatric disorders. *eNeuro* 6:ENEURO.0076-19.2019.
- Lai CSL, Gerrelli D, Monaco AP, Fisher SE, Copp AJ (2003) FOXP2 expression during brain development coincides with adult sites of pathology in a severe speech and language disorder. *Brain* 126:2455–2462.
- Lako M, Lindsay S, Bullen P, Wilson DI, Robson SC, Strachan T (1998) A novel mammalian wnt gene, WNT8B, shows brain-restricted expression in early development, with sharply delimited expression boundaries in the developing forebrain. *Hum Mol Genet* 7:813–822.
- Lamba P, Hjalt TA, Bernard DJ (2008) Novel forms of Paired-like homeodomain transcription factor 2 (PITX2): generation by alternative translation initiation and mRNA splicing. *BMC Mol Biol* 9:31.
- Lambert C, Zrinzo L, Nagy Z, Lutti A, Hariz M, Foltynie T, Draganski B, Ashburner J, Frackowiak R (2012) Confirmation of functional zones within the human subthalamic nucleus: patterns of connectivity and sub-parcellation using diffusion weighted imaging. *Neuroimage* 60:83–94.
- Larsen M, Bjarkam CR, Østergaard K, West MJ, Sørensen JC (2004) The anatomy of the porcine subthalamic nucleus evaluated with immunohistochemistry and design-based stereology. *Anat Embryol (Berl)* 208:239–247.
- Lawrence PA, Struhl G (1996) Morphogens, compartments, and pattern: lessons from *Drosophila*? *Cell* 85:951–961.
- Le Douarin NM, Halpern ME (2000) Discussion point: origin and specification of the neural tube floor plate: insights from the chick and zebrafish. *Curr Opin Neurobiol* 10:23–30.
- Lee JE, Wu S-F, Goering LM, Dorsky RI (2006) Canonical Wnt signaling through Lef1 is required for hypothalamic neurogenesis. *Development* 133:4451–4461.
- Leisman G, Melillo R (2013) The basal ganglia: motor and cognitive relationships in a clinical neurobehavioral context. *Rev Neurosci* 24:9–25.
- Lévesque J-C, Parent A (2005) GABAergic interneurons in human subthalamic nucleus. *Mov Disord* 20:574–584.
- Lewis MH, Lindenmaier Z, Boswell K, Edington G, King MA, Muehlmann AM (2018) Subthalamic nucleus pathology contributes to repetitive behavior expression and is reversed by environmental enrichment. *Genes Brain Behav* 17:e12468.
- Lin W, Metzakopian E, Mavromatakis YE, Gao N, Balaskas N, Sasaki H, Briscoe J, Whitsett JA, Goulding M, Kaestner KH, Ang S-L (2009) Foxa1 and Foxa2 function both upstream of and cooperatively with Lmx1a and Lmx1b in a feedforward loop promoting mesodiencephalic dopaminergic neuron development. *Dev Biol* 333:386–396.
- Lopes C, Delezoide A-L, Delabar J-M, Rachidi M (2006) BARHL1 homeogene, the human ortholog of the mouse Barhl1 involved in cerebellum development, shows regional and cellular specificities in restricted domains of developing human central nervous system. *Biochem Biophys Res Commun* 339:296–304.
- López-González L, Alonso A, García-Calero E, de Puelles E, Puelles L (2021) Tangential intrahypothalamic migration of the mouse ventral premamillary nucleus and Fgf8 signaling. *Front Cell Dev Biol* 9:676121.
- Lozano R, Gbokie C, Siper PM, Srivastava S, Saland JM, Sethuram S, Tang L, Drapeau E, Frank Y, Buxbaum JD, Kolevzon A (2021) FOXP1 syndrome: a review of the literature and practice parameters for medical assessment and monitoring. *J Neurodev Disord* 13:18.
- Lu S, Bogarad LD, Murtha MT, Ruddle FH (1992) Expression pattern of a murine homeobox gene, Dbx, displays extreme spatial restriction in embryonic forebrain and spinal cord. *Proc Natl Acad Sci U S A* 89:8053–8057.
- Mai JK, Assheuer J, Paxinos G (2004) Atlas of the human brain. Amsterdam, London: Elsevier Academic.
- Magno L, Catanzariti V, Nitsch R, Krude H, Naumann T (2009) Ongoing expression of Nkx2.1 in the postnatal mouse forebrain: potential for understanding NKX2.1 haploinsufficiency in humans? *Brain Res* 1304:164–186.
- Mallet L, Schüpbach M, N'Diaye K, Remy P, Bardin E, Czernecki V, Welter M-L, Pelissolo A, Ruberg M, Agid Y, Yelnik J (2007) Stimulation of subterritories of the subthalamic nucleus reveals its role in the integration of the emotional and motor aspects of behavior. *Proc Natl Acad Sci U S A* 104:10661–10666.
- Malt EA, Juhasz K, Malt UF, Naumann T (2016) A role for the transcription factor Nk2 homeobox 1 in schizophrenia: convergent evidence from animal and human studies. *Front Behav Neurosci* 10:59.
- Manzanares M, Trainor PA, Ariza-McNaughton L, Nonchev S, Krumlauf R (2000) Dorsal patterning defects in the hindbrain, roof plate and skeleton in the dreher (drJ) mouse mutant. *Mech Dev* 94:147–156.
- Marani E, Heida T, Lakke EAJF, Usunoff KG (2008) The subthalamic nucleus. Part I: development, cytology, topography and connections. *Adv Anat Embryol Cell Biol* 198:1–113.
- Marchand R (1987) Histogenesis of the subthalamic nucleus. *Neuroscience* 21:183–195.
- Marín O, Anderson SA, Rubenstein JL (2000) Origin and molecular specification of striatal interneurons. *J Neurosci* 20:6063–6076.
- Martin DM, Skidmore JM, Fox SE, Gage PJ, Camper SA (2002) Pitx2 distinguishes subtypes of terminally differentiated neurons in the developing mouse neuroepithelium. *Dev Biol* 252:84–99.
- Martin DM, Skidmore JM, Phillips ST, Vieira C, Gage PJ, Condie BG, Raphael Y, Martinez S, Camper SA (2004) PITX2 is required for normal development of neurons in the mouse subthalamic nucleus and midbrain. *Dev Biol* 267:93–108.
- Martinez-Ferre A, Martinez S (2012) Molecular regionalization of the diencephalon. *Front Neurosci* 6:73.
- Martinez-Lopez JE, Moreno-Bravo JA, Madrigal MP, Martinez S, Puelles E (2015) Mesencephalic basolateral domain specification is dependent on Sonic Hedgehog. *Front Neuroanat* 9:12.
- Mavromatakis YE, Lin W, Metzakopian E, Ferri ALM, Yan CH, Sasaki H, Whitsett J, Ang S-L (2011) Foxa1 and Foxa2 positively and

- negatively regulate Shh signalling to specify ventral midbrain progenitor identity. *Mech Dev* 128:90–103.
- McCabe MJ, Gaston-Massuet C, Tziaferi V, Gregory LC, Alatzoglou KS, Signore M, Puelles E, Gerrelli D, Farooqi IS, Raza J, Walker J, Kavanaugh SI, Tsai P-S, Pitteloud N, Martinez-Barbera J-P, Dattani MT (2011) Novel FGF8 mutations associated with recessive holoprosencephaly, craniofacial defects, and hypothalamo-pituitary dysfunction. *J Clin Endocrinol Metab* 96:E1709–E1718.
- Meerschaut I, et al. (2017) FOXP1-related intellectual disability syndrome: a recognisable entity. *J Med Genet* 54:613–623.
- Memi F, Zecevic N, Radonjić N (2018) Multiple roles of Sonic Hedgehog in the developing human cortex are suggested by its widespread distribution. *Brain Struct Funct* 223:2361–2375.
- Mickelsen LE, Bolisetty M, Chimileski BR, Fujita A, Beltrami EJ, Costanzo JT, Naparstek JR, Robson P, Jackson AC (2019) Single-cell transcriptomic analysis of the lateral hypothalamic area reveals molecularly distinct populations of inhibitory and excitatory neurons. *Nat Neurosci* 22:642–656.
- Mickelsen LE, Flynn WF, Springer K, Wilson L, Beltrami EJ, Bolisetty M, Robson P, Jackson AC (2020) Cellular taxonomy and spatial organization of the murine ventral posterior hypothalamus. *Elife* 9:e58901.
- Millonig JH, Millen KJ, Hatten ME (2000) The mouse Dreher gene *Lmx1a* controls formation of the roof plate in the vertebrate CNS. *Nature* 403:764–769.
- Milone R, Masson R, Di Cosmo C, Tonacchera M, Bertini V, Guzzetta A, Battini R (2019) A not so benign family pedigree with hereditary chorea: a broader phenotypic expression or additional picture? *Child Neurol Open* 6:2329048X19828881.
- Mitchell KJ (2011) The genetics of neurodevelopmental disease. *Curr Opin Neurobiol* 21:197–203.
- Mitchell KJ (2015) The genetics of neurodevelopmental disorders. Hoboken, NJ: Wiley Blackwell.
- Moffitt JR, Bambach-Mukku D, Eichhorn SW, Vaughn E, Shekhar K, Perez JD, Rubinstein ND, Hao J, Regev A, Dulac C, Zhuang X (2018) Molecular, spatial, and functional single-cell profiling of the hypothalamic preoptic region. *Science* 362:eaau5324.
- Molnár Z, Clowry GJ, Sestan N, Alzu'bi A, Bakken T, Hevner RF, Hüppi PS, Kostović I, Rakic P, Anton ES, Edwards D, Garcez P, Hoerder-Suabedissen A, Kriegstein A (2019) New insights into the development of the human cerebral cortex. *J Anat* 235:432–451.
- Molyneaux BJ, Arlotta P, Menezes JRL, Macklis JD (2007) Neuronal subtype specification in the cerebral cortex. *Nat Rev Neurosci* 8:427–437.
- Muccielli ML, Martinez S, Pattyn A, Goridis C, Brunet JF (1996) *Otx2*, an *Otx*-related homeobox gene expressed in the pituitary gland and in a restricted pattern in the forebrain. *Mol Cell Neurosci* 8:258–271.
- Müller F, O'Rahilly R (1988) The development of the human brain, including the longitudinal zoning in the diencephalon at stage 15. *Anat Embryol (Berl)* 179:55–71.
- Müller F, O'Rahilly R (1990) The human brain at stages 18–20, including the choroid plexuses and the amygdaloid and septal nuclei. *Anat Embryol (Berl)* 182:285–306.
- Murcia-Ramón R, Company V, Juárez-Leal I, Andreu-Cervera A, Almagro-García F, Martínez S, Echevarría D, Puelles E (2020) Neuronal tangential migration from *Nkx2.1*-positive hypothalamus. *Brain Struct Funct* 225:2857–2869.
- Nakamura K, Kimura S, Yamazaki M, Kawaguchi A, Inoue K, Sakai T (2001) Immunohistochemical analyses of thyroid-specific enhancer-binding protein in the fetal and adult rat hypothalamus and pituitary glands. *Brain Res Dev Brain Res* 130:159–166.
- Nambu A, Tokuno H, Takada M (2002) Functional significance of the cortico-subthalamo-pallidal “hyperdirect” pathway. *Neurosci Res* 43:111–117.
- Newman EA, Wu D, Taketo MM, Zhang J, Blackshaw S (2018) Canonical Wnt signaling regulates patterning, differentiation and nucleogenesis in mouse hypothalamus and prethalamus. *Dev Biol* 442:236–248.
- Nieuwenhuys R (2017) Principles of current vertebrate neuromorphology. *Brain Behav Evol* 90:117–130.
- Nóbrega-Pereira S, Kessar N, Du T, Kimura S, Anderson SA, Marín O (2008) Postmitotic *Nkx2-1* controls the migration of telencephalic interneurons by direct repression of guidance receptors. *Neuron* 59:733–745.
- Nóbrega-Pereira S, Gelman D, Bartolini G, Pla R, Pierani A, Marín O (2010) Origin and molecular specification of globus pallidus neurons. *J Neurosci* 30:2824–2834.
- Nouri N, Awatramani R (2017) A novel floor plate boundary defined by adjacent *En1* and *Dbx1* microdomains distinguishes midbrain dopamine and hypothalamic neurons. *Development* 144:916–927.
- Orr H (1887) Contribution to the embryology of the lizard; With especial reference to the central nervous system and some organs of the head; together with observations on the origin of the vertebrates. *J Morphol* 1:311–372.
- Pagès F, Kerridge S (2000) Morphogen gradients. *Trends Genet* 16:40–44.
- Parent A, Hazrati L-N (1995) Functional anatomy of the basal ganglia. II. The place of subthalamic nucleus and external pallidum in basal ganglia circuitry. *Brain Res Reviews* 20:128–154.
- Parenti I, Rabaneda LG, Schoen H, Novarino G (2020) Neurodevelopmental disorders: from genetics to functional pathways. *Trends Neurosci* 43:608–621.
- Parolari L, Schneeberger M, Heintz N, Friedman JM (2021) Functional analysis of distinct populations of subthalamic nucleus neurons on Parkinson's disease and OCD-like behaviors in mice. *Mol Psychiatry* 26:7029–7046.
- Patel SS, Tomar S, Sharma D, Mahindroo N, Udayabanu M (2017) Targeting sonic hedgehog signaling in neurological disorders. *Neurosci Biobehav Rev* 74:76–97.
- Pauly M-C, Döbrössy MD, Nikkha G, Winkler C, Piroth T (2013) Organization of the human fetal subpallium. *Front Neuroanat* 7:54.
- Pelloux Y, Baunez C (2013) Deep brain stimulation for addiction: why the subthalamic nucleus should be favored. *Curr Opin Neurobiol* 23:713–720.
- Philips ST, Albin RL, Martin DM (2005) Genetics of subthalamic nucleus in development and disease. *Exp Neurol* 192:320–330.
- Placzek M, Dodd J, Jessell TM (2000) Discussion point: the case for floor plate induction by the notochord. *Curr Opin Neurobiol* 10:15–22.
- Popovitchenko T, Rasin M-R (2017) Transcriptional and post-transcriptional mechanisms of the development of neocortical lamination. *Front Neuroanat* 11:102.
- Postuma RB, Lang AE (2003) Hemiballism: revisiting a classic disorder. *Lancet Neurol* 2:661–668.
- Pristerà A, Lin W, Kaufmann A-K, Brimblecombe KR, Threlfell S, Dodson PD, Magill PJ, Fernandes C, Cragg SJ, Ang S-L (2015) Transcription factors *FOXA1* and *FOXA2* maintain dopaminergic neuronal properties and control feeding behavior in adult mice. *Proc Natl Acad Sci U S A* 112:E4929–E4938.
- Puelles L (2019) Survey of midbrain, diencephalon, and hypothalamus neuroanatomic terms whose prosomeric definition conflicts with columnar tradition. *Front Neuroanat* 13:20.
- Puelles L (2021) Recollections on the origins and development of the prosomeric model. *Front Neuroanat* 15:787913.
- Puelles L, Rubenstein JL (2003) Forebrain gene expression domains and the evolving prosomeric model. *Trends Neurosci* 26:469–476.
- Puelles L, Rubenstein JLR (2015) A new scenario of hypothalamic organization: rationale of new hypotheses introduced in the updated prosomeric model. *Front Neuroanat* 9:27.
- Puelles L, Martinez-de-la-Torre M, Bardet S, Rubenstein J (2012) Hypothalamus. In: *The mouse nervous system* (Watson C, Paxinos G, Puelles L, eds), pp 221–312. San Diego: Academic.
- Puelles L, Harrison M, Paxinos G, Watson C (2013) A developmental ontology for the mammalian brain based on the prosomeric model. *Trends Neurosci* 36:570–578.
- Pützer M, Barry WJ, Moringlane JR (2008) Effect of bilateral stimulation of the subthalamic nucleus on different speech subsystems in patients with Parkinson's disease. *Clin Linguist Phon* 22:957–973.

- Rachidi M, Lopes C (2006) Differential transcription of Barhl1 homeobox gene in restricted functional domains of the central nervous system suggests a role in brain patterning. *Int J Dev Neurosci* 24:35–44.
- Rafols JA, Fox CA (1976) The neurons in the primate subthalamic nucleus: a Golgi and electron microscopic study. *J Comp Neurol* 168:75–111.
- Reig G, Cabrejos ME, Concha ML (2007) Functions of BarH transcription factors during embryonic development. *Dev Biol* 302:367–375.
- Reinoso-Suarez F (1966) Development of the human diencephalon. In: *Evolution of the forebrain*. (Hassler R, Stephan H, eds), pp 296–304. Boston: Springer.
- Richter E (1966) Über die entwicklung des globus pallidus und des corpus subthalamicum beim menschen. In: *Evolution of the forebrain* (Hassler R, Stephan H, eds), pp 285–295. Boston: Springer.
- Riva D, Taddei M, Bulgheroni S (2018) The neuropsychology of basal ganglia. *Eur J Paediatr Neurol* 22:321–326.
- Robak A, Bogus-Nowakowska K, Sztejn S (2000) Types of neurons of the subthalamic nucleus and zona incerta in the guinea pig—Nissl and Golgi study. *Folia Morphol (Warsz)* 59:85–90.
- Roessler E, Muenke M (2010) The molecular genetics of holoprosencephaly. *Am J Med Genet C Semin Med Genet* 154C:52–61.
- Roessler E, Hu P, Marino J, Hong S, Hart R, Berger S, Martinez A, Abe Y, Kruszka P, Thomas JW, Mullikin JC, Wang Y, Wong WSW, Niederhuber JE, Solomon BD, Richieri-Costa A, Ribeiro-Bicudo LA, Muenke M (2018) Common genetic causes of holoprosencephaly are limited to a small set of evolutionarily conserved driver genes of midline development coordinated by TGF- $\beta$ , hedgehog, and FGF signaling. *Hum Mutat* 39:1416–1427.
- Rogers KW, Schier AF (2011) Morphogen gradients: from generation to interpretation. *Annu Rev Cell Dev Biol* 27:377–407.
- Romanov RA, Tretiakov EO, Kastriti ME, Zupancic M, Häring M, Korchynska S, Popadin K, Benevento M, Rebernik P, Lallemand F, Nishimori K, Clotman F, Andrews WD, Parnavelas JG, Farlik M, Bock C, Adameyko I, Hökfelt T, Keimpema E, Harkany T (2020) Molecular design of hypothalamus development. *Nature* 582:246–252.
- Romansky KV, Usunoff KG (1985) The fine structure of the subthalamic nucleus in the cat. I. Neuronal perikarya. *J Hirnforsch* 26:259–273.
- Romansky KV, Usunoff KG (1987) The fine structure of the subthalamic nucleus in the cat. II. Synaptic organization. Comparisons with the synaptology and afferent connections of the pallidal complex and the substantia nigra. *J Hirnforsch* 28:407–433.
- Rossi PJ, Gunduz A, Okun MS (2015) The subthalamic nucleus, limbic function, and impulse control. *Neuropsychol Rev* 25:398–410.
- Rouaud T, Lardeux S, Panayotis N, Paleressompoulle D, Cadour M, Baunez C (2010) Reducing the desire for cocaine with subthalamic nucleus deep brain stimulation. *Proc Natl Acad Sci U S A* 107:1196–1200.
- Rubenstein JL, Martinez S, Shimamura K, Puelles L (1994) The embryonic vertebrate forebrain: the prosomeric model. *Science* 266:578–580.
- Rubenstein JL, Shimamura K, Martinez S, Puelles L (1998) Regionalization of the prosencephalic neural plate. *Annu Rev Neurosci* 21:445–477.
- Rubenstein JLR (2010) Three hypotheses for developmental defects that may underlie some forms of autism spectrum disorder. *Curr Opin Neurol* 23:118–123.
- Ruiz i Altaba A (1994) Pattern formation in the vertebrate neural plate. *Trends Neurosci* 17:233–243.
- Saleh C, Okun MS (2008) Clinical review of deep brain stimulation and its effects on limbic basal ganglia circuitry. *Front Biosci* 13:5708–5731.
- Santiago G, Abramides DVM, De-Vitto LPM, Ribeiro LA, Meira SG, Richieri-Costa A (2006) Language skills and neuropsychological performance in patients with SHH mutations and a holoprosencephaly-like phenotype. *Am J Med Genet A* 140:2085–2090.
- Sato F, Parent M, Levesque M, Parent A (2000) Axonal branching pattern of neurons of the subthalamic nucleus in primates. *J Comp Neurol* 424:142–152.
- Schmidt C, McGonnell I, Allen S, Patel K (2008) The role of Wnt signalling in the development of somites and neural crest. *Adv Anat Embryol Cell Biol* 195:1–64.
- Scholpp S, Lumsden A (2010) Building a bridal chamber: development of the thalamus. *Trends Neurosci* 33:373–380.
- Schweizer N, Pupe S, Arvidsson E, Nordenankar K, Smith-Anttila CJA, Mahmoudi S, Andrén A, Dumas S, Rajagopalan A, Lévesque D, Leão RN, Wallén-Mackenzie Å (2014) Limiting glutamate transmission in a Vglut2-expressing subpopulation of the subthalamic nucleus is sufficient to cause hyperlocomotion. *Proc Natl Acad Sci U S A* 111:7837–7842.
- Schweizer N, Viereckel T, Smith-Anttila CJA, Nordenankar K, Arvidsson E, Mahmoudi S, Zampera A, Wärner Jonsson H, Bergquist J, Lévesque D, Konradsson-Geuken Å, Andersson M, Dumas S, Wallén-Mackenzie Å (2016) Reduced Vglut2/Slc17a6 gene expression levels throughout the mouse subthalamic nucleus cause cell loss and structural disorganization followed by increased motor activity and decreased sugar consumption. *eNeuro* 3:ENEURO.0264-16.2016.
- Shimamura K, Rubenstein JL (1997) Inductive interactions direct early regionalization of the mouse forebrain. *Development* 124:2709–2718.
- Shimamura K, Hartigan DJ, Martinez S, Puelles L, Rubenstein JL (1995) Longitudinal organization of the anterior neural plate and neural tube. *Development* 121:3923–3933.
- Shimamura K, Martinez S, Puelles L, Rubenstein JL (1997) Patterns of gene expression in the neural plate and neural tube subdivide the embryonic forebrain into transverse and longitudinal domains. *Dev Neurosci* 19:88–96.
- Shimogori T, Lee DA, Miranda-Angulo A, Yang Y, Wang H, Jiang L, Yoshida AC, Kataoka A, Mashiko H, Avetisyan M, Qi L, Qian J, Blackshaw S (2010) A genomic atlas of mouse hypothalamic development. *Nat Neurosci* 13:767–775.
- Shoji H, Ito T, Wakamatsu Y, Hayasaka N, Ohsaki K, Oyanagi M, Kominami R, Kondoh H, Takahashi N (1996) Regionalized expression of the Dbx family homeobox genes in the embryonic CNS of the mouse. *Mech Dev* 56:25–39.
- Silveri MC, Ciccarelli N, Balduono E, Piano C, Zinno M, Soleti F, Bentivoglio AR, Albanese A, Daniele A (2012) Effects of stimulation of the subthalamic nucleus on naming and reading nouns and verbs in Parkinson's disease. *Neuropsychologia* 50:1980–1989.
- Skidmore JM, Cramer JD, Martin JF, Martin DM (2008) Cre fate mapping reveals lineage specific defects in neuronal migration with loss of Pitx2 function in the developing mouse hypothalamus and subthalamic nucleus. *Mol Cell Neurosci* 37:696–707.
- Skidmore JM, Waite MR, Alvarez-Bolado G, Puelles L, Martin DM (2012) A novel TaulacZ allele reveals a requirement for Pitx2 in formation of the mammillothalamic tract. *Genesis* 50:67–73.
- Smidt MP, Cox JJ, van Schaick HS, Coolen M, Schepers J, van der Kleij AM, Burbach JP (2000) Analysis of three Ptx2 splice variants on transcriptional activity and differential expression pattern in the brain. *J Neurochem* 75:1818–1825.
- Sokolowski K, Esumi S, Hirata T, Kamal Y, Tran T, Lam A, Oboti L, Brighaupt S-C, Zaghulula M, Martinez J, Ghimbovski S, Knobloch S, Pierani A, Tamamaki N, Shah NM, Jones KS, Corbin JG (2015) Specification of select hypothalamic circuits and innate behaviors by the embryonic patterning gene dbx1. *Neuron* 86:403–416.
- Sokolowski K, Tran T, Esumi S, Kamal Y, Oboti L, Lischinsky J, Goodrich M, Lam A, Carter M, Nakagawa Y, Corbin JG (2016) Molecular and behavioral profiling of Dbx1-derived neurons in the arcuate, lateral and ventromedial hypothalamic nuclei. *Neural Dev* 11:12.
- Stern CD (2001) Initial patterning of the central nervous system: how many organizers? *Nat Rev Neurosci* 2:92–98.

- Stern CD (2002) Induction and initial patterning of the nervous system — the chick embryo enters the scene. *Curr Opin Genet Dev* 12:447–451.
- Stern CD (2006) Neural induction: 10 years on since the 'default model. *Curr Opin Cell Biol* 18:692–697.
- Storm EE, Garel S, Borello U, Hebert JM, Martinez S, McConnell SK, Martin GR, Rubenstein JLR (2006) Dose-dependent functions of *Fgf8* in regulating telencephalic patterning centers. *Development* 133:1831–1844.
- Sussel L, Marin O, Kimura S, Rubenstein JL (1999) Loss of *Nkx2.1* homeobox gene function results in a ventral to dorsal molecular respecification within the basal telencephalon: evidence for a transformation of the pallidum into the striatum. *Development* 126:3359–3370.
- Suzuki-Hirano A, Ogawa M, Kataoka A, Yoshida AC, Itoh D, Ueno M, Blackshaw S, Shimogori T (2011) Dynamic spatiotemporal gene expression in embryonic mouse thalamus. *J Comp Neurol* 519:528–543.
- Swanson LW (2012) *Brain architecture: understanding the basic plan*. New York: Oxford UP.
- Szabó N-E, Zhao T, Cankaya M, Theil T, Zhou X, Alvarez-Bolado G (2009) Role of neuroepithelial Sonic hedgehog in hypothalamic patterning. *J Neurosci* 29:6989–7002.
- Takahashi K, Liu F-C, Hirokawa K, Takahashi H (2003) Expression of *Foxp2*, a gene involved in speech and language, in the developing and adult striatum. *J Neurosci Res* 73:61–72.
- Takahashi H, Takahashi K, Liu F-C (2010) *FOXP* Genes, neural development, speech and language disorders. In: *Forkhead transcription factors: vital elements in biology and medicine* (Maiese K, ed), pp 117–129. New York: Springer.
- Tamura S, Morikawa Y, Iwanishi H, Hisaoka T, Senba E (2004) *Foxp1* gene expression in projection neurons of the mouse striatum. *Neuroscience* 124:261–267.
- Temel Y, Blokland A, Steinbusch HWM, Visser-Vandewalle V (2005) The functional role of the subthalamic nucleus in cognitive and limbic circuits. *Prog Neurobiol* 76:393–413.
- ten Donkelaar HJ, Lammens M, Aronica E, van Bokhoven H, Ulzen KK, Hori A (2014a) Development and developmental disorders of the cerebral cortex. In: *Clinical neuroembryology* (ten Donkelaar HJ, Lammens M, Hori A, eds), pp 523–642. Berlin: Springer.
- ten Donkelaar HJ, Lammens M, Cruysberg JRM, Ulzen KK, Hori A, Shiota K (2014b) 421–521. Development and developmental disorders of the forebrain. In: *Clinical neuroembryology* (ten Donkelaar HJ, Lammens M, Hori A, eds), Berlin: Springer.
- Teramitsu I, Kudo LC, London SE, Geschwind DH, White SA (2004) Parallel *FoxP1* and *FoxP2* expression in songbird and human brain predicts functional interaction. *J Neurosci* 24:3152–3163.
- Tewari A, Jog R, Jog MS (2016) The striatum and subthalamic nucleus as independent and collaborative structures in motor control. *Front Syst Neurosci* 10:17.
- Thanseem I, Nakamura K, Anitha A, Suda S, Yamada K, Iwayama Y, Toyota T, Tsujii M, Iwata Y, Suzuki K, Matsuzaki H, Iwata K, Sugiyama T, Yoshikawa T, Mori N (2011) Association of transcription factor gene *LMX1B* with autism. *PLoS One* 6:e23738.
- Tian J, Gao X, Yang L (2022) Repetitive restricted behaviors in autism spectrum disorder: from mechanism to development of therapeutics. *Front Neurosci* 16:780407.
- Tolosa A, Sanjuán J, Dagnall AM, Moltó MD, Herrero N, de Frutos R (2010) *FOXP2* gene and language impairment in schizophrenia: association and epigenetic studies. *BMC Med Genet* 11:114.
- Traiffort E, Charytoniuk D, Watroba L, Faure H, Sales N, Ruat M (1999) Discrete localizations of hedgehog signalling components in the developing and adult rat nervous system. *Eur J Neurosci* 11:3199–3214.
- Upadhyay J, Patra J, Tiwari N, Salankar N, Ansari MN, Ahmad W (2021) Dysregulation of multiple signaling neurodevelopmental pathways during embryogenesis: a possible cause of autism spectrum disorder. *Cells* 10:958.
- Vicente AM, Martins GJ, Costa RM (2020) Cortico-basal ganglia circuits underlying dysfunctional control of motor behaviors in neuropsychiatric disorders. *Curr Opin Genet Dev* 65:151–159.
- Vieira C, Martinez S (2006) Sonic hedgehog from the basal plate and the zona limitans intrathalamica exhibits differential activity on diencephalic molecular regionalization and nuclear structure. *Neuroscience* 143:129–140.
- Vieira C, Garda A-L, Shimamura K, Martinez S (2005) Thalamic development induced by *Shh* in the chick embryo. *Dev Biol* 284:351–363.
- Vieira C, Pombero A, García-Lopez R, Gimeno L, Echevarria D, Martínez S (2010) Molecular mechanisms controlling brain development: an overview of neuroepithelial secondary organizers. *Int J Dev Biol* 54:7–20.
- von Baer KE (1828) Über entwickelungsgeschichte der thiere. In: *Beobachtung und reflexion*. Königsberg: Bei den Gebrüder Bornträger.
- Von Kupffer K (1906) Die morphologie des centralnervensystems. In: *Handbuch d. vergl. u. exp. Entwicklungslehre d. Wirbelthiere* 2:1–272.
- Voon V, Kubu C, Krack P, Houeto J-L, Tröster AI (2006) Deep brain stimulation: neuropsychological and neuropsychiatric issues. *Mov Disord* 21 [Suppl 14]:S305–S327.
- Voon V, Droux F, Morris L, Chabardes S, Bougerol T, David O, Krack P, Polosan M (2017) Decisional impulsivity and the associative-limbic subthalamic nucleus in obsessive-compulsive disorder: stimulation and connectivity. *Brain* 140:442–456.
- Vue TY, Aaker J, Taniguchi A, Kazemzadeh C, Skidmore JM, Martin DM, Martin JF, Treier M, Nakagawa Y (2007) Characterization of progenitor domains in the developing mouse thalamus. *J Comp Neurol* 505:73–91.
- Waite MR, Martin DM (2015) Axial level-specific regulation of neuronal development: lessons from *PITX2*. *J Neurosci Res* 93:195–198.
- Waite MR, Skidmore JM, Micucci JA, Shiratori H, Hamada H, Martin JF, Martin DM (2013) Pleiotropic and isoform-specific functions for *Pitx2* in superior colliculus and hypothalamic neuronal development. *Mol Cell Neurosci* 52:128–139.
- Wallén-Mackenzie Å, Dumas S, Papathanou M, Martis Thiele MM, Vlcek B, König N, Björklund ÅK (2020) Spatio-molecular domains identified in the mouse subthalamic nucleus and neighboring glutamatergic and GABAergic brain structures. *Commun Biol* 3:338.
- Weintraub DB, Zaghoul KA (2013) The role of the subthalamic nucleus in cognition. *Rev Neurosci* 24:125–138.
- Wen S, Ma D, Zhao M, Xie L, Wu Q, Gou L, Zhu C, Fan Y, Wang H, Yan J (2020) Spatiotemporal single-cell analysis of gene expression in the mouse suprachiasmatic nucleus. *Nat Neurosci* 23:456–467.
- Westmoreland JJ, McEwen J, Moore BA, Jin Y, Condie BG (2001) Conserved function of *Caenorhabditis elegans* UNC-30 and mouse *Pitx2* in controlling GABAergic neuron differentiation. *J Neurosci* 21:6810–6819.
- Wilkes BJ, Lewis MH (2018) The neural circuitry of restricted repetitive behavior: magnetic resonance imaging in neurodevelopmental disorders and animal models. *Neurosci Biobehav Rev* 92:152–171.
- Wilson SW, Houart C (2004) Early steps in the development of the forebrain. *Dev Cell* 6:167–181.
- Winter C, Flash S, Klavir O, Klein J, Sohr R, Joel D (2008) The role of the subthalamic nucleus in “compulsive” behavior in rats. *Eur J Neurosci* 27:1902–1911.
- Wolpert L (1989) Positional information revisited. *Development* 107 [Suppl]:3–12.
- Wu XH, Song JJ, Faull RLM, Waldvogel HJ (2018) GABAA and GABAB receptor subunit localization on neurochemically identified neurons of the human subthalamic nucleus. *J Comp Neurol* 526:803–823.

- Xie Y, Dorsky RI (2017) Development of the hypothalamus: conservation, modification and innovation. *Development* 144:1588–1599.
- Xu Q, Tam M, Anderson SA (2008) Fate mapping Nkx2.1-lineage cells in the mouse telencephalon. *J Comp Neurol* 506:16–29.
- Yao PJ, Petralia RS, Mattson MP (2016) Sonic hedgehog signaling and hippocampal neuroplasticity. *Trends Neurosci* 39:840–850.
- Yelnik J, Percheron G (1979) Subthalamic neurons in primates: a quantitative and comparative analysis. *Neuroscience* 4:1717–1743.
- Zhang Y, Alvarez-Bolado G (2016) Differential developmental strategies by Sonic hedgehog in thalamus and hypothalamus. *J Chem Neuroanat* 75:20–27.
- Zhang Y-H, Xu M, Shi X, Sun X-L, Mu W, Wu H, Wang J, Li S, Su P, Gong L, He M, Yao M, Wu Q-F (2021) Cascade diversification directs generation of neuronal diversity in the hypothalamus. *Cell Stem Cell* 28:1483–1499.e8.
- Zou H-L, Su C-J, Shi M, Zhao G-Y, Li Z-Y, Guo C, Ding Y-Q (2009) Expression of the LIM-homeodomain gene *Lmx1a* in the postnatal mouse central nervous system. *Brain Res Bull* 78:306–312.
- Zwirner J, Möbius D, Bechmann I, Arendt T, Hoffmann K-T, Jäger C, Lobsien D, Möbius R, Planitzer U, Winkler D, Morawski M, Hammer N (2017) Subthalamic nucleus volumes are highly consistent but decrease age-dependently—a combined magnetic resonance imaging and stereology approach in humans. *Hum Brain Mapp* 38:909–922.