

Gender Difference in the Effects of COVID-19 Pandemic on Mechanical Reperfusion and 30-Day Mortality for STEMI: Results of the ISACS-STEMI COVID-19 Registry

De Luca, Giuseppe; Manzo-Silberman, Stephane; Algowhary, Magdy; Uguz, Berat; Oliveira, Dinaldo C.; Ganyukov, Vladimir; Busljetik, Oliver; Cercek, Miha; Okkels, Lisette; Loh, Poay Huan; ...

Source / Izvornik: **Journal of Clinical Medicine, 2023, 12**

Journal article, Published version

Rad u časopisu, Objavljena verzija rada (izdavačev PDF)

<https://doi.org/10.3390/jcm12030896>

Permanent link / Trajna poveznica: <https://urn.nsk.hr/urn:nbn:hr:105:321340>

Rights / Prava: [Attribution-NonCommercial-NoDerivs 3.0 Unported/Imenovanje-Nekomercijalno-Bez prerada 3.0](#)

Download date / Datum preuzimanja: **2024-10-31**



Repository / Repozitorij:

[Dr Med - University of Zagreb School of Medicine Digital Repository](#)





Article

Gender Difference in the Effects of COVID-19 Pandemic on Mechanical Reperfusion and 30-Day Mortality for STEMI: Results of the ISACS-STEMI COVID-19 Registry

Giuseppe De Luca ^{1,2,*} , Stephane Manzo-Silberman ³ , Magdy Algowhary ⁴ , Berat Uguz ⁵, Dinaldo C. Oliveira ⁶, Vladimir Ganyukov ⁷ , Oliver Busljetik ⁸, Miha Cercek ⁹, Lisette Okkels ¹⁰, Poay Huan Loh ¹¹, Lucian Calmac ¹² , Gerard Roura i Ferrer ¹³, Alexandre Quadros ¹⁴, Marek Milewski ¹⁵ , Fortunato Scotto di Uccio ¹⁶, Clemens von Birgelen ¹⁷, Francesco Versaci ¹⁸, Jurrien Ten Berg ¹⁹, Gianni Casella ²⁰, Aaron Wong Sung Lung ²¹, Petr Kala ²², José Luis Díez Gil ²³, Xavier Carrillo ²⁴, Maurits Dirksen ²⁵ , Victor Becerra ²⁶, Michael Kang-yin Lee ²⁷, Dafsah Arifa Juzar ²⁸, Rodrigo de Moura Joaquim ²⁹, Roberto Paladino ³⁰, Davor Milicic ³¹, Periklis Davlouros ³², Nikola Bakraceski ³³ , Filippo Zilio ³⁴ , Luca Donazzan ³⁵ , Adriaan Kraaijeveld ³⁶, Gennaro Galasso ³⁷ , Lux Arpad ³⁸, Lucia Marinucci ³⁹ , Vincenzo Guiducci ⁴⁰, Maurizio Menichelli ⁴¹, Alessandra Scoccia ⁴² , Aylin Hatice Yamac ⁴³, Kadir Ugur Mert ⁴⁴ , Xacobe Flores Rios ⁴⁵, Tomas Kovarnik ⁴⁶, Michal Kidawa ⁴⁷, José Moreu ⁴⁸ , Vincent Flavien ⁴⁹, Enrico Fabris ⁵⁰ , Iñigo Lozano Martínez-Luengas ⁵¹, Marco Boccalatte ⁵², Francisco Bosa Ojeda ⁵³, Carlos Arellano-Serrano ⁵⁴, Gianluca Caiazzo ⁵⁵, Giuseppe Cirrincione ⁵⁶, Hsien-Li Kao ⁵⁷, Juan Sanchis Forés ⁵⁸ , Luigi Vignali ⁵⁹, Helder Pereira ⁶⁰, Santiago Ordoñez ⁶¹ , Alev Arat Özkan ⁶² , Bruno Scheller ⁶³, Heidi Lehtola ⁶⁴, Rui Teles ⁶⁵ , Christos Mantis ⁶⁶ , Ylitalo Antti ⁶⁷, João António Brum Silveira ⁶⁸, Cesar Rodrigo Zoni ⁶⁹ , Ivan Bessonov ⁷⁰ , Giuseppe Uccello ⁷¹, George Kochiadakis ⁷², Dimitrios Alexopoulos ⁷³, Carlos E. Uribe ⁷⁴, John Kanakakis ⁷⁵, Benjamin Faurie ⁷⁶, Gabriele Gabrielli ⁷⁷, Alejandro Gutierrez Barrios ⁷⁸ , Juan Pablo Bachini ⁷⁹, Alex Rocha ⁸⁰, Frankie C. C. Tam ⁸¹, Alfredo Rodriguez ⁸², Antonia Anna Lukito ⁸³ , Veauthyelaou Saint-Joy ⁸⁴, Gustavo Pessah ⁸⁵, Andrea Tuccillo ¹⁶, Alfonso Ielasi ², Giuliana Cortese ⁸⁶, Guido Parodi ⁸⁷ , Mohamed Abed Bouraghda ⁸⁸ , Marcia Moura ¹⁴, Elvin Kedhi ⁸⁹, Pablo Lamelas ⁶¹, Harry Suryapranata ⁹⁰, Matteo Nardin ⁹¹ and Monica Verdoia ⁹²



Citation: De Luca, G.; Manzo-Silberman, S.; Algowhary, M.; Uguz, B.; Oliveira, D.C.; Ganyukov, V.; Busljetik, O.; Cercek, M.; Okkels, L.; Loh, P.H.; et al. Gender Difference in the Effects of COVID-19 Pandemic on Mechanical Reperfusion and 30-Day Mortality for STEMI: Results of the ISACS-STEMI COVID-19 Registry. *J. Clin. Med.* **2023**, *12*, 896. <https://doi.org/10.3390/jcm12030896>

Academic Editor: Attila Nemes

Received: 18 December 2022

Revised: 4 January 2023

Accepted: 17 January 2023

Published: 23 January 2023



Copyright: © 2023 by the authors. Licensee MDPI, Basel, Switzerland. This article is an open access article distributed under the terms and conditions of the Creative Commons Attribution (CC BY) license (<https://creativecommons.org/licenses/by/4.0/>).

- ¹ Division of Cardiology, AOU “Policlinico G. Martino”, Department of Clinical and Experimental Medicine, University of Messina, 98124 Messina, Italy
- ² Division of Cardiology, Nuovo Galeazzi-Sant’Ambrogio Hospital, 20161 Milan, Italy
- ³ ACTION Study Group, Institute of Cardiology—Hôpital Pitié-Salpêtrière (AP-HP), Sorbonne University, 75651 Paris, France
- ⁴ Division of Cardiology, Assiut University Heart Hospital, Assiut University, Assiut 71515, Egypt
- ⁵ Division of Cardiology, Bursa City Hospital, 16000 Bursa, Turkey
- ⁶ Pronto de Socorro Cardiologico Prof. Luis Tavares, Centro PROCAPE, Federal University of Pernambuco, Recife 50670-901, Brazil
- ⁷ Department of Heart and Vascular Surgery, State Research Institute for Complex Issues of Cardiovascular Diseases, 650000 Kemerovo, Russia
- ⁸ University Clinic for Cardiology, Medical Faculty, Ss’ Cyril and Methodius University, 1000 Skopje, North Macedonia
- ⁹ Department of Cardiology, Medical Center Ljubljana, 1000 Ljubljana, Slovenia
- ¹⁰ Division of Cardiology, Odense Universitets Hospital, 5000 Odense, Denmark
- ¹¹ Department of Cardiology, National University Hospital, Singapore 117597, Singapore
- ¹² Clinic Emergency Hospital of Bucharest, 014461 Bucharest, Romania
- ¹³ Interventional Cardiology Unit, Heart Disease Institute, Hospital Universitari de Bellvitge, 08016 Barcelona, Spain
- ¹⁴ Instituto de Cardiologia do Rio Grande do Sul, Porto Alegre 90040-371, Brazil
- ¹⁵ Division of Cardiology, Medical University of Silezia, 40-002 Katowice, Poland
- ¹⁶ Division of Cardiology, Ospedale del Mare, 00156 Napoli, Italy

- 17 Department of Cardiology, Medisch Spectrum Twente, Thoraxcentrum Twente, 7541 Enschede, The Netherlands
- 18 Division of Cardiology, Ospedale Santa Maria Goretti Latina, 04100 Latina, Italy
- 19 Division of Cardiology, St. Antonius Hospital, 3434 Nieuwegein, The Netherlands
- 20 Division of Cardiology, Ospedale Maggiore Bologna, 40100 Bologna, Italy
- 21 Department of Cardiology, National Heart Center, Singapore 169609, Singapore
- 22 University Hospital Brno, Medical Faculty of Masaryk University, 60200 Brno, Czech Republic
- 23 Sección de la Unidad de Hemodinámica H. Universitario y Politécnico La Fe, 46001 Valencia, Spain
- 24 Hospital Germans Triasi Pujol, 8918 Badalona, Spain
- 25 Division of Cardiology, Northwest Clinics, 1811 Alkmaar, The Netherlands
- 26 Hospital Clínico Universitario Virgen de la Victoria, 29000 Malaga, Spain
- 27 Department of Cardiology, Queen Elizabeth Hospital, University of Hong Kong, Hong Kong
- 28 Department of Cardiology and Vascular Medicine, University of Indonesia National Cardiovascular Center “Harapan Kita”, Jakarta 11420, Indonesia
- 29 Instituto de Cardiologia de Santa Catarina Praia Comprida, São José 88103-901, Brazil
- 30 Division of Cardiology, Clinica Villa dei Fiori, 80011 Acerra, Italy
- 31 Department of Cardiology, University Hospital Centre, University of Zagreb, 10000 Zagreb, Croatia
- 32 Invasive Cardiology and Congenital Heart Disease, Patras University Hospital, 26221 Patras, Greece
- 33 Center for Cardiovascular Diseases, 6000 Ohrid, North Macedonia
- 34 Division of Cardiology, Ospedale Santa Chiara di Trento, 38014 Trento, Italy
- 35 Division of Cardiology, Ospedale “S. Maurizio” Bolzano, 39100 Bolzano, Italy
- 36 Division of Cardiology, 3584 Utrecht, The Netherlands
- 37 Division of Cardiology, Ospedale San Giovanni di Dio e Ruggi d’Aragona, 84070 Salerno, Italy
- 38 Maastricht University Medical Center, 6229 Maastricht, The Netherlands
- 39 Division of Cardiology, Azienda Ospedaliera “Ospedali Riuniti Marche Nord”, 61121 Pesaro, Italy
- 40 Division of Cardiology, AUSL-IRCCS Reggio Emilia, 42121 Reggio Emilia, Italy
- 41 Division of Cardiology, Ospedale “F. Spaziani”, 03100 Frosinone, Italy
- 42 Division of Cardiology, Ospedale “Sant’Anna”, 44121 Ferrara, Italy
- 43 Department of Cardiology, Bezmialem Vakif University Hospital, 34093 Istanbul, Turkey
- 44 Division of Cardiology, Faculty of Medicine, Eskisehir Osmangazi University, 02640 Eskisehir, Turkey
- 45 Complejo Hospitalario Universitario La Coruna, 15001 La Coruna, Spain
- 46 University Hospital Prague, 12808 Prague, Czech Republic
- 47 Central Hospital of Medical University of Lodz, 90-008 Lodz, Poland
- 48 Division of Cardiology, Complejo Hospitalario de Toledo, 45001 Toledo, Spain
- 49 Division of Cardiology, Center Hospitalier Universitaire de Lille, 59000 Lille, France
- 50 Azienda Ospedaliero—Universitaria Ospedali Riuniti, 34142 Trieste, Italy
- 51 Division of Cardiology, Hospital Cabueñes, 33201 Gijon, Spain
- 52 Division of Cardiology, Ospedale Santa Maria delle Grazie, 80078 Pozzuoli, Italy
- 53 Division of Cardiology, Hospital Universitario de Canarias, 38001 Santa Cruz de Tenerife, Spain
- 54 Division of Cardiology, Hospital Puerta de Hierro Majadahonda, 28222 Majadahonda, Spain
- 55 Division of Cardiology, Ospedale “G Moscati”, 81031 Aversa, Italy
- 56 Division of Cardiology, Ospedale Civico Arnas, 90100 Palermo, Italy
- 57 Cardiology Division, Department of Internal Medicine, National Taiwan University Hospital, Taipei 8865600, Taiwan
- 58 Division of Cardiology, Hospital Clinico Universitario de Valencia, 46010 Valencia, Spain
- 59 Interventional Cardiology Unit, Azienda Ospedaliera Sanitaria, 43121 Parma, Italy
- 60 Cardiology Department, Hospital Garcia de Orta, Pragal, 2805-267 Almada, Portugal
- 61 Instituto Cardiovascular de Buenos Aires, Buenos Aires 1428, Argentina
- 62 Cardiology Institute, Istanbul University, 34000 Istanbul, Turkey
- 63 Division of Cardiology, Clinical and Experimental Interventional Cardiology, University of Saarland, 66123 Saarbrücken, Germany
- 64 Division of Cardiology, Oulu University Hospital, 90220 Oulu, Finland
- 65 Division of Cardiology, Hospital de Santa Cruz, CHLO—Nova Medical School, CEDOC, 1000 Lisbon, Portugal
- 66 Division of Cardiology, Kontantopoulion Hospital, 10431 Athens, Greece
- 67 Division of Cardiology, Heart Centre Turku, 20521 Turku, Finland
- 68 Division of Cardiology, Hospital de Santo António, 4099-001 Porto, Portugal
- 69 Department of Teaching and Research, Instituto de Cardiología de Corrientes “Juana F. Cabral”, Corrientes W3400CDS, Argentina
- 70 Tyumen Cardiology Research Center, Tomsk National Research Medical Center, Russian Academy of Science, 634000-634538 Tomsk, Russia
- 71 Division of Cardiology, Ospedale “A. Manzoni”, 23900 Lecco, Italy
- 72 Iraklion University Hospital, 70001 Crete, Greece

- ⁷³ Division of Cardiology, Attikon University Hospital, 10431 Athens, Greece
⁷⁴ Division of Cardiology, Universidad UPB, Universidad CES, Medellín 050001, Colombia
⁷⁵ Division of Cardiology, Alexandra Hospital, 10431 Athens, Greece
⁷⁶ Division of Cardiology, Groupe Hospitalier Mutualiste de Grenoble, 38000 Grenoble, France
⁷⁷ Interventional Cardiology Unit, Azienda Ospedaliero Universitaria “Ospedali Riuniti”, 60100 Ancona, Italy
⁷⁸ Division of Cardiology, Hospital Puerta del Mar, 11001 Cadiz, Spain
⁷⁹ Instituto de Cardiología Integral, Montevideo 11700, Uruguay
⁸⁰ Department of Cardiology and Cardiovascular Interventions, Instituto Nacional de Cirugía Cardíaca, Montevideo 11700, Uruguay
⁸¹ Department of Cardiology, Queen Mary Hospital, University of Hong Kong, Hong Kong
⁸² Division of Cardiology, Otamendi Hospital, Buenos Aires 1001, Argentina
⁸³ Cardiovascular Department Pelita Harapan University, Heart Center Siloam Lippo Village Hospital, Tangerang, Banten 15810, Indonesia
⁸⁴ Center Hospitalier d’Antibes Juan Les Pins, 06600 Antibes, France
⁸⁵ Division of Cardiology, Hospiatl Cordoba, Cordoba 5000, Argentina
⁸⁶ Department of Statistical Sciences, University of Padova, 35121 Padova, Italy
⁸⁷ Azienda Ospedaliera Lavagna, 16033 Lavagna, Italy
⁸⁸ Division of Cardiology, Blida University Hospital, Blida 09000, Algeria
⁸⁹ Division of Cardiology, Hopital Erasmus, Université Libre de Bruxelles, 1070 Brussels, Belgium
⁹⁰ Division of Cardiology, Radboud University Medical Center, 6525 Nijmegen, The Netherlands
⁹¹ Department of Internal Medicine, Ospedale Riuniti, 25121 Brescia, Italy
⁹² Division of Cardiology, Ospedale degli Infermi, ASL, 13900 Biella, Italy
* Correspondence: giuseppe.deluca@unime.it

Abstract: Background. Several reports have demonstrated the impact of the COVID-19 pandemic on the management and outcome of patients with ST-segment elevation myocardial infarction (STEMI). The aim of the current analysis is to investigate the potential gender difference in the effects of the COVID-19 pandemic on mechanical reperfusion and 30-day mortality for STEMI patients within the ISACS-STEMI COVID-19 Registry. Methods. This retrospective multicenter registry was performed in high-volume primary percutaneous coronary intervention (PPCI) centers on four continents and included STEMI patients undergoing PPCIs in March–June 2019 and 2020. Patients were divided according to gender. The main outcomes were the incidence and timing of the PPCI, (ischemia time ≥ 12 h and door-to-balloon ≥ 30 min) and in-hospital or 30-day mortality. Results. We included 16683 STEMI patients undergoing PPCIs in 109 centers. In 2020 during the pandemic, there was a significant reduction in PPCIs compared to 2019 (IRR 0.843 (95% CI: 0.825–0.861, $p < 0.0001$). We did not find a significant gender difference in the effects of the COVID-19 pandemic on the numbers of STEMI patients, which were similarly reduced from 2019 to 2020 in both groups, or in the mortality rates. Compared to pre-pandemic, 30-day mortality was significantly higher during the pandemic period among female (12.1% vs. 8.7%; adjusted HR [95% CI] = 1.66 [1.31–2.11], $p < 0.001$) but not male patients (5.8% vs. 6.7%; adjusted HR [95% CI] = 1.14 [0.96–1.34], $p = 0.12$). Conclusions. The COVID-19 pandemic had a significant impact on the treatment of patients with STEMI, with a 16% reduction in PPCI procedures similarly observed in both genders. Furthermore, we observed significantly increased in-hospital and 30-day mortality rates during the pandemic only among females. *Trial registration number: NCT 04412655.*

Keywords: gender; ST-segment elevation myocardial infarction; percutaneous coronary intervention; COVID-19

1. Introduction

The SARS-CoV-2 virus has largely and rapidly spread across the world, infecting more than 300 million people, with more than 5 million deaths [1,2]. The COVID-19 pandemic has severely impacted our healthcare systems, with the subsequent suspension of elective procedures and treatment of chronic conditions. Despite the maintenance of services for the management of urgent conditions, such as acute coronary syndromes, several previous reports have clearly shown a reduction in the number of treated acute

coronary cases, mainly due to the fear of contagion that prevents patient presentation to hospitals [3–5]. Additionally, the time from symptom onset to treatment has significantly risen [6–8], secondary to the oversaturation of emergency departments, which contributes to explaining the higher mortality among STEMI patients observed in 2020. These results were confirmed by the recent International Study on Acute Coronary Syndromes—ST Elevation Myocardial Infarction (ISACS-STEMI) COVID-19 Registry [9], which provided a snapshot on the treatment and outcomes of STEMI patients treated with primary angioplasty during the COVID-19 pandemic in more than one hundred hospitals worldwide.

Male gender has been associated with a higher risk of COVID-19 infection compared to females, with higher rates of complications and worse outcomes [10,11]. Oppositely, among STEMI patients, females generally display more comorbidities and higher mortality [12,13]. However, thus far no study has investigated any potential gender difference in the impact of COVID-19 on STEMI cases treated percutaneously or clinical outcomes, with special attention to major high-risk features such as age, diabetes, smoking, and hypertension [14], which is the aim of the current study.

2. Methods

Study Design and Population

This is a large-scale retrospective multicenter registry promoted by Eastern Piedmont University, Novara, Italy. The initial planning included European primary PCI centers [9], but the study was subsequently extended to several other regions in different continents (Latin America, southeast Asia, and north Africa). Included centers were required to perform more than 120 primary PCI/year (with an expected average >10/month), with the STEMI caseload not expected to undergo a planned reorganization of the STEMI network. The initial inclusion period was 2 months (from 1 March until 30 April) but was subsequently prolonged to 30 June 2020. The data were compared with those retrospectively collected during the same months of 2019 (from 1 March until 30 June).

Inclusion criteria: STEMI treated with primary angioplasty (including mechanical reperfusion for failed thrombolysis).

Data Collection: Anonymized data were collected through a dedicated CRF. Each center identified a local Principal Investigator. Demographic, clinical, and procedural data, including total ischemia and door-to-balloon time, referral to primary PCI facility, COVID-19 positivity, PCI procedural data, and in-hospital mortality were recorded. Data were centralized and managed at Eastern Piedmont University.

Statistics: Data were analyzed using SPSS Statistics Software 23.0 (IBM SPSS Inc., Chicago, IL, USA) and R software (version 3.6.2) by an independent statistician (GC), as previously described [9]. Quantitative variables were described using medians and interquartile ranges. Means and confidence intervals were obtained assuming Poisson distributions for counted data. Incidence rate ratio (IRR) was defined as the ratio between the counted data in 2020 and the counted data in 2019. Data were normalized for the different sizes of national populations and for the possible different time periods of observation, and we considered the number of STEMI per million residents in the corresponding population in a year (<https://knoema.com/atlas/topics/Demographics>; accessed on 17 December 2022). Poisson regression models (with log link function) were applied to compare the incidence rates of primary PCIs per million residents per year in 2020 with the same rates in 2019, correcting for possible impacts of major risk factors [15]. Details are described in the Supplementary Materials (Section 1.1). Analyses were also conducted according to major European geographic areas (see Supplementary Materials) and subgroups of patients, such as age, gender, diabetes, and hypertension.

A subsequent analysis was based on individual patient data, which were grouped according to the year of the intervention (2019 vs. 2020). Absolute frequencies and percentages were used for qualitative variables. ANOVA or Mann–Whitney and chi-squared tests were used for continuous and categorical variables, respectively. Normal distribution of continuous variables was tested with the Kolmogorov–Smirnov test.

Multivariable logistic regression analyses were performed to identify the impact of the year of intervention on time delays and mortality after adjusting for baseline confounding factors between the two groups. Gender heterogeneity was assessed by the insertion of an interaction term in the regression analysis. All significant variables (set at a p -values < 0.1) were entered in a block into the model. Interaction was tested by the use of A , and $p < 0.05$ was considered statistically significant. The data coordination center was established at Eastern Piedmont University.

Study endpoints. The primary study endpoint was the number of primary PCIs per million residents. Secondary study endpoints were the in-hospital and 30-day mortality.

Sample size calculation. In view of the observational nature of this registry, no sample size calculations or statistical power analyses were performed.

3. Results

A total of 109 centers participated (Table S1), leading to the inclusion of 16,674 STEMI patients, of whom 9044 admitted in 2019 and 7630 in 2020, including 12,164 (75.6%) males and 3919 (24.4%) females.

The number of STEMI patients treated percutaneously per million residents showed a consistent reduction, on average, from 559 (95% CI 514–607) in 2019 to 477 (95% CI 435–522) in 2020. (Figure 1 and Figures S1–S3). The incidence rate ratio (IRR) was 0.843 (95% CI 0.825–0.861, $p < 0.0001$), showing a significant reduction of 15.7% in the number of STEMI cases from 2019 to 2020.

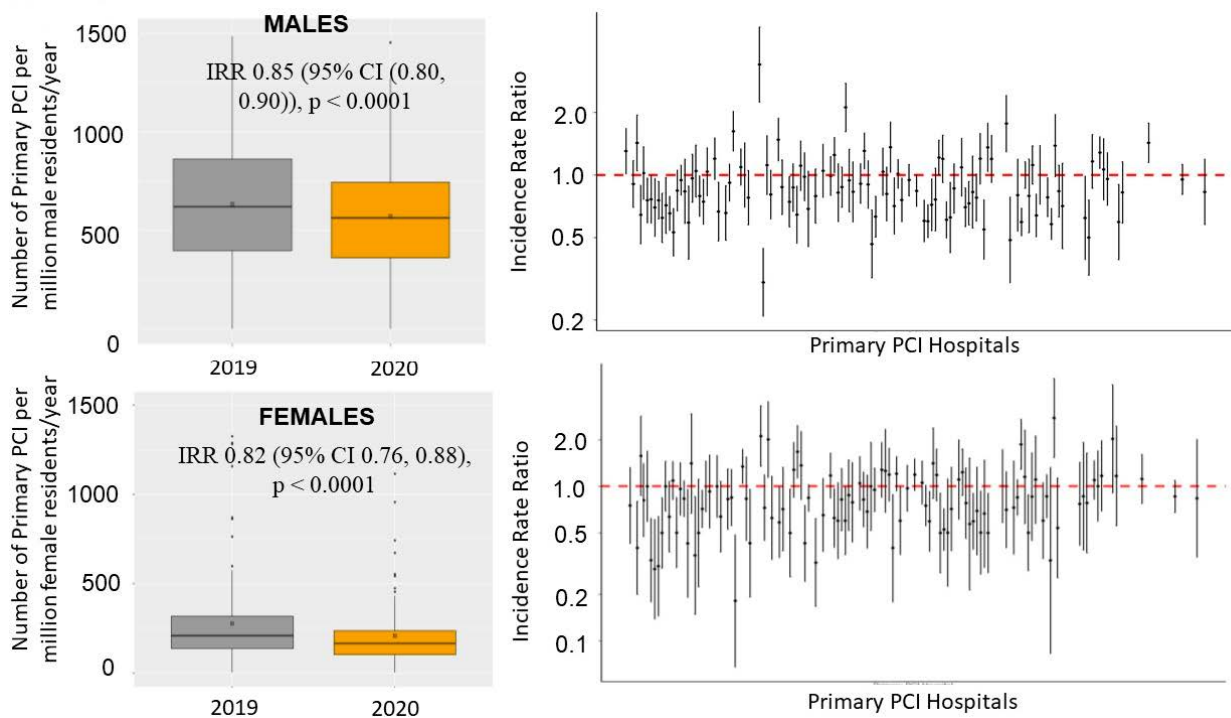


Figure 1. Box-and-whisker plot (on the left) showing the numbers of STEMI patients treated by mechanical reperfusion per million inhabitants/year in 2019 and 2020. The right graph shows the incidence rate ratio with 95% confidence intervals across each center.

We did not find a significant gender-related reduction (p interaction = 0.14), with similar reductions in both sexes. Among males, the number of STEMI patients treated percutaneously per million residents had a consistent reduction, on average, from 823 (95% CI 768–881) in 2019 to 721 (95% CI 669–776) in 2020 (incidence rate ratio (IRR) of 0.852 (95% CI 0.803, 0.903) < 0.0001) (Figures 1 and S1). Significant heterogeneity was observed among the centers (IRRs had high variability among centers measured by a std error =0.28

in a random effect Poisson model; comparison with a fixed effect Poisson model provided an ANOVA chi-squared test with $p < 0.001$) (Figure 1).

Among women, the number of STEMI patients treated percutaneously per million residents had a consistent reduction, on average, from 277 (95% CI 245–312) in 2019 to 223 (95% CI 195–254) in 2020 (IRR 0.822 (95% CI 0.764, 0.885) < 0.0001) (Figures 1 and S2).

Significant heterogeneity was observed among the centers (IRRs had high variability among centers measured by a std error = 0.33 in a random effect Poisson model; comparison with a fixed effect Poisson model provided an ANOVA chi-squared test with $p < 0.001$) (Figure 1).

The heterogeneity among centers was not related to the incidence of COVID-19 infection or to COVID-related mortality (Figures S3–S6). In fact, in both genders the reduction in STEMI procedures was not associated with either of the following: the national number of COVID-19-positive patients at both 30 April (males: $r = 0.065$, p -value = 0.502; females: $r = -0.108$, p -value = 0.264) and 30 June (males $r = 0.133$, p -value = 0.169, Figure S3; females: $r = -0.017$, p -value = 0.860, Figure S4) or the national number of COVID-related deaths at 30 April (males: $r = 0.031$, p -value = 0.748; females: $r = -0.133$, p -value = 0.167) and 30 June (males: $r = -0.002$, p -value = 0.983, Figure S5; females $r = -0.121$, p -value = 0.212, Figure S6). Among males, almost all participating continents had significant reductions in STEMI patients (Figures S7 and S8), whereas among females this was observed only for European centers (Figures S9 and S10).

Furthermore, we used a Poisson regression to investigate in both male and female patients the reductions in STEMI according to subgroup, including age, hypertension, diabetes, and smoking. We found significant differences in these reductions between smokers (IRR (95% CI) = 0.819 (0.793, 0.846), $p < 0.0001$) and nonsmokers in males (IRR (95% CI) = 0.931 (0.896, 0.967), $p < 0.0001$) (Figures S14 and S15) (p int < 0.0001), whereas among female patients we found a significant difference between diabetic (IRR (95% CI) = 0.916 (0.846, 0.992), $p = 0.031$) and nondiabetic patients (IRR (95% CI) = 0.792 (0.752, 0.833), $p < 0.0001$) (p int = 0.002) (Figures S13 and S16) and between elderly (IRR (95% CI) = 0.757 (0.700, 0.819), $p < 0.0001$) and young patients (IRR (95% CI) = 0.855 (0.812, 0.900), $p < 0.0001$) ($p = 0.011$) (Figures S11 and S16).

4. Baseline Demographic and Clinical Characteristics

Individual data analysis was restricted to 16,083 patients with complete demographic, clinical, procedural, and outcome data (complete cases: 96.4%), with 8698 in 2019 and 7385 in 2020. Table 1 shows the baseline characteristics of male and female patients according to year of intervention. Males treated in 2019 had a larger prevalence of smoking ($p = 0.003$) and family history of CAD ($p = 0.034$) and a different geographic distribution ($p = 0.001$) compared to 2020, whereas females treated in 2020 were younger than those treated in 2019.

As shown in Table 1, the COVID-19 pandemic was associated with longer ischemia time in both genders, whereas a significantly longer door-to-balloon time was observed only in male patients (Figure 2).

The association between the COVID-19 pandemic and ischemia times longer than 12 h was confirmed after correction for baseline clinical confounders in males (adjustment for geographic area, family history of CAD, smoking, radial access, door-to-balloon time > 30 min, additional PCI, COVID-19 positivity, and in-hospital RASI therapy; adjusted OR = 1.32 [1.12–1.55], $p < 0.001$), but not in female patients (adjustment for age, intravenous antiplatelet therapy, additional PCI, COVID-19 positivity, and in-hospital RASI therapy; adjusted OR = 1.16 [0.95–1.411], $p = 0.14$). No significant interactions were observed for major risk factors among male (age, $p = 0.93$; diabetes, $p = 0.50$; hypertension, $p = 0.13$; smoking, $p = 0.96$) and female patients (age, $p = 0.84$; diabetes, $p = 0.52$; hypertension, $p = 0.18$; smoking, $p = 0.29$).

The association between the COVID-19 pandemic and door-to-balloon times longer than 30 min was confirmed after correction for baseline clinical confounders in male patients (adjustment for geographic area, family history of CAD, smoking, radial access, ischemia

time > 12 h, additional PCI, COVID-19 positivity, and in-hospital RASI therapy; adjusted OR =1.1 [1.03–1.2], $p = 0.007$). No significant interactions were observed for major risk factors among male patients (age, $p = 0.89$; diabetes, $p = 0.87$; smoking, $p = 0.9$), with the exception of hypertension ($p = 0.022$).

Table 1. Baseline demographic and clinical characteristics.

	2019 Males (<i>n</i> = 6571)	2020 Males (<i>n</i> = 5593)	<i>p</i> -Value	2019 Females (<i>n</i> = 2127)	2020 Females (<i>n</i> = 1792)	<i>p</i> -Value
Age—median [IQR]	61 [53–69]	61 [53–70]	0.85	68 [59–79]	67 [58–78]	0.01 *
Elderly (>75 y)— <i>n</i> (%)	967 (14.7)	805 (14.4)	0.624	715 (33.6)	560 (31.3)	0.615
Medical History						
Hypertension— <i>n</i> (%)	3375 (51.4)	2896 (51.8)	0.647	1370 (64.4)	1172 (65.4)	0.517
Diabetes mellitus— <i>n</i> (%)	1458 (22.2)	1228 (22)	0.758	580 (27.3)	546 (30.5)	0.027
Hypercholesterolemia— <i>n</i> (%)	2591 (39.4)	2150 (38.4)	0.265	854 (40.2)	758 (42.3)	0.173
Smoker— <i>n</i> (%)	3972 (60.4)	3233 (57.8)	0.003	857 (40.3)	724 (40.4)	0.944
Family history of CAD— <i>n</i> (%)	1409 (21.4)	1112 (19.9)	0.034	426 (20)	351 (19.6)	0.730
Previous STEMI— <i>n</i> (%)	680 (10.3)	575 (10.3)	0.903	152 (7.1)	136 (7.6)	0.596
Previous PCI— <i>n</i> (%)	855 (13)	781 (14)	0.125	183 (8.6)	174 (9.7)	0.231
Previous CABG— <i>n</i> (%)	120 (1.8)	98 (1.8)	0.759	24 (1.1)	30 (1.7)	0.144
Geographic area						
Europe— <i>n</i> (%)	5201 (79.2)	4378 (78.3)	0.001	1782 (83.8)	1453 (81.1)	
Latin America— <i>n</i> (%)	446 (6.8)	523 (9.4)		184 (8.7)	197 (11)	
Southeast Asia— <i>n</i> (%)	613 (9.3)	506 (9)		93 (4.4)	81 (4.5)	
North Africa— <i>n</i> (%)	311 (4.7)	186 (3.3)		68 (3.2)	61 (3.4)	
Referral to Primary PCI Hospital Type						
Ambulance (from community)— <i>n</i> (%)	3111 (47.3)	2680 (47.9)	0.782	1051 (49.4)	896 (50)	0.616
Direct access to hub— <i>n</i> (%)	1896 (28.9)	1585 (28.3)		553 (26)	479 (26.7)	
Transfer from spoke— <i>n</i> (%)	1564 (23.8)	1328 (23.7)		523 (24.6)	417 (23.3)	
Time delays						
Ischemia time—median [25–75th]	190 [120–340]	213 [129–390]	<0.001	215 [130–390]	240 [140–433]	<0.001 *
Total ischemia time						
<6 h— <i>n</i> (%)	5078 (77.3)	4063 (72.6)		1544 (72.6)	1237 (69)	
6–12 h— <i>n</i> (%)	931 (14.2)	881 (15.8)	<0.001	353 (16.6)	334 (18.6)	0.015
12–24 h— <i>n</i> (%)	376 (5.7)	417 (7.5)		161 (7.6)	134 (7.5)	
>24 h— <i>n</i> (%)	186 (2.8)	232 (4.1)		69 (3.2)	87 (4.9)	
Total ischemia time > 12 h— <i>n</i> (%)	562 (8.6)	649 (11.6)	<0.001	230 (10.8)	221 (12.3)	0.138
Door-to-balloon time—median [25–75th]						
Door-to-balloon time	39 [25–62]	40 [25–70]	<0.001	40 [25–70]	40 [25–70]	0.2 *
<30 min—<i>n</i> (%)						
<30 min— <i>n</i> (%)	2730 (41.5)	2165 (38.7)	<0.001	849 (39.9)	689 (38.4)	0.556
30–60 min— <i>n</i> (%)	2161 (32.9)	1836 (32.8)		684 (32.2)	578 (32.3)	
>60 min— <i>n</i> (%)	1680 (25.6)	1592 (28.5)		594 (27.9)	525 (29.3)	
Door-to-balloon time > 30 min— <i>n</i> (%)	3841 (58.5)	3428 (61.3)	0.001	1278 (60.1)	1103 (61.6)	0.349
Clinical Presentation						
Anterior STEMI— <i>n</i> (%)	3036 (46.2)	2657 (47.5)	0.151	950 (44.7)	803 (44.8)	0.927
Out-of-hospital cardiac arrest— <i>n</i> (%)	400 (6.1)	346 (6.2)	0.821	115 (5.4)	95 (5.3)	0.547
Cardiogenic shock— <i>n</i> (%)	460 (7)	396 (7.1)	0.551	165 (7.8)	148 (8.3)	0.564
Rescue PCI for failed thrombolysis— <i>n</i> (%)	468 (7.1)	364 (6.5)	0.181	137 (6.4)	130 (7.3)	0.314

* Mann–Whitney test. CAD—coronary artery disease; STEMI—ST-segment elevation myocardial infarction; PCI—percutaneous coronary intervention; CABG—coronary artery bypass graft.

No differences were observed in the rates of cardiogenic shock at presentation, infarct location, out-of-hospital cardiac arrest, or rescue procedures after failed thrombolysis.

5. Procedural Characteristics

Concerning procedural characteristics (Table 2), the uses of DES (89.9% vs. 88.5%, $p = 0.013$) and radial access (79.3% vs. 75.5%, $p < 0.001$) were more frequent in 2020 (92.7% vs. 90.6%, $p = 0.003$) among male patients, whereas female patients had larger use of intravenous antiplatelet therapies in 2020 compared to 2019 (18.6% vs. 15.4%, $p = 0.007$). Additional in-hospital PCI and RASI therapies were observed more often in 2020 compared to 2019 in both groups.

Table 2. Angiographic and procedural characteristics.

	2019 Males (n = 6571)	2020 Males (n = 5593)	p-Value	2019 Females (n = 2127)	2020 Females (n = 1792)	p-Value
Radial access—n (%)	4960 (75.5)	4438 (79.3)	<0.001	1563 (73.5)	1307 (72.9)	0.699
<i>Culprit vessel</i>						
Left main—n (%)	110 (1.7)	88 (1.6)		31 (1.5)	23 (1.3)	
Left anterior descending artery—n (%)	3025 (46.1)	2585 (46.2)	0.395	964 (45.3)	786 (43.9)	0.820
Circumflex—n (%)	967 (14.7)	867 (15.5)		279 (13.1)	237 (13.2)	
Right coronary artery—n (%)	2416 (36.8)	2007 (35.9)		844 (39.7)	734 (41)	
Anterolateral branch—n (%)	23 (0.4)	13 (0.2)		2 (0.1)	3 (0.2)	
SVG—n (%)	30 (0.5)	33 (0.6)		7 (0.3)	9 (0.5)	
In-stent thrombosis—n (%)	274 (4.2)	227 (4.1)	0.758	65 (3.1)	66 (3.7)	0.277
<i>Vessel disease—n (%)</i>						
1	3311 (50.4)	2788 (49.8)	0.216	1151 (54.1)	947 (52.8)	0.526
2	1902 (28.9)	1695 (30.3)		572 (26.9)	511 (28.5)	
3	1358 (20.7)	1110 (19.8)		404 (19)	334 (18.6)	
Preprocedural TIMI 0 flow—n (%)	4422 (67.3)	3784 (67.7)	0.673	1344 (63.2)	1181 (65.9)	0.077
Thrombectomy—n (%)	1115 (17)	921 (16.5)	0.460	287 (13.5)	240 (13.4)	0.927
Stenting—n (%)	6056 (92.2)	5141 (91.9)	0.620	1942 (91.3)	1627 (90.8)	0.487
Drug-eluting stent—n (%)	5814 (88.5)	5027 (89.9)	0.013	1842 (86.6)	1571 (87.7)	0.321
Postprocedural TIMI 3 flow—n (%)	6104 (92.9)	5188 (92.8)	0.775	1926 (90.6)	1603 (89.5)	0.253
<i>Gp IIb-IIIa inhibitors/cangrelor—n (%)</i>						
Bivalirudin—n (%)	1426 (21.7)	1180 (21.1)	0.419	327 (15.4)	334 (18.6)	0.007
Mechanical support—n (%)	25 (0.4)	14 (0.3)	0.206	9 (0.4)	4 (0.2)	0.278
<i>Additional PCI</i>						
During index procedure—n (%)	190 (2.9)	192 (3.4)	0.088	56 (2.6)	59 (3.3)	0.223
<i>Additional PCI</i>						
Staged—n (%)	605 (9.2)	599 (10.7)	0.009	182 (8.6)	190 (10.6)	0.046
DAPT therapy—n (%)	702 (10.7)	629 (11.2)		184 (8.7)	171 (9.5)	
In-hospital RASI—n (%)	6492 (98.8)	5539 (99)	0.211	2101 (98.8)	1773 (98.9)	0.635
In-hospital mortality—n (%)	3552 (54.1)	3293 (58.9)	<0.001	1074 (50.5)	978 (54.6)	0.011
In-hospital mortality—n (%)	310 (4.7)	302 (5.4)	0.086	147 (6.9)	179 (10)	0.001
30-day mortality—n (%)	343 (5.8)	332 (6.7)	0.074	161 (8.7)	191 (12.1)	0.001

TIMI—thrombolysis in myocardial infarction; DAPT—dual antiplatelet therapy.

6. In-Hospital and 30-Day Mortality

A significantly higher in-hospital mortality rate was observed in 2020 compared to 2019 in females (10% vs. 6.9%, OR [95% CI] = 1.44 [1.17–1.78], $p < 0.001$), but not in male patients (4.7% vs. 5.4%, OR [95% CI] = 1.14 [0.98–1.34], $p = 0.086$) (Figure 2) (p interaction = 0.069). The mortality rates were extremely high among COVID-19-positive patients ($n = 109$: 80 males and 29 females), especially among males (28.8% vs. 4.9%, $p < 0.001$) compared to female patients (17.2% vs. 8.3%, $p = 0.081$) (p interaction = 0.022).

These results were confirmed after correction for all potential confounding factors (female patients: adjustment for age, ischemia time, intravenous antiplatelet therapy, additional PCI, COVID-19 positivity, in-hospital RASI therapy (adjusted OR [95% CI] = 1.71 [1.34–2.18], $p < 0.001$); male patients: adjustment for geographic area, family history of CAD, smoking, radial access, door-to-balloon time > 30 min, ischemia time > 12 h, additional PCI, COVID-19 positivity, and in-hospital RASI therapy (adjusted OR [95% CI] = 1.17 [0.98–1.39], $p = 0.081$).

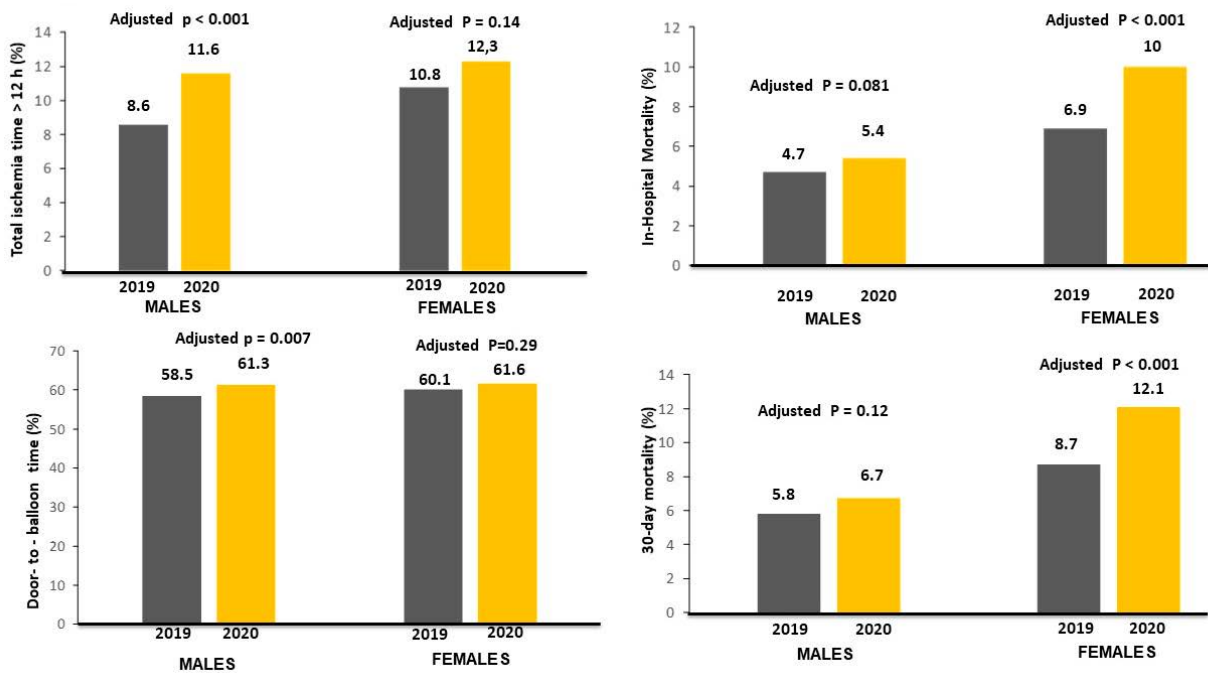


Figure 2. Bar graphs on the left side show the association between the year of intervention and time delays (ischemia times longer than 12 h in left upper graph; door-to-balloon times longer than 30 min in left lower graph). Bar Graphs on the right side show the association between the year of intervention with in-hospital (right upper graph) and 30-day mortality (right lower graph) rates.

Data on 30-day mortality were available for 14303 individuals (88.9%). Patients treated in 2020 had significantly higher mortality in female (12.1% vs. 8.7%, HR [95% CI] = 1.66 [1.31–2.11], $p < 0.001$) but not male patients (5.8% vs. 6.7%, HR [95% CI] = 1.14 [0.99–1.32], $p = 0.074$) ($p_{int} = 0.1$). The results were confirmed after adjustment for confounders (adjusted HR [95% CI] = 1.52 [1.21–1.92], $p < 0.001$; adjusted HR [95% CI] = 1.14 [0.96–1.36], $p = 0.12$, respectively) (Figure 3).

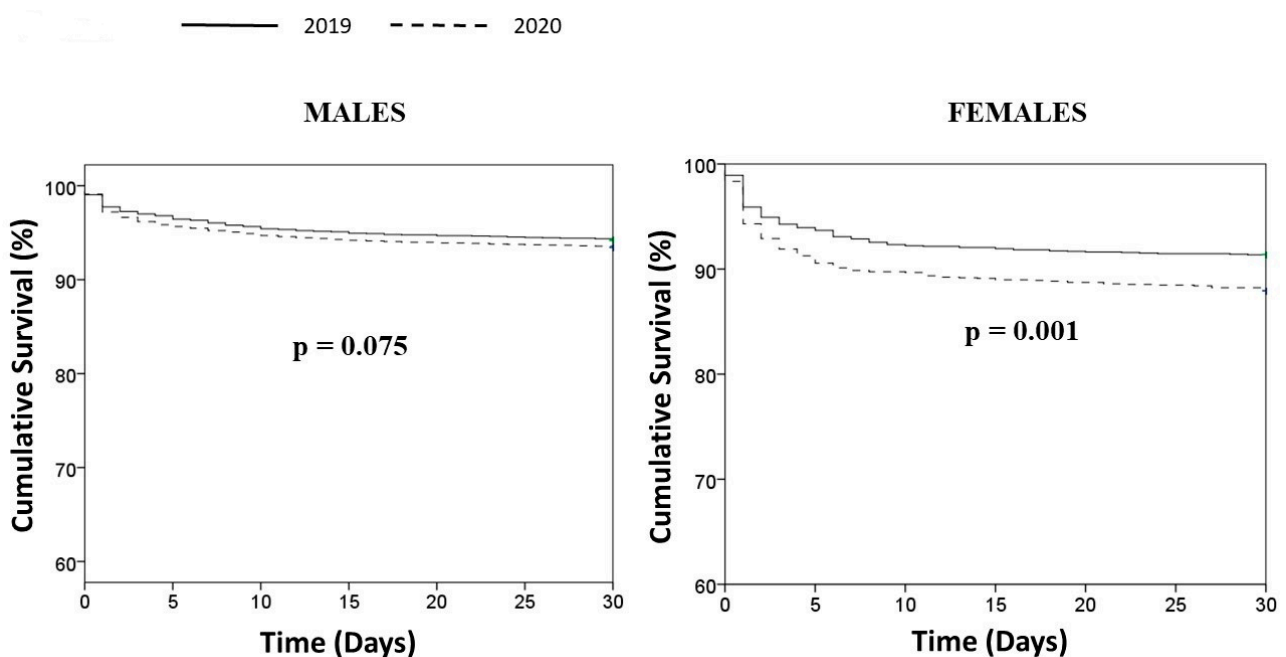


Figure 3. Kaplan–Meier survival curves of STEMI patients treated in 2019 and 2020.

7. Discussion

The ISACS-STEMI COVID-19 Registry represents the largest registry worldwide, including more than 16000 STEMI patients undergoing primary PCIs during the COVID-19 pandemic treated from March to June in both 2019 and 2020, and it is the first addressing gender-related issues of the COVID-19 pandemic on the management of STEMI. Despite no gender-related difference in the number of primary PCI procedures during the pandemic period, as well as a longer time to reperfusion observed among males, the pandemic had a remarkable impact on 30-day mortality, especially among female patients.

Female gender, in fact, represents an established major determinant of negative outcomes in the setting of STEMI. Increased rates of comorbidities, more advanced age at presentation, and frailty have been generally claimed for this higher mortality, in addition to longer time to treatment [16–18]. Indeed, more delayed presentation and atypical symptoms have been reported more frequently among women, often preventing prompt diagnosis and management, with lower rates of primary PCI procedures. In effect, De Luca et al. clearly showed in two large cohorts of STEMI patients [19,20] that prognostic differences disappeared after correction for baseline clinical and angiographic risk profiles. In fact, female gender did not emerge as an independent predictor of mortality.

During the COVID-19 pandemic, initial reports from Chinese registries [21,22] and subsequent European cohorts, including patients treated in March and April of 2019–2020 [23,24], showed a remarkable reduction in the number of acute coronary patients presenting to hospitals due to fear of the contagion. These data were subsequently confirmed in the larger ISACS-STEMI COVID-19 Registry, including patients from Europe, America, north Africa, and Asia, although with wide variability (from –20 to –70%) compared to prepandemic data [3–5,21–24]. In addition, challenges in logistics due to the saturation of ambulance transportation systems and emergency departments, the shifting of healthcare resources for the management of COVID-19 patients, and the need to establish eventual positivity before admission could certainly have further contributed to prolonged ischemia time, accounting for the higher mortality of STEMI patients during this period.

Thus, an even more severe impact of delayed reperfusion or no access to invasive strategies during the COVID-19 pandemic could be expected, especially among females [25].

Moreover, hypovitaminosis D, which has emerged as a major contributor to increased mortality and cardiovascular events, in addition to favoring the susceptibility and the complications of COVID-19 infection, has been documented more frequently among females compared to males. In fact, the anti-inflammatory and antithrombotic properties of calcitriol were suggested to contrast the pathophysiological mechanisms triggered by the SARS-CoV-2 virus, as they involve endothelial damage and thrombosis, in addition to preventing the development of atherosclerosis [26].

However, despite the expected negative effects of the pandemic among the more fragile subsets of patients, including women, an opposite tendency for enhanced mortality was documented for males experiencing COVID-19 pneumonia. An early report from China have pointed to a sex imbalance with regards to the detected cases and case fatality rates of COVID-19 [27], which was confirmed even in European countries despite more contrasting data [28]. In addition, Galloway et al. [29], who analyzed over 1000 patients acutely admitted to two London hospitals with COVID-19 and positive SARS-CoV-2 swabs, identified twelve risk factors, including male gender, diabetes mellitus, hypertension, and chronic lung disease, as predictors of critical care admission and death in people admitted to hospitals with COVID-19. Indeed, higher rates of smoking, overweight patients, pre-existing cardiovascular conditions, and other risk factors and behavioral differences could favor the occurrence of respiratory and cardiovascular complications among men compared to women, where hormonal assets generally promoted immune tolerance and were more protective against thrombotic events [30].

Moreover, increasing evidence has suggested that sex and sex hormones could affect many components of the renin-angiotensin system, including a lower expression of ACE2 in women [31,32], which has been identified as a gatekeeper for the SARS-CoV-2 infection.

Thus far, few studies have compared the impact of the COVID-19 pandemic on the treatment and prognosis of STEMI among male and female patients. De Rosa et al. recently described a greater STEMI rate of decline for women than for men (41.2% vs. 17.8%) [33], although a subsequent larger study including over 2000 patients concluded that the COVID-19 pandemic period closed the gap between men and women in ACS, with similar rates of reduction in hospitalized patients. Furthermore, many typical differences between males and females regarding ischemic heart disease presentations, including more advanced age in women and vessel distribution, were leveled [34].

Similarly, Huynh et al. observed a larger reduction in the incidence of acute myocardial infarction predominantly among women aged over 70 years [35].

The present subanalysis of the ISACS-STEMI COVID-19 Registry conducted in high-volume primary PCI centers on several continents (Europe, Latin America, southeast Asia, and north Africa) provided relevant, reliable information to this controversial debate. We found a significant reduction in the number of STEMI patients undergoing mechanical reperfusion, with no difference according to gender. However, in the subgroup analysis, we observed a relevant interaction between male gender and smoking and greater reductions in female patients for elderly and diabetic patients, consistent with other small-sized registries [33,34].

Indeed, as previously suggested, a higher prehospital mortality rate in patients with more advanced age could condition the selection of a younger population of patients accessing primary PCI facilities.

In addition, whilst in the pre-COVID-19 era the time to reperfusion was more delayed in females, in 2020 the prolongation of the time of ischemia was more evident in males, which could be because of great fear of the contagion due to media updates on their worse prognosis for COVID-19, thus preventing their presentation to hospitals.

Moreover, atypical symptoms, including dyspnoea, could occur more frequently, leading to the misclassification of a certain proportion of STEMI patients, and COVID-19 positivity was more frequent among men, identifying a subpopulation of STEMI patients with a very severe prognosis (28.8% mortality in males vs. 17.2% among females).

Nevertheless, although the longer time to treatment contributed to explaining the overall higher mortality observed during this pandemic, as compared to 2019 in both sexes, more delayed reperfusion in males did not translate into a greater risk of mortality. In fact, female patients still maintained poorer outcomes, which was confirmed even after correction for baseline differences. Higher thrombotic burden requiring larger use of intravenous antiplatelet agents, as much as increased complexity of coronary multivessel disease, could negatively affect the prognoses of these patients.

Confirming previous reports [10,11], we observed a significantly higher impact on the mortality of SARS-CoV-2 positivity in male compared to female patients. Therefore, COVID-19 infection per se could not explain the negative global impact of the pandemic on outcomes more remarkably observed among females rather than male patients.

Nevertheless, the gender disparities observed during the COVID-19 pandemic, as well as the changes in the patterns of presentation and the management of primary PCI therapies, emphasize the need to understand the impact of sex on the incidence and pathophysiology of the disease in order to tailor treatment according to sex and gender [32].

In light of the ongoing large vaccine campaign worldwide and the developments in pharmacological drugs for the management of the infection, which have been suggested to display potentially different efficacies and side effects according to gender, based on available data, it is extremely important that scientific societies and health authorities promote public campaigns in order to highlight the importance of the prompt recognition and response to characteristic symptoms of acute myocardial infarction to positively impact the outcomes, especially among more frail categories of patients, such as those of female gender.

8. Limitations

As previously described [9], this study was limited by its retrospective design. It was conducted during a challenging pandemic emergency, and we expected to encounter missing data. Nevertheless, our main data analysis and conclusions were based on counts and, therefore, the overall cohort of patients was included. Furthermore, even in the analysis based on the full individual patient data, this limitation and the potential risk of type-II error was largely overcome by the high rate of complete cases (>95%) and the high statistical power due to the size of the study population. Even though in the present registry of patients undergoing mechanical reperfusion we did not find any difference in out-of-hospital cardiac arrest, we could not exclude that the reduction in STEMI patients observed in 2020 may partly result from higher rates of prehospital death due to longer delays to first medical contact, as described during the COVID-19 pandemic [9].

Finally, we could not provide any mechanistic insights to support our findings. Therefore, future additional studies are certainly needed to further investigate and unveil the potential pathophysiological mechanisms that may contribute to explaining our findings.

9. Conclusions

The COVID-19 pandemic had a significant impact on the treatment of patients with STEMI, with a 16% reduction in PPCI procedures similarly observed in both genders. Even though the pandemic impacted ischemia time more significantly among males, as well as SARS-CoV-2 positivity on survival, we observed significantly increased in-hospital and 30-day mortality rates during the pandemic only among females.

Therefore, gender disparities in the treatment and outcomes of STEMI patients undergoing primary PCIs are not yet overcome, and efforts should be made in order to fill in the prognostic gap.

Supplementary Materials: The following supporting information can be downloaded at: <https://www.mdpi.com/article/10.3390/jcm12030896/s1>, Figure S1: Results of Poisson regression analysis in the male population to study the relationship between the number of primary PCI per million of male residents/year in 2020 vs the number in 2019; Figure S2: This graph shows the results of Poisson regression analysis in the female population to study the relationship between the number of primary PCI per million of female residents/year in 2020 vs the number in 2019; Figure S3: This graph shows in the male population the absence of significant relationship between the Incidence Rate Ratio of each centre (on the log-scaled axis) and the number of national COVID-19 cases per million of male residents. Blue lines refer to the predicted values (solid line) from Poisson model, together with 95% prediction intervals (dashed lines). Red line refers to the situation of no COVID-19 effect (intercept term); Figure S4: This graph shows in the female population the absence of significant relationship between the Incidence Rate Ratio of each centre (on the log-scaled axis) and the number of national COVID-19 cases per million of female residents. Blue lines refer to the predicted values (solid line) from Poisson model, together with 95% prediction intervals (dashed lines). Red line refers to the situation of no COVID-19 effect (intercept term); Figure S5: This graph shows in the male population the absence of significant relationship between the Incidence Rate Ratio of each centre (on the log-scaled axis) and the number of national COVID-19 related deaths per million of male residents. Blue lines refer to the predicted values (solid line) from Poisson model, together with 95% prediction intervals (dashed lines). Red line refers to the situation of no COVID-19 effect (intercept term); Figure S6: This graph shows in the female population the absence of significant relationship between the Incidence Rate Ratio of each centre (on the log-scaled axis) and the number of national COVID-19 related deaths per million of female residents. Blue lines refer to the predicted values (solid line) from Poisson model, together with 95% prediction intervals (dashed lines). Red line refers to the situation of no COVID-19 effect (intercept term); Figure S7: Box-and-whisker plot showing the number of male STEMI patients treated by mechanical reperfusion per million of male residents/year in 2019 and 2020 across 4 continents; Figure S8: Forest plots of the incidence rate ratio in the male population on the log-scaled axis with 95% confidence interval across each continent (1: Europe, 2: Latin America, 3: South East Asia, 4: North Africa); Figure S9: Box-and-whisker plot showing the number of female STEMI patients treated by mechanical reperfusion per million of female residents/year in 2019 and

2020 across 4 continents; Figure S10: Forest plots of the incidence rate ratio in the female population on the log-scaled axis with 95% confidence interval across each continent (1: Europe, 2: Latin America, 3: South East Asia, 4: North Africa); Figure S11: Box-and-whisker plot showing the number of male STEMI patients treated by mechanical reperfusion per million of male residents/year in 2019 and 2020 (left graph) and the number of female STEMI patients treated by mechanical reperfusion per million of female residents/year in 2019 and 2020 (right graph) according to age (> or <75 years); Figure S12: Box-and-whisker plot showing the number of male STEMI patients treated by mechanical reperfusion per million of male residents/year in 2019 and 2020 (left graph) and the number of female STEMI patients treated by mechanical reperfusion per million of female residents/year in 2019 and 2020 (right graph) according to hypertension; Figure S13: Box-and-whisker plot showing the number of male STEMI patients treated by mechanical reperfusion per million of male residents/year in 2019 and 2020 (left graph) and the number of female STEMI patients treated by mechanical reperfusion per million of female residents/year in 2019 and 2020 (right graph) according to diabetes; Figure S14: Box-and-whisker plot showing the number of male STEMI patients treated by mechanical reperfusion per million of male residents/year in 2019 and 2020 (left graph) and the number of female STEMI patients treated by mechanical reperfusion per million of female residents/year in 2019 and 2020 (right graph) according to smoking; Figure S15: Forest plots of the incidence rate ratio in the male population on the log-scaled axis with 95% confidence interval according to major risk factors (Diabetes, Hypertension, Age and Smoking); Figure S16: Forest plots of the incidence rate ratio in the female population on the log-scaled axis with 95% confidence interval according to major risk factors (Diabetes, Hypertension, Age and Smoking); Table S1: Characteristics of participating centers; Table S2: Incidence Rate Ratio (IRR) and 95% Confidence Interval in each continent and according to the type of institution.

Author Contributions: Study design, G.D.L., G.P., E.K. and M.V.; data collection, all authors; data verification, M.N. and M.V.; data analysis, G.C.; initial draft, G.D.L.; final revision and approval of the manuscript, all authors. All authors have read and agreed to the published version of the manuscript.

Funding: This research received no external funding.

Institutional Review Board Statement: The study is a retrospective registry with anonymized data collection; therefore, formal approval from an ethical committee was deemed not necessary. However, it was approved by the Ethical Committee of AOU Maggiore della Carità, Novara, Italy. The need to notify or ask for approval from local ethical committees was left to each investigator's discretion according to local and national regulations.

Informed Consent Statement: Patients' informed consent was obtained when applicable.

Data Availability Statement: Data are available upon request submitted to the steering committee for six months after publication.

Acknowledgments: The study was promoted by Eastern Piedmont University, Novara, Italy.

Conflicts of Interest: The authors declare no conflict of interest concerning the submitted study.

Abbreviations

Percutaneous coronary intervention	(PCI)
ST-segment elevation myocardial infarction	(STEMI)
Door-to-balloon time	(DTB)
Incidence rate ratio	(IRR)
Acute coronary syndrome	(ACS)
Drug-eluting stent	(DES)
Renin-angiotensin system inhibitors	(RASIs)

References

1. Axenhus, M.; Schedin-Weiss, S.; Winblad, B.; Wimo, A. Changes in mortality trends amongst common diseases during the COVID-19 pandemic in Sweden. *Scand. J. Public Health* **2021**, *50*, 748–755. [CrossRef] [PubMed]
2. Coronavirus (COVID-19) Deaths. Available online: <https://ourworldindata.org/covid-deaths> (accessed on 31 January 2022).
3. Garcia, S.; Albaghdadi, M.S.; Meraj, P.M.; Schmidt, C.; Garberich, R.; Jaffer, F.A.; Dixon, S.; Rade, J.J.; Tannenbaum, M.; Chambers, J.; et al. Reduction in ST-Segment Elevation Cardiac Catheterization Laboratory Activations in the United States during COVID-19 Pandemic. *J. Am. Coll. Cardiol.* **2020**, *75*, 2871–2872. [CrossRef]

4. Tam, C.F.; Cheung, K.S.; Lam, S.; Wong, A.; Yung, A.; Sze, M.; Lam, Y.M.; Chan, C.; Tsang, T.C.; Tsui, M.; et al. Impact of Coronavirus Disease 2019 (COVID-19) Outbreak on ST-Segment-Elevation Myocardial Infarction Care in Hong Kong, China. *Circ. Cardiovasc Qual. Outcomes* **2020**, *13*, e006631. [[CrossRef](#)] [[PubMed](#)]
5. Piccolo, R.; Bruzzese, D.; Mauro, C.; Aloia, A.; Baldi, C.; Boccalatte, M.; Bottiglieri, G.; Briguori, C.; Caiazzo, G.; Calabrò, P.; et al. Population Trends in Rates of Percutaneous Coronary Revascularization for Acute Coronary Syndromes Associated with the COVID-19. *Outbreak Circ.* **2020**, *141*, 2035–2037. [[CrossRef](#)] [[PubMed](#)]
6. Stefanini, G.G.; Montorfano, M.; Trabattoni, D.; Andreini, D.; Ferrante, G.; Ancona, M.; Metra, M.; Curello, S.; Maffeo, D.; Pero, G.; et al. ST-Elevation Myocardial Infarction in Patients with COVID-19: Clinical and Angiographic. *Outcomes Circ.* **2020**, *141*, 2113–2116. [[CrossRef](#)]
7. De Luca, G.; Suryapranata, H.; Ottervanger, J.P.; Antman, E.M. Time delay to treatment and mortality in primary angioplasty for acute myocardial infarction: Every minute of delay counts. *Circulation* **2004**, *109*, 1223–1225. [[CrossRef](#)]
8. Jain, V.; Gupta, K.; Bhatia, K.; Bansal, A.; Arora, S.; Khandelwal, A.K.; Rosenberg, J.R.; Levisay, J.P.; Tommaso, C.L.; Ricciardi, M.J.; et al. Management of STEMI during the COVID-19 pandemic: Lessons learned in 2020 to prepare for 2021. *Trends Cardiovasc. Med.* **2021**, *31*, 135–140. [[CrossRef](#)] [[PubMed](#)]
9. De Luca, G.; Verdoia, M.; Cercek, M.; Jensen, L.O.; Vavlukis, M.; Calmac, L.; Johnson, T.; Ferrer, G.R.; Ganyukov, V.; Wojakowski, W.; et al. Impact of COVID-19 Pandemic on Mechanical Reperfusion for Patients With STEMI. *J. Am. Coll. Cardiol.* **2020**, *76*, 2321–2330. [[CrossRef](#)]
10. Wang, D.; Hu, B.; Hu, C.; Zhu, F.; Liu, X.; Zhang, J.; Wang, B.; Xiang, H.; Cheng, Z.; Xiong, Y.; et al. Clinical characteristics of 138 hospitalized patients with 2019 novel coronavirus-infected pneumonia in Wuhan, China. *JAMA* **2020**, *323*, 1061–1069. [[CrossRef](#)]
11. Cai, H. Sex difference and smoking predisposition in patients with COVID-19. *Lancet Respir Med.* **2020**, *8*, e20. [[CrossRef](#)]
12. Ferrante, G.; Barbieri, L.; Sponzilli, C.; Lucreziotti, S.; Salerno Uriarte, D.; Centola, M.; Verdoia, M.; Carugo, S. Predictors of Mortality and Long-Term Outcome in Patients with Anterior STEMI: Results from a Single Center Study. *J. Clin. Med.* **2021**, *10*, 5634. [[CrossRef](#)] [[PubMed](#)]
13. Verdoia, M.; Suryapranata, H.; Damen, S.; Camaro, C.; Benit, E.; Barbieri, L.; Rasoul, S.; Liew, H.B.; Polad, J.; Ahmad, W.A.W.; et al. Gender differences with short-term vs 12 months dual antiplatelet therapy in patients with acute coronary syndrome treated with the COMBO dual therapy stent: 2-years follow-up results of the REDUCE trial. *J. Thromb. Thrombolysis* **2021**, *52*, 797–807. [[CrossRef](#)] [[PubMed](#)]
14. Silverio, A.; Di Maio, M.; Citro, R.; Esposito, L.; Iuliano, G.; Bellino, M.; Baldi, C.; De Luca, G.; Ciccarelli, M.; Vecchione, C.; et al. Cardiovascular risk factors and mortality in hospitalized patients with COVID-19: Systematic review and meta-analysis of 45 studies and 18,300 patients. *BMC Cardiovasc. Disord.* **2021**, *21*, 23. [[CrossRef](#)] [[PubMed](#)]
15. Gelman, A.; Hill, J. *Data Analysis Using Regression and Multilevel/Hierarchical Models*; Cambridge University Press: New York, NY, USA, 2007.
16. De Luca, G.; Suryapranata, H.; Dambrink, J.H.; Ottervanger, J.P.; van 't Hof, A.W.; Zijlstra, F.; Hoorntje, J.C.; Gosselink, A.T.; de Boer, M.J. Sex-related differences in outcome after ST-segment elevation myocardial infarction treated by primary angioplasty: Data from the Zwolle Myocardial Infarction study. *Am. Heart J.* **2004**, *148*, 852–856. [[CrossRef](#)]
17. Paradossi, U.; Taglieri, N.; Massarelli, G.; Palmieri, C.; De Caterina, A.R.; Bruno, A.G.; Taddei, A.; Nardi, E.; Ghetti, G.; Palmerini, T.; et al. Female gender and mortality in ST-segment-elevation myocardial infarction treated with primary PCI. *J. Cardiovasc. Med.* **2022**, *23*, 234–241. [[CrossRef](#)]
18. De Luca, G.; Parodi, G.; Scigrà, R.; Bellandi, B.; Verdoia, M.; Vergara, R.; Migliorini, A.; Valenti, R.; Antonucci, D. Relation of gender to infarct size in patients with ST-segment elevation myocardial infarction undergoing primary angioplasty. *Am. J. Cardiol.* **2013**, *111*, 936–940. [[CrossRef](#)]
19. De Luca, G.; Gibson, C.M.; Gyöngyösi, M.; Zeymer, U.; Dudek, D.; Arntz, H.R.; Bellandi, F.; Maioli, M.; Noc, M.; Zorman, S.; et al. Gender-related differences in outcome after ST-segment elevation myocardial infarction treated by primary angioplasty and glycoprotein IIb/IIIa inhibitors: Insights from the EGYPT cooperation. *J. Thromb. Thrombolysis* **2010**, *30*, 342–346. [[CrossRef](#)]
20. De Luca, G.; Verdoia, M.; Dirksen, M.T.; Spaulding, C.; Kelbæk, H.; Schalij, M.; Thuesen, L.; Hoeven Bv Vink, M.A.; Kaiser, C.; Musto, C.; et al. Gender-related differences in outcome after BMS or DES implantation in patients with ST-segment elevation myocardial infarction treated by primary angioplasty: Insights from the DESERT cooperation. *Atherosclerosis* **2013**, *230*, 3056. [[CrossRef](#)]
21. Chew, N.W.; Sia, C.H.; Wee, H.L.; Benedict, L.J.; Rastogi, S.; Kojodjojo, P.; Chor, W.P.D.; Leong, B.S.; Koh, B.C.; Tam, H.; et al. Impact of the COVID-19 Pandemic on Door-to-Balloon Time for Primary Percutaneous Coronary Intervention—Results From the Singapore Western STEMI Network. *Circ. J.* **2021**, *85*, 139–149. [[CrossRef](#)]
22. Xiang, D.; Xiang, X.; Zhang, W.; Yi, S.; Zhang, J.; Gu, X.; Xu, Y.; Huang, K.; Su, X.; Yu, B.; et al. Management and Outcomes of Patients With STEMI During the COVID-19 Pandemic in China. *J. Am. Coll. Cardiol.* **2020**, *76*, 1318–1324. [[CrossRef](#)]
23. De Luca, G.; Cercek, M.; Jensen, L.O.; Vavlukis, M.; Calmac, L.; Johnson, T.; Roura IFerrer, G.; Ganyukov, V.; Wojakowski, W.; von Birgelen, C.; et al. Impact of COVID-19 pandemic and diabetes on mechanical reperfusion in patients with STEMI: Insights from the ISACS STEMI COVID 19 Registry. *Cardiovasc. Diabetol.* **2020**, *19*, 215. [[CrossRef](#)] [[PubMed](#)]
24. Rangé, G.; Hakim, R.; Beygui, F.; Angoulvant, D.; Marcollet, P.; Godin, M.; Deballon, R.; Bonnet, P.; Fichaux, O.; Barbey, C.; et al. Incidence, delays, and outcomes of STEMI during COVID-19 outbreak: Analysis from the France PCI registry. *J. Am. Coll. Emerg. Physicians Open* **2020**, *1*, 1168–1176. [[CrossRef](#)] [[PubMed](#)]

25. Meisel, S.R.; Tal, O.; Kobo, O.; Saada, M.; Nashed, H.; Fanne, R.A.; Alcalai, R.; Amsalem, N.; Levi, Y.; Mohsen, J.; et al. Impact of the Admission Pathway on the Gender-Related Mortality of Patients With ST-Elevation Myocardial Infarction. *Am. J. Cardiol.* **2022**, *166*, 9–17. [[CrossRef](#)] [[PubMed](#)]
26. Verdoia, M.; Vighione, F.; Boggio, A.; Stefani, D.; Panarotto, N.; Malabaila, A.; Rolla, R.; Soldà, P.L.; De Luca, G. Novara Atherosclerosis Study Group (NAS). Vitamin D deficiency is associated with impaired reperfusion in STEMI patients undergoing primary percutaneous coronary intervention. *Vasc. Pharmacol.* **2021**, *140*, 106897. [[CrossRef](#)]
27. Mo, P.; Xing, Y.; Xiao, Y.; Deng, L.; Zhao, Q.; Wang, H.; Xiong, Y.; Cheng, Z.; Gao, S.; Liang, K.; et al. Clinical characteristics of refractory COVID-19 pneumonia in Wuhan, China. *Clin. Infect. Dis.* **2021**, *73*, e4208–e4213. [[CrossRef](#)]
28. Gebhard, C.; Regitz-Zagrosek, V.; Neuhauser, H.K.; Morgan, R.; Klein, S.L. Impact of sex and gender on COVID-19 outcomes in Europe. *Biol. Sex. Differ.* **2020**, *11*, 29. [[CrossRef](#)]
29. Galloway, J.B.; Norton, S.; Barker, R.D.; Brookes, A.; Carey, I.; Clarke, B.D.; Jina, R.; Reid, C.; Russell, M.D.; Sneep, R.; et al. A clinical risk score to identify patients with COVID-19 at high risk of critical care admission or death: An observational cohort study. *J. Infect.* **2020**, *81*, 282–288. [[CrossRef](#)]
30. Megiorni, F.; Pontecorvi, P.; Gerini, G.; Anastasiadou, E.; Marchese, C.; Ceccarelli, S. Sex-Related Factors in Cardiovascular Complications Associated to COVID-19; Sex differences underlying preexisting cardiovascular disease and cardiovascular injury in COVID-19. *Biomolecules* **2021**, *12*, 21. [[CrossRef](#)]
31. Fischer, M.; Baessler, A.; Schunkert, H. Renin angiotensin system and gender differences in the cardiovascular system. *Cardiovasc. Res.* **2002**, *53*, 672–677. [[CrossRef](#)]
32. Chappell, M.C.; Marshall, A.C.; Alzayadneh, E.M.; Shaltout, H.A.; Diz, D.I. Update on the angiotensin converting enzyme 2-angiotensin (1-7)-Mas receptor axis: Fetal programming, sex differences, and intracellular pathways. *Front. Endocrinol.* **2014**, *4*, 201. [[CrossRef](#)]
33. De Rosa, S.; Spaccarotella, C.; Basso, C.; Calabrò, M.P.; Curcio, A.; Filardi, P.P.; Mancone, M.; Mercurio, G.; Muscoli, S.; Nodari, S.; et al. Reduction of hospitalizations for myocardial infarction in Italy in the COVID-19 era. Società Italiana di Cardiologia and the CCU Academy investigators group. *Eur. Heart J.* **2020**, *41*, 2083–2088. [[CrossRef](#)] [[PubMed](#)]
34. Barbero, U.; Moncalvo, C.; Trabattoni, D.; Pavani, M.; Amoroso, G.R.; Bocchino, P.P.; Giachet, A.T.; Saglietto, A.; Monticone, S.; Secco, G.G.; et al. Gender differences in acute coronary syndromes patterns during the COVID-19 outbreak. *Am. J. Cardiovasc. Dis.* **2020**, *10*, 506–513. [[PubMed](#)]
35. Huynh, J.; Barmano, N.; Karlsson, J.E.; Stomby, A. Sex and age differences in the incidence of acute myocardial infarction during the COVID-19 pandemic in a Swedish health-care region without lockdown: A retrospective cohort study. *Lancet* **2021**, *2*, e283–e289. [[CrossRef](#)] [[PubMed](#)]

Disclaimer/Publisher’s Note: The statements, opinions and data contained in all publications are solely those of the individual author(s) and contributor(s) and not of MDPI and/or the editor(s). MDPI and/or the editor(s) disclaim responsibility for any injury to people or property resulting from any ideas, methods, instructions or products referred to in the content.