

# Sustavni pregledi: snaga i ograničenja

---

Trkulja, Vladimir

Conference presentation / Izlaganje na skupu

Permanent link / Trajna poveznica: <https://um.nsk.hr/um:nbn:hr:105:174387>

Rights / Prava: [In copyright](#) / [Zaštićeno autorskim pravom.](#)

Download date / Datum preuzimanja: **2024-04-24**



Repository / Repozitorij:

[Dr Med - University of Zagreb School of Medicine  
Digital Repository](#)





1917–2017  
100 godina Medicinskog  
fakulteta Sveučilišta  
u Zagrebu

Vladimir Trkulja

Zavod za farmakologiju / Department of pharmacology

**Sustavni pregledi: snaga i ograničenja**

**Systematic reviews: strengths and limitations**



1917 – 2017  
100 godina Medicinskog  
fakulteta Sveučilišta  
u Zagrebu

PRIMUM  
NON  
NOCE  
RE

A. Basic terminology

**B. The underlying logic – reasons to do it**

C. The potential (strengths)

**D. Limitations and misconceptions**

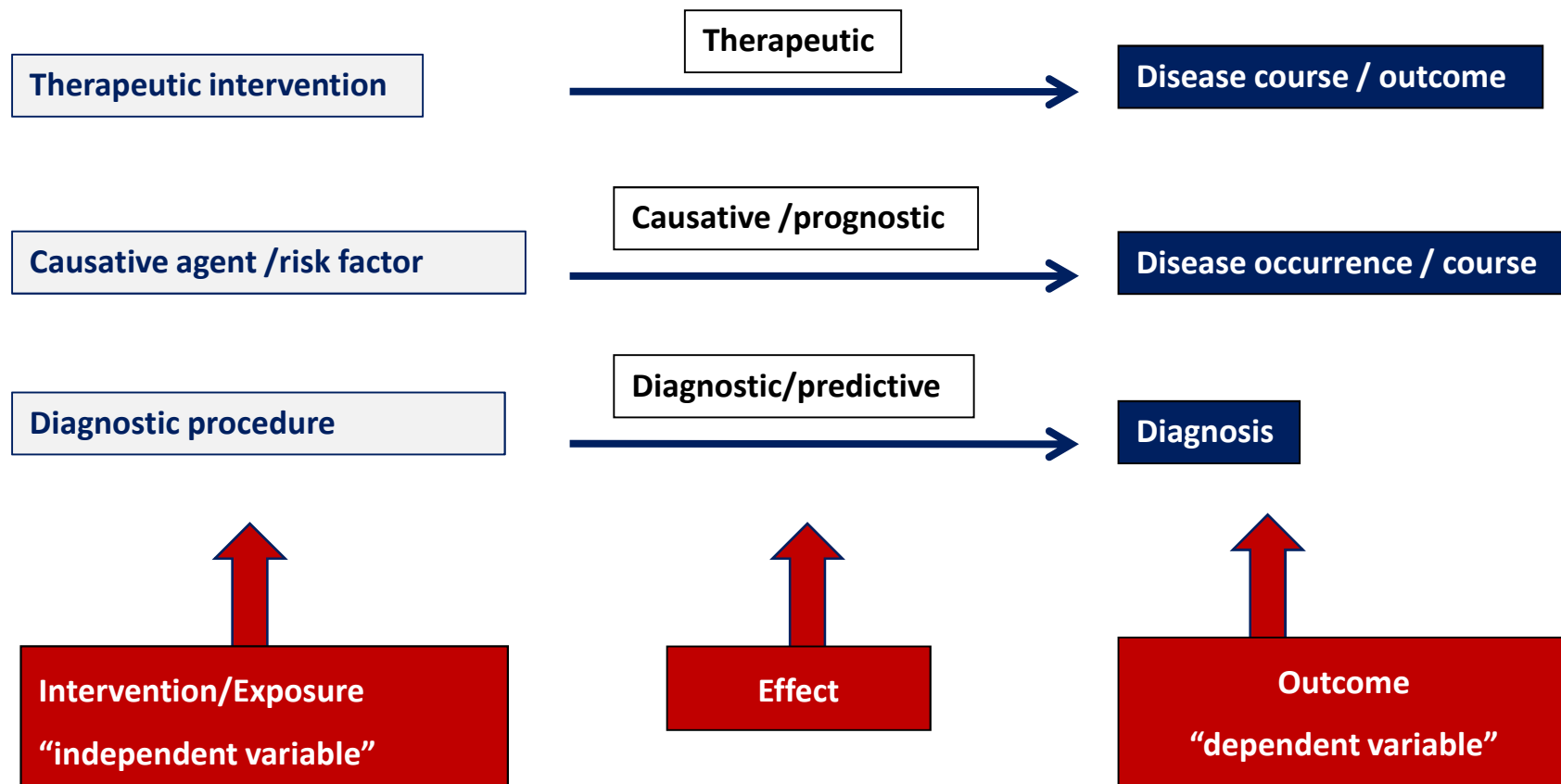
## A. Basic terminology



1917 – 2017  
100 godina Medicinskog  
fakulteta Sveučilišta  
u Zagrebu

PRIMUM  
NON  
NOCE  
RE

The entire (bio)medical research is about detecting/defining 3 relationships:



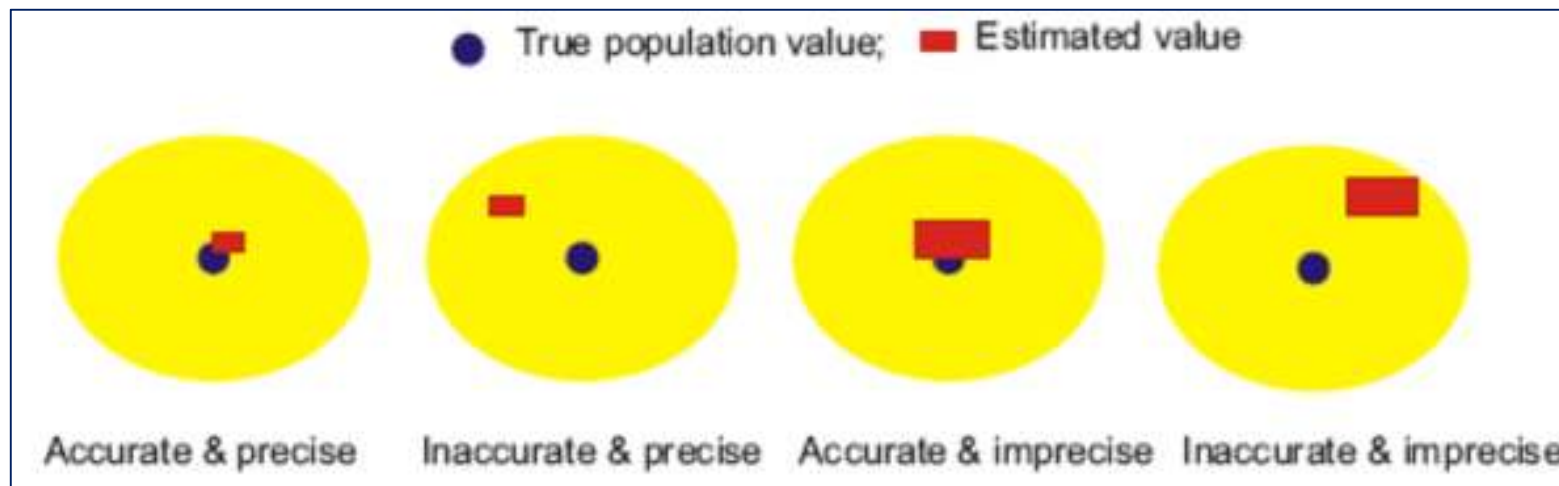
## A. Basic terminology



1917–2017  
100 godina Medicinskog  
fakulteta Sveučilišta  
u Zagrebu

PRIMUM  
NON  
NOCE  
RE

It is about estimation of the physical world that surrounds us, or in other words  
- about estimating the “population value”





So that we could make *population-wise* statements/claims that govern daily medical practice:

- ❖ Treatment T cures disease D – hence, we should use it to treat the patients
- ❖ These (....) factors contribute to occurrence of this specific disease – hence we should preventively intervene
- ❖ This diagnostic test is the most reliable one for this specific condition – hence, this should be our first choice during the diagnostic process

## A. Basic terminology

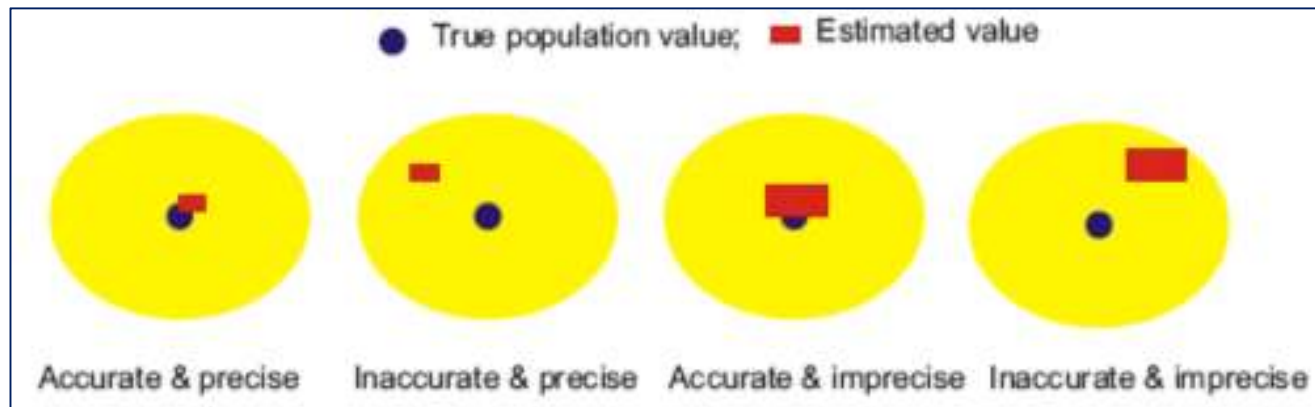


1917–2017  
100 godina Medicinskog  
fakulteta Sveučilišta  
u Zagrebu

PRIMUM  
NON  
NOCE  
RE

Clearly, in order to “*do more good than harm*” (Archie Cochrane -☺-):

- ❖ These estimates need to be ACCURATE – i.e., ON TARGET
- ❖ These estimates need to be (preferably) – PRECISE



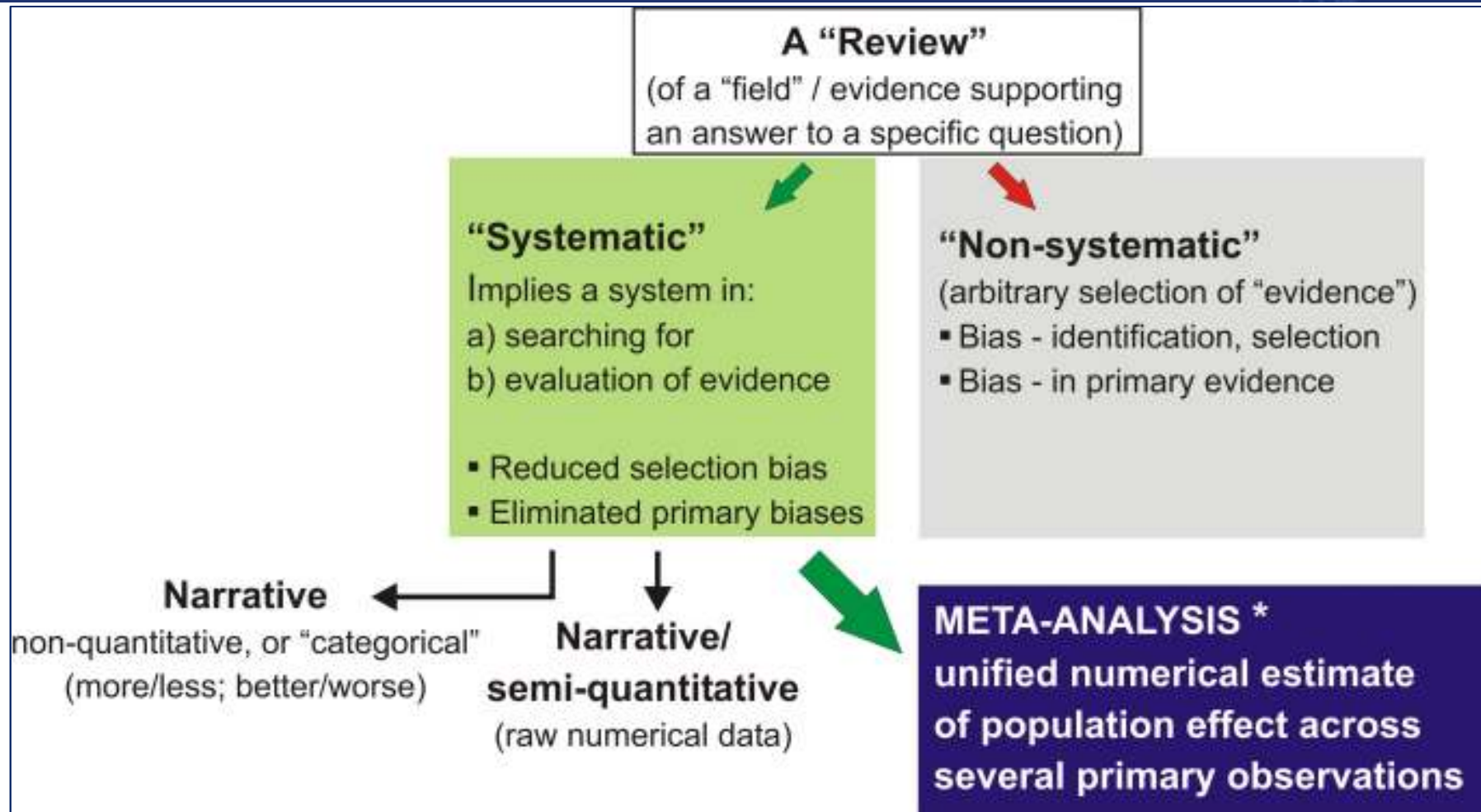
- ❖ INACCURATE (off-target) or BIASED estimates – RESULT IN **HARM**
- ❖ IMPRECISE estimates – are **inconclusive** (uninformative)

## A. Basic terminology



1917 – 2017  
100 godina Medicinskog  
fakulteta Sveučilišta  
u Zagrebu

PRIMUM  
NON  
NOCE  
RE



\* **Glass GV.** Primary, secondary and *meta-analysis* of research. *Educat Res* 1976; 5:3-8.





1917 – 2017  
100 godina Medicinskog  
fakulteta Sveučilišta  
u Zagrebu

PRIMUM  
NON  
NOCE  
RE

**B. The underlying logic – reasons to do it**

C. The potential (strengths)

D. Limitations and misconceptions

## B. Why do it?



1917 – 2017  
100 godina Medicinskog  
fakulteta Sveučilišta  
u Zagrebu

PRIMUM  
NON  
NOCE  
RE

Lord Rayleigh (in 1884)\*

*“If, as it is sometimes supposed, science consisted in nothing but the laborious accumulation of facts, it would soon come to a standstill, crushed, as it were, under its own weight. The suggestion of a new idea, or the detection of a law, supersedes much that has previously been a burden on the memory, and by introducing order and coherence facilitates the retention of the remainder in an available form. ..Two processes are thus at work side by side...The work which deserves, but I am afraid does not always receive, the most credit is that in which discovery and explanation go hand in hand, in which not only are new facts presented, but their relation to old ones is pointed out.”*

\* Systematic reviews in Health Care; meta-analysis in context. 2<sup>nd</sup> edition, Egger, Davy Smith, Altman (eds), BMJ Books 2001

## B. Why do it?



1917–2017  
100 godina Medicinskog  
fakulteta Sveučilišta  
u Zagrebu

PRIMUM  
NON  
NOCE  
RE

Karl Pearson (in 1904)\*

### REPORT ON CERTAIN ENTERIC FEVER INOCULATION STATISTICS.

PROVIDED BY LIEUTENANT-COLONEL R. J. S. SIMPSON, C.M.G.,  
R.A.M.C.

By KARL PEARSON, F.R.S.,  
Professor of Applied Mathematics, University College, London.

(why he jointly analyzed data from several studies on the preventive effect of serum inoculation against enteric fever)

*“Many of the groups....are far too small to allow of any **definite opinion** being formed at all, having regard to the size of the **probable error.**”*

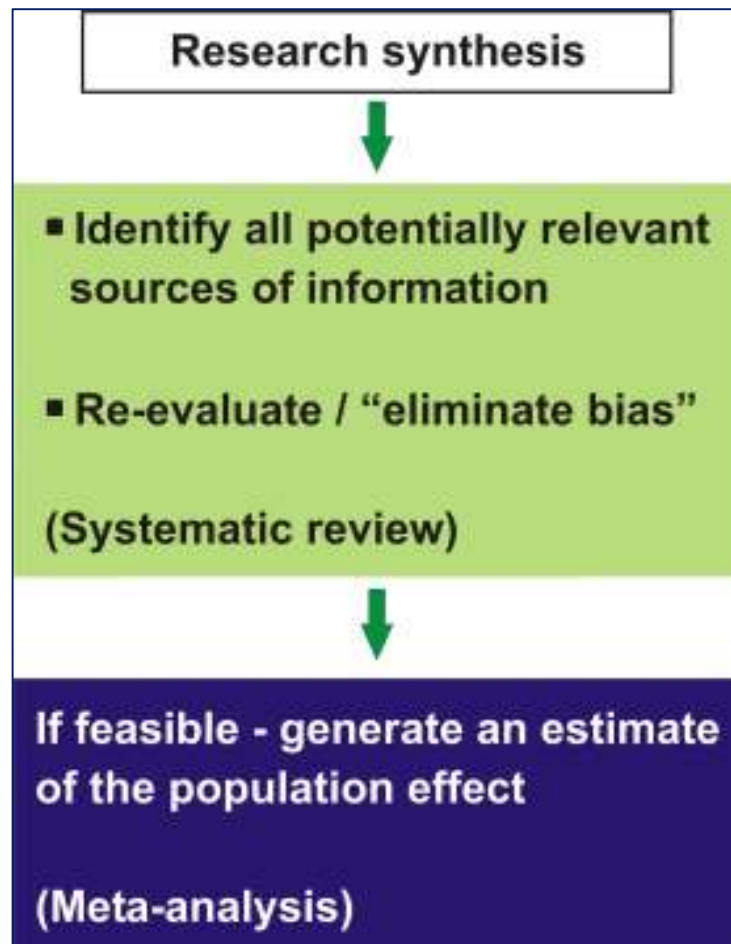
\* BMJ 1904; 3:1243-1246.

## B. Why do it?



1917 – 2017  
100 godina Medicinskog  
fakulteta Sveučilišta  
u Zagrebu

PRIMUM  
NON  
NOCE  
RE



### Why?

- ❖ To generate more **ACCURATE** (unbiased) estimates
- ❖ To generate more **PRECISE** estimates
- ❖ To see “where we are and what to do next”



1917 – 2017  
100 godina Medicinskog  
fakulteta Sveučilišta  
u Zagrebu

PRIMUM  
NON  
NOCE  
RE

C. The potential (strengths)

D. Limitations and misconceptions



- ❖ *Legendre* (1805) and *Gauss* (1809) **combined data** from different observatories to estimate the orbit of comets and to determine meridian arcs in geodesy\*
- ❖ *Birge* (1932) **combined data** from different experiments to define fundamental constants in physics\*
- ❖ *Cochrane* (1937) **combined data** from different experiments in agriculture (fertilizers)\*
- ❖ **Combined data** – ecological studies, market research, industry/technology\*

\* Hartung, Knapp, Sinha. Statistical meta-analysis with applications. Wiley 2008.

## C. Potential



1917–2017  
100 godina Medicinskog  
fakulteta Sveučilišta  
u Zagrebu

PRIMUM  
NON  
NOCE  
RE

Increased precision – detect an effect not otherwise obvious (a simple example)





1917 – 2017  
100 godina Medicinskog  
fakulteta Sveučilišta  
u Zagrebu

PRIMUM  
NON  
NOCE  
RE

Increased precision – detect an effect not otherwise obvious\*

- ❖ A narrative review in BMJ in 1981 concluded about beta-blockers after myocardial infarction

*“Thus, despite claims that they reduce arrhythmias, cardiac work, and infarct size, we still have no clear evidence that beta-blockers improve long-term survival after infarction despite almost 20 years of clinical trials”*

\* Systematic reviews in Health Care; meta-analysis in context. 2<sup>nd</sup> edition, Egger, Davy Smith, Altman (eds), BMJ Books 2001



## C. Potential

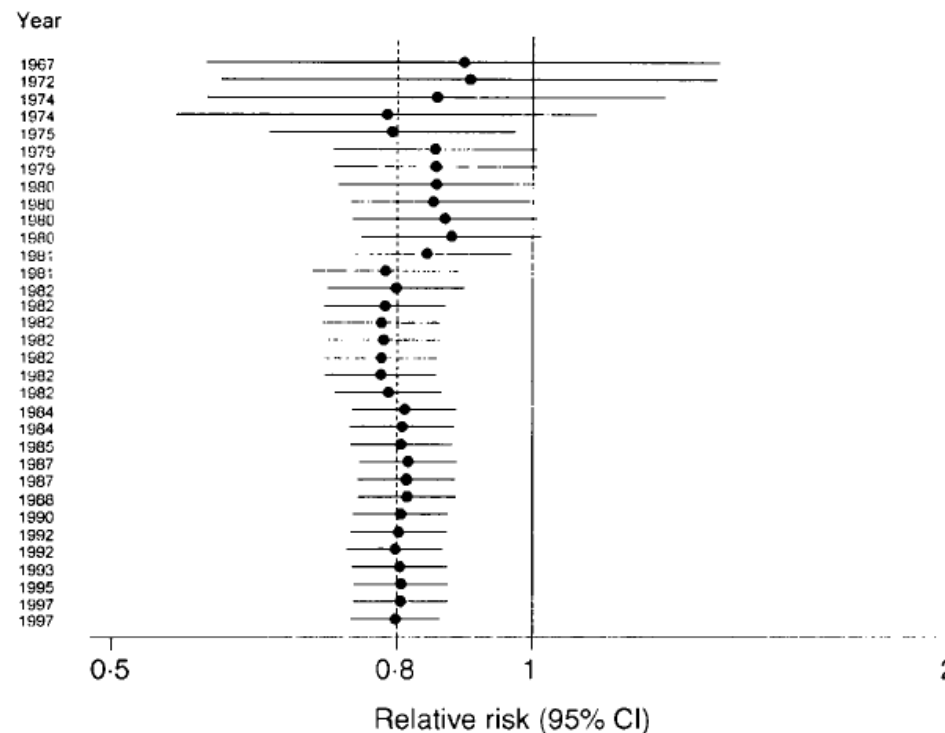


1917–2017  
100 godina Medicinskog  
fakulteta Sveučilišta  
u Zagrebu

PRIMUM  
NON  
NOCE  
RE

Increased precision – detect an effect not otherwise obvious\*

- ❖ And actually, had anyone performed meta-analysis in 1981 – it would have been OBVIOUS that beta-blockers were effective



\* Systematic reviews in Health Care; meta-analysis in context. 2<sup>nd</sup> edition, Egger, Davy Smith, Altman (eds), BMJ Books 2001



Classical examples of **detection of otherwise not obvious effects** through systematic reviews/meta-analysis that dramatically changed medical practice or health care policies

- ❖ Efficacy of *secondary prevention of arterial thrombotic incidents* (stroke, AMI) with antiplatelets (in 1988; RCTs, individual patient data meta-analysis)
- ❖ Efficacy of *streptokinase in reducing AMI mortality* (in 1992; RCTs)
- ❖ Use of *antenatal corticosteroids to accelerate fetal lung maturation* in women at risk of preterm birth (in 2003; RCTs)
- ❖ Passive smoking *increases the risk of lung cancer* (in 1990; observational studies)



1917 – 2017  
100 godina Medicinskog  
fakulteta Sveučilišta  
u Zagrebu

PRIMUM  
NON  
NOCE  
RE

## D. Limitations and misconceptions

## D. Limitations & misconceptions



1917 – 2017  
100 godina Medicinskog  
fakulteta Sveučilišta  
u Zagrebu

PRIMUM  
NON  
NOCE  
RE

1. *Systematic reviews/meta-analyses are not “true research”, rather a “parasitical work” by which some take the advantage from a “true work” of others*

- ❖ Critics should go back to 1880s and listen what Lord Rayleigh had to say (-☺-)
- ❖ SR/MA have all the elements of (biomedical) research:
  - A well-defined research question
  - Data acquisition
  - Data analysis
  - And interpretation
- ❖ Examples demonstrate how consideration of (filtered) evidence could be enlightening

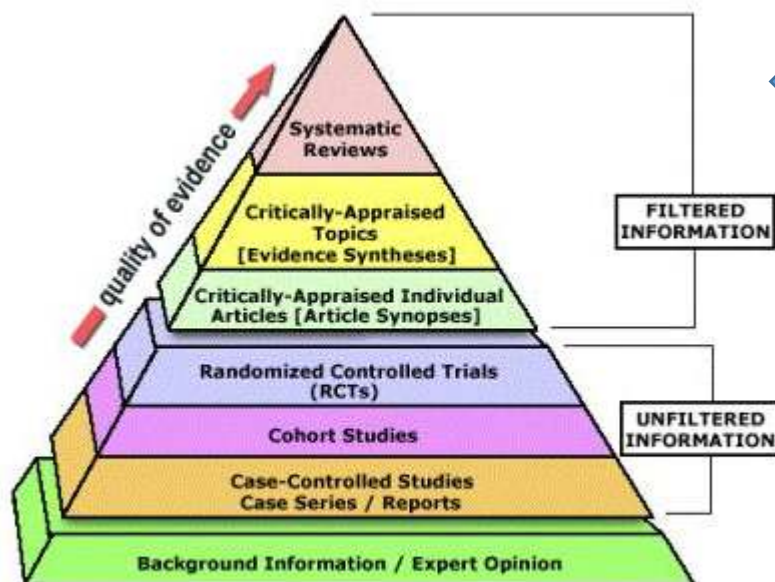
## D. Limitations & misconceptions



1917 – 2017  
100 godina Medicinskog  
fakulteta Sveučilišta  
u Zagrebu

PRIMUM  
NON  
NOCE  
RE

2. *Whatever comes from a systematic review/meta-analysis “must be accurate” and is undisputable (i.e., a “top level evidence”)*



EBM Pyramid and EBM Page Generator, © 2006 Trustees of Dartmouth College and Yale University.  
All Rights Reserved. Produced by Jan Glaser, David Izzo, Kame Ojima and Lei Wang.



Indeed, we have placed SR/MA at the top of the evidence-base pyramid

## D. Limitations & misconceptions



1917 – 2017  
100 godina Medicinskog  
fakulteta Sveučilišta  
u Zagrebu

PRIMUM  
NON  
NOCE  
RE

In fact, the method HAS A POTENTIAL to be that (“top of the pyramid”)

- ❖ Because all relevant data might be considered (if search adequate)
- ❖ Primary studies are re-evaluated using validated instruments (“remove bias”)
- ❖ Data analysis might “correct” some errors from primary trials

HOWEVER

- ❖ Always *post-hoc* – cannot mend major flaws in primary studies
- ❖ Might be methodologically flawed at every level
- ❖ Overall – the results might be MISLEADING (off-target)

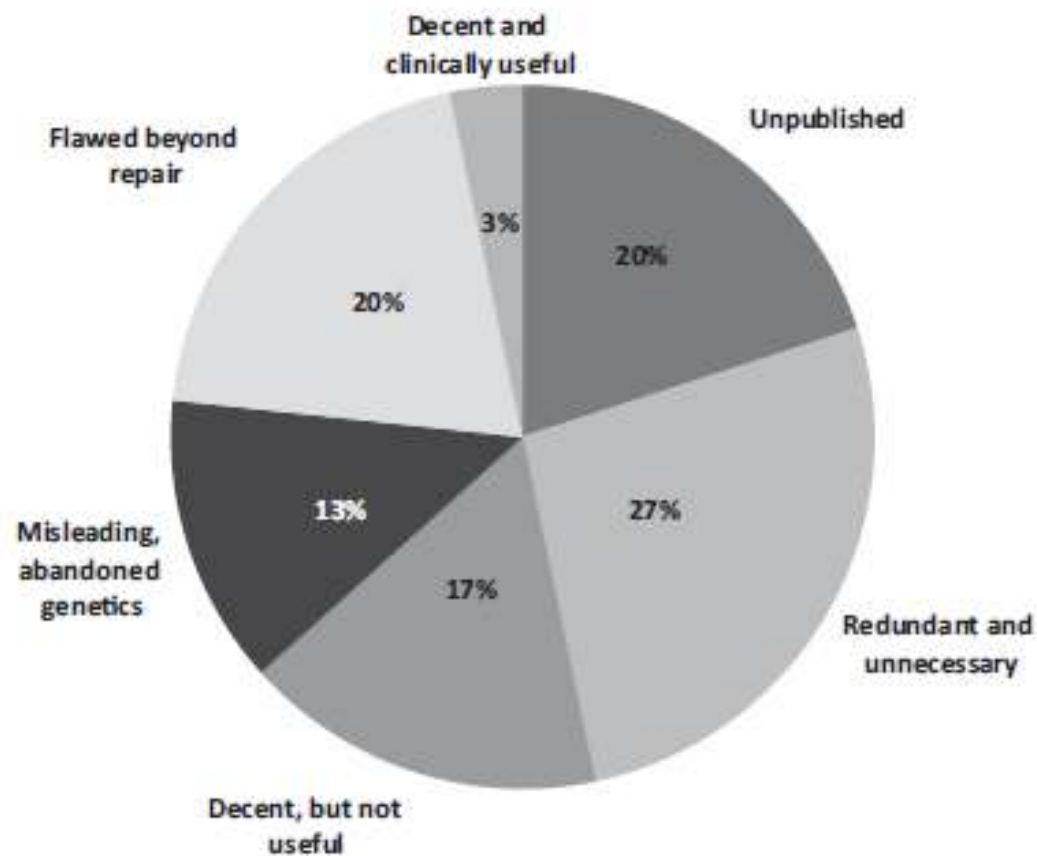
## D. Limitations & misconceptions



1917 – 2017  
100 godina Medicinskog  
fakulteta Sveučilišta  
u Zagrebu

PRIMUM  
NON  
NOCE  
RE

- ❖ >9000 SR/MA in (bio)medicine published in 2014 (Milbank Quarterly 2016; 94:485)



## D. Limitations & misconceptions



1917–2017  
100 godina Medicinskog  
fakulteta Sveučilišta  
u Zagrebu

PRIMUM  
NON  
NOCE  
RE

- ❖ Methodologically flawed (e.g.) (Croat Med J 2014; 55:468-480)

TABLE 2. Quality of the included reviews based on the AMSTAR (26) checklist\*

	Einarson 2000 (28)	Zhang 2001 (29)	v.d Valk 2005 (30)	Li 2006 (31)	Denis 2007 (32)	Fung 2007 (33)	Aptel 2008 (34)	Cheng 2008 (35)	Hodge 2008 (36)	Loon 2008 (37)	Cheng 2009a (38)	Cheng 2009b (39)	Ejawa 2009 (40)	Hornubia 2009 (41)	v.d. Valk 2009 (42)	Orme 2010 (43)
Design "a priori"?	?	Y	?	Y	Y	Y	Y	Y	Y	Y	Y	?	?	Y	Y	Y
Duplicate selection/ extraction?	Y	Y	Y	Y	N	Y	Y	Y	Y	Y	Y	Y	Y	Y	Y <sup>#</sup>	?
Comprehensive search?	Y	Y	Y	Y	Y	Y	Y	Y	Y	Y	Y	Y	Y	Y	Y <sup>#</sup>	Y
Publication status clear?	Y	Y	Y	Y	Y	Y	Y	Y	Y	Y	Y	Y	Y	Y	Y <sup>#</sup>	Y
List included/ex- cluded provided? <sup>†</sup>	?	?	?	Y	?	?	?	Y	?	?	?	?	?	Y	?	Y
Study characteris- tics provided?	Y	Y	Y	Y	Y	Y	Y	Y	Y	Y	Y	Y	Y	Y	Y <sup>#</sup>	Y
Quality assessed?	Y	Y	Y	Y	N	Y	Y	Y	Y	Y	Y	Y	Y	Y	Y <sup>#</sup>	N
Quality accounted for conclusions?	Y	Y	Y	N	N	Y	Y	N	Y	Y	Y	Y	Y	N	N	N
Appropriate meth- od for pooling?	N	N	N	?	N	Y	?	?	Y	N	N	N	Y	?	?	Y
Publication bias assessed?	N	N	Y	Y	Y	Y	Y	N	N	Y	Y	Y	Y	Y	?	Y
Conflict of interest declared?	Y	N	Y	Y	Y	Y	Y	Y	Y	N	N	Y	Y	Y	Y	Y
AMSTAR score	7	7	8	9	6	10	9	8	9	8	8	8	9	9	7	8

\*Abbreviations: Y – yes; N – No; ? – can't tell; NA – not applicable.

<sup>†</sup>All reviews reported on included studies, but only 3 reported also on excluded studies. Hence, most reviews failed to meet this quality criterion.

<sup>#</sup>Described in the previous publication [v.d. Valk 2005 (30)].



## D. Limitations & misconceptions



1917 – 2017  
100 godina Medicinskog  
fakulteta Sveučilišta  
u Zagrebu

PRIMUM  
NON  
NOCE  
RE

- ❖ Typical examples of methodological flaws
    - Inadequate/incomplete search
    - Disregarding primary study quality
    - Lack of understanding of “random-effects” and “fixed effect” concepts
    - Lack of understanding of “heterogeneity” and “inconsistency”
    - Lack of understanding of “clinical consistency”
    - Naïve data pooling (disregarding randomization)
    - Erroneous post- vs. pre- difference calculation
    - Treating observational studies as RCTs – using raw data instead of adjusted estimates
    - Inadequate methods for sparse data
- Etc.

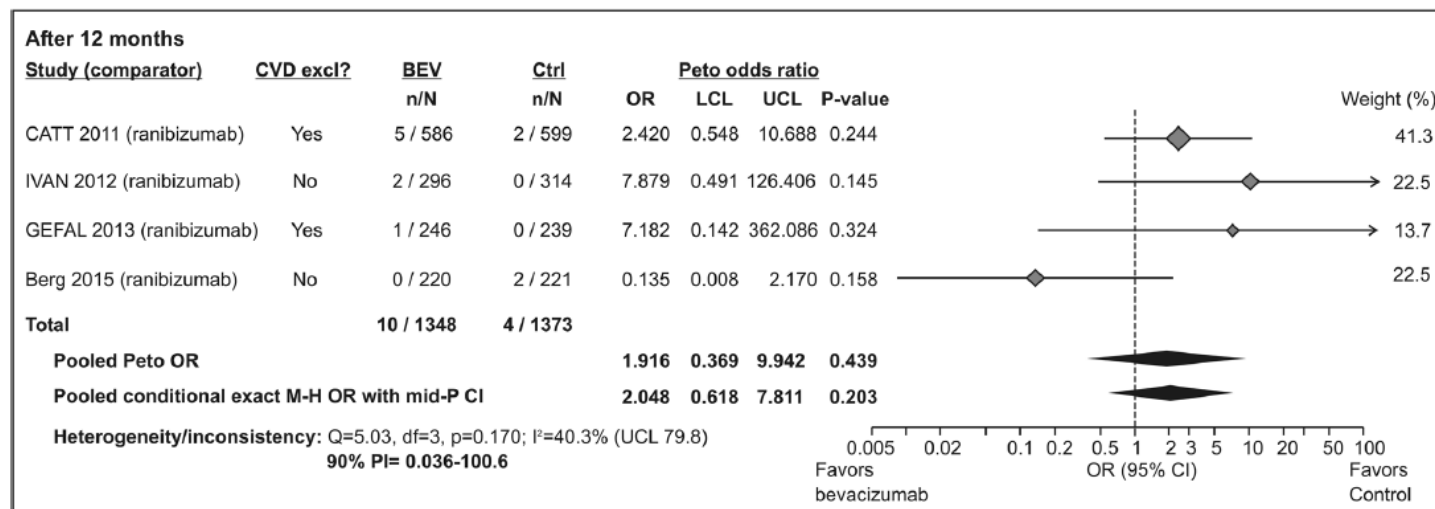
## D. Limitations & misconceptions



1917–2017  
100 godina Medicinskog  
fakulteta Sveučilišta  
u Zagrebu

PRIMUM  
NON  
NOCE  
RE

- ❖ A lot of limitations arises from MISINTERPRETATION (by authors or readers)



(Drug Saf 2016; doi.10.1007/s40264-016-0408-y)

- ❖ **Erroneous:** “there is trend of a higher VTE risk with bevacizumab”
- ❖ **Erroneous:** “there is no difference between bevacizumab and ranibizumab regarding VTE”
- ❖ **Appropriate:** We have no idea!

## D. Limitations & misconceptions

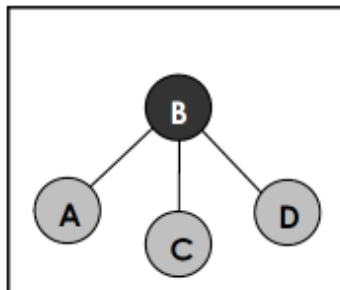


1917–2017  
100 godina Medicinskog  
fakulteta Sveučilišta  
u Zagrebu

PRIMUM  
NON  
NOCE  
RE

- ❖ A lot of limitations arises from MISINTERPRETATION (by authors or readers)

Indirect: star with pair-wise  
contrasts



Comparison	Progression-Free Survival
	HR (95% CI; 95% PI)
Gefitinib vs. chemotherapy	0.44 (0.31–0.63; 0.22–0.88)
Erlotinib vs. chemotherapy	0.25 (0.15–0.42; 0.11–0.55)
Afatinib vs. chemotherapy	0.44 (0.26–0.75; 0.20–0.98)
Erlotinib vs. gefitinib	0.57 (0.30–1.08; 0.24–1.36)
Afatinib vs. gefitinib	1.01 (0.53–1.92; 0.42–2.42)
Erlotinib vs. afatinib	0.56 (0.27–1.18; 0.22–1.46)

(J Thorac Oncol 2014; 9:805-811)

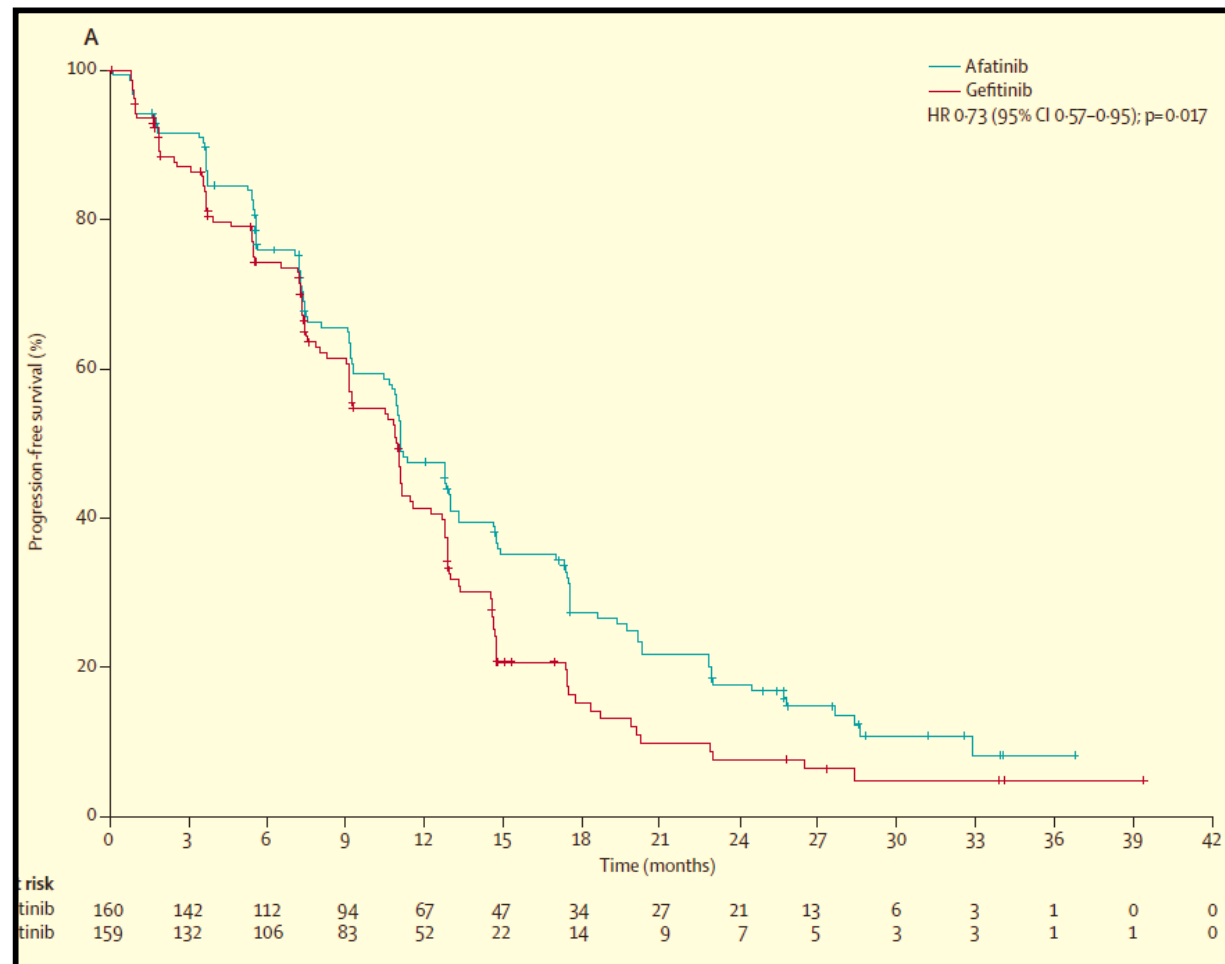
## D. Limitations & misconceptions



1917–2017  
100 godina Medicinskog  
fakulteta Sveučilišta  
u Zagrebu

PRIMUM  
NON  
NOCE  
RE

- ❖ A lot of limitations arises from MISINTERPRETATION (by authors or readers)



(Lancet Oncol 2016; doi. 10.1016/S1470-2045(16)30033-x)



1917–2017  
100 godina Medicinskog  
fakulteta Sveučilišta  
u Zagrebu

PRIMUM  
NON  
NOCE  
RE

## To CONCLUDE

- ❖ SR w/wo MA – is a **potentially** powerful tool
  - For more accurate/precise estimates of the population
  - For evaluation of accumulated evidence and definition of further goals

## YET

- ❖ It is susceptible to bias and random error (as any research method)
- ❖ May be **uninformative** or **misleading**