

# Isolated Kaposi sarcoma of the stomach

---

**Markoš, Pave; Iveković, Hrvoje; Pulanić, Roland; Vucelić, Boris**

Source / Izvornik: **Endoscopy, 2012, 44, E112 - E113**

**Journal article, Accepted version**

**Rad u časopisu, Završna verzija rukopisa prihvaćena za objavljivanje (postprint)**

<https://doi.org/10.1055/s-0031-1291670>

Permanent link / Trajna poveznica: <https://um.nsk.hr/um:nbn:hr:105:802672>

Rights / Prava: [In copyright](#)/[Zaštićeno autorskim pravom.](#)

Download date / Datum preuzimanja: **2024-07-24**



Repository / Repozitorij:

[Dr Med - University of Zagreb School of Medicine](#)  
[Digital Repository](#)





## Središnja medicinska knjižnica

**Markoš P., Iveković H., Pulanić R., Vucelić B. (2012) *Isolated Kaposi sarcoma of the stomach*. Endoscopy, 44 (Suppl. 2). pp. E112-3. ISSN 0013-726X**

<http://endoscopy.thieme.com>

<http://dx.doi.org/10.1055/s-0031-1291670>

<http://medlib.mef.hr/2046>

University of Zagreb Medical School Repository

<http://medlib.mef.hr/>

Endoscopy No. •• / 2011

ENDOS-2011-6824 / Markos

CL code: 1.3.1

Unusual Cases and Technical Notes

## **Isolated Kaposi sarcoma of the stomach**

P. Markos, H. Ivekovic, R. Pulanic, B. Vucelic

Division of Gastroenterology and Hepatology, Department of Internal Medicine,  
University Hospital Zagreb, Zagreb, Croatia

Short title: Isolated Kaposi sarcoma of the stomach

Corresponding author

P. Markos, MD

Division of Gastroenterology and Hepatology

Department of Internal Medicine

Clinical Hospital Center

Kispaticева 12

10000 Zagreb

Croatia

Fax: +385-1-2420100

Email: [pave.markos@inet.hr](mailto:pave.markos@inet.hr)

Copy editor: jw / 15 January 2012 / Typesetting deadline

*Competing interests:* None

A 54-year-old man was admitted to a regional hospital with fever, weight loss, and malaise. He was found to have infection with the human immunodeficiency virus (HIV). An upper gastrointestinal endoscopy revealed multiple gastric submucosal nodules; biopsies of the nodules were taken, the histopathology of these being reported as gastric adenocarcinoma. The patient was therefore referred to our unit for further evaluation.

On admission, his physical examination was unremarkable except for the presence of cervical lymphadenopathy. Laboratory tests revealed only mild normochromic anemia. We performed an upper gastrointestinal endoscopy and found multiple red–purple vascular submucosal nodules distributed from the cardia to the prepyloric region, which varied in size from 4 to 20 mm (**Figure 1a-1d, Video 1**). Multiple biopsies were taken with cold forceps, but the histopathology of these was unremarkable, showing only chronic gastritis. It was therefore decided to proceed to endoscopic mucosal resection (EMR). One of the lesions was raised up with 4 mL of adrenalin (dilution with saline 1:5000) and a mucosectomy was performed without complications (**Figure 2**). Histopathologic examination was pathognomonic of Kaposi sarcoma, showing spindle cell proliferation and vascular slits with hemorrhage. The patient was referred to the Infectious Diseases Hospital for further treatment.

Kaposi sarcoma is a multicentric vascular tumor, which accounts for 60% of tumors in patients with acquired immune deficiency syndrome (AIDS) [1]. Involvement of the gastrointestinal tract by Kaposi sarcoma can precede or be synchronous with the development of skin lesions or may occur without skin lesions. Gastrointestinal involvement occurs at diagnosis in 40% of homosexual men with AIDS and is seen in up to 80% at autopsy [2]. The various gastrointestinal sites that may be affected by

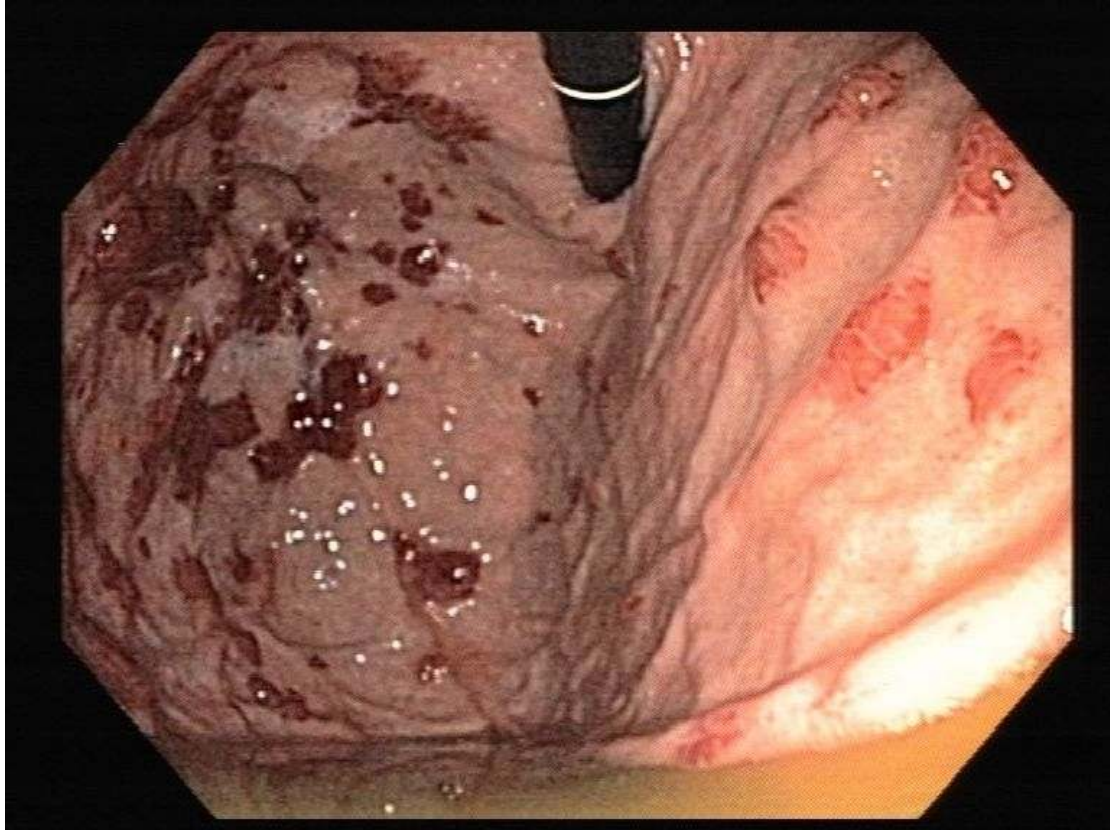
Kaposi sarcoma include the oropharynx, the esophagus, the stomach, the liver, and the small and large bowel [1].

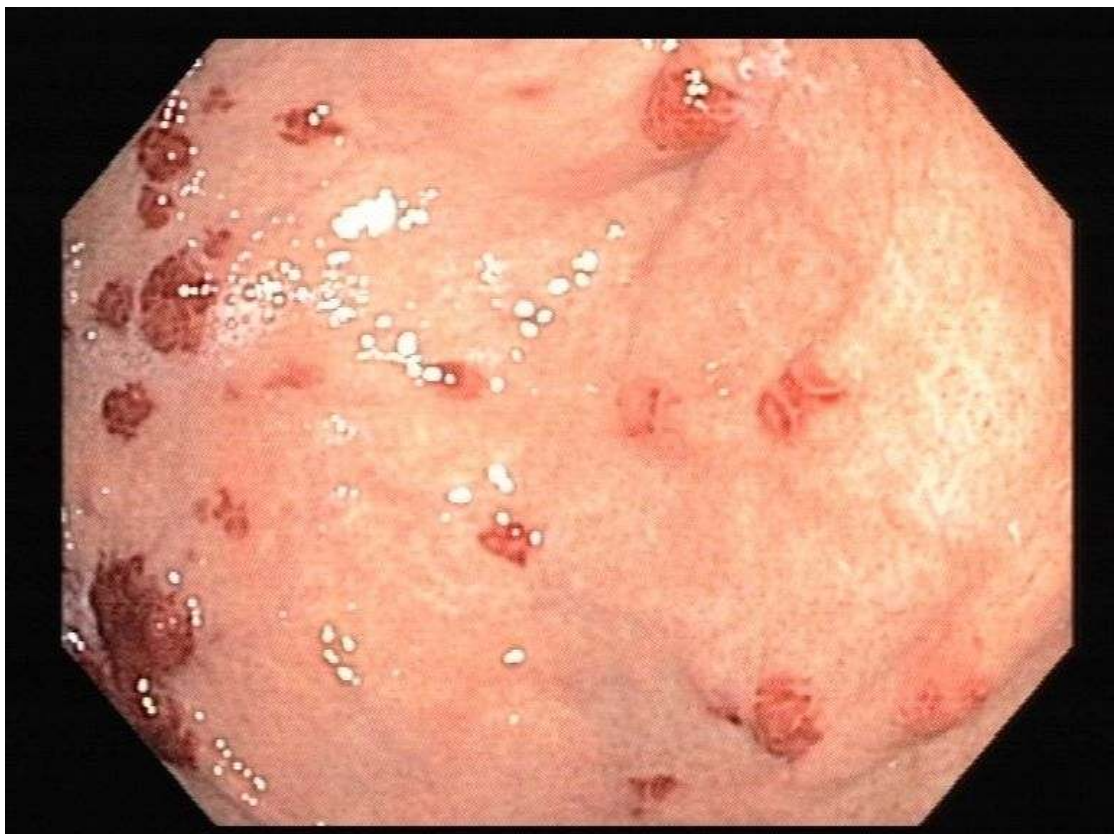
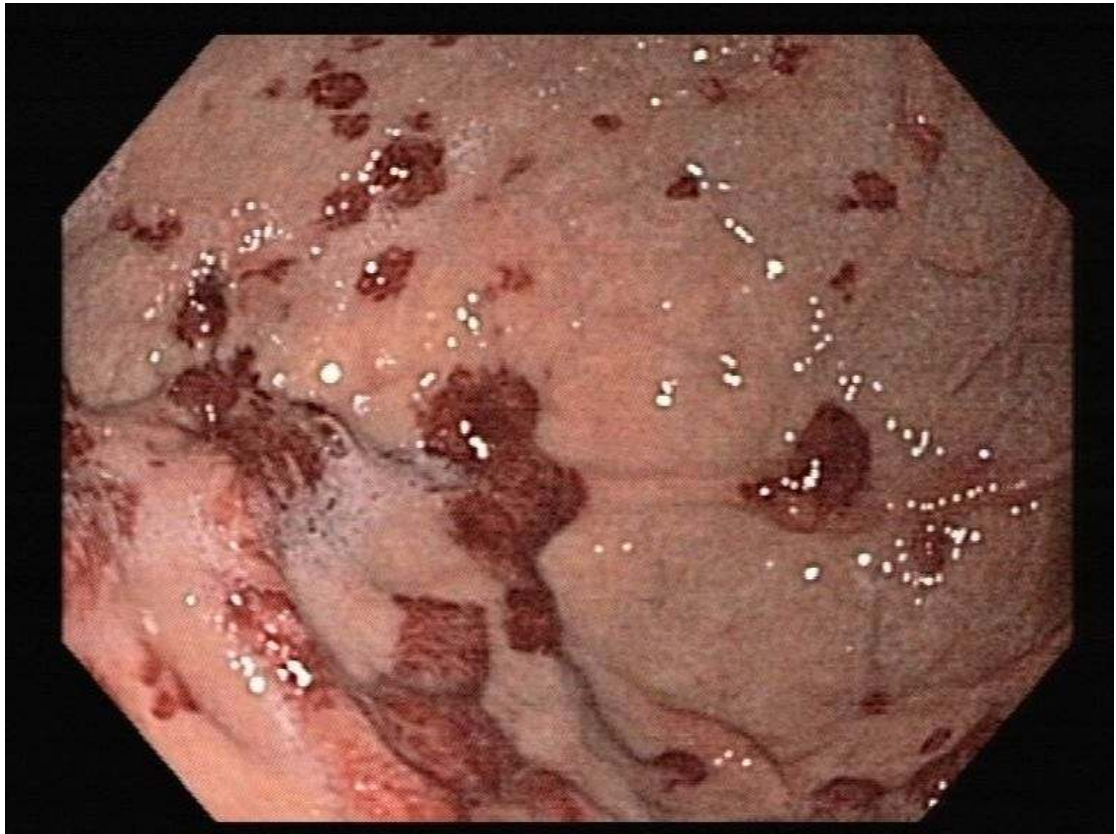
The endoscopic findings in gastric Kaposi sarcoma can vary from lesions similar to a peptic ulcer to the more typical purple vascular submucosal nodules covered with a thin layer of overlying mucosa. Lesions are usually asymptomatic but can present with gastrointestinal bleeding and gastric outlet obstruction [3]. An adequate histologic sample is critical for diagnosis. Cold forceps biopsies are usually sufficient but may be inadequate for the diagnosis of stromal proliferation tumors [4]. In such cases, diagnosis may be possible only after EMR of a gastric nodule.

## References

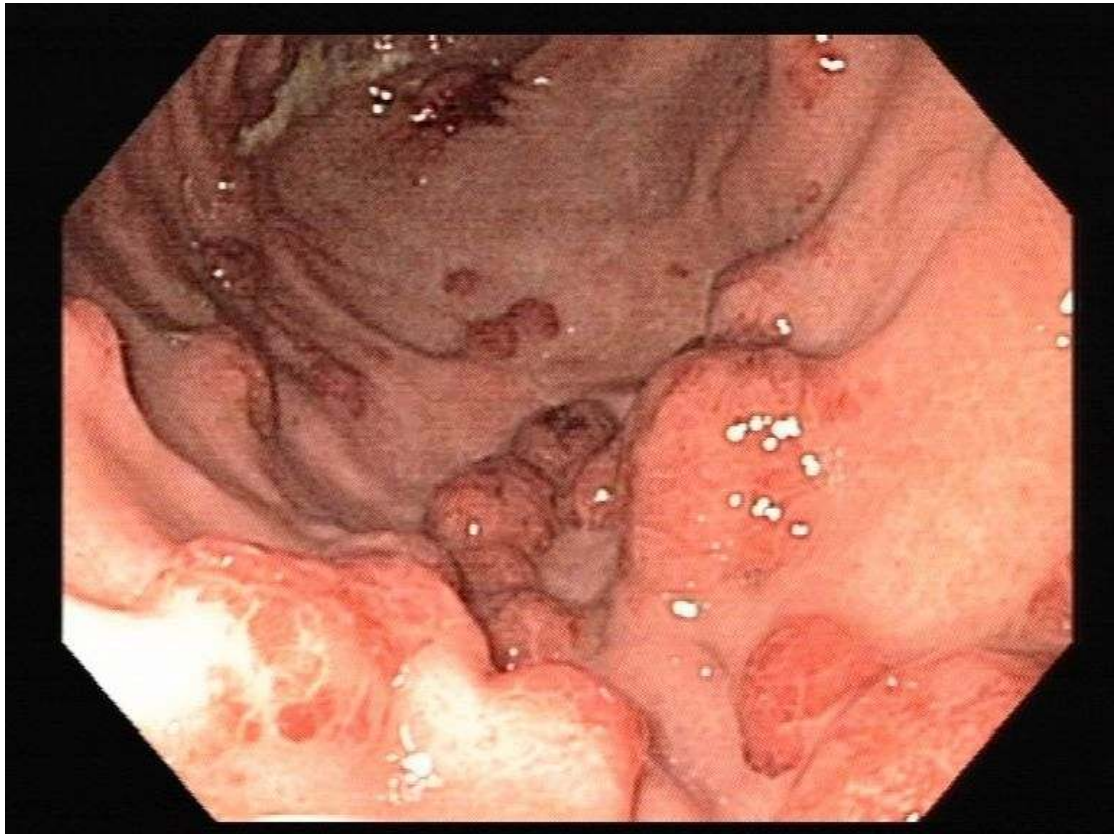
- 1 Danzig JB, Brandt LJ, Reinus JF et al. Gastrointestinal malignancy in patients with AIDS. *Am J Gastroenterol* 1991; 86: 715–718
- 2 Friedman SL, Wright TL, Altman DF. Gastrointestinal Kaposi sarcoma in patients with acquired immunodeficiency syndrome: endoscopy and autopsy findings. *Gastroenterology* 1985; 89: 102
- 3 Lin CH, Hsu CW, Chiang YJ et al. Esophageal and gastric Kaposi's sarcomas presenting as upper gastrointestinal bleeding. *Chang Gung Med J* 2002; 25: 329–333
- 4 Sakagami J, Sogame Y, Kataoka K et al. Endoscopic resection for the diagnosis of visceral Kaposi's sarcoma. *J Gastroenterol* 2005; 40: 98–103

**Figure 1: Images during an upper gastrointestinal endoscopy in a 54-year-old man with acquired immune deficiency syndrome (AIDS) showing: a fundus; b close-up view; c proximal corpus; d distal corpus.**



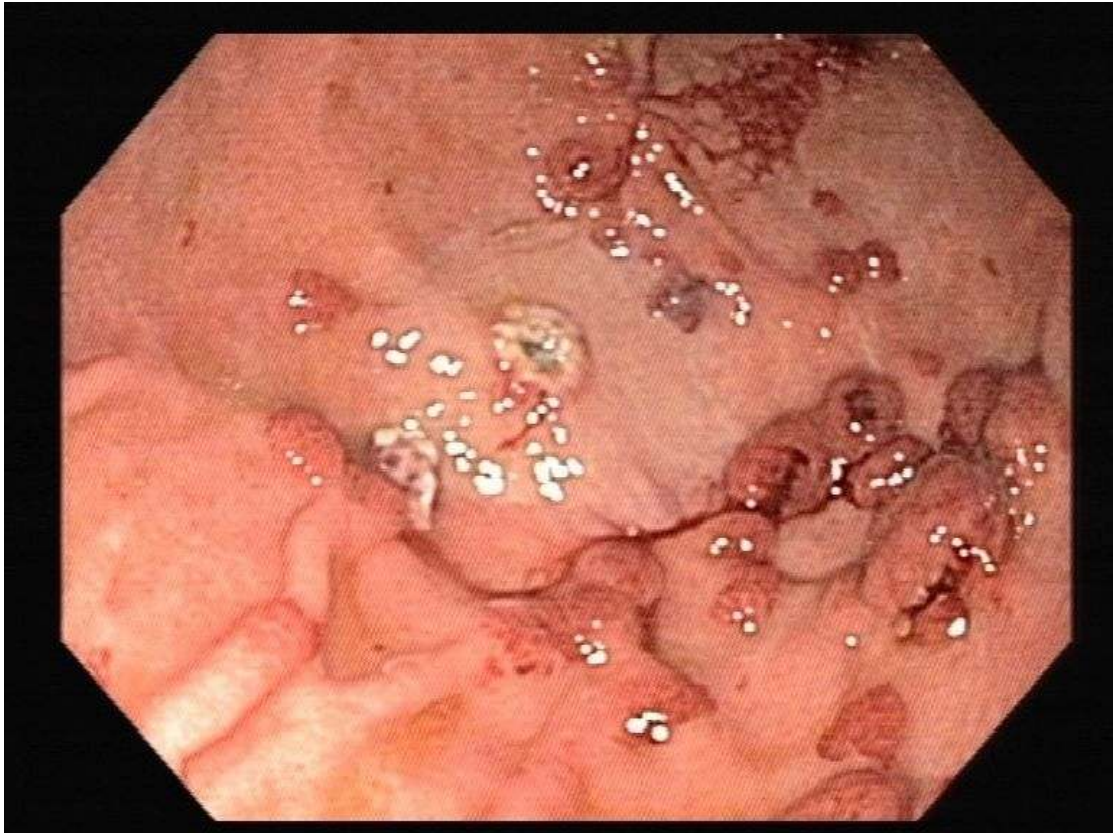








**Figure 2: Image after EMR of one lesion in middle corpus.**



**Video 1: Clip showing the multiple submucosal nodules in gastric fundus, subcardiac region and proximal part of the corpus.**