

Liver re-transplantation for donor-derived neuroendocrine tumor: a case report

Mrzljak, Anna; Kocman, Branislav; Škrtić, Anita; Furač, Ivana; Popić, Jelena; Franušić, Lucija; Žunec, Renata; Mayer, Davor; Mikulić, Danko

Source / Izvornik: **World Journal of Clinical Cases, 2019, 7, 2794 - 2801**

Journal article, Published version

Rad u časopisu, Objavljena verzija rada (izdavačev PDF)

<https://doi.org/10.12998/wjcc.v7.i18.2794>

Permanent link / Trajna poveznica: <https://urn.nsk.hr/urn:nbn:hr:105:825464>

Rights / Prava: [Attribution-NonCommercial 4.0 International/Imenovanje-Nekomercijalno 4.0 međunarodna](#)

Download date / Datum preuzimanja: **2024-07-29**



Repository / Repozitorij:

[Dr Med - University of Zagreb School of Medicine Digital Repository](#)



Liver re-transplantation for donor-derived neuroendocrine tumor: A case report

Anna Mrzljak, Branislav Kocman, Anita Skrtic, Ivana Furac, Jelena Popic, Lucija Franusic, Renata Zunec, Davor Mayer, Danko Mikulic

ORCID number: Anna Mrzljak (0000-0001-6270-2305); Branislav Kocman (0000-0003-1497-6031); Anita Skrtic (0000-0002-9275-7283); Ivana Furac (0000-0003-0430-9411); Jelena Popic (0000-0002-0959-3856); Lucija Franusic (0000-0002-3411-5004); Renata Zunec (0000-0003-2607-3059); Davor Mayer (0000-0002-7206-296X); Danko Mikulic (0000-0001-8103-6045).

Author contributions: Mrzljak A and Franusic L made contributions to the conception and design of the study, acquisition of the data, and drafting of the manuscript; Kocman B was the patient's surgeon; Skrtic A and Popic J analyzed and interpreted the imaging findings; Furac I and Mayer D were involved in genetic analysis; Zunec R was involved in acquisition of donor data; Mikulic D made contributions to the study design and was involved in critically revising the manuscript; All authors read and approved the final manuscript.

Informed consent statement: Informed written consent was obtained from the patient for publication of this report and any accompanying images.

Conflict-of-interest statement: The authors declare that they have no conflict of interest.

CARE Checklist (2016) statement: The authors have read the CARE Checklist (2013), and the manuscript was prepared and revised according to the CARE Checklist (2016).

Anna Mrzljak, Department of Medicine, Merkur University Hospital, School of Medicine, University of Zagreb, Zagreb 10000, Croatia

Branislav Kocman, Danko Mikulic, Department of Surgery, Merkur University Hospital, Zagreb 10000, Croatia

Anita Skrtic, Department of Pathology and Cytology, Merkur University Hospital, School of Medicine, University of Zagreb, Zagreb 10000, Croatia

Ivana Furac, DNA Laboratory, Institute of Forensic Medicine and Criminalistics, School of Medicine, University of Zagreb, Zagreb 10000, Croatia

Jelena Popic, Department of Radiology, Merkur University Hospital, School of Medicine, University of Zagreb, Zagreb 10000, Croatia

Lucija Franusic, School of Medicine, University of Zagreb, Zagreb 10000, Croatia

Renata Zunec, Department for Tissue Typing, Clinical Hospital Centre Zagreb, Zagreb 10000, Croatia

Davor Mayer, Institute of Forensic Medicine and Criminalistics, School of Medicine, University of Zagreb, Zagreb 10000, Croatia

Corresponding author: Anna Mrzljak, MD, PhD, Assistant Professor, Department of Medicine, Merkur University Hospital, School of Medicine, University of Zagreb, Salata 3b, Zajceva 19, Zagreb 10000, Croatia. anna.mrzljak@mef.hr

Telephone: +385-1-2431016

Abstract

BACKGROUND

Donor-origin cancer is a well-recognized but rare complication after liver transplantation (LT). The rise in the use of extended criteria donors due to the current shortage of organs increases the risk. Data on donor-origin neuroendocrine neoplasms (NENs) and the most appropriate treatment are scarce. Here, we report a case of a patient who developed a NEN confined to the liver after LT and was treated with liver re-transplantation (re-LT).

CASE SUMMARY

A 49-year-old man with no other medical co-morbidities underwent LT in 2013 for alcoholic liver cirrhosis. The donor was a 73-year-old female with no known malignancies. Early after LT, a hypoechoic (15 mm) lesion was detected in the

Open-Access: This article is an open-access article which was selected by an in-house editor and fully peer-reviewed by external reviewers. It is distributed in accordance with the Creative Commons Attribution Non Commercial (CC BY-NC 4.0) license, which permits others to distribute, remix, adapt, build upon this work non-commercially, and license their derivative works on different terms, provided the original work is properly cited and the use is non-commercial. See: <http://creativecommons.org/licenses/by-nc/4.0/>

Manuscript source: Invited manuscript

Received: June 19, 2019

Peer-review started: June 26, 2019

First decision: August 1, 2019

Revised: August 5, 2019

Accepted: August 20, 2019

Article in press: August 20, 2019

Published online: September 26, 2019

P-Reviewer: Abdel-Salam OME

S-Editor: Ma RY

L-Editor: Filipodia

E-Editor: Liu JH



left hepatic lobe on abdominal ultrasound. The lesion was stable for next 11 mo, when abdominal magnetic resonance identified two hypovascular lesions (20 and 11 mm) with atypical enhancement pattern. Follow-up abdominal ultrasound revealed no new lesions for the next 2.5 years, when magnetic resonance showed a progression in size and number of lesions, also confirmed by abdominal computed tomography. Liver biopsy proved a well-differentiated NEN. Genetic analysis of the NEN confirmed donor origin of the neoplasm. As NEN was confined to liver graft only, in 2018, the patient underwent his second LT. At 12 mo after re-LT the patient is well with no signs of NEN dissemination.

CONCLUSION

The benefits of graft explantation should be weighed against the risks of re-LT and the likelihood of NEN dissemination beyond the graft.

Key words: Donor-origin tumor; Neuroendocrine tumor; Liver transplantation; Donor; Case report

©The Author(s) 2019. Published by Baishideng Publishing Group Inc. All rights reserved.

Core tip: Donor-origin neuroendocrine neoplasm is a rare but well-recognized complication after liver transplantation. The management is individualized and liver re-transplantation may be considered a long-term treatment option. However, the benefits of graft explantation should be weighed against the risks of liver re-transplantation and the likelihood of neuroendocrine neoplasm dissemination beyond the graft.

Citation: Mrzljak A, Kocman B, Skrtic A, Furac I, Popic J, Franusic L, Zunec R, Mayer D, Mikulic D. Liver re-transplantation for donor-derived neuroendocrine tumor: A case report. *World J Clin Cases* 2019; 7(18): 2794-2801

URL: <https://www.wjgnet.com/2307-8960/full/v7/i18/2794.htm>

DOI: <https://dx.doi.org/10.12998/wjcc.v7.i18.2794>

INTRODUCTION

Donor origin cancer is a well-recognized complication after liver transplantation (LT). Different cases of donor origin malignancies after LT have been published including various central nervous system tumors, choriocarcinoma, adenocarcinoma of the lung, colon, pancreas, prostate, ovarian cancer, melanoma, sarcoma, lymphoma, and neuroendocrine neoplasms (NENs).

NENs are a rare heterogeneous group of neoplasms arising from the diffuse neuroendocrine system commonly located in the gastroenteropancreatic or bronchial tract^[1]. NENs confined to the liver are a rare entity. With the aging of the population, the incidence of NEN has increased^[2-5]. Notably, NENs are difficult to diagnose and at the time of diagnosis usually have metastasized in about 50% of cases^[6]. In selected cases, non-resectable liver metastases are an acceptable indication for LT^[7,8].

Donor-origin NENs are extremely rare and data on the most appropriate treatment are scarce, ranging between different non-surgical and surgical options that include conversion or reduction of immunosuppression, chemotherapy, locoregional therapy, or LT with modest results^[9-12].

Given the scarcity of data regarding the management of this entity after LT, we believe it is important to share single experiences and collect as much data as possible to form future evidence-based recommendations. Here, we present a case of a donor-origin NEN confined to the liver and treated with liver re-transplantation (re-LT).

CASE PRESENTATION

Chief complaints

The patient reported no complaints.

History of past illness

A 49-year-old Caucasian man with no medical comorbidities underwent LT in 2013

due to alcoholic cirrhosis. His Model of End Stage Liver disease score was 17. The deceased donor was a 73-year-old woman with no known malignancies, who died of intracerebral hemorrhage. Two other recipients received kidneys from this donor. The patient's postoperative period was uneventful and his immunosuppression consisted of tacrolimus, mycophenolate mofetil, and a prednisone taper.

History of present illness

At 11 d after LT, abdominal ultrasound revealed an oval hypoechogenic 15 mm lesion in the left hepatic lobe morphologically characterized as hemangioma.

Physical examination

His physical examination was unremarkable.

Laboratory examinations

His graft function was stable and his kidney function was normal. His blood count and tumor markers (carcinoembryonic antigen, carbohydrate antigen 19-9, alpha-fetoprotein, and prostate-specific antigen) were within the normal limits. At year 3 after LT, his liver function tests worsened slightly, with a hepatocellular pattern (aspartate aminotransferase, 151 U/L; alanine aminotransferase, 107 U/L; γ -glutamyl transferase, 325 U/L; alkaline phosphatase, 114 U/L). His bilirubin level was normal (20 μ mol/L) and serum chromogranin level was elevated (279.9 ng/mL).

Imaging examinations

Imaging follow-up continued and 11 mo after LT, abdominal magnetic resonance (MR) identified two hypovascular lesions (20 and 11 mm) with an atypical enhancement pattern: Peripheral enhancement in the arterial phase and hypovascularity in the portal venous and hepatobiliary phases (Figure 1A and B). The lesions showed restriction on diffusion-weighted images (Figure 1C and D). Abdominal US follow-up revealed no new lesions for the next 2.5 years. At year 3 after LT, MR showed multiple lesions throughout the liver, confirmed also by abdominal computed tomography (CT) and described as secondary lesions (Figure 2A-C).

Liver biopsy revealed closely packed nests of well-differentiated neuroendocrine tumor cells with four mitoses/2 mm². Necrosis was not found. Immunohistochemically, tumor cells were positive for cytokeratin AE1/AE3, cytokeratin 7, synaptophysin, chromogranin A, and thyroid transcription factor 1 (TTF-1) and were negative for cytokeratin 20, hepatocyte, caudal type homeobox 2, and carcinoembryonic antigen. The Ki67 index was 18% (Figure 3).

Further diagnostic work-up

Positron emission tomography (PET)-CT, octreotide scan, chest CT, upper gastrointestinal endoscopy, and colonoscopy did not reveal a primary extrahepatic source. DNA fingerprinting was done to determine if the tumor was of donor or recipient origin. Samples analyzed included the explanted tumor and reference samples of recipient blood and donor DNA extract. DNA extraction from formalin-fixed, paraffin-embedded tissue blocks was performed in duplicate using the QIAamp DNA Mini Kit (Qiagen, Hilden, Germany). DNA from recipient blood was extracted using InstaGene Matrix (Bio-Rad, Hercules, CA, United States). DNA was quantified with the Quantifiler Trio DNA Quantification Kit (Applied Biosystems, Framingham, MA, United States) according to the manufacturer's instructions using the 7500 Real Time PCR System (Applied Biosystems). Genotyping was performed using the GlobalFiler PCR Amplification Kit and ProFlex PCR System, and analyses were conducted with the 3500 Genetic Analyzer using GeneMapper ID-X 1.5 software (Applied Biosystems). This kit amplifies 21 autosomal short tandem repeat loci, 1 Y-short tandem repeat, and 1 Y-indel and amelogenin (sex-determining marker). All samples were successfully amplified. The results of the tumor sample were consistent with the predominant donor genotype. There was a complete match between the tumor specimen and reference donor sample (Figure 4). The likelihood ratio of $4 \times E25$ strongly indicated that the tumor cells were of donor origin.

FINAL DIAGNOSIS

The final diagnosis of the case presented is a well-differentiated donor-origin NEN, classified as lung-NEN, atypical carcinoid (AC).

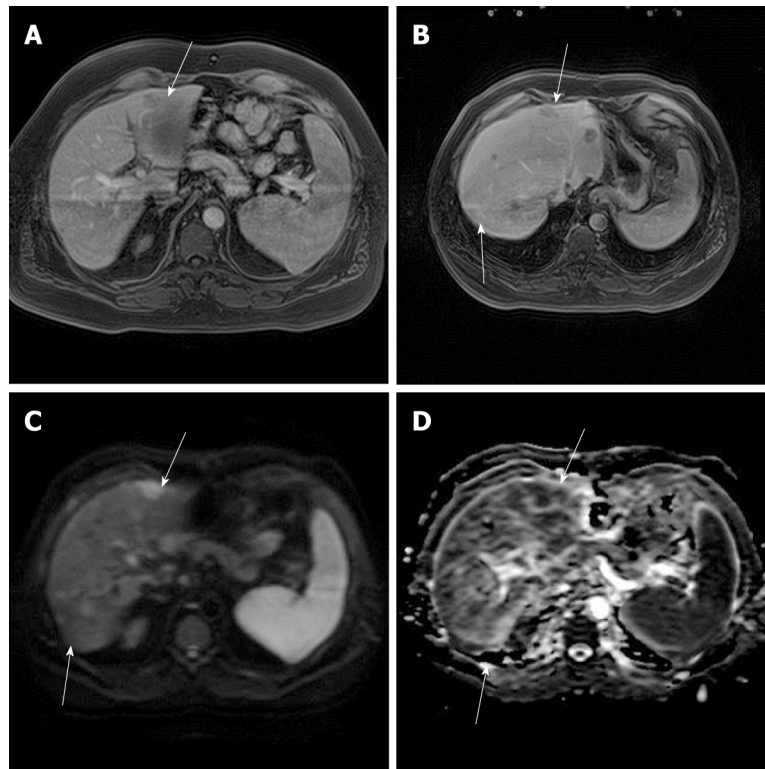


Figure 1 MR images 11 mo after LT. A: Axial postcontrast T1 MR images showed light peripheral enhancement of the lesion in segment III in the arterial phase (arrow); B: Postcontrast axial images through the transplanted liver revealed hypointensive lesions in segments III and VIII in the portal venous phase (arrows); C: Diffusion-weighted images with b 600 showed hyperintensity of the same lesions; D: On apparent diffusion coefficient map, the lesions showed diffusion restriction. LT: Liver transplant; MR: Magnetic resonance.

TREATMENT

The multidisciplinary team decided that re-LT was the best treatment option for the patient, and he was re-listed on the liver waitlist. In 2018, 5 years after his first LT, the patient received a second whole liver graft from a deceased donor. No other NEN treatments were performed before the second LT. Multiple whitish, partially hemorrhagic, soft nodules up to 0.5 cm diffusely occupied 60% of the explanted liver graft. Morphology and immunohistochemistry of tumors were identical to the biopsied liver tumor.

OUTCOME AND FOLLOW-UP

At 12 mo after re-LT, the patient is well and on maintenance immunosuppression consisting of tacrolimus and mycophenolate mofetil, with no signs of NEN dissemination as confirmed by PET-CT.

DISCUSSION

The risk of donor-transmitted (present at the time of LT) or donor-derived (developed within the graft after LT) cancer is rather small, ranging from 0.017% to 0.03%^[13,14]. However, given the current shortage of donors in the face of increasing organ demand, this risk could increase in the future. The use of extended criteria donor organs has risen, especially the use of older donors and donors with comorbidities. In the Eurotransplant region in 2013, 454 liver donors (22.9%) were 65 years of age or older^[15] and the percentage has slowly risen to 26.6% in 2017^[16].

The risk of donor-transmitted cancer should be reduced by careful screening of the donor; however it is impossible to abolish it. Even though our donor pool is aging and shifting to margins of "reliable and safe," the standardized donor work-up in many cases still does not include thoracic and abdominal CT scans.

In our case, in 2013 the use of an organ from a 73-year-old donor was considered a

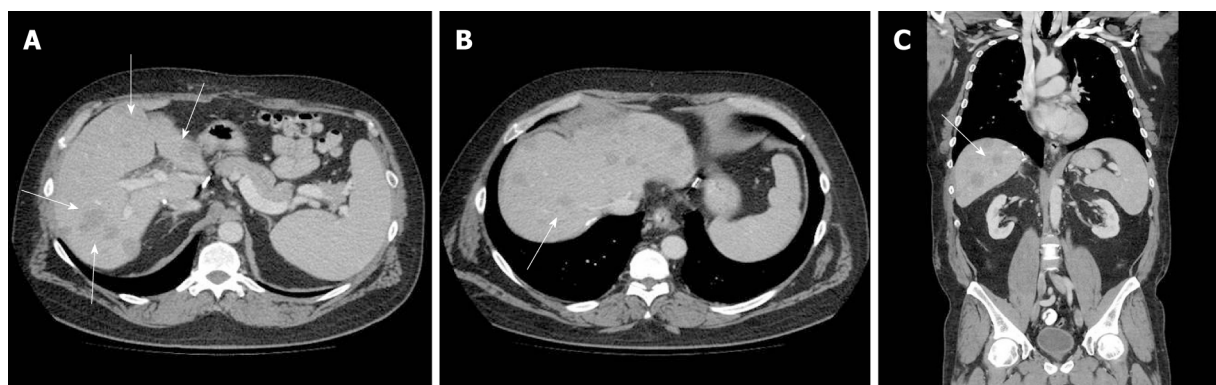


Figure 2 Abdominal CT images 3.5 years after LT. Axial (A and B) and coronal (C) CT images in the portal venous phase, revealed multiple hypovascular lesions (arrows) compared to previous MR images in **Figure 1**. CT: Computed tomography; LT: Liver transplant; MR: Magnetic resonance.

good opportunity for an end-stage alcoholic patient, whose clinical deterioration was not reflected by a high laboratory Model of End Stage Liver disease score. The donor had no comorbidities other than hypertension and acute pyelonephritis, and was screened by both thoracic and abdominal CT scans, where the only detected abnormality was a left adrenal adenoma.

Detection of a small lesion in the graft early after LT had initially aroused suspicion of a donor-transmitted tumor, but given the size stability as well as atypical morphological characteristics mimicking hemangioma during the follow-up, it was monitored routinely. Three years later, the multiple liver lesions indicated liver biopsy, which revealed a well-differentiated NEN.

Gastro-enteropancreatic NENs are classified based on the proliferative index Ki-67, whereas lung NEN (Lu-NENs) classification is based on mitotic counts and assessment of necrosis^[17,18]. TTF-1 is a useful marker of pulmonary origin; however, only a minority of well-differentiated Lu-NETs are TTF-1-positive^[19]. Immunohistochemical staining in our case suggested a tumor of pulmonary origin, and fitted a histologic variant of AC—an intermediate-grade malignant tumor. Lu-NENs are rare tumors with an incidence rate ranging from 0.2 to 2/100000 population/year. AC is the most uncommon of the Lu-NENs^[20,21]. Lu-NENs demonstrate a heterogeneous clinical behavior, but many of the well-differentiated tumors are indolent and slow growing with a 5-year survival that can be up to 50-70%^[22].

The presented donor Lu-NEN in an immunocompromised patient had a favorable biology, with a slow growing course in the graft and no dissemination beyond the liver. This strongly favored the argument for LT as the best long-term treatment option for the patient.

Donor-origin NENs are extremely rare, and only a handful of cases have been reported in the literature to date^[9-12]. Two separate cases of undifferentiated neuroendocrine small-cell carcinoma demonstrated an aggressive course after LT and a poor outcome. Both were detected early, at 4 mo after LT. The first case was considered for re-LT, but as peritoneal spread was noted during the exploration this option was rejected. The patient's immunosuppression was switched to rapamycin and chemotherapy was initiated but the patient died 6 mo after LT^[10]. In the second case, the patient was also converted to rapamune-based immunosuppression, with addition of locoregional therapy (yttrium-90 spheres), followed by systemic chemotherapy with etoposide and cisplatin and re-LT. However, early after the second LT, tumor detection in the pancreatic tissue led to a near-total distal pancreatectomy and splenectomy, while multiple brain lesions resulted in hydrocephalus requiring ventriculostomy, radiotherapy, and systemic topotecan chemotherapy. The patient died 17 mo after his first LT^[11]. An additional two cases of donor-origin NENs management after LT are reported in the literature. The first case was detected 9 mo after LT and was treated with cessation of immunosuppressive therapy and addition of systemic taxol and carboplatin chemotherapy. The duration of the follow-up in this case is unknown^[9]. In the second case, a poorly differentiated case of NEN with Ki67 index of 4% was detected 5 years after LT and treated with re-LT and conversion to sirolimus-based immunosuppression. A recurrence was detected 2 years after his second LT. Locoregional therapy (yttrium-90 spheres) with systemic subitinib and octreotid therapy was initiated. The patient died 3 years after his re-LT^[12].

A recent report of two cases of NENs that were incidentally detected during living donor hepatectomy substantiates the unavoidable risk of donor-transmitted tumors,

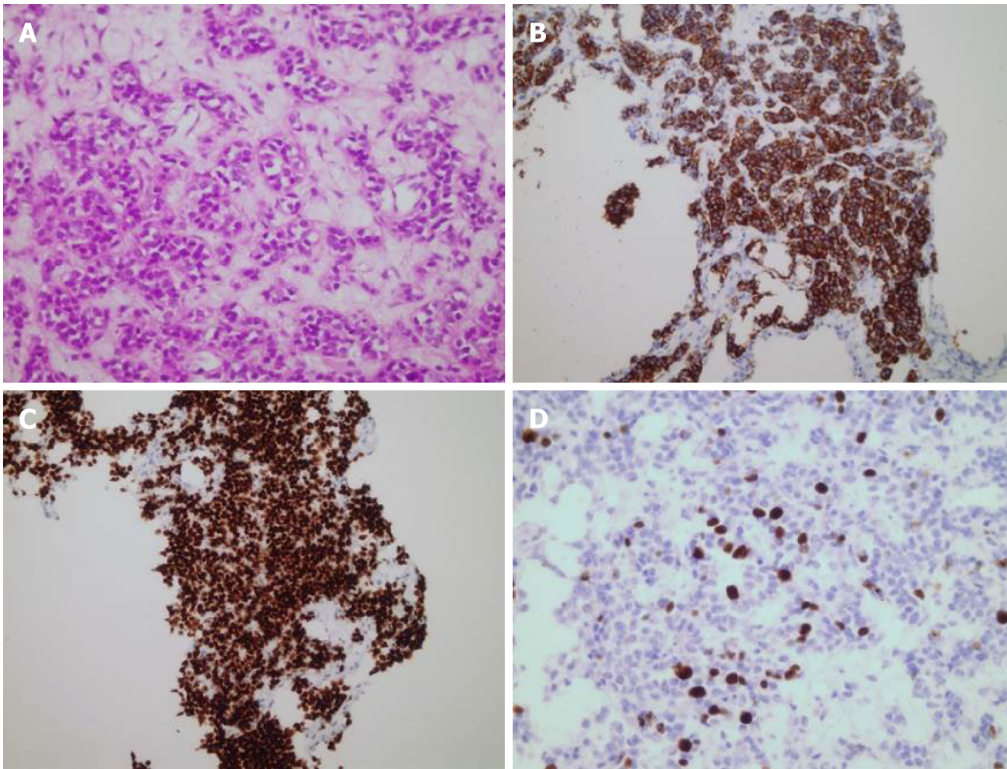


Figure 3 Liver biopsy and immunohistochemistry of neuroendocrine tumor. A: Closely packed nests of well-differentiated neuroendocrine cells (hematoxylin and eosin staining; magnification 400 ×); B: Synaptophysin staining (magnification 200 ×); C: TTF-1 staining (magnification 200 ×); D: Ki67 (magnification 400 ×).

also in the living donor pool. Both living donors were young (26 and 29 years) and underwent preoperative examinations. In both cases, intestinal NENs were detected intraoperatively after right hepatectomy in the small intestine and appendix. Both donors and recipients were closely followed up, and neither developed any tumor suspected lesions^[23].

CONCLUSION

The risk of donor-transmitted or donor-derived tumor is small, but unavoidable. It is possible that it will increase in the future due to the use of extended criteria donors, which are becoming a substantial part of our donor pool. The risk should be minimized by careful screening of the donor; however, at the time of listing, it is important that potential recipients are informed about it. In the context of donor-derived neuroendocrine tumors after LT, the management is individualized and the benefits of graft explantation should be weighed against the risks of re-LT and the likelihood of NEN dissemination beyond the graft.

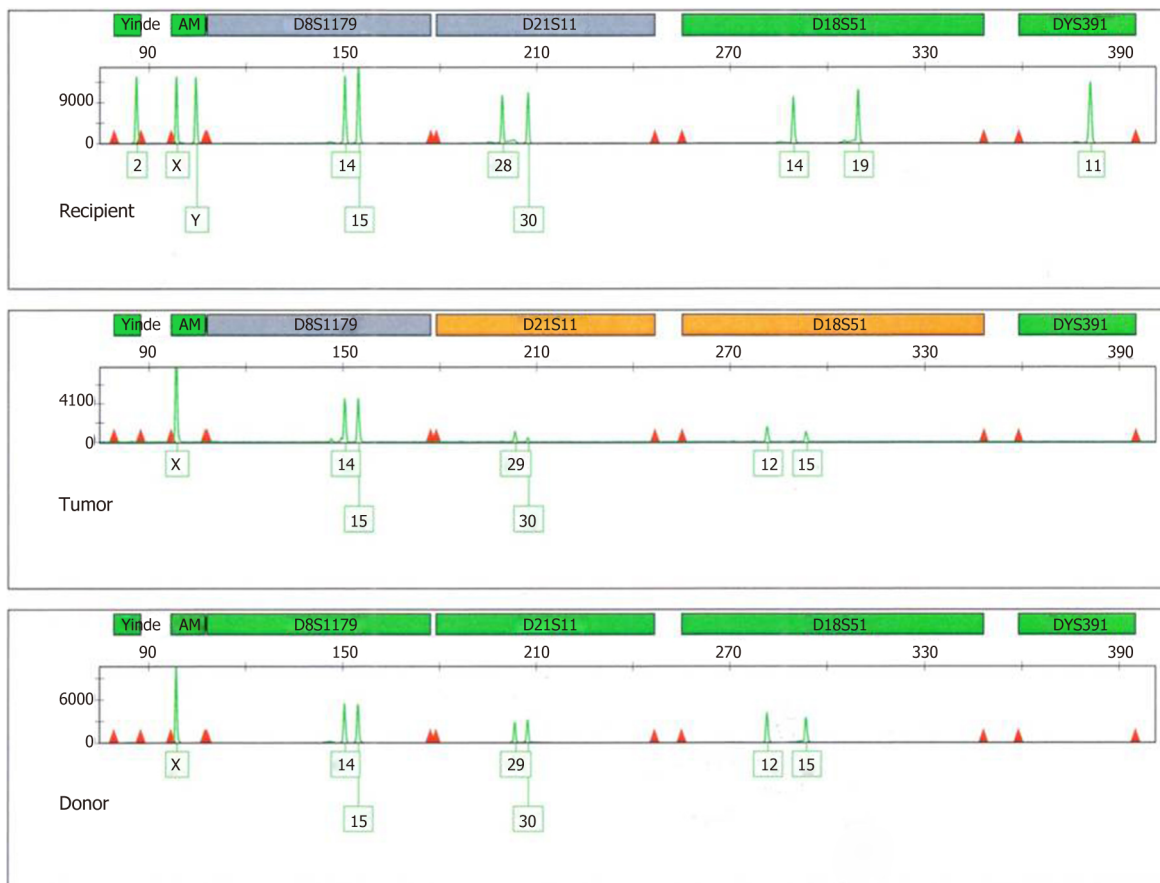


Figure 4 DNA profile of six markers (Yindel, Amelogenin, D8S1179, D21S11, D18S51, and DYS391) for recipient blood, tumor tissue, and donor sample.

ACKNOWLEDGEMENTS

The authors thank Marijana Mašić, BSc for her assistance and Ivona Paurović for valuable technical help regarding genetic analysis.

REFERENCES

- 1 **Modlin IM**, Sandor A. An analysis of 8305 cases of carcinoid tumors. *Cancer* 1997; **79**: 813-829 [PMID: 9024720 DOI: 10.1002/(sici)1097-0142(19970215)79:4<813::aid-cnrcr19>3.0.co;2-2]
- 2 **Yao JC**, Hassan M, Phan A, Dagohoy C, Leary C, Mares JE, Abdalla EK, Fleming JB, Vauthey JN, Rashid A, Evans DB. One hundred years after "carcinoid": epidemiology of and prognostic factors for neuroendocrine tumors in 35,825 cases in the United States. *J Clin Oncol* 2008; **26**: 3063-3072 [PMID: 18565894 DOI: 10.1200/JCO.2007.15.4377]
- 3 **Dasari A**, Shen C, Halperin D, Zhao B, Zhou S, Xu Y, Shih T, Yao JC. Trends in the Incidence, Prevalence, and Survival Outcomes in Patients With Neuroendocrine Tumors in the United States. *JAMA Oncol* 2017; **3**: 1335-1342 [PMID: 28448665 DOI: 10.1001/jamaoncol.2017.0589]
- 4 **Boyar Cetinkaya R**, Aagnes B, Thiis-Evensen E, Tretli S, Bergsetuen DS, Hansen S. Trends in Incidence of Neuroendocrine Neoplasms in Norway: A Report of 16,075 Cases from 1993 through 2010. *Neuroendocrinology* 2017; **104**: 1-10 [PMID: 26562558 DOI: 10.1159/000442207]
- 5 **Guo LJ**, Wang CH, Tang CW. Epidemiological features of gastroenteropancreatic neuroendocrine tumors in Chengdu city with a population of 14 million based on data from a single institution. *Asia Pac J Clin Oncol* 2016; **12**: 284-288 [PMID: 27170574 DOI: 10.1111/ajco.12498]
- 6 **Partelli S**, Bartsch DK, Capdevila J, Chen J, Knigge U, Niederle B, Niveen van Dijkum EJM, Pape UF, Pascher A, Ramage J, Reed N, Ruszniewski P, Scoazec JY, Toumpanakis C, Kianmanesh R, Falconi M; Antibes Consensus Conference participants. ENETS Consensus Guidelines for Standard of Care in Neuroendocrine Tumours: Surgery for Small Intestinal and Pancreatic Neuroendocrine Tumours. *Neuroendocrinology* 2017; **105**: 255-265 [PMID: 28237989 DOI: 10.1159/000464292]
- 7 **Clift AK**, Frilling A. Liver transplantation and multivisceral transplantation in the management of patients with advanced neuroendocrine tumours. *World J Gastroenterol* 2018; **24**: 2152-2162 [PMID: 29853733 DOI: 10.3748/wjg.v24.i20.2152]
- 8 **Lim C**, Lahat E, Osseis M, Sotirov D, Salloum C, Azoulay D. Liver Transplantation for Neuroendocrine Tumors: What Have We Learned? *Semin Liver Dis* 2018; **38**: 351-356 [PMID: 30357772 DOI: 10.1055/s-0038-1669936]
- 9 **Baehner R**, Magrane G, Balassanian R, Chang C, Millward C, Wakil AE, Osorio RW, Waldman FM. Donor origin of neuroendocrine carcinoma in 2 transplant patients determined by molecular cytogenetics.

- Hum Pathol* 2000; **31**: 1425-1429 [PMID: 11112220 DOI: 10.1016/S0046-8177(00)80015-5]
- 10 **Foltys D**, Linkermann A, Heumann A, Hoppe-Lotichius M, Heise M, Schad A, Schneider J, Bender K, Schmid M, Mauer D, Peixoto N, Otto G. Organ recipients suffering from undifferentiated neuroendocrine small-cell carcinoma of donor origin: a case report. *Transplant Proc* 2009; **41**: 2639-2642 [PMID: 19715991 DOI: 10.1016/j.transproceed.2009.06.026]
- 11 **Begum R**, Harnois D, Satyanarayana R, Krishna M, Halling KC, Kim GP, Nguyen JH, Keaveny AP. Retransplantation for donor-derived neuroendocrine tumor. *Liver Transpl* 2011; **17**: 83-87 [PMID: 21254348 DOI: 10.1002/lt.22196]
- 12 **Al-Azzawi Y**, Stein LL, Shrestha R, Bhasin D, Citron SJ, Rubin RA. Donor-Derived Hepatic Neuroendocrine Tumor: Pause Before Proceeding With Liver Retransplantation. *Transplant Direct* 2016; **2**: e88 [PMID: 27830182 DOI: 10.1097/TXD.0000000000000549]
- 13 **Myron Kauffman H**, McBride MA, Cherikh WS, Spain PC, Marks WH, Roza AM. Transplant tumor registry: donor related malignancies. *Transplantation* 2002; **74**: 358-362 [PMID: 12177614 DOI: 10.1097/00007890-200208150-00011]
- 14 **Desai R**, Collett D, Watson CJ, Johnson P, Evans T, Neuberger J. Cancer transmission from organ donors- unavoidable but low risk. *Transplantation* 2012; **94**: 1200-1207 [PMID: 23269448 DOI: 10.1097/TP.0b013e318272df41]
- 15 **Eurotransplant**. Available from: <https://members.eurotransplant.org/cms/mediaobject.php?file=AR20134.pdf>
- 16 **Eurotransplant**. Available from: <https://members.eurotransplant.org/cms/mediaobject.php?file=Annual+Report+2017+HR9.pdf>
- 17 **Lloyd RV**, Osamura RY, Kloppel G. *WHO classification of tumours of endocrine organs, chapter 6*. Lyon: International Agency for Research on Cancer 2017; 210-239
- 18 **Travis WD**, Brambilla E, Nicholson AG, Yatabe Y, Austin JHM, Beasley MB, Chirieac LR, Dacic S, Duhig E, Flieder DB, Geisinger K, Hirsch FR, Ishikawa Y, Kerr KM, Noguchi M, Pelosi G, Powell CA, Tsao MS, Wistuba I; WHO Panel. The 2015 World Health Organization Classification of Lung Tumors: Impact of Genetic, Clinical and Radiologic Advances Since the 2004 Classification. *J Thorac Oncol* 2015; **10**: 1243-1260 [PMID: 26291008 DOI: 10.1097/JTO.0000000000000630]
- 19 **Brambilla E**, Beasley MB, Austin JHM, Capelozzi VL, Chirieac LR, Devesa SS, Frank GA, Gazdar A, Ishikawa Y, Jen J, Jett J, Marchevsky AM, Nicholson S, Pelosi G, Powell CA, Rami-Porta R, Scagliotti G, Thunnissen E, Travis WD, van Schil P, Yang P, Travis W, Brambilla E, Burke A, et al. Neuroendocrine tumours. WHO Classification of Tumours of the Lung, Pleura, Thymus and Heart. Fourth Ed. ed. World Health Organization Classification of Tumours. Travis W, Brambilla E, Burke A, et al. *Lyon: IARC Press* 2015; 63-77
- 20 **Beasley MB**, Thunnissen FB, Hasleton PhS, Barbareschi M, Pugatch B, Geisinger K, Brambilla E, Gazdar A, Travis WD. Carcinoid tumour. In: Travis W, Brambilla E, Muller-Hermelink H, et al. *Tumours of the lung, pleura, thymus and heart*. Lyon: IARC Press; 2004; 59-62
- 21 **Gustafsson BI**, Kidd M, Chan A, Malfertheiner MV, Modlin IM. Bronchopulmonary neuroendocrine tumors. *Cancer* 2008; **113**: 5-21 [PMID: 18473355 DOI: 10.1002/cncr.23542]
- 22 **Tsoli M**, Chatzellis E, Koumariou A, Kolomodi D, Kaltsas G. Current best practice in the management of neuroendocrine tumors. *Ther Adv Endocrinol Metab* 2018; **10**: 2042018818804698 [PMID: 30800264 DOI: 10.1177/2042018818804698]
- 23 **Akbulut S**, Isik B, Cicek E, Samdanci E, Yilmaz S. Neuroendocrine tumor incidentally detected during living donor hepatectomy: A case report and review of literature. *World J Hepatol* 2018; **10**: 780-784 [PMID: 30386471 DOI: 10.4254/wjh.v10.i10.780]



Published By Baishideng Publishing Group Inc
7041 Koll Center Parkway, Suite 160, Pleasanton, CA 94566, USA
Telephone: +1-925-2238242
E-mail: bpgoffice@wjgnet.com
Help Desk: <https://www.f6publishing.com/helpdesk>
<https://www.wjgnet.com>

