

COVID-19 and hairy-cell leukemia: an EPICOVIDEHA survey

Lamure, Sylvain; Salmanton-García, Jon; Robin-Marieton, Elena; Jakšić, Ozren; Kohn, Milena; Marchesi, Francesco; Marchetti, Monia; El-Ashwah, Shaimaa; Demirkan, Fatih; Valković, Toni; ...

Source / Izvornik: **Blood Advances**, 2022, 6, 3870 - 3874

Journal article, Published version

Rad u časopisu, Objavljena verzija rada (izdavačev PDF)

<https://doi.org/10.1182/bloodadvances.2022007357>

Permanent link / Trajna poveznica: <https://urn.nsk.hr/urn:nbn:hr:105:337410>

Rights / Prava: [Attribution-NonCommercial-NoDerivatives 4.0 International/Imenovanje-Nekomercijalno-Bez prerada 4.0 međunarodna](#)

Download date / Datum preuzimanja: **2024-09-05**



Repository / Repozitorij:

[Dr Med - University of Zagreb School of Medicine Digital Repository](#)



TO THE EDITOR:

COVID-19 and hairy-cell leukemia: an EPICOVIDEHA survey

Sylvain Lamure,^{1,*} Jon Salmanton-García,^{2,3,*} Elena Robin-Marieton,^{4,*} Ozren Jaksic,⁵ Milena Kohn,⁶ Francesco Marchesi,⁷ Monia Marchetti,⁸ Shaimaa El-Ashwah,⁹ Fatih Demirkan,¹⁰ Toni Valković,¹¹ Noemí Fernández,¹² Maria Chiara Tisi,¹³ Zlate Stojanoski,¹⁴ Guldane Cengiz Seval,¹⁵ Osman Ilhan,¹⁵ Lucia Prezioso,¹⁶ Maria Merelli,¹⁷ Alberto López-García,¹⁸ Marie-Pierre Ledoux,¹⁹ Austin Kulasekararaj,²⁰ Tomás-José González-López,²¹ Maria Gomes da Silva,²² Ziad Emarah,²³ Rafael F. Duarte,²⁴ Chiara Cattaneo,²⁵ Ola Blennow,²⁶ Yavuz M. Bilgin,²⁷ Rui Bergantim,²⁸ Josip Batinić,²⁹ Raul Cordoba,³⁰ Jenna Essame,³¹ Anna Nordlander,³² Raquel Nunes Rodrigues,³³ Maria Vittoria Sacchi,³⁴ Sofia Zompi,³⁵ Alessandro Busca,³⁵ Paolo Corradini,³⁶ Martin Hoenigl,³⁷ Nikolai Klimko,³⁸ Philipp Koehler,^{2,3} Antonio Pagliuca,³⁹ Francesco Passamonti,⁴⁰ Rémy Duléry,⁴¹ Oliver A. Cornely,⁴²⁻⁴⁶ Caroline Besson,^{47,†} and Livio Pagano^{48,†}

¹Department of Clinical Hematology, Montpellier University Hospital, IGMM UMR5535 Centre National de la Recherche Scientifique (CNRS), University of Montpellier, Montpellier, France; ²Faculty of Medicine and University Hospital Cologne, Translational Research, Cologne Excellence Cluster on Cellular Stress Responses in Aging-Associated Diseases (CECAD), University of Cologne, Cologne, Germany; ³Department I of Internal Medicine, Faculty of Medicine and University Hospital Cologne, Center for Integrated Oncology Aachen Bonn Cologne Duesseldorf (CIO ABCD) and Excellence Center for Medical Mycology (ECMM), University of Cologne, Cologne, Germany; ⁴Service d'Hématologie Oncologie, Centre Hospitalier de Versailles, Le Chesnay, France; ⁵University Hospital Dubrava, Zagreb, Croatia; ⁶Service d'Hématologie Oncologie, Centre Hospitalier de Versailles, Le Chesnay, France; ⁷Hematology and Stem Cell Transplant Unit, Istituto di Ricovero e Cura a Carattere Scientifico (IRCCS) Regina Elena National Cancer Institute, Rome, Italy; ⁸Azienda Ospedaliera Nazionale SS. Antonio e Biagio e Cesare Arrigo, Alessandria, Italy; ⁹Oncology Center, Mansoura University, Mansoura, Egypt; ¹⁰Division of Hematology, Dokuz Eylul University, Izmir, Turkey; ¹¹University Hospital Centre Rijeka, and Croatian Cooperative Group for Hematological Diseases (CROHEM), Faculty of Medicine and Faculty of Health Studies University of Rijeka, Rijeka, Croatia; ¹²Hospital Universitario Marqués de Valdecilla, Santander, Spain; ¹³Department of Hematology, Ospedale San Bortolo, Vicenza, Italy; ¹⁴University Clinic of Hematology, Skopje, Republic of North Macedonia; ¹⁵Department of Hematology, Ankara University School of Medicine, Ankara, Turkey; ¹⁶Hematology and Bone Marrow Unit, University of Parma Hospital, Parma, Italy; ¹⁷Azienda Sanitaria Universitaria del Friuli Centrale, Udine, Italy; ¹⁸Fundacion Jimenez Diaz University Hospital, Health Research Institute IIS-FJD, Madrid, Spain; ¹⁹Institut de Cancérologie de Strasbourg Europe, Strasbourg, France; ²⁰King's College Hospital, London, United Kingdom; ²¹Department of Hematology, Hospital Universitario de Burgos, Burgos, Spain; ²²Departamento de Hematologia, Instituto Português de Oncologia, Lisboa, Portugal; ²³Oncology Center, Mansoura University, Mansoura, Egypt; ²⁴Hospital Universitario Puerta de Hierro, Majadahonda, Spain; ²⁵Hematology Unit, ASST-Spedali Civili, Brescia, Italy; ²⁶Department of Infectious Diseases, Karolinska University Hospital, Stockholm, Sweden; ²⁷Department of Internal Medicine, Adz, Goes, The Netherlands; ²⁸Centro Hospitalar e Universitário São João, Porto, Portugal; ²⁹School of Medicine, University of Zagreb, and Croatian Cooperative Group for Hematological Diseases (CROHEM), Zagreb, Croatia; ³⁰Health Research Institute IIS-FJD, Fundacion Jimenez Diaz University Hospital, Madrid, Spain; ³¹King's College Hospital, London, United Kingdom; ³²Department of Infectious Diseases, Karolinska University Hospital, Stockholm, Sweden; ³³Departamento de Hematologia, Instituto Português de Oncologia, Lisboa, Portugal; ³⁴Azienda Ospedaliera Nazionale SS. Antonio e Biagio e Cesare Arrigo, Alessandria, Italy; ³⁵Stem Cell Transplant Center, AOU Citta' della Salute e della Scienza, Turin, Italy; ³⁶University of Milan and Fondazione IRCCS, Istituto Nazionale dei Tumori, Milan, Italy; ³⁷Division of Infectious Diseases and Global Public Health, Department of Medicine, University of California San Diego, San Diego, and Clinical and Translational Fungal Research-Working Group, University of California San Diego, La Jolla, CA, and Division of Infectious Diseases, Department of Internal Medicine, Medical University of Graz, Graz, Austria; ³⁸North-Western State Medical University named after Iliá Ilich Méchnikov, Saint-Petersburg, Russia; ³⁹Department of Hematological Medicine, Kings College Hospital NHS Foundation Trust, London, United Kingdom; ⁴⁰Department of Medicine and Surgery, University of Insubria and ASST Sette Laghi, Ospedale di Circolo of Varese, Varese, Italy; ⁴¹Service d'Hématologie Clinique et de Thérapie Cellulaire, Hôpital Saint Antoine, Assistance Publique-Hôpitaux de Paris, Sorbonne University, INSERM UMR5 938, Paris, France, Faculty of Medicine, University of Cologne, and Department I of Internal Medicine, University Hospital Cologne, Excellence Center for Medical Mycology (ECMM), Cologne, Germany; ⁴²Faculty of Medicine and University Hospital Cologne, Translational Research, Cologne Excellence Cluster on Cellular Stress Responses in Aging-Associated Diseases (CECAD), Cologne, Germany; ⁴³Department I of Internal Medicine, Faculty of Medicine and University Hospital Cologne, Center for Integrated Oncology Aachen Bonn Cologne Duesseldorf (CIO ABCD) and Excellence Center for Medical Mycology (ECMM), and ⁴⁴Faculty of Medicine and University Hospital Cologne, Clinical Trials Centre Cologne (ZKS Köln), University of Cologne, Cologne, Germany; ⁴⁵German Centre for Infection Research (DZIF), Partner Site Bonn-Cologne, Cologne, Germany; ⁴⁶Faculty of Medicine, University of Cologne, and Translational Research, University Hospital Cologne, Cologne Excellence Cluster on Cellular Stress Responses in Aging-Associated Diseases (CECAD), Cologne, Germany; Faculty of Medicine, University of Cologne, and Clinical Trials Centre Cologne (ZKS Köln), University Hospital Cologne, Cologne, Germany, Faculty of Medicine, University of Cologne, and University Hospital Cologne, Center for Molecular Medicine Cologne (CMMC), Cologne, Germany, German Centre for Infection Research (DZIF), Partner Site Bonn-Cologne, Cologne, Germany; ⁴⁷Service d'Hématologie Oncologie, Centre Hospitalier de Versailles, Le Chesnay, France, Université Paris-Saclay, UVSQ, INSERM, Équipe Exosome et Héritéité, CESP, Villejuif, France; and ⁴⁸Hematology Unit, Fondazione Policlinico Universitario Agostino Gemelli-IRCCS, Rome, Italy, Hematology Unit, Università Cattolica del Sacro Cuore, Rome, Italy

Submitted 17 February 2022; accepted 3 April 2022; prepublished online on *Blood Advances* First Edition 2 May 2022; final version published online 5 July 2022. DOI 10.1182/bloodadvances.2022007357.

*S.L., J.S.-G., and E.R.-M. are joint junior authors.

†C.B. and L. Pagano are joint senior authors.

The data that support the findings of this study are available from the corresponding author (e-mail: jon.salmanton-garcia@uk-koeln.de) and senior author (e-mail: livio.pagano@unicatt.it) upon reasonable request.

The full-text version of this article contains a data supplement.

© 2022 by The American Society of Hematology. Licensed under Creative Commons Attribution-NonCommercial-NoDerivatives 4.0 International (CC BY-NC-ND 4.0), permitting only noncommercial, nonderivative use with attribution. All other rights reserved.

Hairy cell leukemia (HCL) is a rare B lineage malignancy with a high frequency of infection-related mortality. It represents 2% of leukemias¹ and 2% of lymphoid neoplasms.² Patients often present with bacterial, viral, or fungal opportunistic infections favored by the monocytopenia, neutropenia, and lymphopenia featuring the diagnosis.^{3,4} Immune deficiency is worsened by HCL treatments⁵ such as cladribine, a purine analog that depletes CD4⁺ T cells,⁶ or anti-CD20, which depletes B cells,⁷ both for a long period. Despite recent guidelines on HCL management in the context of the coronavirus disease 2019 (COVID-19) pandemic,⁸ data regarding outcomes of HCL patients with COVID-19 are scarce. In a cohort study including 111 patients with lymphoma who were hospitalized for COVID-19 in France, 2 patients (2%) had HCL.⁹ Furthermore, recent single case reports described either a concomitant diagnosis of COVID-19 and HCL¹⁰ or critical COVID-19 in a context of HCL.¹¹ In this study, we aim to report the characteristics and outcomes of patients with HCL and COVID-19 from the EPICOVIDEHA survey,¹² with a focus on patients with concomitant diagnosis of HCL and COVID-19.

The EPICOVIDEHA registry is an online survey collecting cases of COVID-19 in the context of a hematological malignancy since April 2020, and the registration of new cases is still active. The survey is promoted by the European Hematology Association - Infectious Diseases Working Party (EHA-IDWP) and has been approved centrally by the Institutional Review Board and Ethics Committee of Fondazione Policlinico Universitario A. Gemelli - IRCCS - Università Cattolica del Sacro Cuore, Rome, Italy (Study ID: 3226). The survey is registered at clinicaltrials.gov (#NCT04733729). The data are collected online using an electronic case report form available at www.clinicalsurveys.net (EFS Summer 2021, TIVIAN, Cologne, Germany). The following clinical and epidemiological data from patients with a laboratory-based diagnosis of severe acute respiratory syndrome coronavirus 2 (SARS-CoV-2) infection are collected: underlying conditions before SARS-CoV-2, hematological malignancy status, and management before SARS-CoV-2 infection. The severity of COVID-19 is graded according to the China Centers for Disease Control and Prevention and the cause of mortality.¹³

Until January 26, 2022, 40 patients with HCL and COVID-19 were reported out of the 2 422 lymphoproliferative neoplasms in the database (1.7%). Their median age was 60 years (interquartile range [IQR]: 53-67; range, 43-89), 7 patients were >70 years (18%), and 34 were male (85%; Table 1). Thirteen patients had any comorbidity (33%), mostly a cardiovascular condition. Median time between HCL and COVID-19 diagnosis was 14 months (range 0-660 months). The 7 cases diagnosed <1 month before COVID-19 were considered concomitant. HCL was diagnosed >1 month before COVID-19 for 33 patients (83%), including 5 under frontline therapy (13%), 11 in remission (28%), 15 with untreated stable disease (35%), 1 with a refractory disease (3%), and 1 with an unknown situation (3%). Regarding HCL treatments received before COVID-19, 17 patients had received cladribine (43%) at any time, including 16 as last treatment, and 3 were exposed to rituximab (8%). Time between cladribine treatment and COVID-19 was documented for 13 patients and ranged from 7 days to 18 years (median, 3 months); 8 of the patients had received cladribine <6 months before COVID-19. Due to the period covered by this study, only 5 patients were vaccinated against SARS-CoV-2 (13%), and variants were not documented. COVID-19 was severe for 19 cases (48%) and critical

Table 1. Baseline characteristics of patients with HCL and COVID-19

Characteristics	Sample (n = 40)
Demographic characteristics	
Age, y	
Median (IQR range)	60 (52-67 43-89)
≥70, n (%)	7 (18)
Male sex, n (%)	34 (85)
Comorbidities, n (%)	
Obesity	2 (5)
Smoking history	3 (8)
Chronic cardiovascular disease	9 (23)
Diabetes	2 (5)
Chronic pulmonary disease	5 (13)
HCL characteristics	
Status at COVID-19 diagnosis, n (%)	
Onset: concurrent diagnosis	7 (15)
Frontline therapy	5 (13)
Remission	11 (28)
Untreated stable disease	15 (41)
Refractory disease	1 (3)
Unknown	1 (3)
Last treatment before COVID-19, n (%)	
No treatment	19 (48)
Cladribine	17 (43)
Rituximab	2 (5)
Chlorambucil	1 (3)
Corticosteroids	1 (3)
COVID-19 characteristics	
Time between HCL diagnosis and COVID-19 (mo), median (IQR range)	14 (1-42 0-660)
Time between cladribine and COVID-19 (months), median (IQR range)	3 (2-32 0-223)
Vaccination	5 (13)
SARS-CoV-2 variant	
Unknown	32 (80)
Alpha	2 (5)
Delta	1 (3)
COVID-19 symptoms	
Pulmonary	22 (55)
Extrapulmonary	4 (10)
Pulmonary and extrapulmonary	8 (20)
Severity*	
Asymptomatic	3 (8)
Mild	3 (8)
Severe	19 (48)
Critical	14 (35)
Neutrophils at onset	
≤500	6 (15)
501-999	6 (15)
≥1000	26 (65)

Table 1. (continued)

Characteristics	Sample (n = 40)
Lymphocytes at onset	
≤200	8 (20)
201-499	8 (20)
≥500	21 (52)
Mortality	
Overall	10 (26)
COVID-19 related	9 (23)
Unknown reason	1 (3)

*Asymptomatic is for patients without clinical signs or symptoms, mild for those with non-pneumonia and mild pneumonia, severe for those with dyspnea, respiratory frequency ≥30 breaths/min, SpO₂ ≤ 93%, PaO₂/FIO₂ < 300, or lung infiltrates >50% on tomography, and critical for patients admitted in intensive care for respiratory failure, septic shock, or multiple organ dysfunction or failure.

for 14 (35%). The median length of in-hospital stay was 15 days (IQR: 8-26, range 1-84), and 8 patients were still hospitalized after 30 days (20%). Fourteen patients (35%) were admitted to an intensive care unit (ICU), of whom 10 (24%) were intubated, and the median stay at the ICU was 15 days (IQR: 6-30, range 1-57). A total of 10 patients died, amounting to a 25% overall mortality, and of these, 9 (90%) died due to the COVID-19, 1 case for an undetermined reason. Among the 22 patients who were treatment-free for HCL, 5 had died (23%), which is similar to the proportion of 5 deaths out of 17 patients (29%) who received cladribine (Figure 1), and no death was reported among the 5 patients who were vaccinated. We found a decrease in mortality along time: in 2020, 8 deaths were observed out of 27 patients (30%) vs 2 out of 13 in 2021 (15%).

Six out of 7 patients for whom HCL was diagnosed at the time of COVID-19 infection are described in the supplemental Table. Most of them did not suffer from any preexisting condition that could favor severe COVID-19 infection. Most of the patients required a hospitalization, and 2 of them were admitted in the ICU to receive noninvasive ventilation. All cases of HCL were diagnosed because of blood counts showing cytopenia, of which neutropenia and monocytopenia were constant. Physical examination and/or computed tomography scan showed enlarged spleen in most of patients. HCL diagnosis was confirmed by proving the coexpression of CD25, CD11c, and CD123 by the abnormal cells and/or by demonstration of BRAF V600E mutation. These findings highlight the importance of simple exams such as blood count and thorough physical examination when a patient presents with severe symptoms of COVID-19 because HCL diagnosis can be suspected when cytopenias and/or splenomegaly is present.

Here we report the first cohort of patients with HCL and COVID-19. The incidence in the survey is close to the previously reported 2% proportion of HCL among lymphoproliferative neoplasm.² In the EPICOVIDEHA study, 64% of cases were severe/critical, and the overall mortality was 31%. The 83% of severe/critical patients reported here suggests a more severe presentation of COVID-19, but the percentage of patients who died was comparable to the entire EPICOVIDEHA cohort.¹⁴ Former studies revealed a negative impact of antitumoral treatment on infection outcomes⁹; however, in this study that included a limited number of cases with variable

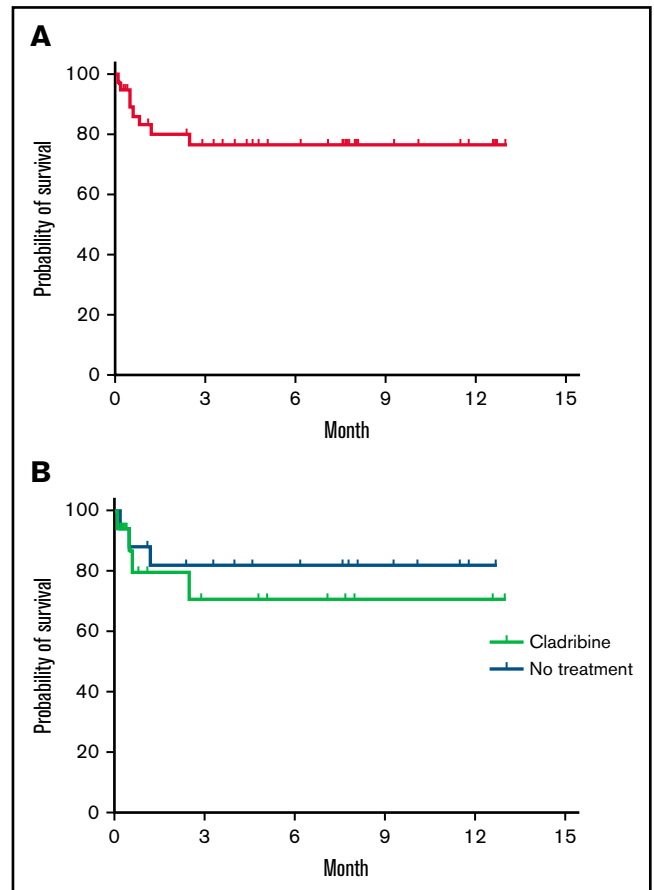


Figure 1. Overall survival of patients with COVID-19 and HCL. Probability of overall survival of 39 patients with hairy cell leukemia after COVID-19 diagnosis (A) and comparison of the survival of 17 patients who had a previous treatment with cladribine with 19 patients who received no treatment (B). Kaplan-Meier survival analysis made with Prism 9 version 9.3.1 (GraphPad 2021).

treatment-free period, we did not observe any effect of HCL treatment on mortality, with the limitation of the heterogeneity of our study population concerning the treatments received. The 20% of patients who stayed longer than 30 days in hospital suggests the frequent persistence of COVID-19 as reported previously.⁹ Besides, we observed a significant proportion of new diagnoses of HCL, revealed by splenomegaly and/or cytopenia in the situation of severe COVID-19, highlighting the importance of investigating cytopenia when present at COVID-19 diagnosis. Actually, it is common for patients with HCL to be affected by atypical and severe life-threatening infections because they present with complex immune defects affecting both cellular- and humoral-mediated immunity.¹⁵ Furthermore, the high risk of infections occurring during the initial phase of treatment is a frequent clinical challenge, and the incidence of infectious complications prior to the advent of COVID-19 ranged from 30% to 50%.⁴

Even if not reaching statistical significance, we observed a lower mortality over time because most of the deaths related to COVID-19 occurred in 2020. This could be explained by improvements in therapeutic management of COVID-19, including early corticosteroid therapy¹⁶ as well as the protective effects of vaccination,¹⁷ because the 5 vaccinated patients survived.

This cohort suggests that HCL may be a risk factor for severe or critical COVID-19, and future work will evaluate the protective effect of vaccination and improvement of outcomes with monoclonal antibodies and antiviral therapies recently developed.

Contribution: S.L., J.S.-G., E.R.-M., C.B., and L. Pagano contributed to study design, study supervision, and data interpretation and wrote the paper; J.S.-G. is project manager of EPICOVIDEHA; L. Pagano is principal investigator of EPICOVIDEHA; all authors recruited participants; and all authors read and approved the final manuscript.

Conflict-of-interest disclosure: S.L. declared miscellaneous support from Janssen, Gilead, Roche, AbbVie, Sanofi, Novartis, Actelion, and Pfizer, declared some honorarium from Gilead, and received a research grant from Janssen. J.S.-G. received speaking honoraria from Gilead Nordica outside the submitted work. R.D. reported personal fees from Takeda, Novartis, and Biotest and nonfinancial support from Gilead outside the submitted work. C.B. reported research funding from Roche and nonfinancial support from Takeda and Roche. M. Marchetti is a consultant for Gilead. M.H. received research funding from MSD, Astellas, Pfizer, Scynexis, F2G, Euroimmun, Gilead, and NIH. R.C. reported advisory activities for Janssen, AbbVie, AstraZeneca, Takeda, Kite, Genmab, Incyte, and Kyowa-Kirin; reported speaker activities for Roche, Janssen, AbbVie, AstraZeneca, Takeda, and Kite; and received a research Grant from Pfizer. N.K. was board member for Gilead Science, MSD, and Pfizer, and has been speaker for Gilead Sciences, MSD, Pfizer, and Astellas Pharma. P.K. reported grants or contracts from German Federal Ministry of Research and Education (BMBF) B-FAST (Bundesweites Forschungsnetz Angewandte Surveillance und Testung) and NAPKON (Nationales Pandemie Kohorten Netz, German National Pandemic Cohort Network) of the Network University Medicine (NUM) and the State of North Rhine-Westphalia; Consulting fees from Ambu GmbH, Gilead Sciences, Mundipharma Resarch Limited, Noxxon N.V., and Pfizer Pharma; received honoraria for lectures from Akademie für Infektionsmedizin e.V., Ambu GmbH, Astellas Pharma, BioRad Laboratories, European Confederation of Medical Mycology, Gilead Sciences, GPR Academy Ruesselsheim, medupdate GmbH, MedMedia, MSD Sharp & Dohme GmbH, Pfizer Pharma GmbH, Scilink Comunicación Científica SC, and University Hospital and LMU Munich; participated on an advisory board for Ambu GmbH, Gilead Sciences, Mundipharma Resarch Limited, and Pfizer Pharma; has a pending patent currently reviewed at the German Patent and Trade Mark Office; and received other nonfinancial interests from Elsevier, Wiley, and Taylor & Francis online outside the submitted work. T.V. declared honorarium from Janssen, Amgen, Takeda, Roche, Novartis, AstraZeneca, Bristol Myers Squibb, Viatrix, Teva, Sanofi Genzyme, and Zentiva and served as advisory board member for Janssen, Amgen, Takeda, Roche, Novartis, AstraZeneca, Bristol Myers Squibb, and Sanofi Genzyme. J.B. reported honorarium and serving on advisory boards for Amgen, Janssen, and Takeda. M.-P.L. received honoraria from Gilead, Pfizer, Daiichi Sankyo, and Novartis as member of advisory boards and for participation in symposia. O.A.C. reported grants or contracts from Amplyx, Basilea, BMBF, Cidara, DZIF, EU-DG RTD (101037867), F2G, Gilead, Matinas, MedPace, MSD, Mundipharma, Octapharma, Pfizer, and Scynexis; received consulting fees from Amplyx, Biocon, Biosys, Cidara, Da Volterra, Gilead, Matinas, MedPace, Menarini, Molecular Partners, MSG-ERC, Noxxon, Octapharma, PSI, Scynexis, and Seres; received honoraria for lectures from Abbott, Al-Jazeera Pharmaceuticals, Astellas, Grupo

Biotoscana/United Medical/Knight, Hikma, MedScape, MedUpdate, Merck/MSD, Mylan, and Pfizer; received payment for expert testimony from Cidara; participated on a data safety monitoring board or advisory board for Actelion, Allecrea, Cidara, Entasis, IQVIA, Janssen, MedPace, Paratek, PSI, and Shionogi; has a patent at the German Patent and Trade Mark Office (DE 10 2021 113 007.7); and reported other interests from DGHO, DGI, ECOMM, ISHAM, MSG-ERC, and Wiley. The remaining authors declare no competing financial interests.

ORCID profiles: S.L., 0000-0001-5980-305X; J.S.-G., 0000-0002-6766-8297; O.J., 0000-0003-4026-285X; F.M., 0000-0001-6353-2272; M.Marchetti, 0000-0001-7615-0572; S.E.-A., 0000-0003-2210-1534; F.D., 0000-0002-1172-8668; T.V., 0000-0001-6083-8815; M.C.T., 0000-0001-8231-6700; Z.S., 0000-0001-7502-8356; G.C.S., 0000-0001-9433-2054; L.P., 0000-0003-1660-4960; M.Merelli, 0000-0003-3352-1163; A.L.-G., 0000-0002-5354-5261; M.-P.L., 0000-0002-3261-3616; A.K., 0000-0003-3180-3570; M.G.d.S., 0000-0002-6993-2450; Z.E., 0000-0003-0622-2598; R.F.D., 0000-0002-5240-9815; C.C., 0000-0003-0031-3237; O.B., 0000-0002-7167-7882; Y.M.B., 0000-0003-4854-5424; R.B., 0000-0002-7811-9509; J.B., 0000-0001-5595-9911; R.C., 0000-0002-7654-8836; J.E., 0000-0003-0926-5577; R.N.R., 0000-0002-8347-4281; M.V.S., 0000-0001-8133-3357; S. Z., 0000-0002-4075-8727; A.B., 0000-0001-5361-5613; P.C., 0000-0002-9186-1353; M.H., 0000-0002-1653-2824; N.K., 0000-0001-6095-7531; P.K., 0000-0002-7386-7495; A.P., 0000-0003-2519-0333; F.P., 0000-0001-8068-5289; R.D., 0000-0002-5024-1713; O.A.C., 0000-0001-9599-3137; C.B., 0000-0003-4364-7173; L.Pagano, 0000-0001-8287-928X.

Correspondence: Jon Salmanton-García, Faculty of Medicine and University Hospital Cologne, Cologne Excellence Cluster on Cellular Stress Responses in Aging-Associated Diseases (CECAD), University of Cologne, Cologne, Germany; Department I of Internal Medicine, Excellence Center for Medical Mycology (ECMM), Herderstraße 52-54, 50931 Cologne, Germany; e-mail: jon.salmanton-garcia@uk-koeln.de; and Sylvain Lamure, Department of Clinical Hematology, Montpellier University Hospital, IGMM UMR1535 CNRS, University of Montpellier, Montpellier, France; e-mail: sylvain.lamure@gmail.com.

References

1. Kreitman RJ. Hairy cell leukemia: present and future directions. *Leuk Lymphoma*. 2019;60(12):2869-2879.
2. Swerdlow SH, Campo E, Harris NL, et al. WHO Classification of Tumours of Haematopoietic and Lymphoid Tissues, vol. 2. Lyon, France: IARC; 2008.
3. Bouza E, Burgaleta C, Golde DW. Infections in hairy-cell leukemia. *Blood*. 1978;51(5):851-859.
4. Kraut E. Infectious complications in hairy cell leukemia. *Leuk Lymphoma*. 2011;52(suppl 2):50-52.
5. Grever MR, Abdel-Wahab O, Andritsos LA, et al. Consensus guidelines for the diagnosis and management of patients with classic hairy cell leukemia. *Blood*. 2017;129(5):553-560.
6. Seymour JF, Kurzrock R, Freireich EJ, Estey EH. 2-chlorodeoxyadenosine induces durable remissions and prolonged suppression of CD4+ lymphocyte counts in patients with hairy cell leukemia. *Blood*. 1994;83(10):2906-2911.

7. Tudesq J-J, Cartron G, Rivière S, et al. Clinical and microbiological characteristics of the infections in patients treated with rituximab for autoimmune and/or malignant hematological disorders. *Autoimmun Rev*. 2018;17(2):115-124.
8. Grever M, Andritsos L, Banerji V, et al. Hairy cell leukemia and COVID-19 adaptation of treatment guidelines. *Leukemia*. 2021;35(7):1864-1872.
9. Duléry R, Lamure S, Delord M, et al. Prolonged in-hospital stay and higher mortality after COVID-19 among patients with non-Hodgkin lymphoma treated with B-cell depleting immunotherapy. *Am J Hematol*. 2021;96(8):934-944.
10. Kohla S, Ibrahim FA, Aldapt MB, ELSabah H, Mohamed S, Youssef R. A rare case of hairy cell leukemia with unusual loss of CD123 associated with COVID-19 at the time of presentation. *Case Rep Oncol*. 2020;13(3):1430-1440.
11. Bellmann-Weiler R, Burkert F, Schwaiger T, et al. Janus-faced course of COVID-19 infection in patients with hematological malignancies. *Eur J Haematol*. 2020;105(4):502-504.
12. Salmanton-García J, Busca A, Cornely OA, et al. EPICOVIDEHA: a ready to use platform for epidemiological studies in hematological patients with COVID-19. *HemaSphere*. 2021;5(7):e612.
13. Wu Z, McGoogan JM. Characteristics of and important lessons from the coronavirus disease 2019 (COVID-19) outbreak in China: summary of a report of 72 314 cases from the Chinese Center for Disease Control and Prevention. *JAMA*. 2020;323(13):1239-1242.
14. Pagano L, Salmanton-García J, Marchesi F, et al; EPICOVIDEHA working group. COVID-19 infection in adult patients with hematological malignancies: a European Hematology Association Survey (EPICOVIDEHA). *J Hematol Oncol*. 2021;14(1):168.
15. Dasanu CA, Ichim TE, Alexandrescu DT. Inherent and iatrogenic immune defects in hairy cell leukemia: revisited. *Expert Opin Drug Saf*. 2010;9(1):55-64.
16. Group TRC. Dexamethasone in hospitalized patients with COVID-19. *N Engl J Med*. 2021;384:693–704.
17. Baden LR, El Sahly HM, Essink B, et al; COVE Study Group. Efficacy and safety of the mRNA-1273 SARS-CoV-2 vaccine. *N Engl J Med*. 2021;384(5):403-416.