

Synchronous anorectal melanoma

Baličević, Drinko; Tomić, Karla; Bešlin-Bekavac, Miroslav; Kovačević, Igor; Mijić, August; Belicza, Mladen; Krušlin, Božo

Source / Izvornik: **World Journal of Gastroenterology, 2006, 12, 3453 - 3455**

Journal article, Accepted version

Rad u časopisu, Završna verzija rukopisa prihvaćena za objavljivanje (postprint)

<https://doi.org/10.3748/wjg.v12.i21.3453>

Permanent link / Trajna poveznica: <https://um.nsk.hr/um:nbn:hr:105:533870>

Rights / Prava: [In copyright](#)/[Zaštićeno autorskim pravom.](#)

Download date / Datum preuzimanja: **2024-11-05**



Repository / Repozitorij:

[Dr Med - University of Zagreb School of Medicine
Digital Repository](#)





Središnja medicinska knjižnica

Baličević, D., Tomić, K., Bešlin-Bekavac, M., Kovačević, I., Mijić, A., Belicza, M., Krušlin, B. (2006) *Synchronous anorectal melanoma*. World journal of gastroenterology, 12 (21). pp. 3453-3455.

<http://www.wjgnet.com/1007-9327/12/3453.asp>

<http://medlib.mef.hr/227>

University of Zagreb Medical School Repository

<http://medlib.mef.hr/>

Synchronous anorectal melanoma

Running title: **Anorectal melanoma**

Drinko Baličević, Karla Tomić, Miroslav Bešlin-Bekavac, Igor Kovačević, August Mijić, Mladen Belicza, Božo Krušlin

Drinko Baličević, Božo Krušlin, Mladen Belicza, "Ljudevit Jurak" Department of Pathology, University Hospital Sestre Milosrdnice, Zagreb, Croatia

Karla Tomić, Department of Pathology, General Hospital Josip Benčević, Slavonski Brod, Croatia

Miroslav Bešlin-Bekavac, August Mijić, Department of Surgery, University Hospital Sestre Milosrdnice, Zagreb, Croatia

Kovačević Igor, Department of Gastroenterology, University Hospital Sestre Milosrdnice, Zagreb, Croatia

Correspondence to: Karla Tomić, MD

"Ljudevit Jurak" Department of Pathology, University Hospital Sestre Milosrdnice, Vinogradska 29, 10 000 Zagreb, Croatia, karlamed@yahoo.com

Telephone: +385-1-3787909; fax: +385-1-3787244

Received: 2005-12-23

Accepted: 2006-01-14

Abstract

Anorectal melanoma is a very rare tumor with poor prognosis. Rectal bleeding is the most frequent symptom and surgical treatment ranges from local excision to radical abdominoperineal resection. In this paper we report a case of a 75 years old male patient who presented with a history of recurrent rectal bleeding, and whose histopathological diagnosis was malignant melanoma. Macroscopically we found 2 distinct tumors in anorectal region, 0.5 and 1.5 cm from dentate line. First one was pedunculated, on a thin stalk, measuring 1 cm in greatest diameter, and the second one was sessile and nodular measuring up to 2.8 cm in largest diameter. Microscopic examination and immunohistochemical analysis of both tumors confirmed the diagnosis of melanoma.

After radical abdominoperineal resection specimens were formalin fixed, paraffin embedded, cut at 5µm and routinely stained with hematoxylin and eosin. We used primary antibodies to HMB-45 and S-100. DNA flow cytometry analysis was performed on a FACSCalibur flow cytometer (Becton Dickinson, San Jose, CA) showing aneuploidy in both tumors.

At present, the patient is well and without recurrence 6 months after initial diagnosis.

Key words: Mlanoma; Anorectal region; Satellite lesions; Synchronous melanomas

INTRODUCTION

Anorectal melanoma is a rare condition that accounts for 0.2 - 3% of all melanoma cases, and 0.1 - 4.6% of all malignant tumors of the rectum and anus^[1, 2, 3]. Melanoma is defined as "rectal" when it occurs in the rectum above the anorectal junction^[4], while anal canal is below anorectal line. Rectal bleeding was the most common reported symptom, and sometimes the importance of the bleeding is underestimated as it was assumed to be a sign of haemorrhoidal disease causing a delay in making the correct diagnosis and starting treatment^[4, 5]. Surgical treatment of this tumor ranges from the radical abdominoperineal resection with bilateral inguinal lymphadenectomy, to the conservative local excision alone^[4]. Long-term survival is very low; approximately 6.7% to 12% of patients were reported to be free of disease five years after their operations^[6, 7]. Most recent studies did not find correlation between tumor necrosis and blood vessel invasion and survival rate, while correlation of survival and tumor thickness is controversial. In the most studies, tumors evaluated by flow cytometry that showed aneuploidy correlated with poorer prognosis. S-phase fraction higher than 15% also correlated with a worse prognosis^[4, 5].

CASE REPORT

A 75 years old male presented with a history of recurrent rectal bleeding which had become more frequent and severe during the previous year. Colonoscopy revealed only one polypoid and fragile mass in the rectum, and obtained punch biopsy showed pigmented melanoma. Computed tomography (CT) scan and ultrasound did not find enlargement of regional lymph nodes. Concerning physical, CT scan and ultrasound examination patient was treated, like early stage of the disease, by radical abdominoperineal resection.

Pathologic examination of the received specimen revealed 2 distinct tumorous masses; the first one that was pedunculated, on a thin stalk, 0.5 cm above dentate line, measuring 1 cm in greatest diameter. The second one was sessile and nodular, 1.5 cm above dentate line, measuring up to 2.8 cm. Both tumors were bluish brown on cut sections (Figure 1A).

After surgery, all specimens were formalin fixed, paraffin embedded, cut at 5µm and routinely stained with hematoxylin and eosin. Deparaffinisation and immunohistochemical staining was performed following Microwave Streptavidin ImmunoPeroxidase (MSIP) protocol on DAKO TechMate™ Horizon automated immunostainer. We used primary antibodies to HMB-45 and S-100 (purchased from DAKO, Copenhagen, Denmark). Dilution of both antibodies was «ready to use». Microscopically, both tumors were composed of atypical spindle cells with prominent nucleoli and highly pigmented. First tumor, the smaller one, was covered with squamous epithelium, partially ulcerated, infiltrating mucosa and submucosa but without extension to the muscle layer. Mitotic rate was 10/10 HPF. The larger tumor was covered with partially ulcerated columnar epithelial cells, without muscle layer infiltration (Figure 1B). Mitotic rate was 13/10 HPF. Tumor thickness, measured by computer program, was 5.75 mm for the smaller tumor, and 9.11 mm for the larger one. Both tumors showed immunohistochemically positive reaction for HMB-45 and S-100 (Figure 1C).

Paraffin embedded specimens were processed for the flow cytometry. Cellular DNA content and proliferative activity were analyzed on a FACSCalibur flow cytometer (Becton Dickinson, San Jose, CA) by using excitation wave-length at 488 nanometers and 15-milliwatt argon ion laser. DNA histograms were generated on at least 20 000 nuclear events with a Mod-FitLT V2.0 (Verity Software House Inc., Topsham, ME and Becton Dickinson).

DNA flow cytometry analysis showed two aneuploid peaks (hypodiploid and hyperdiploid populations) in both tumors, but with different DNA indexes and S-phase fractions (Figure 2A, 2B). S-phase fraction for the polyploid tumor, covered with squamous epithelium was 11.84%, and for the nodular one, covered with columnar epithelium was 26.82%.

DISCUSSION

Anorectal melanoma is a very rare neoplasm, and in the reviewed literature we did not find any similar case of anorectal melanoma, either with satellite lesion or with multiple melanomas in anorectal region. We found only one reported case of metachronous melanoma in the upper digestive system, involving esophagus and stomach^[8]. Case presented in this paper is specific by reporting two, synchronous melanomas, of which one of the tumors was found in anal canal, and it was partially covered by ulcerated squamous epithelium, while another one was in rectum, covered with partially ulcerated columnar epithelium. Between described tumors there was an area of normal rectal mucosa without tumor involvement. For almost 30 years patient had recurrent bleeding because of haemorrhoidal disease, which probably caused delay in making a correct diagnosis. Although some authors did not find difference in overall survival between patients treated with local excision and those with abdominoperineal resection^[2, 9], the study from the Memorial Sloan Kettering Cancer Center by Brady *et al.* suggested abdominoperineal resection as a better approach for patients without advanced disease, because patients treated with abdominoperineal resection were more commonly associated with better long-term survival than patients treated with other procedures^[4, 6]. After physical, CT scan and ultrasound examination which did not find any signs of metastatic disease, patient was treated by radical abdominoperineal resection.

The most important doubt in this case is the nature of both lesions. Are they both primary anorectal melanoma or is one of the two tumor primary, and which one, and the second one is probably a satellite lesion?

In skin melanomas satellite lesions are defined as tumor nests or nodules within 2 cm of the primary tumor, while in-transit metastasis involves skin or subcutaneous tissue more than 2 cm from the primary tumor, but not beyond the regional lymph nodes. The significance of their presence is seen in survival studies, where lymph node metastasis is one of the most important predictor factors of survival in melanoma patients, and presence and number of involved lymph nodes is more important than actual gross dimension of the involved lymph node. In new melanoma staging system, patients with in-transit metastases or satellite lesions without lymph node disease have a similar prognosis to those with positive lymph node metastases. In the revised staging system, these patients are now

upstaged as having N2c disease compared to the 1997 staging system in which these patients were considered as having T4 disease^[10].

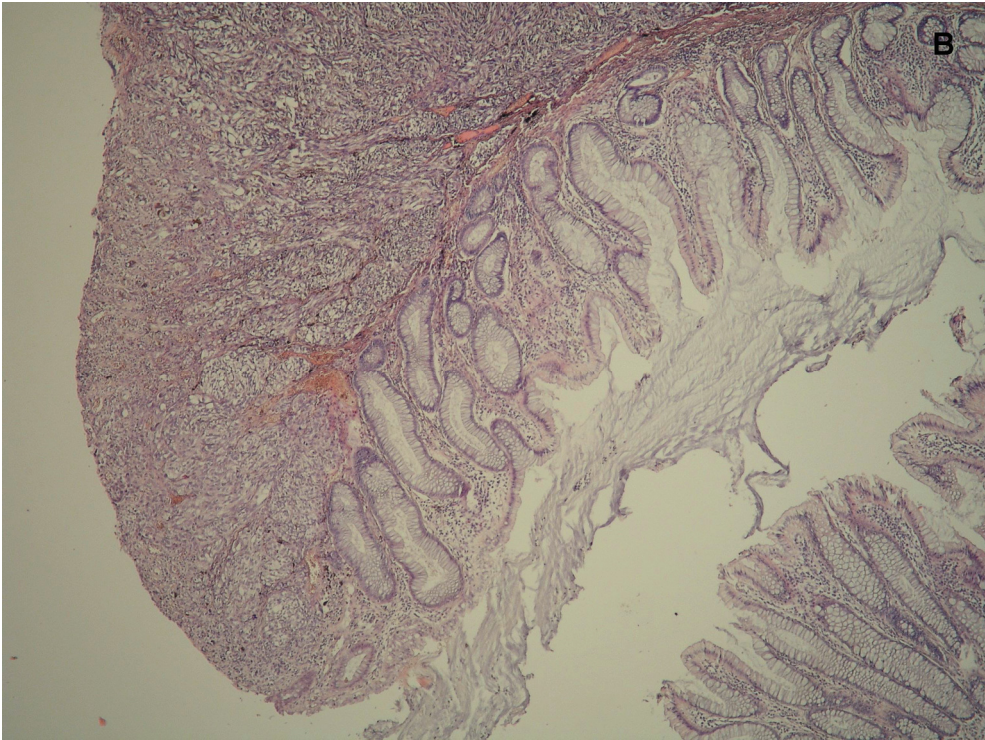
In presented case it is possible that one of the lesions is primary tumor and the second one is the satellite lesion. Concerning colonoscopy, which was performed few months before surgery, and which found only one polypoid tumor, it is possible that the smaller tumor is primary, and the second one is a satellite lesion. Hypothesis that one of the tumors is a satellite lesion is also supported with histological findings, because both tumors are composed of the same histological type. However, the surface of both tumors is ulcerated, making very difficult to establish connection of the tumor cells with the surface, and concerning different S-fases on DNA flow cytometry there is still a possibility that this is the case of a multiple synchronous primary melanoma in anal canal and rectum.

Importance of distinguishing exact nature of found lesions, if we could apply the same rules as for staging cutaneous melanoma, is in better staging and predicting prognosis.

REFERENCES

- 1 Goldman S**, Glimelius Babuche, Pahlman L. Anorectal malignant melanoma in Sweden: Report of 49 patients. *Dis Colon Rectum* 1990;**33**:874-877 [PMID: 1698595]
- 2 Thibault C**, Sagar P, Nivatvongs S, Ilstrup DM, Wolff BG. Anorectal melanoma-an incurable disease? *Dis Colon Rectum* 1997;**40**:661-668 [PMID: 9194459]
- 3 Weinstock MA**. Epidemiology and prognosis of anorectal melanoma. *Gastroenterology* 1993;**104**:174-178 [PMID: 8419240]
- 4 Pantalone D**, Taruffi F, Paolucci R, Liguori P, Rastrelli M, Andreoli F. Malignant melanoma of the rectum. *Eur J Surg* 2000;**166**:583-584 [PMID: 10965842]
- 5 Ben-Izhak O**, Levy R, Weill S, Groisman G, Cohen H, Stajerman S, Misselevich I, Nitecky S, Eidelman S, Kerner H. Anorectal malignant melanoma. A clinicopathologic study, including immunohistochemistry and DNA flow cytometry. *Cancer* 1997;**79**:18-25 [PMID: 8988722]
- 6 Brady MS**, Kavolius JP, Quan SH. Anorectal melanoma. A 64-year experience at Memorial Sloan Kettering Cancer Center (review). *Dis Colon Rectum* 1995;**38**:146-151 [PMID: 7851168]
- 7 Cooper PH**, Mills SE, Allen MS Jr. Malignant melanoma of the anus: report of 12 patients and analysis of 255 additional cases. *Dis Colon Rectum* 1982;**25**:693-703 [PMID: 7128372]
- 8 Dabrowski A**, Zinkiewicz K, Szumilo J, Zgodzinski W, Cwik G, Skoczylas T, Wallner G. Unusual clinical course of metachronous melanomas of the upper digestive system. *World J Gastroenterol* 2005;**11**:2197-2199. [PMID: 15810093]
- 9 Slingluff Jr CL**, Vollmer RT, Seigler HF. Anorectal melanoma: clinical characteristics and results of surgical management in twenty-four patients. *Surgery* 1990;**107**:1-9 [PMID: 2296748]
- 10 Kim CJ**, Reintgen DS, Balch CM; AJCC Melanoma staging Committee. The new melanoma staging system. *Cancer Control* 2002;**9**:9-15 [PMID: 11907461]

Figure 1. A: Macroscopical appearance of anorectal region with two melanomas; B: Photomicrograph of rectal melanoma covered with columnar epithelium (H&E, original magnification x100); C: Photomicrograph of anal melanoma covered with squamous epithelium showing strongly positive immunostaining for HMB-45 (original magnification x200).



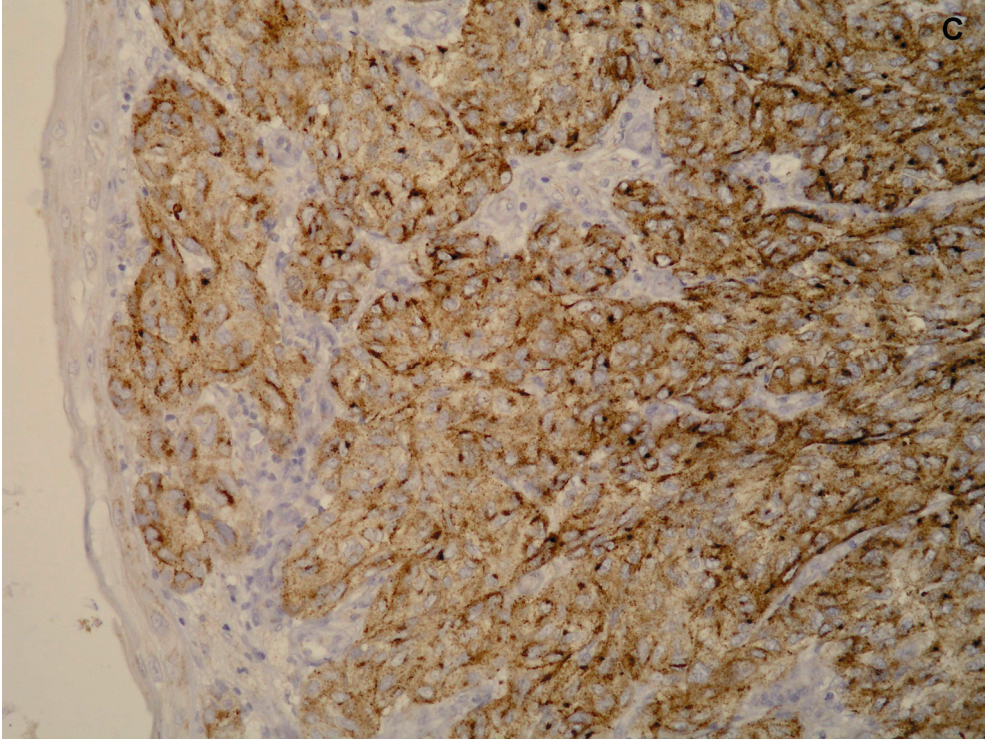


Figure 2. DNA histograms. A: Smaller tumor with two aneuploid peaks: left peak-hypodiploid population with DNA index of 1.22; right peak-hyperdiploid population with DNA index of 2.22. Middle peak-the diploid population of non tumoral cells. B: Larger tumor with two aneuploid peaks: left peak-hypodiploid population with DNA index of 1.32; right peak-hyperdiploid population with DNA index of 2.33. Middle peak-the diploid population of non tumoral cells.

