

Carcinosarcoma de novo of the parotid gland with unusual sarcomatous component

Tomas, Davor; Vagić, Davor; Bedeković, Vladimir; Krušlin, Božo

Source / Izvornik: **Brazilian Journal of Otorhinolaryngology, 2014, 80, 364 - 365**

Journal article, Published version

Rad u časopisu, Objavljena verzija rada (izdavačev PDF)

<https://doi.org/10.1016/j.bjorl.2014.05.002>

Permanent link / Trajna poveznica: <https://um.nsk.hr/um:nbn:hr:105:024591>

Rights / Prava: [In copyright](#) / [Zaštićeno autorskim pravom.](#)

Download date / Datum preuzimanja: **2024-11-22**



Repository / Repozitorij:

[Dr Med - University of Zagreb School of Medicine
Digital Repository](#)





CASE REPORT

Carcinosarcoma *de novo* of the parotid gland with unusual sarcomatous component[☆]



Carcinossarcoma *de novo* da parótida com componente sarcomatoso incomum

Davor Tomas^{a,*}, Davor Vagic^b, Vladimir Bedekovic^b, Bozo Kruslin^a

^a Department of Pathology, Clinical Hospital Centre Sestre Milosrdnice, Zagreb, Croatia

^b Department of Otorhinolaryngology, Head and Neck Surgery, Clinical Hospital Centre Sestre Milosrdnice, Zagreb, Croatia

Received 5 September 2012; accepted 20 October 2012

Available online 23 May 2014

Introduction

Salivary gland carcinosarcoma is an exceedingly rare and aggressive neoplasm composed of a mixture of carcinomatous and sarcomatous components, with either component capable of metastasis. Salivary gland carcinosarcoma can arise in pleomorphic adenoma (PA) or *de novo*.¹

The present study reports a case of the parotid gland *de novo* carcinosarcoma, which contained salivary duct adenocarcinoma and sarcoma that resembled malignant fibrous histiocytoma (MFH). To the authors' knowledge, MFH as a component of salivary gland carcinosarcoma has been described only once in literature, and was combined with squamous cell carcinoma.²

Case presentation

A 45-year-old man presented with a mass in the right parotid gland that had been rapidly enlarging for eight weeks. Pre-operative ultrasound showed a tumor in the parotid gland but without sign of metastasis in regional lymph nodes.

The patient underwent right total parotidectomy, and gross inspection revealed a relatively well-defined, gray-white, homogeneous, solid tumor that measured 2.5 cm in the largest diameter.

Microscopically, the tumor was composed of two malignant components, carcinoma and sarcoma (Fig. 1A). The former consisted of salivary duct adenocarcinoma with typical foci of comedonecrosis. The latter was composed of markedly atypical, large polygonal cells with abundant eosinophilic, focally foamy cytoplasm, with multilobated to multiple nuclei, admixed with a population of spindle cells arranged in short fascicles. Mitotic figures were readily identified; some were atypical. Thus, the mesenchymal component of the tumor histologically corresponded to MFH (Fig. 1B). Immunohistochemistry showed that the carcinomatous component was positive for cytokeratin AE1/AE3, cytokeratin 7, CEA, and HER2 (Fig. 1C). The sarcomatous component was diffusely positive for vimentin. p53 showed focal, nuclear positivity in both malignant components (Fig. 1D).

The multiple sections showed no evidence of a pre-existing PA, and diagnosis of *de novo* carcinosarcoma of the parotid gland composed of salivary duct adenocarcinoma and sarcoma that resembled MFH was established.

Discussion

Salivary gland carcinosarcomas are rare, and therefore a well established therapeutic approach is lacking. In some

[☆] Please cite this article as: Tomas D, Vagic D, Bedekovic V, Kruslin B. Carcinosarcoma *de novo* of the parotid gland with unusual sarcomatous component. Braz J Otorhinolaryngol. 2014;80:364–5.

* Corresponding author.

E-mail: davor.tomas1968@gmail.com (D. Tomas).

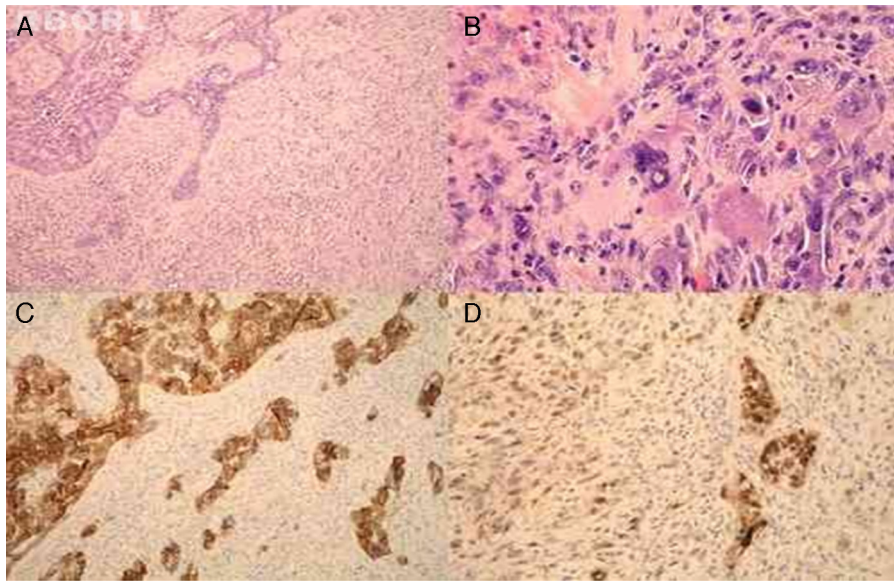


Figure 1 The tumor was composed of two different malignant components, carcinoma (left) and sarcoma (right) (A, $\times 100$, HE). The sarcomatous component morphologically corresponded to malignant fibrous histiocytoma (B, $\times 400$, HE). Immunohistochemically, the carcinoma was positive for HER2 (C, $\times 100$, HER2). p53 showed focal, nuclear positivity in both malignant components (D, $\times 200$, p53).

cases, patients were treated only with surgery, but the most common treatment includes a combination of surgery and radiotherapy. Despite aggressive therapy, local recurrence and metastases occur frequently; the mean survival is approximately 19 months.¹

The present patient was additionally treated with radiotherapy (48 Gy in 16 fractions, twice a day); nine months after surgery, the patient showed no sign of local recurrence or distant metastasis.

It is still unclear whether the two malignant components in carcinosarcoma of salivary glands occur by collision of two independent tumors, or they are of clonal origin. The first studies based on immunohistochemical analysis indicated that the distinct cellular entities reflect two independent neoplastic processes.^{2,3} More recent molecular studies demonstrated that the two histologically different components would result from a dichotomous differentiation pattern of a common stem cell, or by trans-differentiation from one cell type to another.⁴⁻⁶ Fowler et al.⁴ tested loss-of-heterozygosity rates at loci of known tumor suppressors in carcinosarcomas and found a 73% agreement in the mutational profiles of the two components. Vékony et al.,⁵ using comparative genomic hybridization, observed a 75% homology between the DNA copy numbers in epithelial and mesenchymal components of parotid gland carcinosarcoma. Furthermore, Völker et al.⁶ demonstrated the losses on chromosome 13 in PA and the sarcomatous component of carcinosarcoma, and concluded that this could represent an early event in differentiation of a common pluripotent stem cell line

Final remarks

In the present case, p53 expression in carcinomatous and sarcomatous cells could indicate identical early events in the

carcinogenesis of both malignant components. Therefore, despite morphological and immunohistochemical differences between epithelial and mesenchymal components, the authors believe that both elements of carcinosarcoma have evolved from a single common precursor cell, probably a myoepithelial cell.

Conflicts of interest

The authors declare no conflicts of interest.

References

1. Barnes EL, Eveson JW, Reichart P, Sidransky D, editors. World Health Organization classification of tumours. Pathology and genetics of head and neck tumors. Lyon, France: IARC Press; 2005.
2. Latkovich P, Johnson RL. Carcinosarcoma of the parotid gland: report of a case with cytohistologic and immunohistological findings. *Arch Pathol Lab Med.* 1998;122:743-6.
3. Bleiweiss IJ, Huvos AG, Lara J, Strong EW. Carcinosarcoma of the submandibular salivary gland. Immunohistochemical findings. *Cancer.* 1992;69:2031-5.
4. Fowler MH, Fowler J, Ducatman B, Barnes L, Hunt JL. Malignant mixed tumors of the salivary gland: a study of loss of heterozygosity in tumor suppressor genes. *Mod Pathol.* 2006;19:350-5.
5. Vekonye Vekony H, Leemans CR, Ylstra B, Meijer GA, van der Waal I, Bloemena E. Salivary gland carcinosarcoma: oligonucleotide array CGH reveals similar genomic profiles in epithelial and mesenchymal components. *Oral Oncol.* 2009;45:259-65.
6. Völker HU, Mühlmeier G, Maier H, Kraft K, Müller-Hermelink HK, Zettl A. True malignant mixed tumour (carcinosarcoma) of submandibular gland – a rare neoplasm of monoclonal origin? *Histopathology.* 2007;50:795-8.