

Rituximab with dose-adjusted EPOCH as first-line treatment in patients with highly aggressive diffuse large B-cell lymphoma and autologous stem cell transplantation in selected patients

Pejša, Vlatko; Prka, Željko; Lucijanić, Marko; Mitrović, Zdravko; Piršić, Mario; Jakšić, Ozren; Ajduković, Radmila; Kušec, Rajko

Source / Izvornik: **Croatian Medical Journal, 2017, 58, 40 - 48**

Journal article, Published version

Rad u časopisu, Objavljena verzija rada (izdavačev PDF)

<https://doi.org/10.3325/cmj.2017.58.40>

Permanent link / Trajna poveznica: <https://um.nsk.hr/um:nbn:hr:105:668434>

Rights / Prava: [In copyright](#) / [Zaštićeno autorskim pravom.](#)

Download date / Datum preuzimanja: **2024-07-06**



Repository / Repozitorij:

[Dr Med - University of Zagreb School of Medicine
Digital Repository](#)



Rituximab with dose-adjusted EPOCH as first-line treatment in patients with highly aggressive diffuse large B-cell lymphoma and autologous stem cell transplantation in selected patients

Vlatko Pejša^{1,2}, Željko Prka¹, Marko Lucijanić¹, Zdravko Mitrović^{1,2}, Mario Piršić¹, Ozren Jakšić^{1,2}, Radmila Ajduković¹, Rajko Kušec^{1,2}

¹Department of Hematology, University Hospital Dubrava, Zagreb, Croatia

²School of Medicine, University of Zagreb, Zagreb, Croatia

Aim To assess the benefit of rituximab with dose-adjusted etoposide, prednisone, vincristine, cyclophosphamide, and doxorubicin (R-DA-EPOCH) regimen as a first-line treatment for patients with diffuse large B-cell lymphoma (DLBCL) presenting with unfavorable or aggressive features, and autologous stem cell transplantation (ASCT) as a part of the first-line treatment for selected DLBCL patients with additional aggressive features.

Methods We retrospectively analyzed 75 newly diagnosed DLBCL patients with Ki-67+≥80% or International Prognostic Index ≥2 who were treated with R-DA-EPOCH between 2005 and 2015. Of 24 DLBCL patients with additional aggressive features (Ki-67+≥90% or age-adjusted IPI≥2) who were planned to receive consolidation with ASCT, 17 patients underwent the procedure. We determined the overall response rate (ORR), complete remission (CR), partial remission (PR), 5-year overall survival (OS), and progression free survival (PFS) in all DLBCL patients and specifically those planned to receive ASCT.

Results All 75 patients included in the analysis started one or more cycles of therapy. The ORR, CR, and PR rates were 80%, 55%, and 25%, respectively. The response was non-evaluable in 10 of 75 patients due to treatment discontinuation. The OS and PFS rates for all 75 patients were 70% and 61%, respectively, and 80% and 79%, respectively, for 24 planned-to-receive-ASCT patients. Age (≤65 vs >65 years) had no prognostic impact on OS and PFS ($P=0.994$ and $P=0.827$, respectively).

Conclusion Our retrospective analysis of one of the largest DLBCL patient cohorts outside the US National Cancer Institute showed that R-DA-EPOCH is a very effective therapeutic option as a first-line treatment of DLBCL patients with unfavorable prognostic features irrespective of their age. ASCT provided additional benefit for DLBCL patients with additional aggressive features.

Received: August 10, 2016

Accepted: February 13, 2017

Correspondence to:

Vlatko Pejša
Department of Hematology
University Hospital Dubrava
Av. Gojka Šuška 6
10000 Zagreb, Croatia
vpejsa@kdb.hr

Diffuse large B-cell lymphoma (DLBCL) is the most common aggressive type of B-cell lymphoma (1). It has multiple morphologic variants and heterogeneous molecular background (2). DLBCL treatment failure depends on a variety of factors, including tumor biology, tumor volume, pharmacokinetics, and pharmacogenomics (3-5). Various prognostic scores were developed to differentiate patients with unfavorable prognosis. The International Prognostic Index (IPI) (6,7) and its derivative, the revised IPI (R-IPI) (8), are the primary clinical tools for outcome prediction in the era of R-CHOP, an immunochemotherapy regimen combining rituximab, cyclophosphamide, doxorubicin hydrochloride, vincristine sulfate, and prednisone. The age-adjusted IPI (aaIPI) has also been extensively used in the studies adopting intensive treatment approaches, such as high-dose therapy and stem cell transplantation (9,10). Even though R-CHOP has been a gold standard in DLBCL therapy, there are raising concerns about the efficacy of this regimen, especially in younger patients with poor prognostic factors (11). Several R-CHOP modifications were explored with the intention to improve upfront treatment but did not provide any significantly better results due to greater toxicity (12-15). However, some aggressive alternative regimens improved the outcomes in selected groups of patients, but their applicability has been restricted to younger patients due to high acute and long-term toxicities (16,17).

A dose-adjusted regimen combining etoposide, prednisone, vincristine, cyclophosphamide, and doxorubicin (DA-EPOCH) was developed as a continuous infusion regimen relying on a concept that tumor cells display relatively less resistance to a prolonged drug exposure in comparison with brief higher concentration exposure (18). Dynamic dose adjustments according to patient's bone marrow status (observed as the absolute neutrophil and platelet counts) allow for the use of the highest acceptable doses of drugs, while avoiding additional toxicity and improving the results (19). Thus, this treatment approach is suitable for older patients. Rituximab with DA-EPOCH (R-DA-EPOCH) demonstrated efficacy in treatment of patients with DLBCL (20-22). Superior progression-free survival has been observed in a subset of DLBCL patients harboring c-myc and bcl-2 rearrangements, termed "double hit" lymphomas, treated with R-DA-EPOCH regimen in comparison to R-CHOP regimen-treated patients (23,24). The role of autologous stem cell transplantation (ASCT) as part of a first-line therapy in DLBCL is still unresolved. Although it is generally not recommended because it has no impact on the overall survival (25), it might have a role in first-line treatment of patients with poor prognostic features (11,26,27).

The aim of our study was to determine the benefit of R-DA-EPOCH regimen as a first-line treatment for DLBCL patients presenting with unfavorable or aggressive features and ASCT as part of first-line treatment in a subgroup of DLBCL patients with additional aggressive features.

PATIENTS AND METHODS

This retrospective cohort study was performed at the Department of Hematology, University Hospital Dubrava in Zagreb, Croatia, from May 2005 to December 2015.

Patients

A total of 75 patients with newly diagnosed DLBCL and unfavorable prognostic features, defined as a very high proliferative index Ki-67+≥80% and/or IPI≥2, were treated with R-DA-EPOCH regimen during the study period (Table 1). A subset of 24 DLBCL patients who initially presented

TABLE 1. Characteristics, treatment, and clinical outcomes in all patients with diffuse large B cell lymphoma (DLBCL) and a subgroup of DLBCL patients planned to receive autologous stem cell transplantation (ASCT)*

Characteristics	No. of DLBCL patients	
	total (n = 75)	planned to receive ASCT (n = 24)
Sex (male/female)	42/33	12/12
Age (years; median, IQR)	61 (47-71)	50 (41-57)
Ann Arbor III & IV	61	21
High LDH	57	21
ECOG≥2	26	11
>1 extranodal presentation	37	12
Bulky disease	28	11
Ki-67≥80%	31	8
Ki-67≥90%	18	7
B symptoms	37	15
IPI≥2	64	20
Age-adjusted IPI≥2	-	18
R-IPI poor risk	45	12
R-DA-EPOCH cycles (median, IQR)	6 (6-8)	7 (6-7)
ASCT transplantation	17	17
CD34+ cells mobilized with EPOCH	-	18/21†
Irradiation	7	2

*Abbreviations: IQR – interquartile range; LDH – lactate dehydrogenase; ECOG – Eastern Cooperative Oncology Group; B symptoms – fever, weight loss, and night sweats; IPI – International Prognostic Index; R-IPI – revised IPI; R-DA-EPOCH – rituximab plus dose-adjusted regimen combining etoposide, prednisone, vincristine, cyclophosphamide, and doxorubicin.

†Three patients planned to receive ASCT died prior to stem cell mobilization.

with additional aggressive features (Ki-67+ \geq 90% and/or aalPI \geq 2) and had no transplant-limiting comorbidities were planned to undergo ASCT as part of first-line therapy. Seven patients received concomitant radiation therapy. All patients provided written informed consent for therapy.

Chemotherapeutic regimen

Original DA-EPOCH regimen (20) consists of continuous intravenous infusion of etoposide 50 mg/m²/d on days 1 to 4, oral prednisone 60 mg/m²/d on days 1 to 5, continuous infusion of vincristine (Oncovine) 0.4 mg/m²/d on days 1 to 4, cyclophosphamide 750 mg/m²/d administered intravenously over 15 minutes on day 5, continuous infusion of doxorubicin (Hydroxydaunorubicin) 10 mg/m²/d on days 1 to 4, and filgrastim 5 μ g/kg administered subcutaneously from day 6 until the absolute neutrophil count (ANC) reaches 10×10^9 /L. The regimen is repeated every three weeks. DA-EPOCH regimen was administered according to original schedule with only one difference that pegylated filgrastim was administered instead of daily filgrastim on day 6 of regimen since it became available in Croatia. All patients had peripheral central line (PICC) inserted before the therapy.

Response evaluation was performed after four cycles of therapy. In case of complete remission (CR), patients received additional two cycles. Otherwise, they received additional four cycles, ie, a total of eight cycles, with the final evaluation performed after the treatment completion. All patients received six to eight cycles of rituximab concomitantly. All patients received *Pneumocystis jiroveci* pneumonia prophylaxis with trimethoprim-sulfamethoxazole twice a day, three times a week. Some patients also received antiviral and antifungal prophylaxis with acyclovir and fluconazole at physician's discretion.

ASCT treatment

In patients undergoing ASCT, the last cycle of DA-EPOCH was used as a stem cell mobilization regimen. In these settings, filgrastim administration was postponed after ANC nadir was reached, approximately 7-10 days after the last cycle of therapy. If unsuccessful, mini-BEAM (carmustine, etoposide, cytarabine, melphalan) chemotherapy or plerixafor were used before the stem cell apheresis. BEAM regimen was used for myeloablation.

Method

All patients that started one or more cycles of therapy or were planned to receive ASCT as a part of a first

line therapy were included into analyses, thereby mimicking intention to treat approach. Response to therapy was reported as overall response rate (ORR), complete remission (CR), partial remission (PR), progressive disease, and non-evaluable if treatment had to be discontinued before the disease evaluation could be performed due to reasons other than disease progression. Survival endpoints including death for overall survival (OS) and death, progression, and relapse for progression free survival (PFS) were calculated from the first day of therapy to the day of death, disease progression, relapse, or last follow-up as appropriate. Patients who discontinued R-DA-EPOCH due to toxicity and continued treatment with alternative regimen were censored at the time of treatment discontinuation. Patients who discontinued R-DA-EPOCH due to disease progression or died during the treatment were marked as achieving an endpoint.

Statistical analysis

Normality of distribution of numerical variables was tested using the Kolmogorov-Smirnov test. Since most numerical variables were non-normally distributed, they are presented as medians with interquartile range (IQR). Categorical variables were presented as proportions. Survival analyses were performed using Kaplan-Meier method (28) and the log-rank test (29). The median follow-up was estimated using reverse Kaplan-Meier estimator (30). Data were screened using custom made MS Excel workbook (31) and reanalyzed using MedCalc Statistical Software version 16.2.0 (MedCalc Software bvba, Ostend, Belgium). $P < 0.05$ was considered statistically significant.

RESULTS

Clinical outcomes

The response to therapy was achieved in 60 of 75 treated patients (ORR 80%). Of 75 treated patients, 41 (55%) achieved CR, 19 (25%) achieved PR, and 5 (7%) had progressive disease. The response was non-evaluable in 10 of 75 patients due to treatment discontinuation. When analyzed in evaluable patients only, response rates were 60/65 (92%), 41/65 (63%), and 5/65 (29%) for ORR, CR, and PR, respectively.

The 3-year and 5-year OS rates for all DLBCL patients were 75% and 70%, respectively. The median follow-up time was 29 months, and the median survival time was not reached (Figure 1). The 3-year and 5-year PFS rates for all DLBCL pa-

tients were both 61%. The median follow-up time was 39 months, and the median survival time was not reached (Figure 2). As expected, patients achieving CR had superior OS than patients achieving PR (HR 0.11; $P=0.001$) or not achieving remission at all (HR 0.02; $P<0.001$). Age (65-year cut-off) had no prognostic impact on OS (Figure 3) or PFS (Figure 4). We did not observe any significant effect of other IPI-contained risk factors (the Eastern Cooperative Oncology Group [ECOG] performance status ≥ 2 , involvement of more than one extranodal site, increased lactate dehydrogenase [LDH], and advanced Ann Arbor stage ≥ 3) on OS or PFS. Accordingly, neither IPI nor R-IPI had a prognostic significance for OS or PFS in our cohort of patients. R-IPI-defined poor-risk group of patients showed very good survival rates: 4-year OS and PFS rates with 95% confidence intervals were 78% (64%-91%) and 61% (45%-77%), respectively.

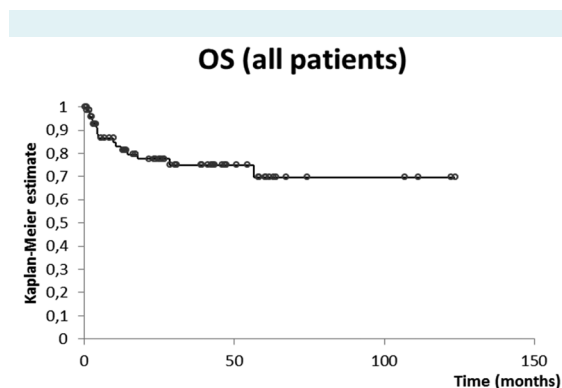


FIGURE 1. Overall survival (OS) in all 75 patients with diffuse large B-cell lymphoma. The 5-year and 3-year survival rates were 75% and 70%, respectively.

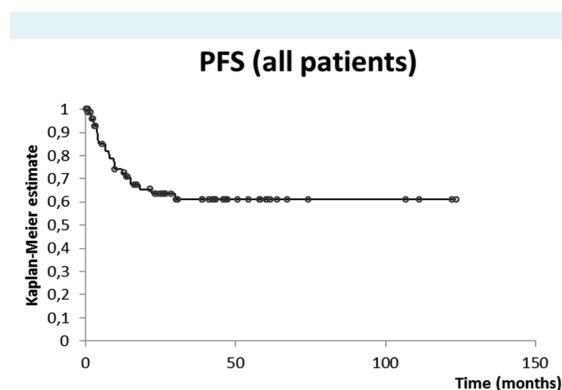


FIGURE 2. Progression free survival (PFS) in all 75 patients with diffuse large B-cell lymphoma. The 5-year and 3-year survival rates were both 61%.

Feasibility

The 75 patients included in the study received a total of 455 cycles of therapy. The median number of administered cycles was six per patient (IQR 6-8). Dose adjustment was assessed in 71 patients with available data who received a total of 428 cycles. Doses were escalated in 134/428 (31%) cycles, lowered in 27/428 (6%) cycles, and unchanged in 196/428 (46%) cycles, whereas 71/428 (17%) first cycles represent the difference to 100%. The median number of cycles with dose escalation was two per patient (IQR 0-3) and reaching up to 249% of the initial dose in individual patients (dose escalated 4 times).

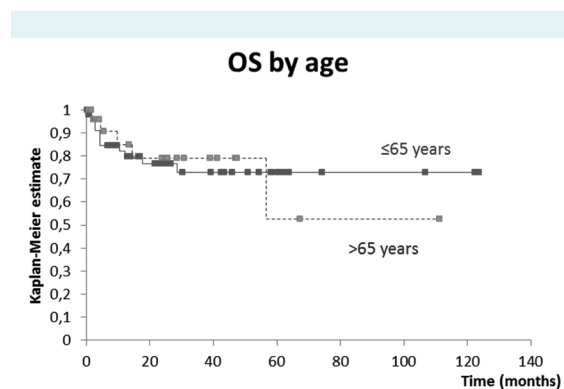


FIGURE 3. Age impact on overall survival (OS) in all 75 patients with diffuse large B-cell lymphoma. There was no difference in OS between patients aged ≤ 65 years (full line) and >65 years (dashed line), $P=0.994$.

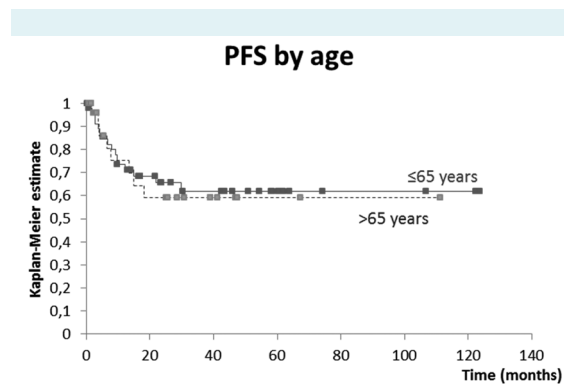


FIGURE 4. Progression free survival (PFS) in all 75 patients with diffuse large B-cell lymphoma. There was no difference in PFS between patients aged ≤ 65 years (full line) and >65 years (dashed line), $P=0.827$.

Hematological and non-hematological toxicities

Hematological toxicity during the treatment was assessed in 63 patients with available data who received a total of 371 cycles (Table 2). Hematologic toxicity grade 3 or 4 according to National Cancer Institute Common Terminology Criteria for Adverse Events (NCI CTCAE), version 4.0 (32), was detected in all analyzed patients due to toxicity-tailored nature of the regimen itself (dose adjustment according to ANC). All patients with febrile neutropenia were hospitalized and treated accordingly. The median number of cycles with febrile neutropenia was one per patient (IQR 0-2). The median cycle of febrile neutropenia occurrence was cycle four (IQR 2-5).

R-DA-EPOCH had to be discontinued in 9 of 75 patients due to inability to comply with regimen-related logistic requirements (six-day hospitalization, frequent blood sampling between cycles, PICC hygiene), treatment-related toxicity or unsatisfactory disease response to therapy. Nine of 75 patients died during the treatment. Three patients died due to disease progression and six died due to toxicities including fatal sepsis originating in the respiratory tract (n=2) or skin (n=2; one catheter-related), fatal hepatitis B reactivation (n=1), and thrombocytopenia-associated fatal gastrointestinal hemorrhage (n=1). We observed no significant doxorubicin-related cardiac toxicities. No secondary malignancies were detected.

TABLE 2. Treatment-related hematological and non-hematological toxicities in patients with diffuse large B cell lymphoma

	No. (%) of cycles	No. (%) of patients
Hematological toxicities*		
anemia (grade 3 or 4)	65/371 (18.0)	36/63 (57.0)
thrombocytopenia (grade 3 or 4)	63/371 (17.0)	35/63 (56.0)
neutropenia (grade 4)	152/371 (41.0)	58/63 (92.0)
febrile neutropenia	66/371 (18.0)	40/63 (63.0)
Non-hematological toxicities		
venous thrombosis	-	9/75 (12.0)
catheter-related	-	7/75 (9.0)
cerebrovascular infarction	-	1/75 (1.0)
polyneuropathy gr. ≥ 2	-	11/75 (15.0)
gastrointestinal hemorrhage	-	3/75 (4.0)
hepatitis B reactivation	-	1/75 (1.0)
hemorrhagic cystitis	-	1/75 (1.0)
Treatment discontinuation	-	9/75 (12.0)
Deaths during treatment	-	9/75 (12.0)

*Data available for 63 patients who received a total of 371 cycles.

ASCT subcohort

In the subset of 24 patients planned to receive ASCT, ORR was achieved in 21, CR in 15, and PR in 6 patients, whereas the response was not evaluable in 2 patients. The 3-year and 5-year OS rates were 80%. The median follow-up time was 43 months, whereas the median survival time was not reached (Figure 5). The 3-year and 5-year PFS rates in these 24 patients were both 79%. The median follow-up time was 43 months, and the median survival time was not reached (Figure 6).

Of 24 patients who were planned to receive ASCT, three died during the R-DA-EPOCH treatment (two due to infective complications and one due to disease progression). In 21 patients who completed R-DA-EPOCH, the last cycle

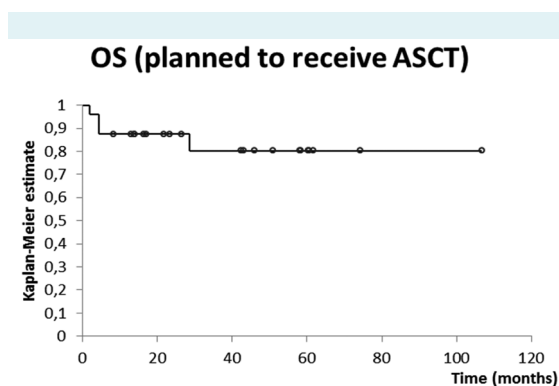


FIGURE 5. Overall survival (OS) in 24 patients with diffuse large B-cell lymphoma planned to receive autologous stem cell transplantation (ASCT).

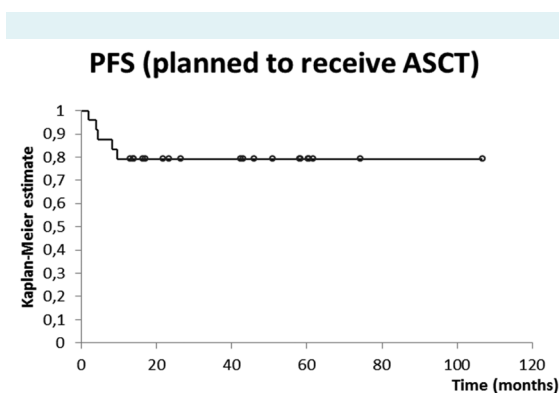


FIGURE 6. Progression free survival (PFS) in 24 patients with diffuse large B-cell lymphoma planned to receive autologous stem cell transplantation (ASCT).

of DA-EPOCH was used as a stem cell mobilizing regimen with 86% success rate (18 of 21 patients). The median time from the start of last cycle to the first stem cell apheresis was 17 days (IQR 16-18). Seventeen of 21 patients underwent ASCT procedure, one patient withdrew the consent for the procedure, and three patients failed to collect adequate graft. During ASCT, 13 of 17 patients developed febrile neutropenia and one patient developed neutropenic colitis requiring surgical intervention. The median time to ANC recovery was 11 days (IQR 10-11), and the median time to platelet count recovery was 12 days (IQR 12-14). There were no transplantation-related deaths, additional cardiac toxicities or secondary malignancies observed in this group of patients.

DISCUSSION

We found that R-DA-EPOCH followed by ASCT is an effective first-line treatment approach in DLBCL patients with unfavorable prognostic features. R-DA-EPOCH can surpass a negative prognostic impact of age on survival of patients. Our results also suggest that R-DA-EPOCH offers improved survival benefit in R-IPI defined "poor-risk" patients in comparison with previously reported 4-year OS rate of 55% in R-CHOP-treated patients (8).

DA-EPOCH was initially developed and used as the first-line treatment for DLBCL patients at the US National Cancer Institute, with the reported 5-year OS and PFS rates of 73% and 70%, respectively (20). In 2007, a Spanish group reported using R-DA-EPOCH for the treatment of poor prognosis DLBCL patients and achieving 2-year OS and event-free survival (EFS) rates of 75% and 68%, respectively, with $aIPI \geq 3$ as the only factor related to poor EFS (21). Recently, another group from Spain reported 10-year OS and EFS rates of 64% and 48%, respectively, in R-DA-EPOCH-treated patients with poor prognosis DLBCL (33). ASCT has been extensively discussed as part of first-line therapy for aggressive non-Hodgkin lymphomas, especially DLBCL (26,34-36), where consolidation using high-dose therapy and ASCT was shown to reduce relapse rate, mainly in a subgroup of high-risk patients (37-39). In 2008, Greb et al (25) reported a Cochrane database review including more than 3000 patients and concluded that initial CR rate superiority did not translate into OS, ie, OS and EFS were the same regardless of whether the patients were treated with conventional chemotherapy or high-dose therapy followed by ASCT. This lack of survival benefit was reason not to include or recommend ASCT as a standard part of first-line therapy. Additional data from the results of the

SWOG Intergroup phase III trial demonstrated that the addition of ASCT resulted in a significantly higher 2-year PFS but no difference in 2-year OS was observed. Subset analyses showed that the benefit of ASCT was found primarily in patients with high-IPI disease, in whom 2-year OS rate was 82% (ASCT) vs 64% (27). Our results regarding the 5-year OS and PFS in our DLBCL patients and those planned to receive ASCT are in line with previous experiences with R-DA-EPOCH regimen in similar cohorts of patients. As suggested by PFS survival curves, our patients achieving remission and not progressing over 2 years of follow-up are probably cured.

Our study sample included some patients with $IPI < 2$ but with a very high proliferation index (and otherwise unfavorable disease features), which is partly the reason why IPI and R-IPI showed no prognostic significance. Also, dynamic dose adjustment tailored to the hematopoietic reserve of individual patients allowed for the application of the highest acceptable doses and maximization of therapeutic effect. This approach inevitably results in an increased hematologic toxicity, but it enables optimal treatment of elderly patients and abrogates negative prognostic significance of age on survival (included into IPI and R-IPI scores). Increased hematologic toxicity, treatment discontinuation, and deaths during treatment do not offset high survival rates in our cohort of patients. Further benefit observed was the ability to use the last cycle of DA-EPOCH therapy for stem cell mobilization with 86% success rate, reducing the need for additional stem cell mobilizing regimen and associated risks.

Experience with combination of DA-EPOCH with ASCT as part of first-line therapy for poor-risk non-Hodgkin lymphomas is still lacking despite the promising results with double-hit lymphomas (40). Although we were unable to discriminate patients with double-hit lymphomas, our inclusion criteria based on very high proliferation rates and unfavorable prognostic features probably pooled such patients. Results of immunochemotherapy regimens in double-hit lymphomas are unsatisfactory. Petrich et al (40) reported median PFS and OS rates for the entire cohort of 10.9 and 21.9 months, respectively, and the PFS and OS rates at 2 years of 40% and 49%, respectively. In the first meta-analysis of patients with double-hit lymphomas, Howlett et al (23) found that median PFS for the R-CHOP, R-EPOCH, and other intensive regimens groups was 12.1, 22.2, and 18.9 months, respectively. First-line treatment with R-EPOCH significantly reduced the relative risk of a progression compared with R-CHOP by 34%; how-

ever, OS was not significantly different across treatment approaches. They also presumed that a subset of patients might benefit from intensive induction with or without transplant (23). These results showed that R-DA-EPOCH is the only regimen that provides PFS advantage, but without OS benefit. Most patients with double-hit lymphomas are within the group of DLBCL patients with high Ki-67%. Their treatment results are significantly worse than in other DLBCL patients and those in our cohort. Thus, we assume that patients with double-hit lymphomas comprised only a minority among our patients.

In search for better treatment options for high-risk DLBCL patients, many intensive regimens were evaluated with mostly dose densing or intensification and etoposide addition. Schmitz et al (15) reported the 3-year EFS of 69.5% and 61.4% in the R-CHOEP14- and R-MegaCHOEP-treated patients, respectively, without a statistical significance. Doubling and densing rituximab therapy in addition to CHOEP14 did not improve results (41). However, these were all young patients with high-risk disease. The results of R-CHOP treatment in older patients are not so favorable. In the International Society of Geriatric Oncology (SIOG) expert position commentary by Morrison et al (42), CR rates were 50% in patients aged 65–75 years, and 40% in those aged >75 years. Median remission duration was 16 months; cure rates were 50%–60% in younger and 25%–30% in older patients.

Our study had a few limitations, including retrospective design, single-center experience, and inability to discriminate double-hit lymphomas from other DLBCL subsets. High logistic requirements of R-DA-EPOCH regimen resulted in lower threshold for treatment discontinuation in some patients experiencing otherwise manageable complications. The effects of treatment discontinuation on outcome measures were taken into account by analyzing the treatment response in both the complete cohort and evaluable patients only, and by using strict inclusion and censoring criteria regarding the patients who progressed or died during treatment (we included all patients who had received ≥ 1 cycle of therapy). The strengths of our study are mimicking the intention-to-treat approach, respectable number of patients treated, and long follow-up.

In conclusion, our results in one of the largest cohorts of patients outside the US National Cancer Institute showed that R-DA-EPOCH is a very effective therapeutic option as the first-line treatment for DLBCL patients with unfavorable prognostic features irrespective of their age.

ASCT provides additional benefit for a selected group of patients with acceptable toxicity.

Funding None declared.

Ethical approval received from the Institutional Review Board of the University Hospital Dubrava.

Declaration of authorship VP conceptualized the manuscript, searched the literature, treated patients, interpreted data, and participated in writing of the manuscript. ŽP treated patients, searched literature, collected data, interpreted data, drafted and participated in the writing of the manuscript. ML treated patients, searched literature, collected data, performed statistical analysis, interpreted data, and participated in writing of the manuscript. ZM treated patients, searched literature, interpreted data, and participated in writing of the manuscript. MP treated patients, interpreted data, and participated in writing of the manuscript. OJ treated patients, searched literature, interpreted data, and participated in writing of the manuscript. RA treated patients, interpreted data, and participated in writing of the manuscript. RK treated patients, searched literature, interpreted data, and participated in writing of the manuscript.

Competing interests All authors have completed the Unified Competing Interest form at www.icmje.org/coi_disclosure.pdf (available on request from the corresponding author) and declare: no support from any organization for the submitted work; no financial relationships with any organizations that might have an interest in the submitted work in the previous 3 years; no other relationships or activities that could appear to have influenced the submitted work.

References

- Jaffe ES, Harris NL, Stein H, Isaacson PG. Classification of lymphoid neoplasms: the microscope as a tool for disease discovery. *Blood*. 2008;112:4384-99. [Medline:19029456](#) [doi:10.1182/blood-2008-07-077982](#)
- Alizadeh AA, Eisen MB, Davis RE, Ma C, Lossos IS, Rosenwald A, et al. Distinct types of diffuse large B-cell lymphoma identified by gene expression profiling. *Nature*. 2000;403:503-11. [Medline:10676951](#) [doi:10.1038/35000501](#)
- Wilson WH. Drug resistance in diffuse large B-cell lymphoma. *Semin Hematol*. 2006;43:230-9. [Medline:17027657](#) [doi:10.1053/j.seminhematol.2006.07.005](#)
- Miller TP, Grogan TM, Dahlberg S, Spier CM, Brazier RM, Banks PM, et al. Prognostic significance of the Ki-67-associated proliferative antigen in aggressive non-Hodgkin's lymphomas: a prospective Southwest Oncology Group trial. *Blood*. 1994;83:1460-6. [Medline:8123837](#)
- Wilson WH, Teruya-Feldstein J, Fest T, Harris C, Steinberg SM, Jaffe ES, et al. Relationship of p53, bcl-2, and tumor proliferation to clinical drug resistance in non-Hodgkin's lymphomas. *Blood*. 1997;89:601-9. [Medline:9002964](#)
- A predictive model for aggressive non-Hodgkin's lymphoma. The International Non-Hodgkin's Lymphoma Prognostic Factors Project. *N Engl J Med*. 1993;329:987-94. [Medline:8141877](#) [doi:10.1056/NEJM199309303291402](#)
- Ziepert M, Hasenclever D, Kuhnt E, Glass B, Schmitz N, Pfreundschuh M, et al. Standard International prognostic index remains a valid predictor of outcome for patients with aggressive CD20+ B-cell lymphoma in the rituximab era. *J Clin Oncol*.

- 2010;28:2373-80. [Medline:20385988](#) [doi:10.1200/JCO.2009.26.2493](#)
- 8 Sehn LH, Berry B, Chhanabhai M, Fitzgerald C, Gill K, Hoskins P, et al. The revised International Prognostic Index (R-IPI) is a better predictor of outcome than the standard IPI for patients with diffuse large B-cell lymphoma treated with R-CHOP. *Blood*. 2007;109:1857-61. [Medline:17105812](#) [doi:10.1182/blood-2006-08-038257](#)
 - 9 Sweetenham JW. Diffuse large B-cell lymphoma: risk stratification and management of relapsed disease. *Hematology Am Soc Hematol Educ Program*. 2005;252-9. [Medline:16304389](#)
 - 10 Hamlin PA, Zelenetz AD, Kewalramani T, Qin J, Satagopan JM, Verbel D, et al. Age-adjusted International Prognostic Index predicts autologous stem cell transplantation outcome for patients with relapsed or primary refractory diffuse large B-cell lymphoma. *Blood*. 2003;102:1989-96. [Medline:12676776](#) [doi:10.1182/blood-2002-12-3837](#)
 - 11 Karlin L, Coiffier B. Improving survival and preventing recurrence of diffuse large B-cell lymphoma in younger patients: current strategies and future directions. *Onco Targets Ther*. 2013;6:289-96. [Medline:23579927](#)
 - 12 Glass B, Kloess M, Bentz M, Schlimok G, Berdel WE, Feller A, et al. Dose-escalated CHOP plus etoposide (MegaCHOEP) followed by repeated stem cell transplantation for primary treatment of aggressive high-risk non-Hodgkin lymphoma. *Blood*. 2006;107:3058-64. [Medline:16384932](#) [doi:10.1182/blood-2005-04-1570](#)
 - 13 Delarue R, Tilly H, Mounier N, Petrella T, Salles G, Thieblemont C, et al. Dose-dense rituximab-CHOP compared with standard rituximab-CHOP in elderly patients with diffuse large B-cell lymphoma (the LNH03-6B study): a randomised phase 3 trial. *Lancet Oncol*. 2013;14:525-33. [Medline:23578722](#) [doi:10.1016/S1470-2045\(13\)70122-0](#)
 - 14 Lorusso V, Palmieri G, Bianco AR, Abate G, Catalano G, De Vita F, et al. CEOP-B/VIMB vs. promace-CytaBOM in the treatment of intermediate or high grade non-Hodgkin's lymphoma: a randomised multicenter study of Southern Italy Cooperative Group. *Int J Oncol*. 2000;16:149-54. [Medline:10601560](#)
 - 15 Schmitz N, Nickelsen M, Ziepert M, Haenel M, Borchmann P, Schmidt C, et al. Conventional chemotherapy (CHOEP-14) with rituximab or high-dose chemotherapy (MegaCHOEP) with rituximab for young, high-risk patients with aggressive B-cell lymphoma: an open-label, randomised, phase 3 trial (DSHNHL 2002-1). *Lancet Oncol*. 2012;13:1250-9. [Medline:23168367](#) [doi:10.1016/S1470-2045\(12\)70481-3](#)
 - 16 Ketterer N, Coiffier B, Thieblemont C, Fermé C, Bričre J, Casasnovas O, et al. Phase III study of ACVBP versus ACVBP plus rituximab for patients with localized low-risk diffuse large B-cell lymphoma (LNH03-1B). *Ann Oncol*. 2013;24:1032-7. [Medline:23235801](#) [doi:10.1093/annonc/mds600](#)
 - 17 Gang AO, Strim C, Pedersen M, D'Amore F, Pedersen LM, Bukh A, et al. R-CHOEP-14 improves overall survival in young high-risk patients with diffuse large B-cell lymphoma compared with R-CHOP-14. A population-based investigation from the Danish Lymphoma Group. *Ann Oncol*. 2012;23:147-53. [Medline:21460380](#) [doi:10.1093/annonc/mdr058](#)
 - 18 Lai GM, Chen YN, Mickley LA, Fojo AT, Bates SE. P-glycoprotein expression and schedule dependence of adriamycin cytotoxicity in human colon carcinoma cell lines. *Int J Cancer*. 1991;49:696-703. [Medline:1682280](#) [doi:10.1002/ijc.2910490512](#)
 - 19 Wilson WH, Bryant G, Bates S, Fojo A, Wittes RE, Steinberg SM, et al. EPOCH chemotherapy: toxicity and efficacy in relapsed and refractory non-Hodgkin's lymphoma. *J Clin Oncol*. 1993;11:1573-82. [Medline:7687667](#) [doi:10.1200/JCO.1993.11.8.1573](#)
 - 20 Wilson WH, Grossbard ML, Pittaluga S, Cole D, Pearson D, Drbohlav N, et al. Dose-adjusted EPOCH chemotherapy for untreated large B-cell lymphomas: a pharmacodynamic approach with high efficacy. *Blood*. 2002;99:2685-93. [Medline:11929754](#) [doi:10.1182/blood.V99.8.2685](#)
 - 21 García-Suárez J, Bañas H, Arribas I, De Miguel D, Pascual T, Burgaleta C. Dose-adjusted EPOCH plus rituximab is an effective regimen in patients with poor-prognostic untreated diffuse large B-cell lymphoma: results from a prospective observational study. *Br J Haematol*. 2007;136:276-85. [Medline:17233819](#) [doi:10.1111/j.1365-2141.2006.06438.x](#)
 - 22 Wilson WH, Jung S-H, Porcu P, Hurd D, Johnson J, Martin SE, et al. A Cancer and Leukemia Group B multi-center study of DA-EPOCH-rituximab in untreated diffuse large B-cell lymphoma with analysis of outcome by molecular subtype. *Haematologica*. 2012;97:758-65. [Medline:22133772](#) [doi:10.3324/haematol.2011.056531](#)
 - 23 Howlett C, Snedecor SJ, Landsburg DJ, Svoboda J, Chong EA, Schuster SJ, et al. Front-line, dose-escalated immunochemotherapy is associated with a significant progression-free survival advantage in patients with double-hit lymphomas: a systematic review and meta-analysis. *Br J Haematol*. 2015;170:504-14. [Medline:25907897](#) [doi:10.1111/bjh.13463](#)
 - 24 Dunleavy K. Aggressive B cell lymphoma: optimal therapy for MYC-positive, double-hit, and triple-hit DLBCL. *Curr Treat Options Oncol*. 2015;16:58. [Medline:26634708](#) [doi:10.1007/s11864-015-0374-0](#)
 - 25 Greb A, Bohlius J, Schiefer D, Schwarzer G, Schulz H, Engert A. High-dose chemotherapy with autologous stem cell transplantation in the first line treatment of aggressive non-Hodgkin lymphoma (NHL) in adults. *Cochrane Database Syst Rev*. 2008;CD004024. [Medline:18254036](#)
 - 26 Glass B, Ziepert M, Reiser M, Freund M, Trümper L, Metzner B, et al. High-dose therapy followed by autologous stem-cell transplantation with and without rituximab for primary treatment of high-risk diffuse large B-cell lymphoma. *Ann Oncol*. 2010;21:2255-61. [Medline:20444844](#) [doi:10.1093/annonc/mdq235](#)
 - 27 Stiff PJ, Unger JM, Cook JR, Constine LS, Couban S, Stewart DA, et al. Autologous transplantation as consolidation for aggressive

- non-Hodgkin's lymphoma. *N Engl J Med.* 2013;369:1681-90. [Medline:24171516](#) [doi:10.1056/NEJMoa1301077](#)
- 28 Kaplan E, Meier P. Nonparametric estimation from incomplete observations. *J Am Stat Assoc.* 1958;53:457-81. [doi:10.1080/01621459.1958.10501452](#)
- 29 Mantel N. Evaluation of survival data and two new rank order statistics arising in its consideration. *Cancer Chemother Rep.* 1966;50:163-70. [Medline:5910392](#)
- 30 Schemper M, Smith TL. A note on quantifying follow-up in studies of failure time. *Control Clin Trials.* 1996;17:343-6. [Medline:8889347](#) [doi:10.1016/0197-2456\(96\)00075-X](#)
- 31 Lucijanić M. Survival analysis in clinical practice: analyze your own data using an Excel workbook. *Croat Med J.* 2016;57:77-9. [Medline:26935618](#) [doi:10.3325/cmj.2016.57.77](#)
- 32 National Cancer Institute. Common Terminology Criteria for Adverse Events v4.0. NCI, NIH, DHHS. May 29, 2009. NIH publication # 09-7473.
- 33 Purroy N, Bergua J, Gallur L, Prieto J, Lopez LA, Sancho JM, et al. Long-term follow-up of dose-adjusted EPOCH plus rituximab (DA-EPOCH-R) in untreated patients with poor prognosis large B-cell lymphoma. A phase II study conducted by the Spanish PETHEMA Group. *Br J Haematol.* 2015;169:188-98. [Medline:25521006](#) [doi:10.1111/bjh.13273](#)
- 34 Gunnellini M, Emili R, Coaccioli S, Liberati AM. The role of autologous stem cell transplantation in the treatment of diffuse large B-cell lymphoma. *Adv Hematol.* 2012;2012:195484. [Medline:22312366](#) [doi:10.1155/2012/195484](#)
- 35 Josting A, Reiser M, Rueffer U, Salzberger B, Diehl V, Engert A. Treatment of primary progressive Hodgkin's and aggressive non-Hodgkin's lymphoma: is there a chance for cure? *J Clin Oncol.* 2000;18:332-9. [Medline:10637247](#)
- 36 Coiffier B. State-of-the-art therapeutics: diffuse large B-cell lymphoma. *J Clin Oncol.* 2005;23:6387-93. [Medline:16155024](#) [doi:10.1200/JCO.2005.05.015](#)
- 37 Vose JM, Zhang MJ, Rowlings PA, Lazarus HM, Bolwell BJ, Freytes CO, et al. Autologous transplantation for diffuse aggressive non-Hodgkin's lymphoma in patients never achieving remission: a report from the Autologous Blood and Marrow Transplant Registry. *J Clin Oncol.* 2001;19:406-13. [Medline:11208832](#)
- 38 Nastoupil LJ, Rose AC, Flowers CR. Diffuse large B-cell lymphoma: current treatment approaches. *Oncology (Williston Park).* 2012;26:488-95. [Medline:22730604](#)
- 39 Iams W, Reddy NM. Consolidative autologous hematopoietic stem-cell transplantation in first remission for non-Hodgkin lymphoma: current indications and future perspective. *Ther Adv Hematol.* 2014;5:153-67. [Medline:25324956](#) [doi:10.1177/2040620714547327](#)
- 40 Petrich AM, Gandhi M, Jovanovic B, Castillo JJ, Rajguru S, Yang DT, et al. Impact of induction regimen and stem cell transplantation on outcomes in double-hit lymphoma: a multicenter retrospective analysis. *Blood.* 2014;124:2354-61. [Medline:25161267](#) [doi:10.1182/blood-2014-05-578963](#)
- 41 Schmitz N, Nickelsen M, Ziepert M, Haenel M, Viardot A, Dreyling MH, et al. Optimization of rituximab for treatment of DLBCL in young, high-risk patients—results of the Dense-R-CHOEP Trial of the German High-Grade Lymphoma Study Group. *Blood.* 2015;126:474.
- 42 Morrison VA, Hamlin P, Soubeyran P, Stauder R, Wadhwa P, Aapro M, et al. Approach to therapy of diffuse large B-cell lymphoma in the elderly: the International Society of Geriatric Oncology (SIOG) expert position commentary. *Ann Oncol.* 2015;26:1058-68. [Medline:25635006](#) [doi:10.1093/annonc/mdv018](#)