

Higher serum uric acid on admission is associated with higher short-term mortality and poorer long-term survival after myocardial infarction: retrospective prognostic study

Car, Siniša; Trkulja, Vladimir

Source / Izvornik: **Croatian medical journal, 2009, 50, 559 - 66**

Journal article, Published version

Rad u časopisu, Objavljena verzija rada (izdavačev PDF)

<https://doi.org/10.3325/cmj.2009.50.559>

Permanent link / Trajna poveznica: <https://urn.nsk.hr/urn:nbn:hr:105:212549>

Rights / Prava: [In copyright](#) / [Zaštićeno autorskim pravom.](#)

Download date / Datum preuzimanja: **2024-07-21**



Repository / Repozitorij:

[Dr Med - University of Zagreb School of Medicine
Digital Repository](#)



doi: 10.3325/cmj.2009.50.559

Higher Serum Uric Acid on Admission Is Associated with Higher Short-term Mortality and Poorer Long-term Survival After Myocardial Infarction: Retrospective Prognostic Study

Siniša Car¹, Vladimir Trkulja²

¹Department of Internal Medicine, Varaždin County General Hospital, Varaždin, Croatia

²Department of Pharmacology, Zagreb University School of Medicine, Zagreb, Croatia

Aim To assess serum uric acid (SUA) levels determined on admission as a potential predictor of short-term mortality and long-term survival in acute myocardial infarction (AMI) patients.

Method Data for this retrospective prognostic study were drawn from the patient database of the Varaždin County General Hospital in Varaždin, Croatia. We included consecutive patients with verified AMI admitted within 48 hours since the symptom onset during the period between 1 January 1996 and 31 December 2001. Long-term survival/mortality data were collected through direct contacts with patients and search of the community death registries. Relative risks (RR) and hazard ratios (HR) by 10 $\mu\text{mol/L}$ increase in SUA were determined using modified Poisson regression with robust error variance and proportional hazard regression, respectively.

Results A total of 621 patients (age 27-90 years, 64.7% men, 77.5% AMI with ST elevation, SUA 63-993 $\mu\text{mol/L}$) were included. Higher SUA on admission was independently associated with higher in-hospital mortality (RR, 1.016; 95% confidence interval [CI], 1.001-1.031, $P=0.043$) and higher thirty-day mortality (RR, 1.016; 95% CI, 1.003-1.029, $P=0.018$). Considered covariates were demographics, pre-index event cardiovascular morbidity and treatment, on-admission serum creatinine, total cholesterol and triglycerides, AMI characteristics, and peak creatine phosphokinase. Higher SUA on admission was also independently associated with poorer long-term survival (ie, higher all-cause mortality) (HR, 1.105; 95% CI, 1.020-1.195, $P=0.010$). Considered covariates were demographics, laboratory variables on admission, AMI characteristics, peak creatine phosphokinase, acute complications, and treatment at discharge.

Conclusion Higher serum uric acid determined on admission is associated with higher in-hospital mortality and thirty-day mortality and poorer long-term survival after AMI.

Received: October 16, 2009

Accepted: December 1, 2009

Correspondence to:

Siniša Car
Department of internal medicine
Varaždin County General Hospital
Ivana Meštrovića bb
42000 Varaždin, Croatia
sinisa.car@vz.t-com.hr

In humans, uric acid (UA) is the end product of purine catabolism (1). Its serum levels (SUA), governed by the production (liver) and elimination (mainly the kidney) rates, are influenced by genetically determined factors (eg, activity of synthesizing enzymes or renal transporter systems), racial and demographic characteristics (eg, sex, gonadal function in women, obesity), diet (eg, purine-rich foods, fructose, alcohol), habits (eg, SUA is lower in smokers and increases after quitting), morbidity (eg, heart or renal failure, malignancies), and medications (eg, diuretics, cytotoxic agents) (1-4). The role of SUA in cardiovascular and renal diseases has been intensively investigated, although not without controversy (5). On the molecular and cellular level, UA exerts a number of effects of potential interest: it is one of the most important antioxidants in plasma, but at high concentrations it may promote oxidative stress; it may induce endothelial dysfunction and vascular smooth muscle cell proliferation in vitro, platelet aggregation, and microinflammation; increased UA causes tubulointerstitial inflammation, morphological and functional changes in the glomeruli and renal arteriole and increased salt sensitivity (3,5). There is now sufficient evidence to consider increased SUA as an etiological factor in "hyperuricemic hypertension" or "salt-sensitive kidney-dependent hypertension" (3,5). Clinical and epidemiological studies have linked increased SUA to occurrence and outcomes of diabetes mellitus, metabolic syndrome, and chronic renal failure (3,5,6). It has also been suggested as a risk factor for occurrence and a predictor of poorer outcomes in acute stroke (7-9) and a risk factor for occurrence/outcomes in various aspects of cardiovascular morbidity (3,5,6). However, there are also views that SUA is not relevant in the pathophysiology of cardiovascular diseases and that it should be viewed as a secondary side-marker of etiologically relevant processes (3,5).

Acute myocardial infarction (AMI) is the most dramatic manifestation of the coronary artery disease (CAD) (10). High SUA has been indicated as a risk factor for CAD (10) and as an independent prognostic factor of poorer outcomes (occurrence of AMI, fatal AMI, sudden death, all-cause mortality) in patients with verified CAD (11,12). Less is known about SUA as a potential prognostic/risk factor for outcomes in patients affected specifically by AMI. A recent retrospective analysis from Japan (13) observed a univariate association between higher SUA on admission (within 48 hours since the symptom onset) and higher thirty-day mortality (fourth vs first quartile SUA values) in AMI patients. It also reported an independent association between higher SUA and poorer long-term survival (13). Having in mind

potential ethnic/racial specificities and cultural differences (eg, diet, alcohol consumption), we aimed to investigate SUA levels determined on admission as a potential predictor of short-term mortality (while accounting for relevant covariates) and long-term survival in a sample of patients of European descent (Caucasians) with verified AMI.

PATIENTS AND METHODS

This retrospective prognostic analysis used data from the patient database of the Varaždin County General Hospital in Varaždin, Croatia and was approved by the institution's Ethics Committee.

Patients

Candidates for inclusion were acute coronary syndrome patients admitted to Varaždin County General Hospital between 1 January 1996 and 31 December 2001 meeting the following criteria: a) to be Caucasians of European descent; b) to have verified AMI (clinical symptoms, typical electrocardiographic [ECG] findings on a standard 12-lead ECG [new ST-T changes, new left bundle branch block or development of pathological Q waves], elevated cardiac biochemical markers [creatin phosphokinase, CPK-MB fraction] with or without typical echocardiographic findings [typical new regional wall motion abnormality]); c) to have been admitted and laboratory evaluated within 48 hours from the symptom onset. During the analyzed period (1996-2001), troponin levels were not used as a diagnostic aid. All source data were (re)evaluated by the same investigator (S.C.). Patients who were dead on admission were not included. Of the 943 patients alive on admission, 265 were excluded since AMI could not be verified, 48 due to late referral, and 9 due to the late laboratory evaluation. This left 621 patients for the analysis.

Standardized in-house procedure for AMI

All patients with acute coronary syndromes were handled according to a standardized algorithm. On-admission, laboratory evaluation always included serum uric acid ($\mu\text{mol/L}$), serum creatinine (Cr, $\mu\text{mol/L}$), CPK levels (U/L), total cholesterol (mmol/L), and triglycerides (mmol/L). They were admitted to the Intensive Care unit (ICU) and were all given antiplatelet treatment, except where contraindicated. In cases of verified AMI with ST elevation, and when indicated, fibrinolytic treatment with streptokinase was commenced. During the observed period (1996-2001), primary percutaneous interventions were not employed at the in-

stitution – the method was introduced in 2005 as a part of the National Program for Primary Percutaneous Interventions. During the ICU stay, all patients were continuously ECG-monitored, whereas oxygenation and other interventions were performed as needed. Stabilized patients were transferred to the Department of Cardiology until discharge.

Clinical and laboratory measurements

Standard 12-lead ECG recordings were made using various models of Siemens (Erlangen, Germany) ECG apparatuses. Integrated biochemical analyzers of the Abbott-Architect series (Abbott Park, IL, USA) were used for laboratory measurements of serum uric acid, creatine phosphokinase activity, serum creatinine, total cholesterol, and triglycerides.

Outcomes

We defined two primary outcomes related to short-term mortality (in-hospital and thirty-day) and one secondary outcome related to long-term survival (long-term all-cause mortality). In-hospital mortality was defined as a proportion of patients who died during the hospital stay initiated due to the onset of AMI. Thirty-day mortality was defined as a proportion of patients who died within 30 days since the symptom onset, either during the initial hospital stay or after discharge. In the case of out-of-the hospital deaths, death dates were verified from death certificates. Since mortality rate during the first 30 days after the index event in AMI patients is by far higher than during any other subsequent 30-day period, only patients surviving the first 30 days were considered for the analysis of long-term survival/all-cause mortality, and day 30 post index event was considered as “time 0” for determination of “time-to-event.” All patients were contacted by phone or in writing. When it was confirmed that they were alive, this date was used to calculate “censored time.” If no confirmation was received, community death registers were searched to verify the date of death and calculate the “failure time.” For patients who did not respond to our attempts to contact them and for whom death date could not be determined through a search of the community death register, the last documented date of a control visit was used to determine “censored time.”

Statistical analysis

Due to data skewness, all continuous variables are summarized as medians (ranges). In-hospital and thirty-day mor-

tality were analyzed using modified Poisson regression with robust error variance to obtain adjusted incidence ratios, ie, relative risk (RR) rather than odds ratio since data were collected prospectively and event rates were relatively high ($\geq 10\%$) (14). “Time-to-event” data were analyzed by fitting proportional hazard regression models with the exact method for ties. On-admission SUA levels as a dependent variable were analyzed using multiple linear regression. Residuals were normally distributed. We used SAS for Windows software, version 9.1.3. (SAS Inc., Cary, NC, USA) licensed to Zagreb University School of Medicine.

RESULTS

Patients’ characteristics

Patient characteristics are summarized in Table 1. Cardiovascular treatments utilized before the index event included angiotensin converting enzyme inhibitors (25.3%), calcium channel blockers (21.7%), nitrates (21.6%), diuretics (14.7%), antiplatelets (13.9%), digitalis (8.5%), beta blockers (5.8%), and statins (2.7%). Patients were admitted between

TABLE 1. Patient characteristics and short-term mortality (n=621)

Characteristic	Data†
Men	402 (64.7)
Time: symptom onset to admission (hours)	6 (0.5-48)
STEMI/NSTEMI	481 (77.5)/140
Right bundle branch block	22 (3.5)
Left bundle branch block	20 (3.2)
Age (years)	65 (27-91)
Current smokers	208 (33.5)
Prior acute myocardial infarction	94 (15.1)
Prior cerebrovascular insult	57 (9.2)
Prior angina	126 (20.3)
Prior by-pass, stent or PTCA	9 (1.4)
Prior hypertension	459 (73.9)
Prior symptomatic heart failure	61 (9.8)
Diabetes mellitus	129 (20.8)
Serum uric acid on admission ($\mu\text{mol/L}$)	315 (63-993)
Serum creatinine on admission ($\mu\text{mol/L}$)	105 (43-804)
Serum triglyceride on admission (mmol/L)	1.24 (0.22–16.9)
Serum total cholesterol on admission (mmol/L)	5.34 (1.6–11.3)
Peak creatine phosphokinase (U/L)	771 (0-9350)
Fibrinolytics after index event	48 (7.7)
In-hospital mortality	62 (9.98)
Thirty-day mortality	77 (12.4)

*Abbreviations: STEMI – myocardial infarction with ST elevation; NSTEMI – myocardial infarction without ST elevation; PTCA – percutaneous transluminal coronary angioplasty.

†Data are counts (%) or medians (ranges).

0.5 and 48 hours after the symptom onset and SUA values on admission varied between 63 and 993 $\mu\text{mol/L}$. In a multivariate analysis (Table 2), higher SUA levels were associated with higher serum creatinine, male sex, history of heart failure, and history of cerebrovascular insult. Smokers had lower SUA than non-smokers (Table 2).

SUA and short-term mortality

In-hospital mortality was 9.98% and thirty-day mortality was 12.4% (Table 1). There was a clear-cut univariate association between higher SUA levels and higher in-hospital and thirty-day mortality (Figure 1). For multivariate analysis, a regression model was first built for each outcome using a stepwise procedure and then variables associated

with higher SUA (depicted in Table 2) and AMI type were forced into the models, if not already included. With all the adjustments, higher SUA levels were independently as-

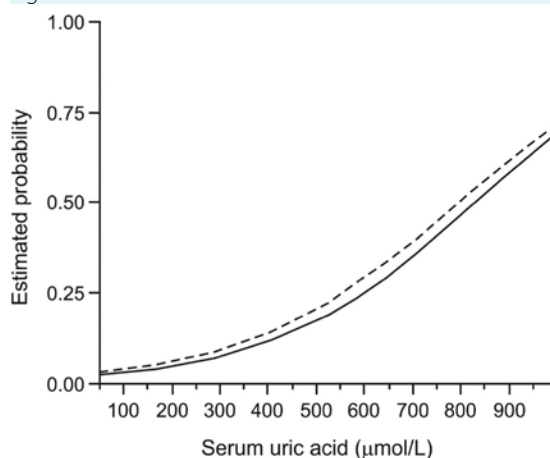
TABLE 2. Multivariate analysis of serum uric acid on admission (n=621)*

Variables	Estimate (95% CI) [†]	P
Serum creatinine	0.77 (0.61-0.94)	<0.001
Male sex	28.4 (8.59-48.2)	0.005
Prior symptomatic heart failure	73.1 (42.4-104)	<0.001
Prior cerebrovascular insult	41.0 (9.77-72.3)	0.010
Current smoker	-26.9 (-47.3 to -6.54)	0.009

*Linear regression analysis, using stepwise selection procedure with $P < 0.05$ to enter and $P < 0.10$ to stay in the model was employed. Potential independents: demographic and pre-index event medical history data and laboratory variables determined on admission.

[†]Estimates are given with 95% confidence intervals (CI).

Figure 1.



Univariate association between serum uric acid levels on admission and in-hospital and thirty-day mortality in acute myocardial infarction patients (N=621). Estimated probabilities are from logit models with serum uric acid as a single continuous independent. Relative risk (RR) per 10 units change in uric acid levels with 95% confidence intervals (CI) is from modified Poisson regression with robust error variance with serum uric acid as a single independent. Solid line – in-hospital mortality (RR, 1.038; 95% CI, 1.026-1.051); dashed line – thirty-day mortality (RR, 1.035; 95% CI, 1.024-1.047).

TABLE 3. Multivariate analysis of in-hospital and thirty-day mortality in acute myocardial infarction patients (n=621)*

Independent variables	Relative risk (95% confidence interval) [†]			
	in-hospital mortality	P	thirty-day mortality	P
Serum UA (10 units)	1.016 (1.001-1.031)	0.043	1.016 (1.003-1.029)	0.018
Male sex	0.568 (0.346-0.933)	0.026	0.646 (0.427-0.978)	0.038
Age	1.040 (1.020-1.061)	<0.001	1.043 (1.025-1.061)	<0.001
Prior CVI	2.016 (1.173-3.465)	0.011	2.309 (1.515-3.520)	<0.001
Prior hypertension	0.564 (0.324-0.981)	0.043	0.622 (0.389-0.994)	0.047
Peak CPK (10 units)	1.001 (1.000-1.003)	0.096	1.001 (1.000-1.002)	0.068
RBBB	3.029 (1.322-6.941)	0.009	–	–
Prior AMI	2.200 (1.256-3.852)	0.006	–	–
Serum Cr (10 units) [‡]	1.025 (1.001-1.049)	0.045	1.019 (0.995-1.044)	0.118
Prior heart failure [§]	1.305 (0.687-2.479)	0.416	1.523 (0.911-2.544)	0.108
STEMI [§]	1.433 (0.765-2.685)	0.262	1.267 (0.781-2.155)	0.316

*Abbreviations: UA – uric acid; CVI – cerebrovascular insult; CPK – creatine phosphokinase; RBBB – right bundle branch block; AMI – acute myocardial infarction; Cr – creatinine; STEMI – myocardial infarction with ST elevation.

[†]Statistics: modified Poisson regression with robust error variance. A model was first built for each outcome using a stepwise selection procedure ($P < 0.05$ to enter, $P < 0.10$ to stay in the model) and then variables associated with higher serum uric acid on admission (depicted in Table 2) and infarction type were forced into the model, if not already included. Potential independents (depicted in Table 1): demographics, pre-index event medical history and treatment, laboratory variables determined on admission, myocardial infarction characteristics.

[‡]Forced into the model explaining variability of thirty-day mortality.

[§]Forced into both models.

sociated with both higher in-hospital mortality (RR by 10 units, 1.016; 95% CI, 1.001-1.031, $P=0.043$) and higher thirty-day mortality (RR by 10 units, 1.016; 95% CI, 1.003-1.029, $P=0.018$) (Table 3).

SUA and long-term survival (all-cause mortality)

Characteristics of patients who survived the first 30 days after AMI and were evaluated for long-term survival ($n=544$) are summarized in Table 4. The shortest observed censored time was 207 days (after day 30 post-index event) and the longest one was 13 years. A total of 175 (32.2%) deaths were observed, the first one 3 days after day 30 post-index

TABLE 4. Patients surviving the first 30 d after acute myocardial infarction and considered for long-term survival analysis ($n=544$)*

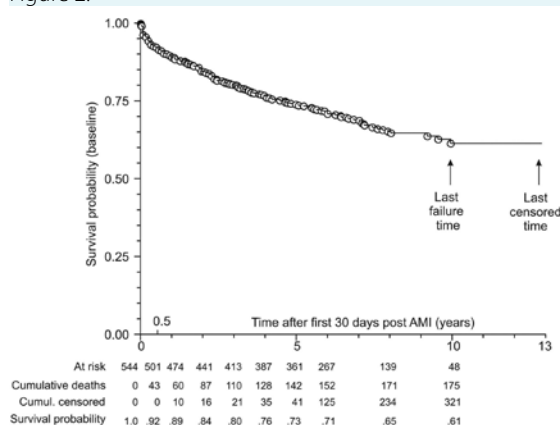
Characteristic	Data [†]
Men	367 (67.5)
STEMI/NSTEMI	418 (76.8)/126
Age (years)	63 (27-90)
Serum uric acid on admission ($\mu\text{mol/L}$)	312 (63-827)
Serum creatinine on admission ($\mu\text{mol/L}$)	104 (43-804)
Serum triglyceride on admission (mmol/L)	1.26 (0.22-16.9)
Serum total cholesterol on admission (mmol/L)	5.44 (1.67-11.3)
Diabetes mellitus	109 (20.0)
Hypertension	412 (75.7)
History of cerebrovascular insult	40 (7.35)
In-hospital MACE:	
symptomatic heart failure	149 (27.4)
ventricular tachycardia/fibrillation	147 (27.0)
atrial fibrillation/undulation	52 (9.6)
re-infarction or angina	33 (6.1)
atrio-ventricular block	26 (4.8)
Treatment at discharge:	
antiplatelets	445 (81.8)
nitrates	440 (80.9)
ACE inhibitors	342 (62.9)
diuretics	234 (43.0)
beta blockers	141 (25.9)
statins	84 (15.4)
calcium channel blockers	69 (12.7)
digitalis	39 (7.2)
Observed period after day 30 post index event (days)	
censored observations	2525 (207-4715)
deaths	730 (3-3615)
all-cause mortality during the observed period	175 (32.2)

*Abbreviations: STEMI/NTSEMI – myocardial infarction with/ without ST elevation; MACE – major adverse cardiac events; ACE – angiotensin converting enzyme.

[†]Data are presented as counts (%) or medians (ranges).

event and the last one 10 years later. There was a clear-cut univariate association between higher SUA on admission and poorer long-term survival (higher all-cause mortality) (Figure 2). Multivariate analysis indicated a significant independent association of higher SUA and poorer survival (HR by 10 units, 1.105; 95% CI, 1.020-1.195, $P=0.010$), which was conditional on age (significant SUA/age interaction) (Table 5). This is also illustrated by separate multivariate

Figure 2.



Univariate association between serum uric acid (SUA) levels on admission and long-term survival (after 30 days post index event) in acute myocardial infarction (AMI) patients ($N=544$). Survival probability was estimated in a proportional hazard regression model with SUA on admission as an independent variable. Hazard ratio (by 10 units) of SUA, 1.027; 95% confidence interval, 1.015-1.039.

TABLE 5. Multivariate analysis of time to death (all-cause) in 544 acute myocardial infarction patients who survived the first 30 d after the index event*

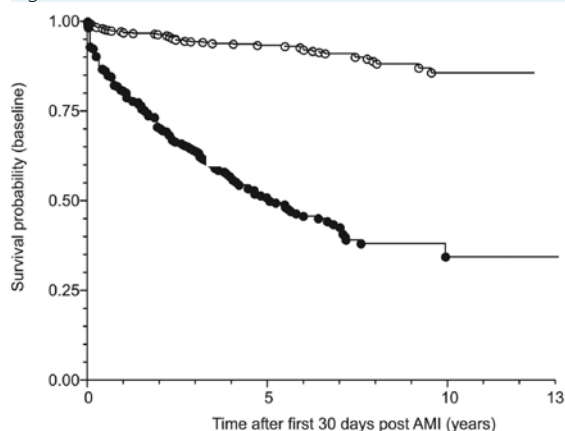
Independent variables	Hazard ratio (95% confidence interval)	P
Serum uric acid on admission (10 units)	1.105 (1.020, 1.195)	0.010
Serum creatinine on admission (10 units)	1.041 (1.010, 1.061)	0.003
Symptomatic heart failure at discharge	1.767 (1.260, 2.478)	0.001
Age	1.099 (1.054, 1.145)	<0.001
Use of digitalis after discharge	1.704 (1.081, 2.685)	0.022
Serum uric acid/age [†]	0.999 (0.998, 1.000)	0.017

*Proportional hazard regression with exact method for ties.

Stepwise procedure with $P < 0.05$ to enter and $P < 0.10$ to stay in the model was employed. Potential independents (Table 4): demographic data, laboratory variables determined on admission, myocardial infarction characteristics and acute complications, treatment at discharge.

[†]Interaction term.

Figure 3.



Multivariate analysis of time to death (all-cause) in acute myocardial infarction (AMI) patients who survived the first 30 days after the index event and were either younger (age 27-63 years) or older (>63 years) than the median age. A separate proportional hazard regression model was built for each subgroup. Serum uric acid (SUA) levels were included in both models, whereas other effects were selected using a stepwise procedure ($P < 0.05$ to enter, $P < 0.10$ to stay in the model). Potential independents were the same as in analysis shown in Table 5. Open circles – age 27-63 years, $n = 274$, 46 deaths. Adjusted HR for SUA (10 units), 1.030; confidence interval, 1.009-1.051, $P = 0.021$ (symptomatic heart failure at discharge, post-AMI ventricular tachycardia or fibrillation, and use of digitalis after discharge). Closed circles – age >63 years, $n = 270$, 129 deaths. Adjusted HR for SUA (10 units); confidence interval, 0.991-1.017, $P = 0.575$ (serum creatinine on admission, symptomatic heart failure at discharge, use of beta blockers, and use of nitrates after discharge).

analyses in patients younger than the median age (age 27-63 years, $n = 274$) and patients older than the median age (>63-90 years, $n = 270$) (Figure 3): higher SUA was independently associated with poorer survival in the former (HR by 10 units, 1.030; 95% CI, 1.009-1.051, $P = 0.021$) but not in the latter (HR by 10 units, 1.004; 95% CI, 0.991-1.017, $P = 0.575$).

DISCUSSION

Our study demonstrated that higher serum uric acid determined on admission is associated with higher in-hospital mortality and thirty-day mortality and poorer long-term survival after AMI.

The (wide) range of SUA levels determined on admission in the current cohort was practically identical to that observed in Japanese AMI patients (13) (all within 48 hours since the symptom onset) and the observed cross-sectional associations were expected considering pre-

vious knowledge (1,3,4,13). Currently, SUA is generally not considered a relevant factor in the assessment of risk/prediction of outcomes in AMI patients (3,15). The main finding of the present study in a sample of Caucasians of European descent is that higher SUA determined on admission (within 48 hours since the symptom onset) predicts higher in-hospital and thirty-day mortality after AMI. The results are in line with those in Japanese patients (13) and add to the observation that the relationship is independent, ie, not confounded by other factors influencing mortality and/or actual SUA levels. This is particularly interesting regarding serum creatinine because a) higher serum creatinine on admission is a well-accepted predictor of mortality after AMI (15) and b) just like others (13), we found an independent cross-sectional association between higher serum creatinine and higher SUA. The latter observation appears logical since both UA and creatinine are eliminated by the kidney. The present results suggest that in AMI patients, like in non-AMI CAD patients (11), the “risk” associated with SUA is separated from the “risk” attributable to serum creatinine, indicating renal function. Moreover, considering the adjusted RRs of in-hospital and thirty-day mortality (Table 3), risk increase associated with 10-unit ($\mu\text{mol/L}$) increase in SUA is not much different from that associated with 10-unit ($\mu\text{mol/L}$) increase in serum creatinine. Consequently, it appears reasonable to suggest that risk stratification systems for AMI patients, like GRACE (15), could benefit from inclusion of SUA in addition to serum creatinine (and other elements), particularly as it is a cheap marker that is readily, quickly, and reliably obtainable. By saying that, we do not neglect the fact that the present study, just as the Japanese one (13), suffers from limitations inherent to its retrospective nature, primarily susceptibility to bias (selection, treatment, assessment). However, we believe that the characteristics of the analyzed setting (AMI is an acute serious condition that is “handled” in standardized ways in ICUs where patients are continuously and closely followed-up and data are collected prospectively) and clear and simple inclusion and evaluation criteria that we used minimized potential biases. Therefore, we consider that the present estimates have achieved a reasonable level of internal validity. However, their generalizability is limited by the fact that they refer to AMI patients treated exclusively conservatively in the late 1990s and that, therefore, the established relationships might not be fully applicable to up-to-date settings with treatment strategies combining novel pharmacological and invasive procedures. Other effects on short-term mortality are difficult to interpret since they were not the primary objective of the study: the goal was not to find the best set of explanatory variables or

to evaluate all possible effects, but to test the hypotheses about SUA. Consequently, covariate selection was guided by previous knowledge and by statistical significance within the current sample. Non-inclusion or “insignificance” of a particular variable in the present models does not mean that it might not, in general, have an impact on outcomes after AMI, particularly if the effect is small or associated with a relatively infrequent patient/disease-related characteristic. Bundle branch blocks (BBB) are illustrative in this respect. In the present sample, only 22 (3.5%) patients had right BBB (RBBB) (either at presentation or during the hospital stay) and 20 (3.2%) had left BBB (LBBB). The former was independently associated with higher in-hospital mortality, whereas the latter was not. A meticulous analysis of 17 073 AMI patients (16) found a similar prevalence of LBBB and RBBB but the absolute numbers were almost 20 times higher. Newly developed LBBB was associated with higher 30-day mortality, whereas independent association was found for both “presenting” and newly developed RBBB (conditional on AMI localization) (16). Such a detailed analysis of BBB impact (or any other factor besides SUA) on AMI outcomes was beyond the scope of the present study. Hence, our results do not “eliminate” LBBB as irrelevant in general. At the same time, lack of an independent effect of LBBB does not compromise the conclusion about the independent effect of SUA. The same principle applies to the analysis of the secondary outcome, which confirmed observations from the Japanese study (13) about higher SUA as an independent predictor of higher long-term all-cause mortality after AMI. It should be noted, however, that SUA varies over time and is susceptible to various influences. Hence, it should be preferably treated as a time-varying covariate (which is almost never the case), and “predictivity” based on a single-point measurement might not be too informative. In the present cohort, the “effect” of SUA was independent of but conditional on age, ie, was apparent in “younger” patients but not in the “older” ones. We argue that this is due to inherently much higher hazard rates in the latter subgroup. Looking at the entire cohort, however, the “effect” of SUA was but small: the reported HR by 10 units increase corresponded to an HR of around 1.65 by 50 units increase and this is comparable to an HR by 5 years increase in age (around 1.60) or to that for “symptomatic heart failure at discharge” (around 1.77). Heart failure is a known prognostic factor of poor long-term outcomes after AMI with a “dose-dependent” effect (more severe the condition [eg, higher the Killip’s class], poorer the survival) (13) but we could not “grade” it. However, the effect of a more severe failure might have been aliased by “use of digitalis at discharge;” digitalis is typically used in more se-

vere patients, but per se has no impact on long-term survival (17), and 36/46 of the present “30-day survivors” who were prescribed with digitalis at discharge were diagnosed with symptomatic heart failure at the same time. Finally, from the today’s perspective (15), the use of beta-blockers in long-term treatment of “30-day survivors” in the present cohort was seemingly lower than “optimal” (25.9% were prescribed with beta-blockers at discharge). We have no explanation for this observation, which apparently reflects the practice from 10-13 years ago. Underuse of beta-blockers may affect long-term survival (12), but we find it unlikely that this fact biased the observations related to SUA – present observations are fully in line with those from a more recent Japanese cohort (13).

To conclude, higher SUA determined on admission (within 48 hours since the symptom onset) in a cohort of patients from Croatia was independently associated with higher short-term mortality and poorer long-term survival after AMI. The findings are in agreement with the observations in Japanese patients (13) and document relevance of on-admission SUA for risk stratification in AMI patients.

Acknowledgment

This study received no funding and authors have no conflict of interest to declare.

References

- 1 Coleman LA, Roubenoff R. Gout. In: Caballero B, Allen L, Prentice A, editors. *Encyclopedia of human nutrition*, 2nd edition. Oxford (UK): Elsevier; 2005; p. 419-23.
- 2 Vitart V, Rudan I, Hayward C, Gray NK, Floyd J, Palmer CN, et al. SLC2A9 is a newly identified urate transporter influencing serum urate concentration, urate excretion and gout. *Nat Genet.* 2008;40:437-42. [Medline:18327257](#) [doi:10.1038/ng.106](#)
- 3 Feig DI, Kang DH, Johnson RJ. Uric acid and cardiovascular risk. *N Engl J Med.* 2008;359:1811-21. [Medline:18946066](#) [doi:10.1056/NEJMra0800885](#)
- 4 Tomita M, Mizuno S, Yokota K. Increased levels of serum uric acid among ex-smokers. *J Epidemiol.* 2008;18:132-4. [Medline:18469491](#) [doi:10.2188/jea.JE2006332](#)
- 5 Johnson RJ, Kang DH, Feig D, Kivlighn S, Kanellis J, Watanabe S, et al. Is there a pathogenetic role for uric acid in hypertension and cardiovascular and renal disease? *Hypertension.* 2003;41:1183-90. [Medline:12707287](#) [doi:10.1161/01.HYP.0000069700.62727.C5](#)
- 6 Gagliardi AC, Miname MH, Santos RD. Uric acid: A marker of increased cardiovascular risk. *Atherosclerosis.* 2009;202:11-7. [Medline:18585721](#) [doi:10.1016/j.atherosclerosis.2008.05.022](#)

- 7 Milionis HJ, Kalantzi KJ, Goudevenos JA, Seferiadi K, Mikhailidis DP, Elisaf MS. Serum uric acid levels and risk for acute ischaemic non-embolic stroke in elderly subjects. *J Intern Med.* 2005;258:435-41. [Medline:16238679](#) [doi:10.1111/j.1365-2796.2005.01565.x](#)
- 8 Weir CJ, Muir SW, Walters MR, Lees KR. Serum urate as an independent predictor of poor outcome and future vascular events after acute stroke. *Stroke.* 2003;34:1951-6. [Medline:12843346](#) [doi:10.1161/01.STR.0000081983.34771.D2](#)
- 9 Karagiannis A, Mikhailidis DP, Tziomalos K, Sileli M, Savvatanos S, Kakafika A, et al. Serum uric acid as an independent predictor of early death after acute stroke. *Circ J.* 2007;71:1120-7. [Medline:17587721](#) [doi:10.1253/circj.71.1120](#)
- 10 Allison TG. Coronary heart disease epidemiology. In: Murphy JG, Lloyd MA, editors. *Mayo clinic cardiology*. 3rd edition. Rochester (MN): Mayo Clinic Scientific Press; 2007. p. 687-93.
- 11 Brodov Y, Chouraqui P, Goldenberg I, Boyko V, Mandelzweig L, Behar S. Serum uric acid for risk stratification of patients with coronary artery disease. *Cardiology.* 2009;114:300-5. [Medline:19776568](#) [doi:10.1159/000239860](#)
- 12 Dunkelgrun M, Welten GM, Goei D, Winkel TA, Schouten O, van Domburg RT, et al. Association between serum uric acid and perioperative and late cardiovascular outcome in patients with suspected or definite coronary artery disease undergoing elective vascular surgery. *Am J Cardiol.* 2008;102:797-801. [Medline:18805100](#) [doi:10.1016/j.amjcard.2008.05.019](#)
- 13 Kojima S, Sakamoto T, Ishihara M, Kimura K, Miyazaki S, Yamagishi M, et al. Prognostic usefulness of serum uric acid after acute myocardial infarction (the Japanese Acute Coronary Syndrome Study). *Am J Cardiol.* 2005;96:489-95. [Medline:16098298](#) [doi:10.1016/j.amjcard.2005.04.007](#)
- 14 Zou G. A modified poisson regression approach to prospective studies with binary data. *Am J Epidemiol.* 2004;159:702-6. [Medline:15033648](#) [doi:10.1093/aje/kwh090](#)
- 15 White HD, Chew DP. Acute myocardial infarction. *Lancet.* 2008;372:570-84. [Medline:18707987](#) [doi:10.1016/S0140-6736\(08\)61237-4](#)
- 16 Wong CK, Stewart RA, Gao W, French JK, Raffel C, White HD. Prognostic differences between different types of bundle branch block during the early phase of acute myocardial infarction: insights from the Hirulog and Early Reperfusion or Occlusion (HERO)-2 trial. *Eur Heart J.* 2006;27:21-8. [Medline:16269419](#) [doi:10.1093/eurheartj/ehi622](#)
- 17 Task Force for Diagnosis and Treatment of Acute and Chronic Heart Failure 2008 of European Society of Cardiology, Dickstein K, Cohen-Solal A, Filippatos G, McMurray JJ, Ponikowski P, et al. ESC Guidelines for the diagnosis and treatment of acute and chronic heart failure 2008: the Task Force for the Diagnosis and Treatment of Acute and Chronic Heart Failure 2008 of the European Society of Cardiology. Developed in collaboration with the Heart Failure Association of the ESC (HFA) and endorsed by the European Society of Intensive Care Medicine (ESICM). *Eur Heart J.* 2008;29:2388-442. [Medline:18799522](#) [doi:10.1093/eurheartj/ehn309](#)